



FEATURES

- 219-1,706 +/- RSF Suites
- Built in 1985
- Renovated in 2020
- Elevator Served
- Ample On-Site Parking
- Full-Service Gross
- Professionally Managed & Maintained

1425 West Foothill Blvd., Upland, CA 91786

Discover the perfect space for your business in this well-maintained, three-story, elevator-served professional office building, featuring on-site property management for your convenience. Ideally located on the vibrant north side of West Foothill Blvd., nestled between Mountain Ave. and Benson Ave., the property offers seamless access to both the I-10 & 210 Freeways, making your commute a breeze.

Enjoy the luxury of ample parking and the ease of full-service leases, which cover both electrical and janitorial services. Whether you're a growing business or an established company, this is the ideal setting to elevate your professional presence.

PRESENTED BY

Michael G. Rademaker
Founder / CEO | 909.579.1340
DRE Lic #00556679
mrademaker@mgrservices.com

Helen G. Zhang
909.272.3357 | 909.581.6626
DRE Lic #01890497
hzhang@mgrrealestate.com



COMMERCIAL | RESIDENTIAL | PROPERTY MANAGEMENT

ONTARIO COSTA MESA VICTORVILLE RANCHO MIRAGE CARLSBAD IRVINE

(800) 777-7647 mgrrealestate.com DRE #01841921





1425 West Foothill Blvd, Upland | Offices for Lease

1425 West Foothill Blvd, Upland, CA 91786

Floor / Suite #	R.S.F.	Description	Status
2 nd / 213	250	One Private Office with Windows	Available 11/01/2026
3 rd / 301	575	Fully Furnished Large Private Office	Available Now
3 rd / 305	1,706	Reception Area, Bullpen, and 3 Private Offices	Available Now
3 rd / 310	889	Reception Area, Bullpen, Kitchen with Sink, Storage and Private Balcony	Available Now
3 rd / 315	219	One Private Office	Available Now
3 rd / 320	261	One Private Office	Available Now
3 rd / 360	1,145	Reception Area, Bullpen, 2 Private Offices and a Large Conference Room with Windows	Available Now



For more information, contact:

Michael G. Rademaker
 Founder / CEO | Lic. #00556679
 Office Direct: 909-579-1340

Helen G. Zhang
 Commercial Associate | Lic. #01890497
 Office Direct: 909-581-6626 | Cell: 909.272.3357

*All items on this page are deemed to be correct but should be viewed as reference only. MGR Real Estate, Inc. does not warranty/guaranty the validity of any information on this page
 MGR Real Estate Inc. 3800 Concourse St., Suite 100, Ontario, California 91764 | Office: 909-981-4466 / Fax: 909-981-6267

COMMERCIAL | RESIDENTIAL | PROPERTY MANAGEMENT
 ONTARIO COSTA MESA VICTORVILLE RANCHO MIRAGE CARLSBAD IRVINE
 (800) 777-7647 mgrrealestate.com DRE #01841921



1425 W. Foothill Blvd, Upland, CA 91786 – 2nd Floor
Suite 213: 250 RSF (Available 11/01/2026)



Suite #213
(250 RSF)

For more information, contact:

Michael G. Rademaker
Founder / CEO | Lic. #00556679
Office Direct: 909-579-1340

Helen G. Zhang
Commercial Associate | Lic. #01890497
Office Direct: 909-581-6626 | Cell: 909.272.3357

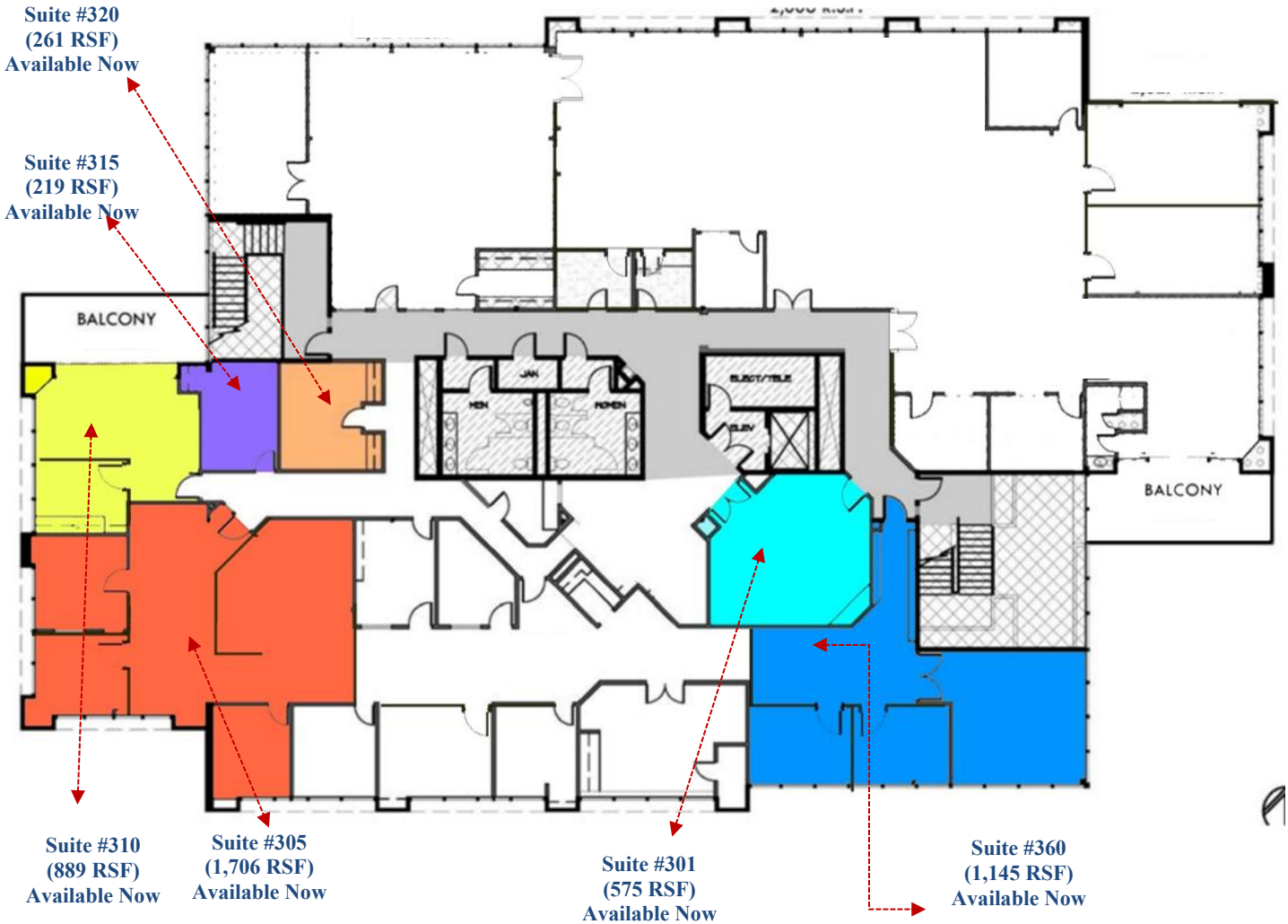
*All items on this page are deemed to be correct but should be viewed as reference only. MGR Real Estate, Inc. does not warranty/guaranty the validity of any information on this page
[MGR Real Estate Inc. 3800 Concourse St., Suite 100, Ontario, California 91764 | Office: 909-981-4466 / Fax: 909-981-6267](#)



1425 W. Foothill Blvd, Upland, CA 91786 – 3rd Floor

Suite 301: 575 RSF | Suite 305: 1,706 RSF | Suite 310: 889 RSF

Suite 315: 219 RSF | Suite 320: 261 RSF | Suite 360: 1,145 RSF



For more information, contact:

Michael G. Rademaker
 Founder / CEO | Lic. #00556679
 Office Direct: 909-579-1340

Helen G. Zhang
 Commercial Associate | Lic. #01890497
 Office Direct: 909-581-6626 | Cell: 909.272.3357

*All items on this page are deemed to be correct but should be viewed as reference only. MGR Real Estate, Inc. does not warranty/guaranty the validity of any information on this page
 MGR Real Estate Inc. 3800 Concourse St., Suite 100, Ontario, California 91764 | Office: 909-981-4466 / Fax: 909-981-6267

COMMERCIAL | RESIDENTIAL | PROPERTY MANAGEMENT
 ONTARIO COSTA MESA VICTORVILLE RANCHO MIRAGE CARLSBAD IRVINE
 (800) 777-7647 mgrrealestate.com DRE #01841921