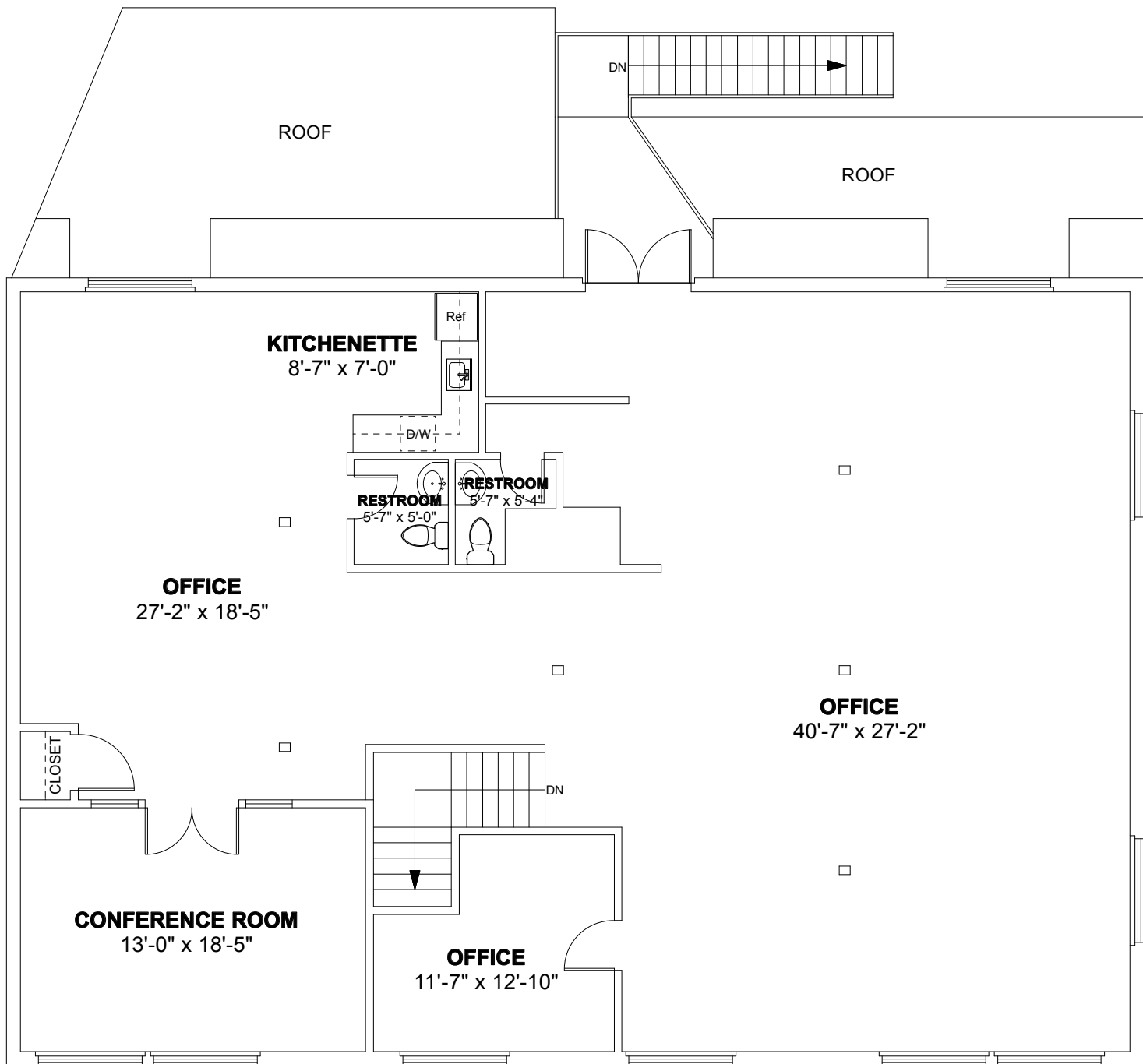


**FIRST FLOOR PLAN**  
Ceiling Height = 9'-2"

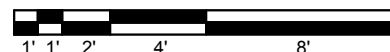


Scale 1/8" = 1'-0"

<b>EXISTING CONDITIONS FLOOR PLANS</b>			<b>1</b>
JOB NO.	DATE: FEBRUARY 2018	SCALE: 1/8" = 1'-0"	
<b>NATIONAL FLOOR PLANS</b> 398 COLUMBUS AVENUE SUITE 100 BOSTON MA 02116 800.328.0217 TEL		<b>270 PARSONS STREET</b> BRIGHTON, MA	

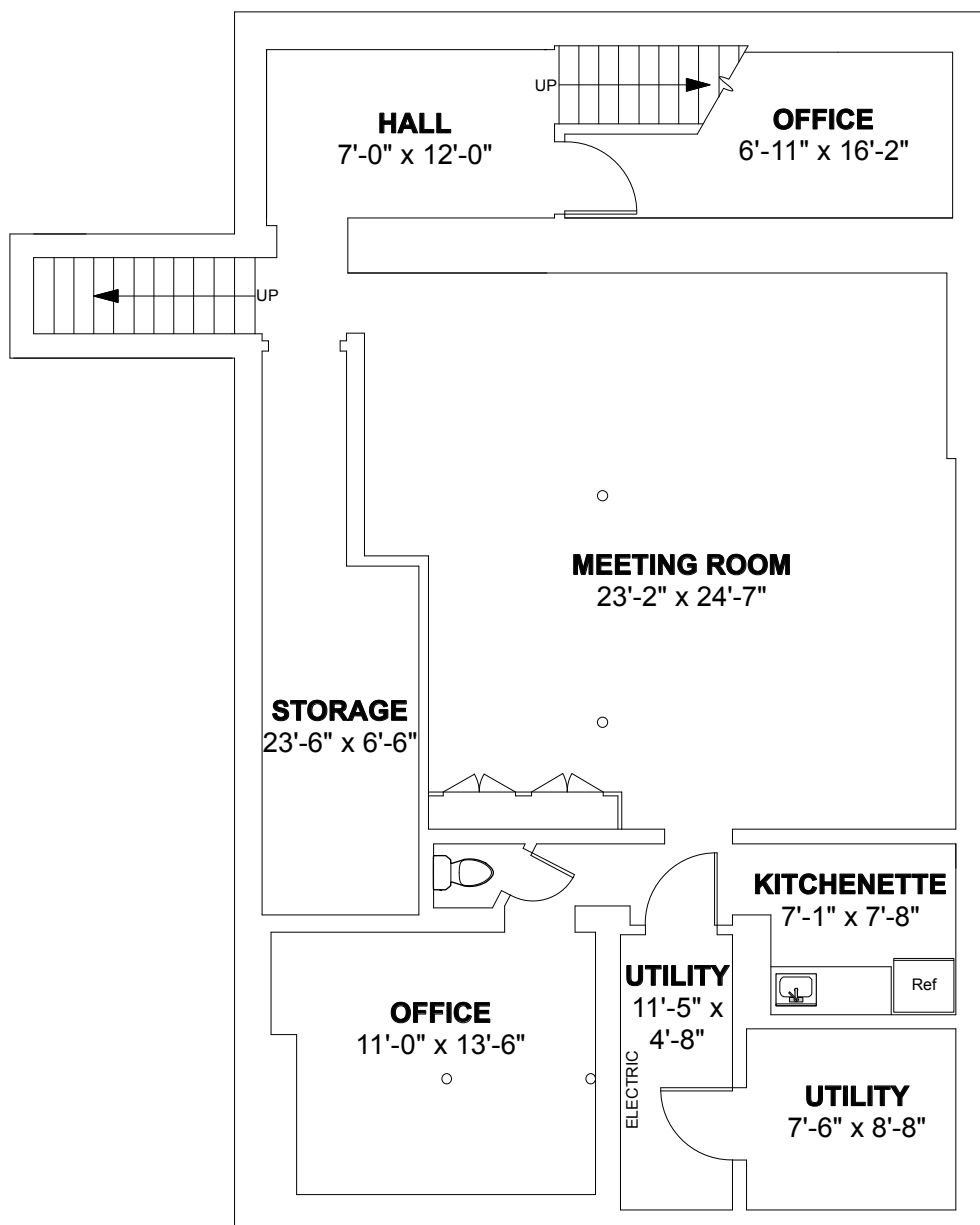


**SECOND FLOOR PLAN**  
Ceiling Height = 9'-8"

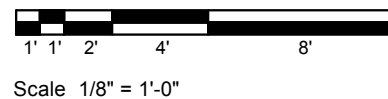


Scale 1/8" = 1'-0"

EXISTING CONDITIONS FLOOR PLANS			2
JOB NO.	DATE: FEBRUARY 2018	SCALE: 1/8" = 1'-0"	
<b>NATIONAL FLOOR PLANS</b> 398 COLUMBUS AVENUE SUITE 100 BOSTON MA 02116 800.328.0217 TEL		<b>270 PARSONS STREET</b> BRIGHTON, MA	



**LOWER LEVEL PLAN**  
Ceiling Height = 7'-6"



<b>EXISTING CONDITIONS FLOOR PLANS</b>			<b>3</b>
JOB NO.	DATE: FEBRUARY 2018	SCALE: 1/8" = 1'-0"	
<b>NATIONAL FLOOR PLANS</b> 398 COLUMBUS AVENUE SUITE 100 BOSTON MA 02116 800.328.0217 TEL		<b>270 PARSONS STREET</b> BRIGHTON, MA	