

4343 WYOMING AVENUE
DEARBORN, MICHIGAN

INDUSTRIAL FOR SALE OR LEASE
290,894 Square Feet



**SIGNATURE
ASSOCIATES**
KNOW SIGNATURE | KNOW RESULTS

MAKSTEEL



PROPERTY FEATURES

- 290,894 square feet available
- 5,000 square feet office
- 28' – 34' clear height
- (6) 16' x 16' grade level doors
- (1) truckwells
- 20-40-ton crane
- Great crane building with 90' bays
- Immediate access to I-94
- Lease Rate: \$4.95/sq. ft. NNN
- Sale Price: Contact Broker



For more information, please contact:

JOE HAMWAY
(248) 948 0113
jhamway@signatureassociates.com

GREG HUDAS
(248) 799 3162
ghudas@signatureassociates.com

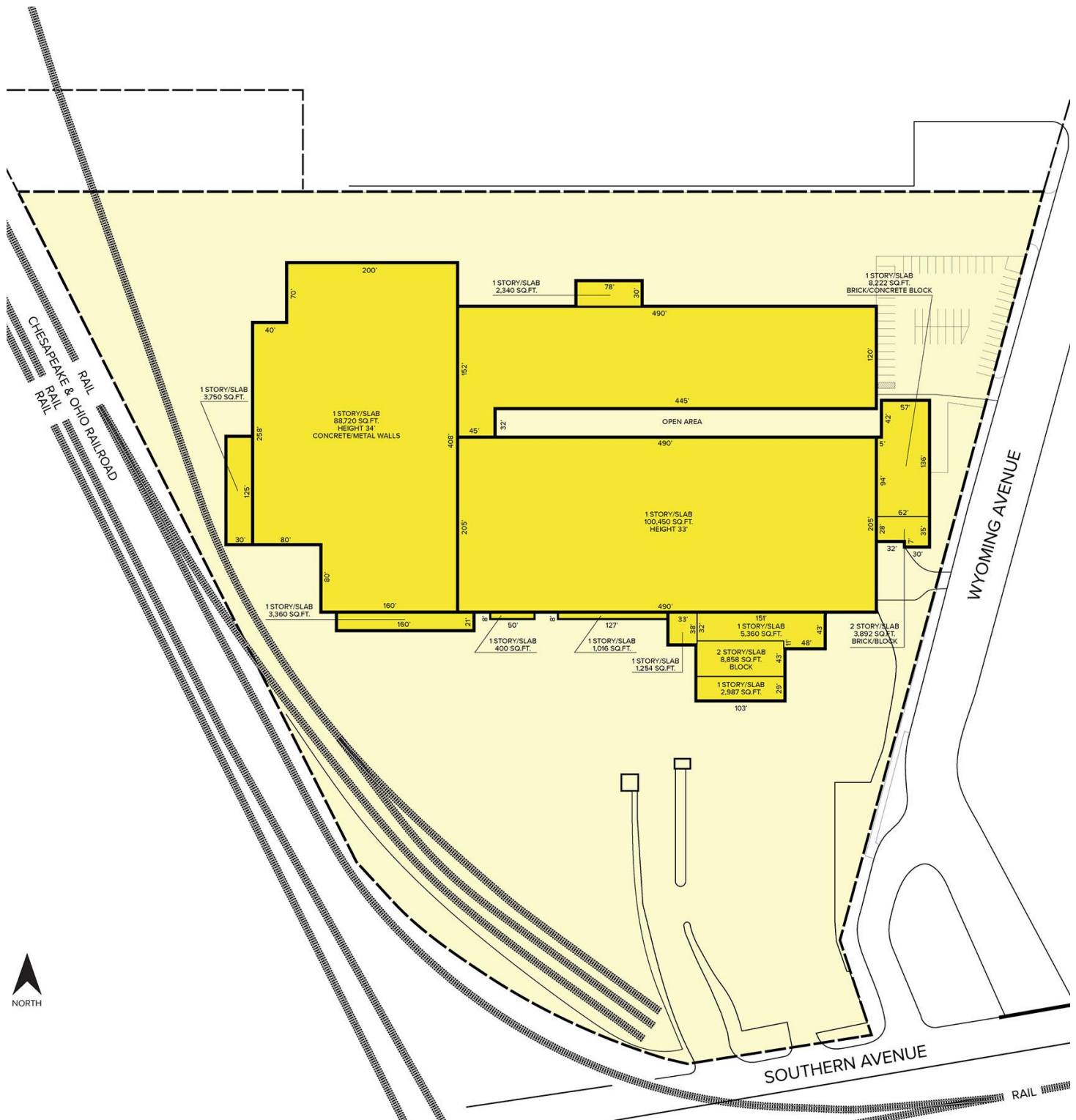
SIGNATURE ASSOCIATES
One Towne Square, Suite 1200
Southfield, MI 48076
www.signatureassociates.com

4343 Wyoming Avenue – Dearborn, Michigan

Industrial For Sale or Lease

290,894
Square Feet
AVAILABLE

Site Plan



For more information, please contact:

JOE HAMWAY
(248) 948 0113
jhamway@signatureassociates.com

GREG HUDAS
(248) 799 3162
ghudas@signatureassociates.com

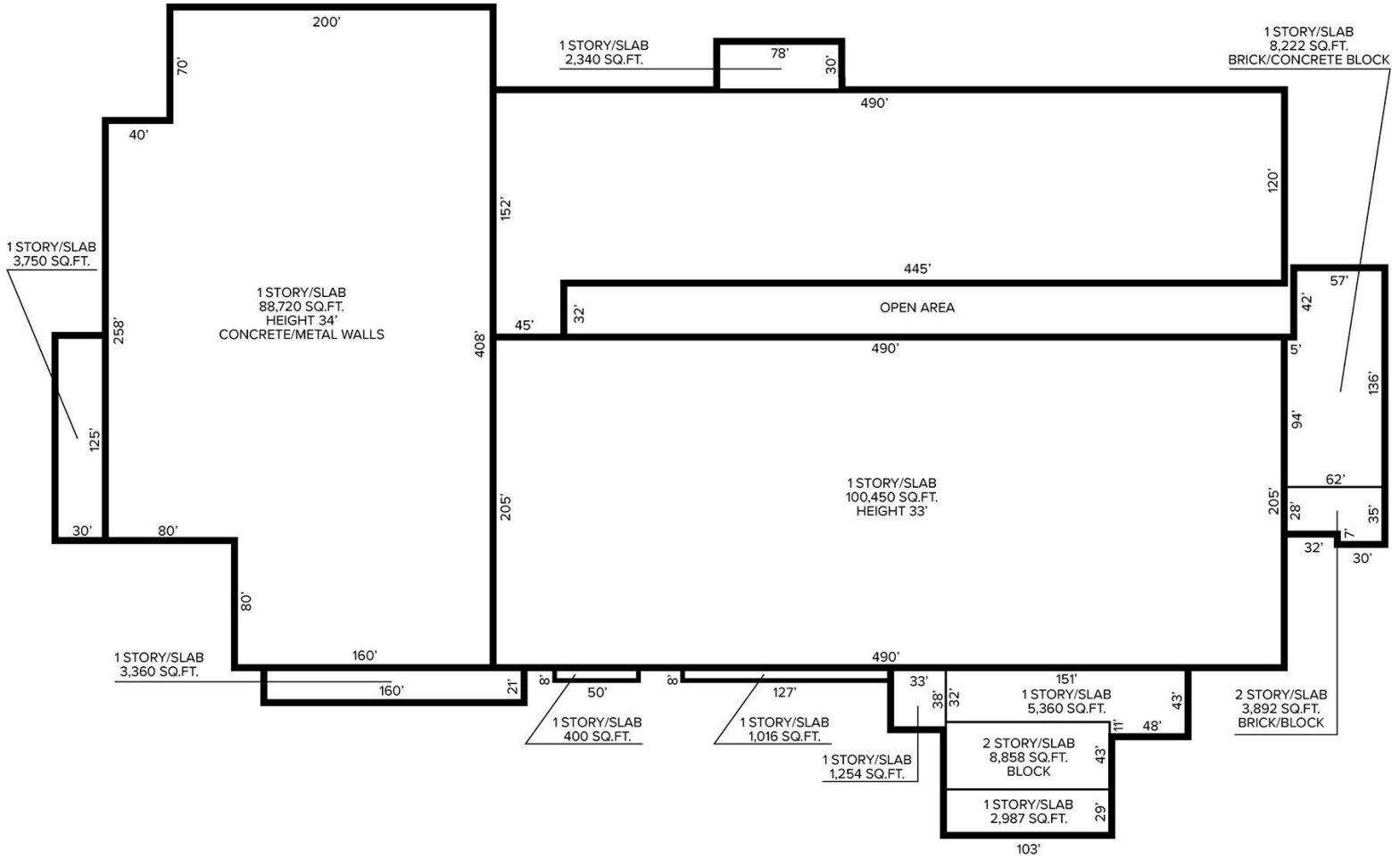
SIGNATURE ASSOCIATES
One Towne Square, Suite 1200
Southfield, MI 48076
www.signatureassociates.com

4343 Wyoming Avenue – Dearborn, Michigan

Industrial For Sale or Lease

290,894
Square Feet
AVAILABLE

Floor Plan



For more information, please contact:

JOE HAMWAY
(248) 948 0113
jhamway@signatureassociates.com

GREG HUDAS
(248) 799 3162
ghudas@signatureassociates.com

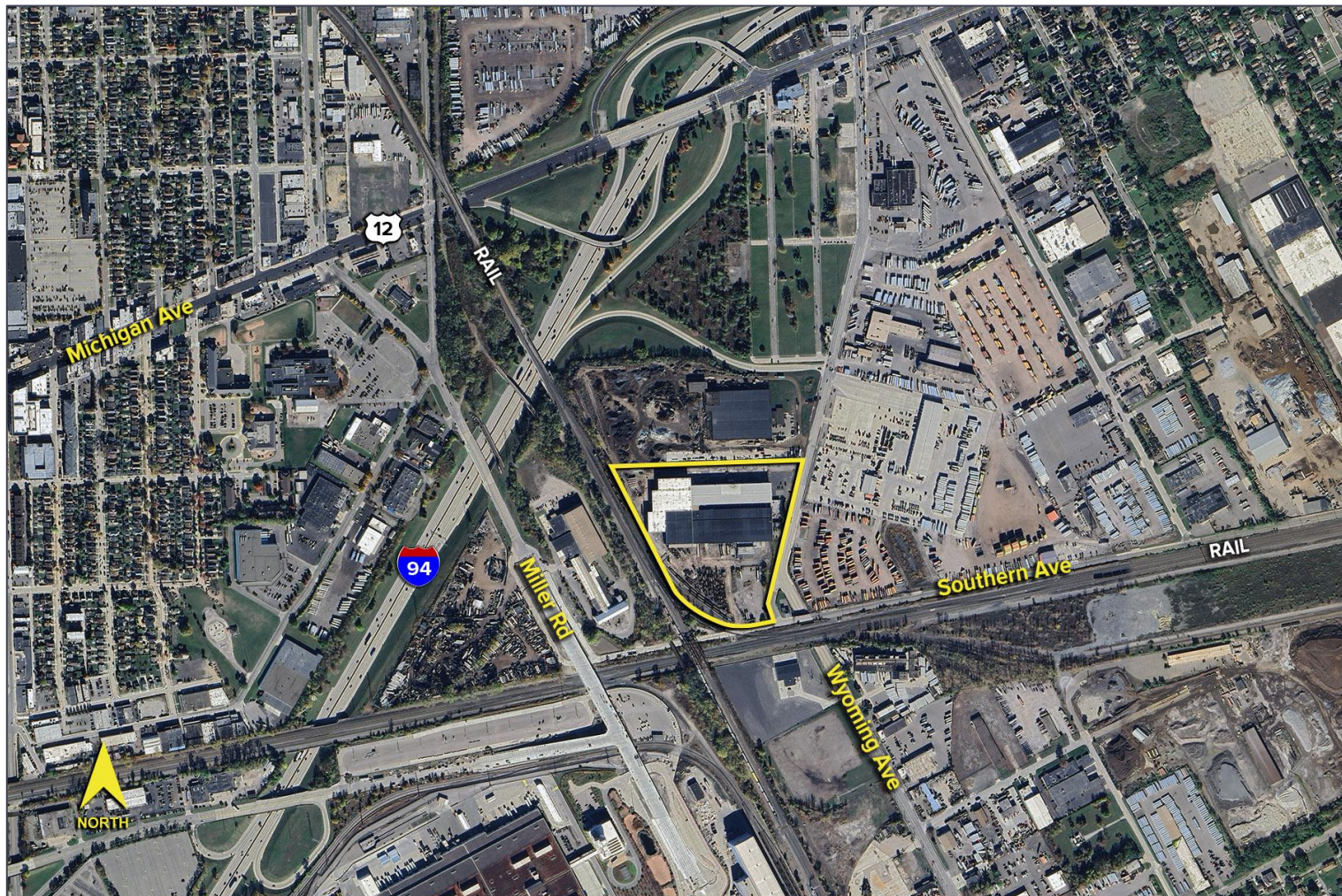
SIGNATURE ASSOCIATES
One Towne Square, Suite 1200
Southfield, MI 48076
www.signatureassociates.com

4343 Wyoming Avenue – Dearborn, Michigan

Industrial For Sale or Lease

290,894
Square Feet
AVAILABLE

Aerial



For more information, please contact:

JOE HAMWAY
(248) 948 0113
jhamway@signatureassociates.com

GREG HUDAS
(248) 799 3162
ghudas@signatureassociates.com

SIGNATURE ASSOCIATES
One Towne Square, Suite 1200
Southfield, MI 48076
www.signatureassociates.com