



# FOR LEASE

## EAST BANK LOFTS

537 SE ASH STREET  
PORTLAND, OR 97214

SUITE 205 +/-2,926 RSF  
SUITE 302-304 +/-4,348 RSF  
SUITE 400 +/-10,331 RSF  
PLEASE CALL FOR RATES

JOSH BEAN, SIOR  
[josh@ecacre.com](mailto:josh@ecacre.com)

BRIAN HANSON, MREF  
[brian@ecacre.com](mailto:brian@ecacre.com)

503.205.0610



ETHOS COMMERCIAL ADVISORS LLC | 1111 NE FLANDERS ST, SUITE 201 | PORTLAND, OR 97232

These marketing materials do not constitute an offer to sell or lease, and do not constitute or contain promises, representations or warranties of any kind. The information in these marketing materials may contain approximations and images for illustration purposes. The owner, broker and their agents assume no risk or liability for inaccuracies, errors or omissions in these marketing materials. The terms and conditions of any transaction with respect to the property shall be contained exclusively in a written purchase and sale agreement or lease between the owner and the purchaser or tenant. Prospective purchasers or tenants should perform their own inspections of the property to verify its condition, permitted uses, and all other characteristics. | ©2026 Ethos Commercial Advisors LLC. All Rights Reserved. | 5.23.26

LICENSED IN OREGON, WASHINGTON, AND TEXAS

The East Bank Lofts offers light-filled creative office space in a converted 1912 industrial building. Exposed brick and heavy timber beams provide an authentic and appealing aesthetic.

## LOCATION

Be a part of the exploding Central Eastside Industrial District, in close proximity to bars, restaurants, and creative peers. Walking distance to downtown, the Burnside Bridgehead, the Goat Blocks, and much more.

## HIGHLIGHTS

- Historic building with some seismic upgrades
- Common area conference room
- Tenant bike parking
- On-site storage available
- Operable windows
- Abundant natural light
- Kitchenettes in select suites
- On-site coffee shop and restaurant
- Abundant neighborhood amenities
- Secured parking available (call for pricing)
- Wired with fiber optic cable

Historic building  
with some  
seismic upgrades

Common area  
conference room

Tenant bike parking

On-site storage  
available

Secured parking  
available



Walk Score  
**91**



Transit Score  
**77**

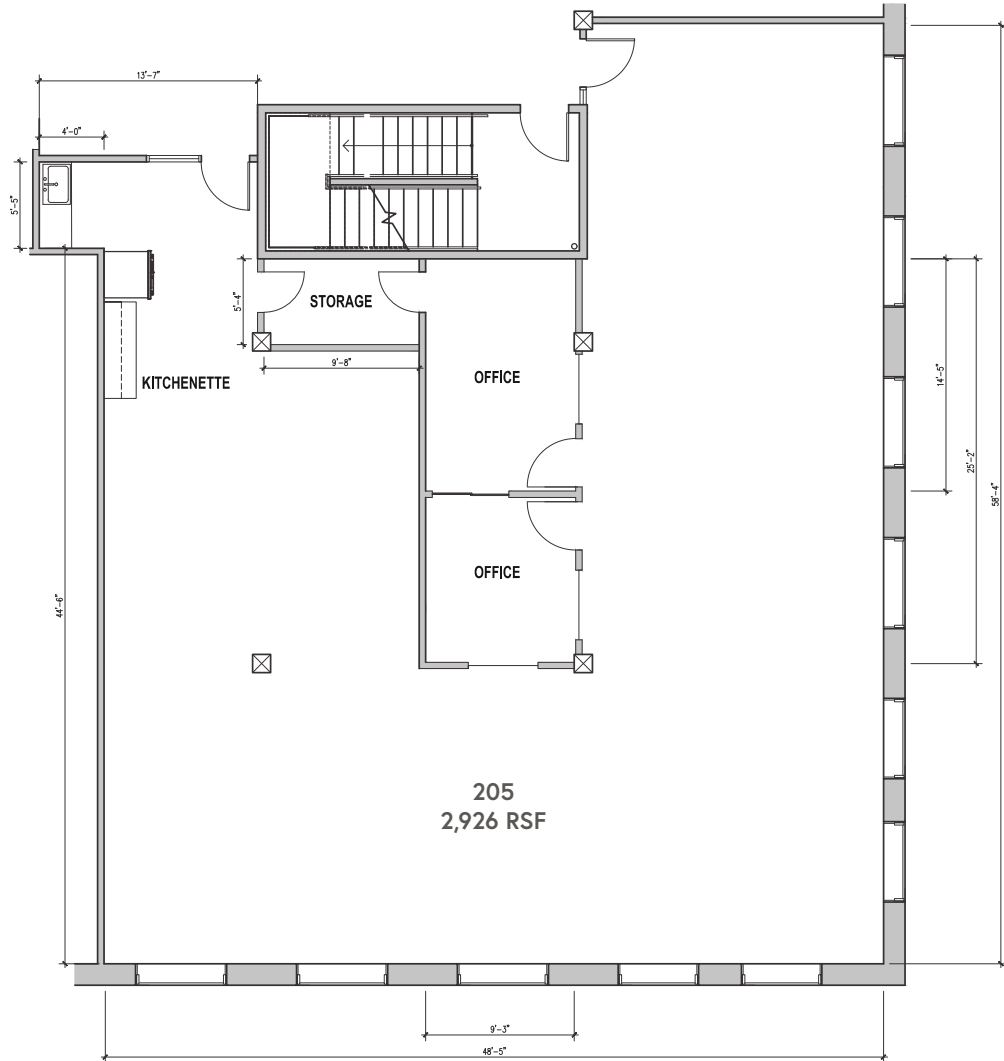


Bike Score  
**97**



# SUITE 205 | +/-2,926 RSF

- Corner suite with abundant light and views
- Two private offices
- Storage room
- Kitchenette



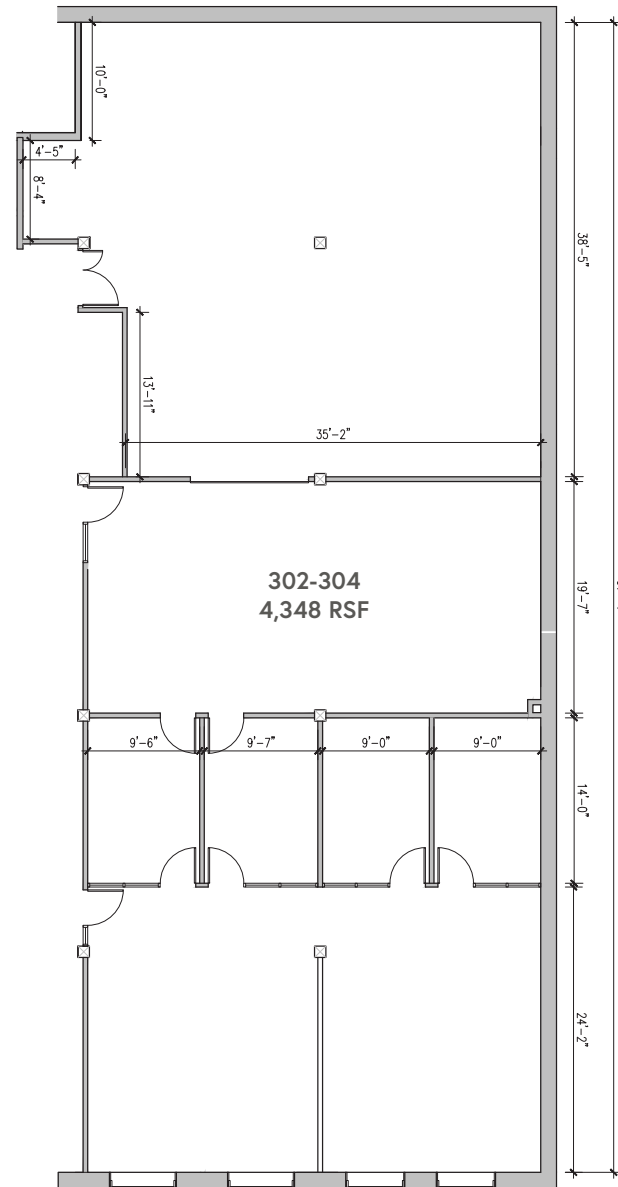
THIS DRAWING IS NOT TO SCALE AND IS FOR ILLUSTRATIVE PURPOSES ONLY

# SUITE 302-304 | +/-4,348 RSF

- 4 private offices
- Open creative layout
- Tenant improvement allowance available



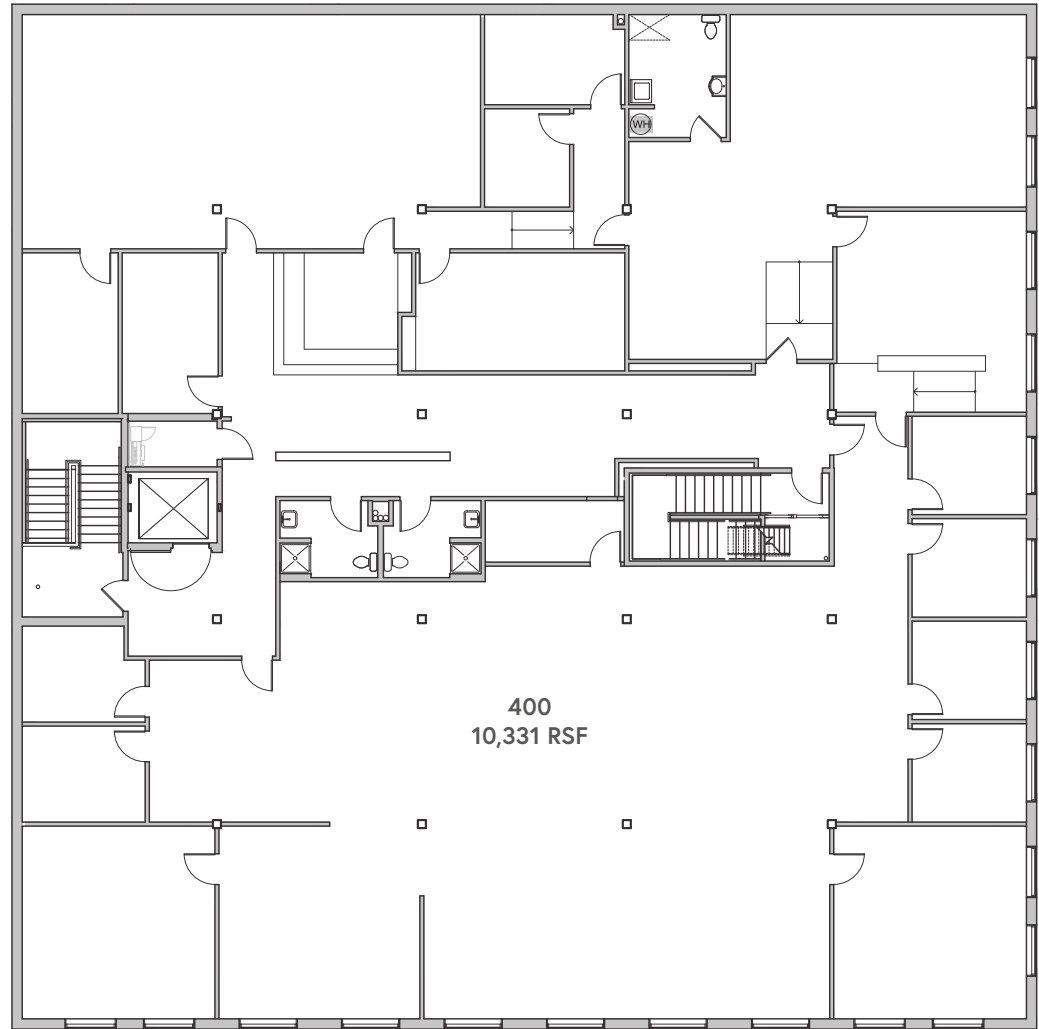
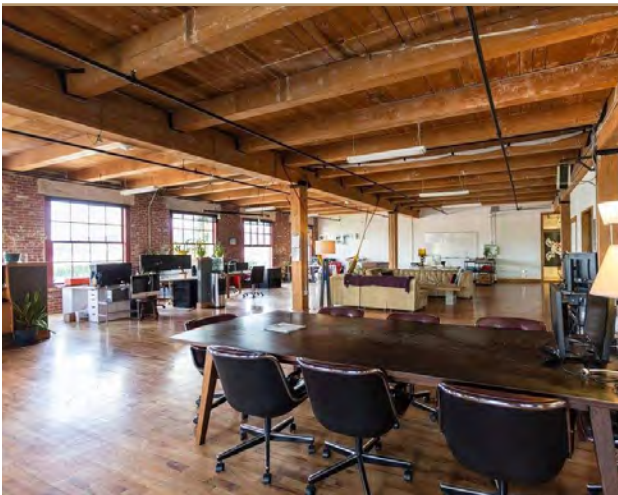
SUITE PHOTOS  
COMING SOON



THIS DRAWING IS NOT TO SCALE AND IS FOR ILLUSTRATIVE PURPOSES ONLY

# SUITE 400 | +/-10,331 RSF

- Top floor with views
- Direct / secure elevator access
- Mix of offices and open plan
- Private restrooms



THIS DRAWING IS NOT TO SCALE AND IS FOR ILLUSTRATIVE PURPOSES ONLY





OREGON CONVENTION CENTER

MODA CENTER

PARKING

LLOYD CENTER



RANGER

EASTSIDE EXCHANGE

KITCHEN KUU



DOWNTOWN PORTLAND

PARKING

BURNSIDE BRIDGE



C'EST SI BON

DIMOS APIZZA

BOSSANOVA BALLROOM

WURST



NORMANDIE



SIZZLE PIE  
KINBOSHI  
DIRTY PRETTY  
B.B.B.

EAST BANK LOFTS  
ON-SITE AMENITIES

Presley Poe's  
GOLD STUDIOS

EXQUISITE CREATURES  
Coffee Shop

bare  
BEAUTY



J & M Cafe

WAYFINDER Beer

kann

SCOTCH LODGE  
The Paper Bridge