

Drawing Disclaimer Notes

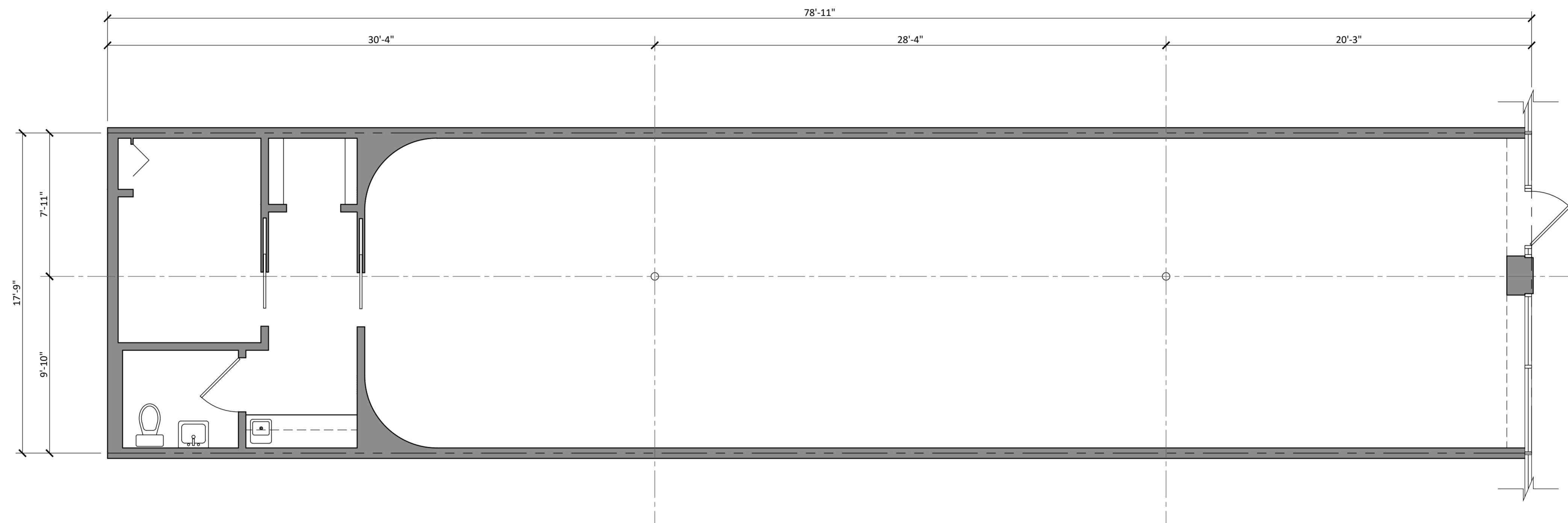
DRAWINGS HAVE BEEN PREPARED BY UTILIZING LOD-100 STANDARDS. THIS LEVEL OF DEVELOPMENT (LOD) IS STRICTLY LIMITED TO THE PRE-DESIGN STAGE. THE DRAWING CONSISTS OF TWO-DIMENSIONAL ELEMENTS AND SYMBOLS TO SIGNIFY THE GENERAL LAYOUT OF THE EXISTING SPACE AND GENERAL MASSES TO SIGNIFY AN ELEMENT'S EXISTENCE.

THIS DRAWING IS NOT INTENDED FOR CONSTRUCTION. TENANT SHALL VERIFY ALL EXISTING CONDITIONS AND MEASUREMENTS PRIOR TO CONSTRUCTION. CURRENT DIMENSIONAL ACCURACY ADHERES TO LOD-100 STANDARDS (+/- 4").

SQUARE FOOTAGE AREA LINE SHOWN IS TO FRONT FACE OF STOREFRONT AND ASSUMED EXTERIOR FACE BACK WALL AS WELL AS TO CENTERLINES OF DEMISING WALLS (ASSUMED AND DRAWN AT 7" TOTAL THICKNESS).

ALL DIMENSIONS ARE TO FACE OF FINISHED CONSTRUCTION OR STRUCTURAL COLUMN CENTER LINES, U.N.O.

DRAWING SCALE AND GRAPHIC SCALE ACCURATE WHEN PRINTED ON 24x36 MEDIA.



FLOOR PLAN - EXISTING
Scale: 1/4" = 1'-0"
0 1' 2' 4' 8'

TOTAL SQUARE FOOTAGE: 1,400