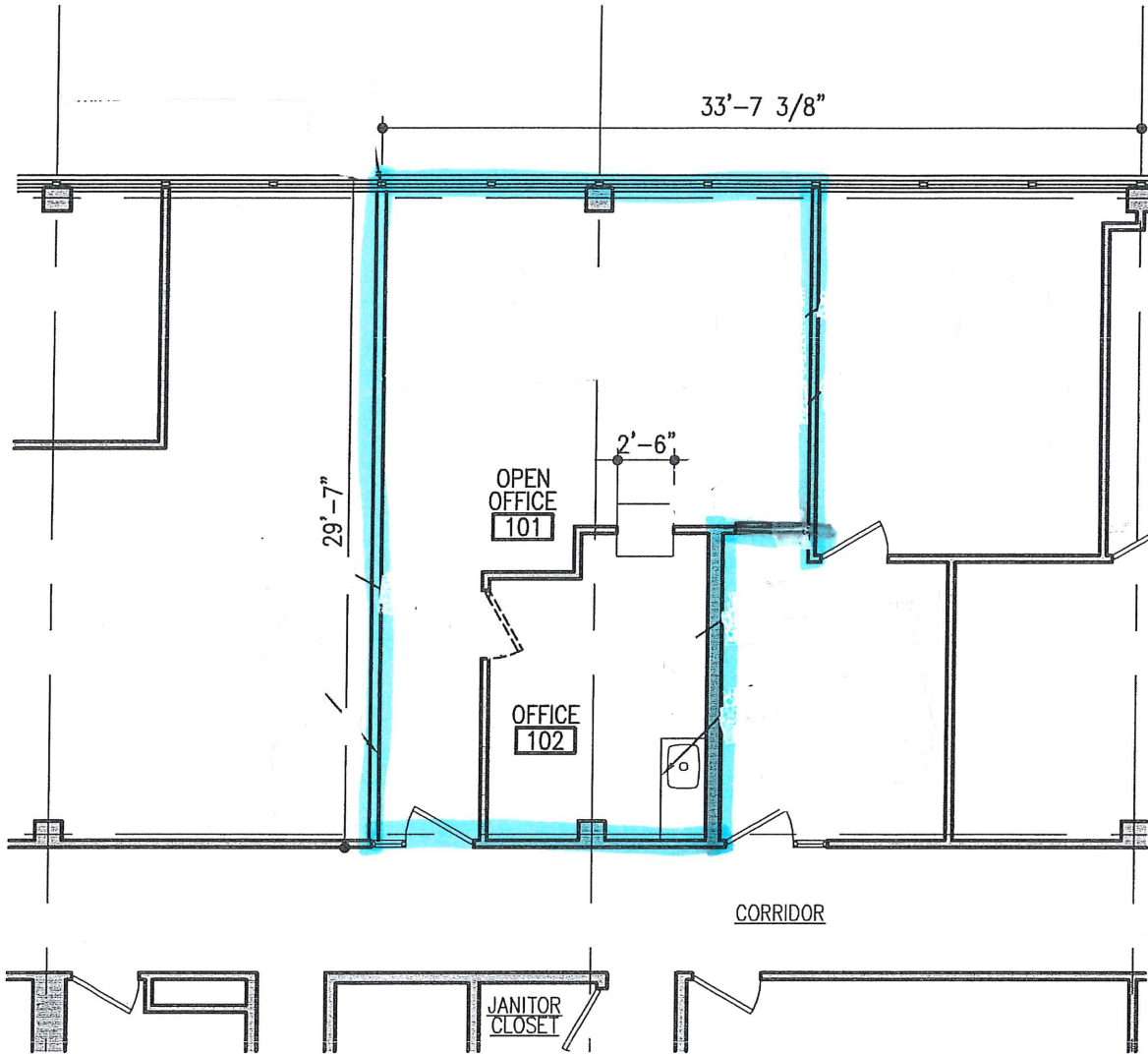


2200 West Port Plaza Drive
Saint Louis, MO 63146

Suite 319 - 600 SF



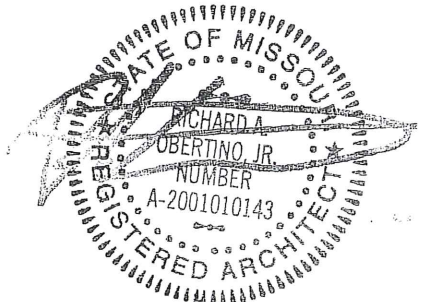
FLOOR PLAN

SCALE: 1/8" = 1'-0"



CODE ANALYSIS & GENERAL NOTES

- A. EXISTING BUILDING IS NON-SPRINKLERED.
- B. CURRENT BUILDING CODE: 2009 INTERNATIONAL BUILDING CODE
- C. OVERALL NEW TENANT SPACE AREA IS 868 S.F.
 - TABLE 1004.1.1 - Business = 868 S.F. / 100 Gross S.F. = 9 OCCUPANTS
 - SECTION 1005.1 - 9 OCCUPANTS X 0.20 PER OCCUPANT = 1.8" MIN / 1 EXITS
 - TABLE 1021.2 - (1) Exit Required - 49 occupants and 75 feet travel distance



SEP 10 2014