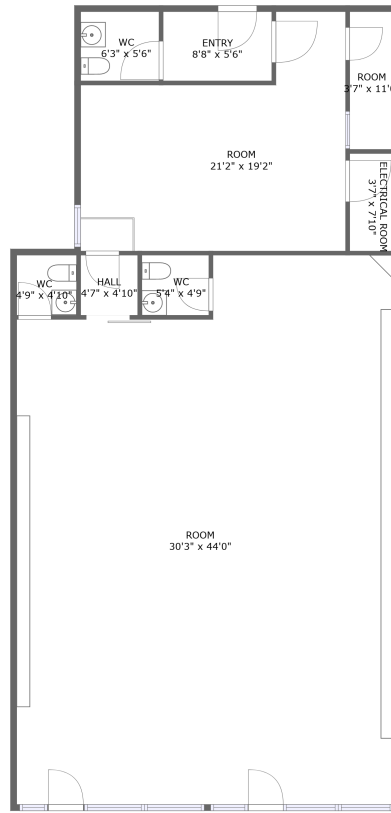



# 2519 Gresham Road Southeast, Atlanta, Georgia 30316, United States, primary




FLOOR 1

## Property summary

 **0** Garages

 **0** Bedrooms

 **0** Bathrooms

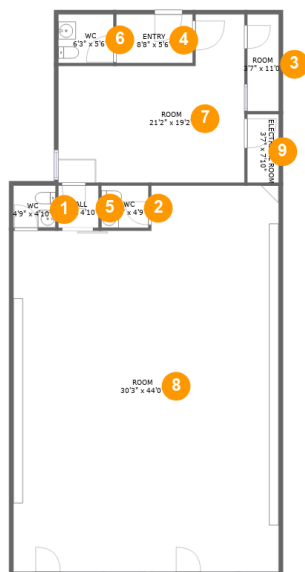
 **3** Half baths

 **1** Floors

 **1,880**  
Gross living  
area sqft

 **1,912**  
Total sqft

# 2519 Gresham Road Southeast, Atlanta, Georgia 30316, United States, primary



## Room dimensions

Floor 1

Total sqft: 1912 Living area: 1880

#		Dimensions	sqft	Counted as living area
1	WC	4'9" x 4'10"	23 sq. ft	Yes
2	WC	5'4" x 4'9"	26 sq. ft	Yes
3	Room	3'7" x 11'0"	39 sq. ft	Yes
4	Entry	8'8" x 5'6"	48 sq. ft	Yes
5	Hall	4'7" x 4'10"	22 sq. ft	Yes
6	WC	6'3" x 5'6"	35 sq. ft	Yes
7	Room	21'2" x 19'2"	314 sq. ft	Yes
8	Room	30'3" x 44'0"	1247 sq. ft	Yes
9	Electrical Room	3'7" x 7'10"	28 sq. ft	No

**2519 Gresham Road Southeast, Atlanta, Georgia  
30316, United States, primary**

**1 Floor 1 - WC**

---

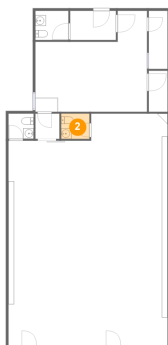


**Dimensions:** 4'9" x 4'10"  
**Area:** 23 sq. ft  
**Counted as living area:** Yes

**Heated:** Yes  
**Finished:** Yes  
**Enclosed:** Yes  
**Contiguous:** Yes  
**Permitted:** Yes  
**Wet space:** Yes  
**Addition:** No  
**Conversion:** No

**2 Floor 1 - WC**

---



**Dimensions:** 5'4" x 4'9"  
**Area:** 26 sq. ft  
**Counted as living area:** Yes

**Heated:** Yes  
**Finished:** Yes  
**Enclosed:** Yes  
**Contiguous:** Yes  
**Permitted:** Yes  
**Wet space:** Yes  
**Addition:** No  
**Conversion:** No

2519 Gresham Road Southeast, Atlanta, Georgia  
30316, United States, primary

### 3 Floor 1 - Room



Dimensions: 3'7" x 11'0"  
Area: 39 sq. ft  
Counted as living area: Yes

Heated: Yes  
Finished: Yes  
Enclosed: Yes  
Contiguous: Yes  
Permitted: Yes  
Wet space: No  
Addition: No  
Conversion: No

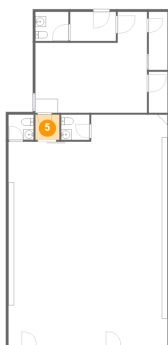
### 4 Floor 1 - Entry



Dimensions: 8'8" x 5'6"  
Area: 48 sq. ft  
Counted as living area: Yes

Heated: Yes  
Finished: Yes  
Enclosed: Yes  
Contiguous: Yes  
Permitted: Yes  
Wet space: No  
Addition: No  
Conversion: No

### 5 Floor 1 - Hall



Dimensions: 4'7" x 4'10"  
Area: 22 sq. ft  
Counted as living area: Yes

Heated: Yes  
Finished: Yes  
Enclosed: Yes  
Contiguous: Yes  
Permitted: Yes  
Wet space: No  
Addition: No  
Conversion: No

2519 Gresham Road Southeast, Atlanta, Georgia  
30316, United States, primary

**6** Floor 1 - WC



Dimensions: 6'3" x 5'6"  
Area: 35 sq. ft  
Counted as living area: Yes

Heated: Yes  
Finished: Yes  
Enclosed: Yes  
Contiguous: Yes  
Permitted: Yes  
Wet space: Yes  
Addition: No  
Conversion: No

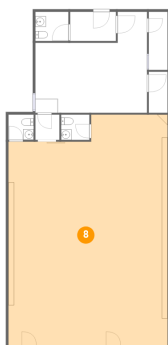
**7** Floor 1 - Room



Dimensions: 21'2" x 19'2"  
Area: 314 sq. ft  
Counted as living area: Yes

Heated: Yes  
Finished: Yes  
Enclosed: Yes  
Contiguous: Yes  
Permitted: Yes  
Wet space: No  
Addition: No  
Conversion: No

**8** Floor 1 - Room



Dimensions: 30'3" x 44'0"  
Area: 1247 sq. ft  
Counted as living area: Yes

Heated: Yes  
Finished: Yes  
Enclosed: Yes  
Contiguous: Yes  
Permitted: Yes  
Wet space: No  
Addition: No  
Conversion: No

**2519 Gresham Road Southeast, Atlanta, Georgia  
30316, United States, primary**

**9 Floor 1 - Electrical Room**



**Dimensions: 3'7" x 7'10"**  
**Area: 28 sq. ft**  
**Counted as living area: No**

**Heated: No**  
**Finished: No**  
**Enclosed: Yes**  
**Contiguous: Yes**  
**Permitted: Yes**  
**Wet space: No**  
**Addition: No**  
**Conversion: No**