

OXFORD MILLS

1350-1530 S LAPEER RD, OXFORD, MI 48371

1,225 - 26,097 SF AVAILABLE | POTENTIAL TO COMBINE THE 6,845 SF, 4,276 SF, & 14,976 SF SPACES

FOR LEASE



KATHLEEN SIMOS

248.406.1761

ksimos@keystonecres.com

GREG NEWMAN

248.406.7113

gnewman@keystonecres.com



OXFORD MILLS

1350-1530 S LAPEER RD, OXFORD, MI 48371

ADDITIONAL PHOTOS



KATHLEEN SIMOS

248.406.1761

ksimos@keystonecres.com

GREG NEWMAN

248.406.7113

gnewman@keystonecres.com



OXFORD MILLS

1350-1530 S LAPEER RD, OXFORD, MI 48371

SITE PLAN



KATHLEEN SIMOS

248.406.1761

ksimos@keystonecres.com

GREG NEWMAN

248.406.7113

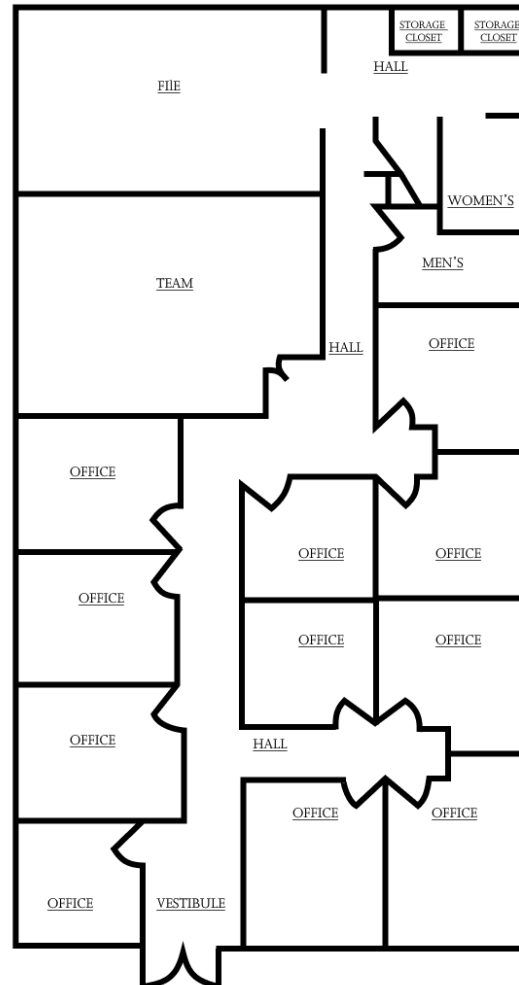
gnewman@keystonecres.com



OXFORD MILLS

1350-1530 S LAPEER RD, OXFORD, MI 48371

SUITE 1460



KATHLEEN SIMOS

248.406.1761

ksimos@keystonecres.com

GREG NEWMAN

248.406.7113

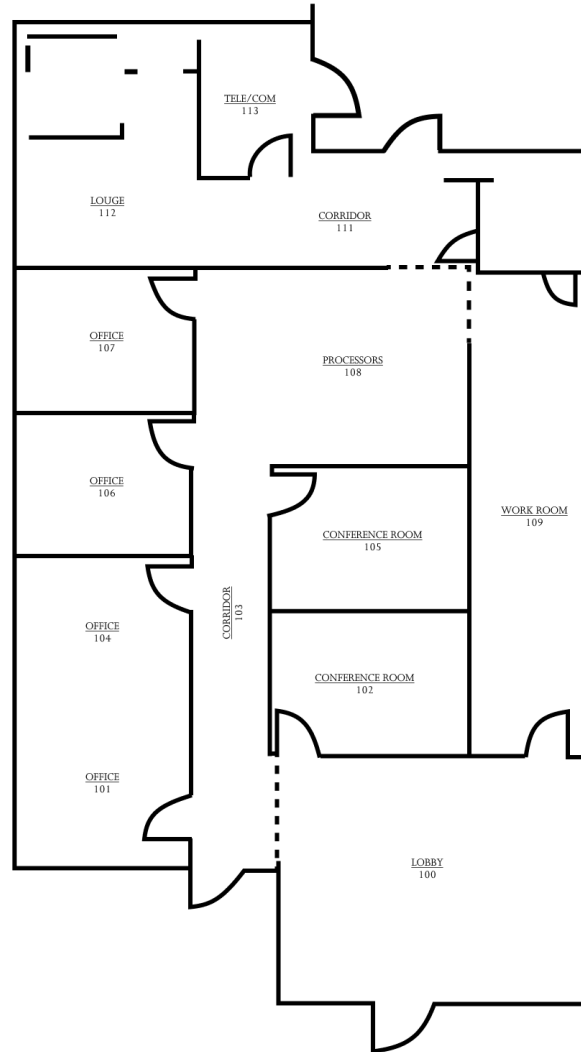
gnewman@keystonecres.com



OXFORD MILLS

1350-1530 S LAPEER RD, OXFORD, MI 48371

SUITE 1500



KATHLEEN SIMOS

248.406.1761

ksimos@keystonecres.com

GREG NEWMAN

248.406.7113

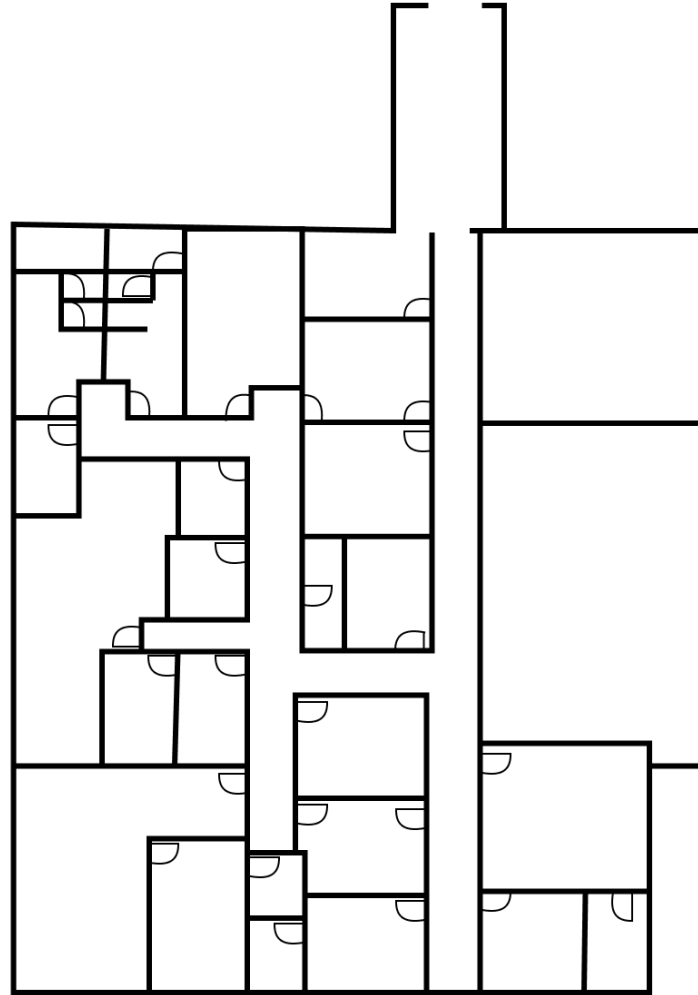
gnewman@keystonecres.com



OXFORD MILLS

1350-1530 S LAPEER RD, OXFORD, MI 48371

SUITE 1500C



KATHLEEN SIMOS

248.406.1761

ksimos@keystonecres.com

GREG NEWMAN

248.406.7113

gnewman@keystonecres.com



OXFORD MILLS

1350-1530 S LAPEER RD, OXFORD, MI 48371

SUITE 1400 | 2,400SF OFFICE



KATHLEEN SIMOS

248.406.1761

ksimos@keystonecres.com

GREG NEWMAN

248.406.7113

gnewman@keystonecres.com



OXFORD MILLS

1350-1530 S LAPEER RD, OXFORD, MI 48371

TRADE AERIAL



KATHLEEN SIMOS

248.406.1761

ksimos@keystonecres.com

GREG NEWMAN

248.406.7113

gnewman@keystonecres.com



OXFORD MILLS

1350-1530 S LAPEER RD, OXFORD, MI 48371

DEMOGRAPHICS

POPULATION	1 MILE	3 MILES	5 MILES
Total Population	3,179	27,543	51,640
Average Age	37.2	38.0	38.0
Average Age (Male)	35.9	35.7	36.4
Average Age (Female)	38.3	39.1	38.9

HOUSEHOLDS & INCOME	1 MILE	3 MILES	5 MILES
Total Households	1,205	10,623	19,098
# of Persons per HH	2.6	2.6	2.7
Average HH Income	\$84,959	\$83,341	\$88,475
Average House Value	\$305,423	\$296,659	\$278,850

ETHNICITY (%)	1 MILE	3 MILES	5 MILES
Hispanic	2.5%	2.5%	3.2%

RACE	1 MILE	3 MILES	5 MILES
Total Population - White	3,069	26,340	48,502
Total Population - Black	31	352	803
Total Population - Asian	26	353	880
Total Population - Hawaiian	0	0	0
Total Population - American Indian	12	49	129
Total Population - Other	9	156	723

* Demographic data derived from 2020 ACS - US Census



KATHLEEN SIMOS

248.406.1761
ksimos@keystonecres.com

GREG NEWMAN

248.406.7113
gnewman@keystonecres.com



OXFORD MILLS

1350-1530 S LAPEER RD, OXFORD, MI 48371

BROKERS



KATHLEEN SIMOS

Advisor

ksimos@keystonecres.com



GREG NEWMAN

Principal

gnewman@keystonecres.com

KATHLEEN SIMOS

248.406.1761

ksimos@keystonecres.com

GREG NEWMAN

248.406.7113

gnewman@keystonecres.com

