



WAREHOUSE/FLEX/OFFICE FOR LEASE

FORMER NCR FACILITY

200 Highway 74, Peachtree City, GA 30269

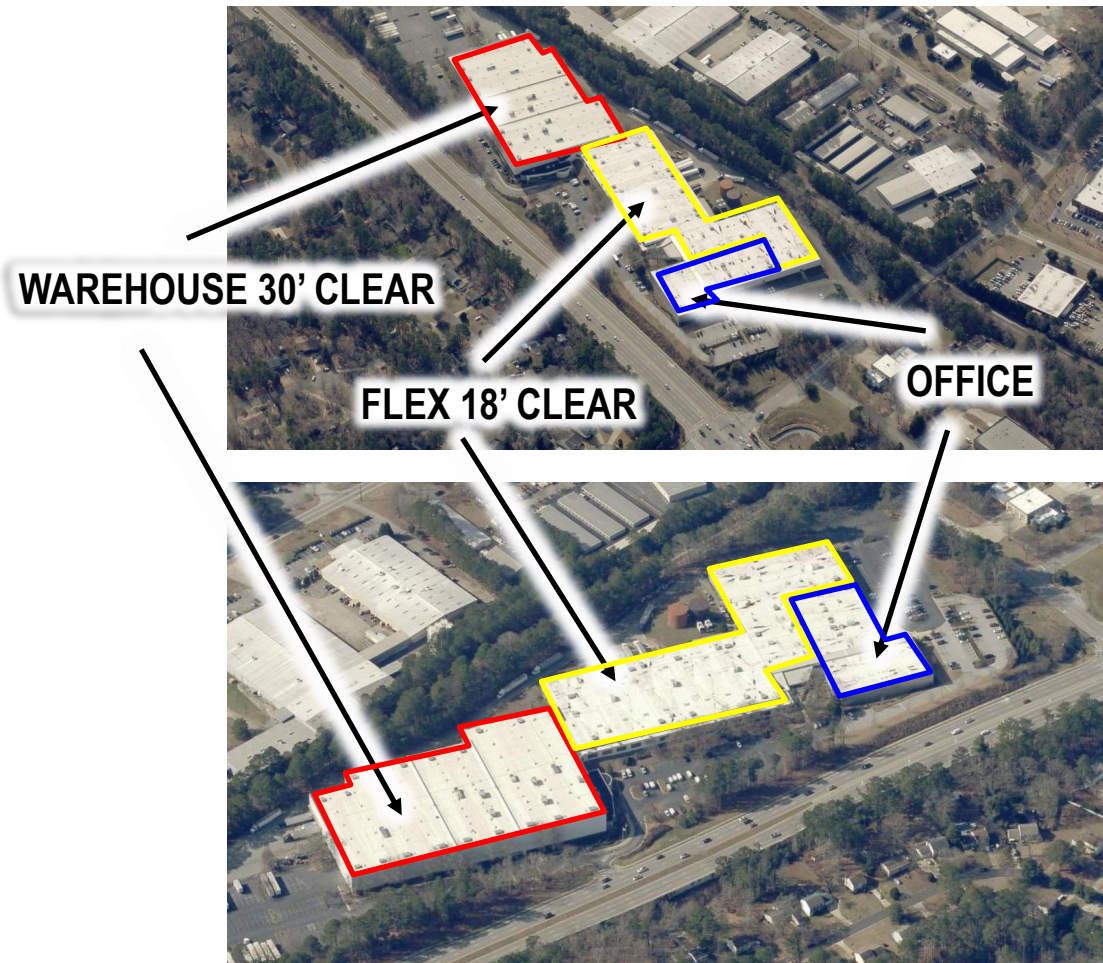


Exclusively offered by Edify CRE, LLC

The information presented herein is provided as is, without warranty of any kind.
Edify CRE, LLC assumes no liability for errors and omissions

EdifyCRE
COMMERCIAL REAL ESTATE

Property Summary



Warehouse - 30' Clear Height | ~137,600 sq ft (fully racked)

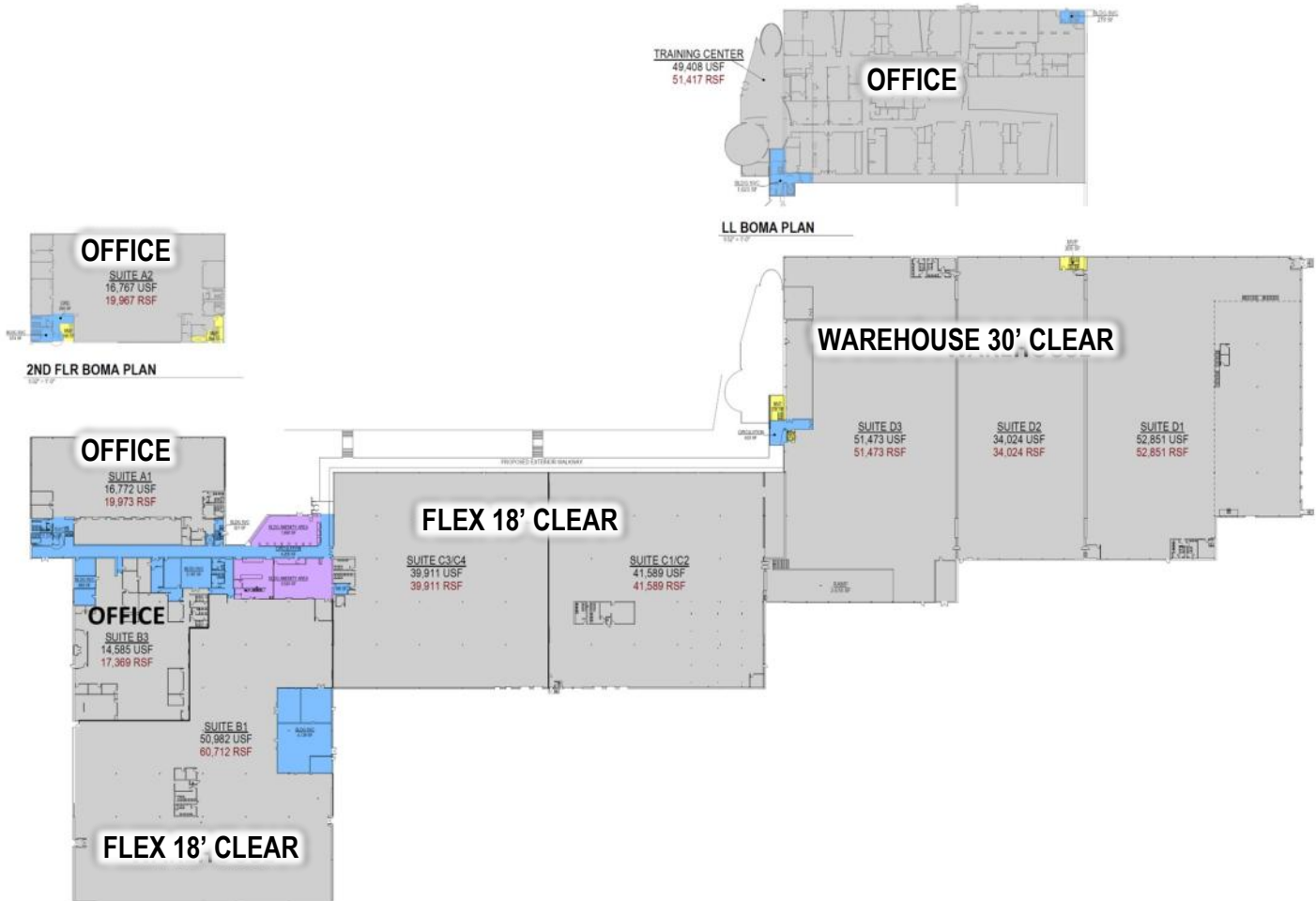
Warehouse/Flex - 18' Clear Height | ~120,000 sq ft (can be subdivided to 40,000 sq ft)

Office | ~80,000 sq ft (can be subdivided to 10,000 sq ft)

General Building Specs

Total Sq FT	396,043 Sq Ft
Dock-High Doors/Drive-in Ramps	9/3
Sprinkler System	Wet - Full Building
Car Parking	665 Spaces
Power	2,500 and 1,500 KVA Transformers Serving Building

Property Floorplan



Warehouse - 30' Clear Height | ~137,600 sq ft (fully racked)

Warehouse/Flex - 18' Clear Height | ~120,000 sq ft (can be subdivided to 40,000 sq ft)

Office | ~80,000 sq ft (can be subdivided to 10,000 sq ft)

General Building Specs

Total Sq FT	396,043 Sq Ft
Dock-High Doors/Drive-in Ramps	9/3
Sprinkler System	Wet - Full Building
Car Parking	665 Spaces
Power	2,500 and 1,500 KVA Transformers Serving Building

PLANNED EXTERIOR RENOVATION - 2026

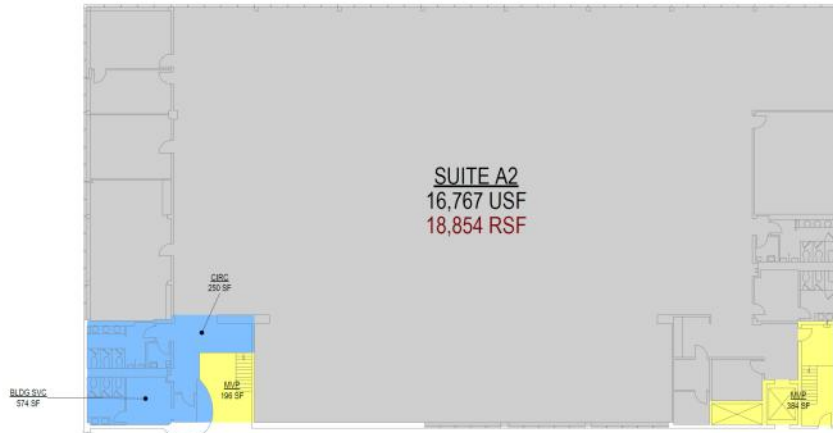


OFFICE AREA



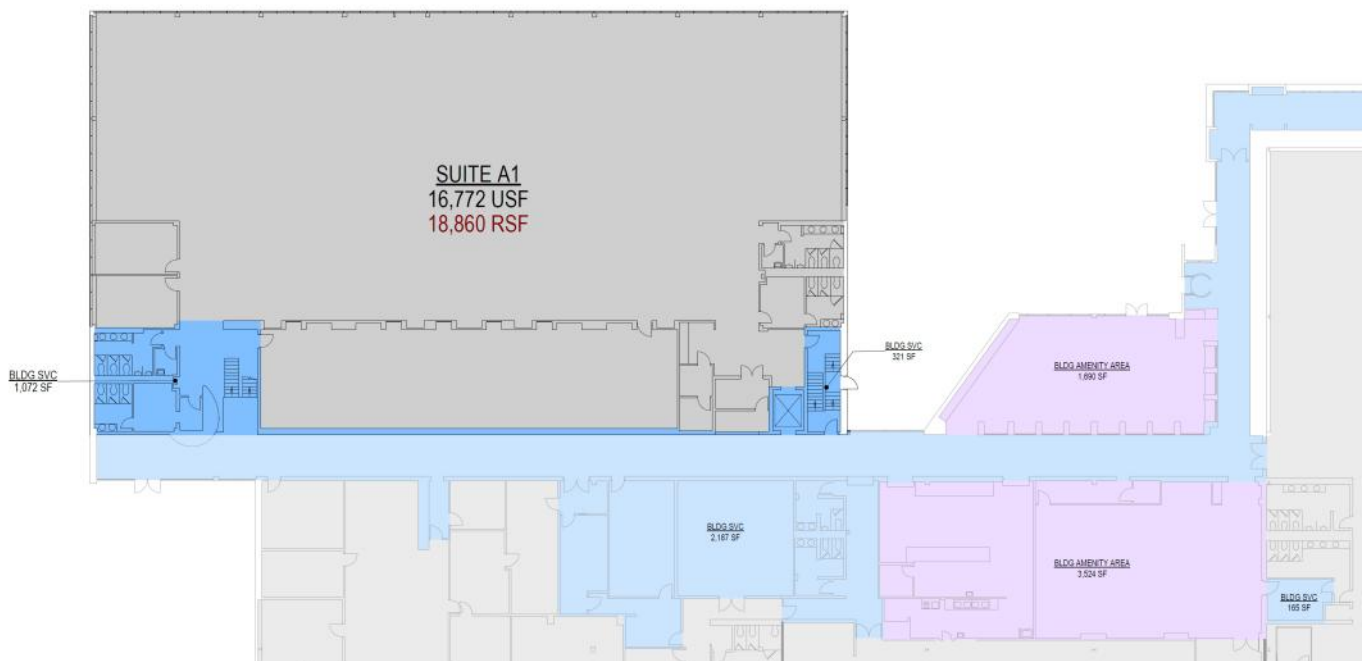
The information presented herein is provided as is, without warranty of any kind. Edify CRE, LLC assumes no liability for errors and omissions

OFFICE AREA



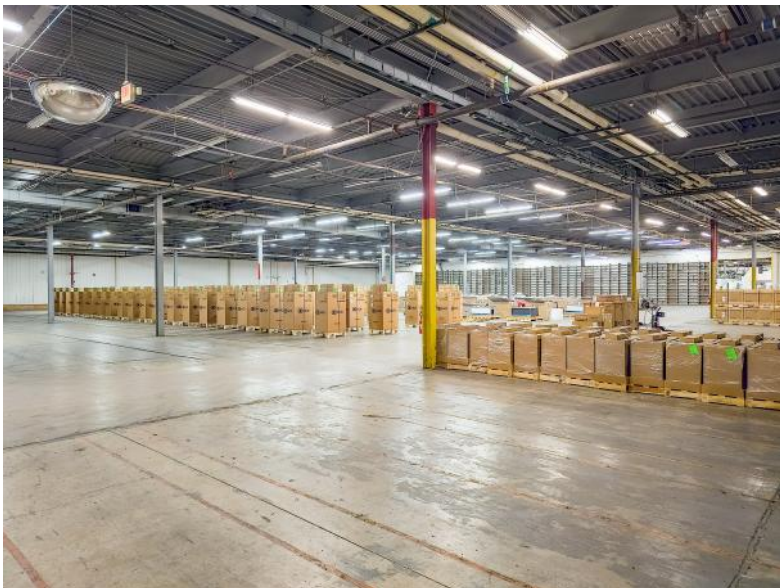
BUILDING A SECOND FLOOR PLAN

1/8" = 1'-0" | AP001



BUILDING A FIRST FLOOR PLAN

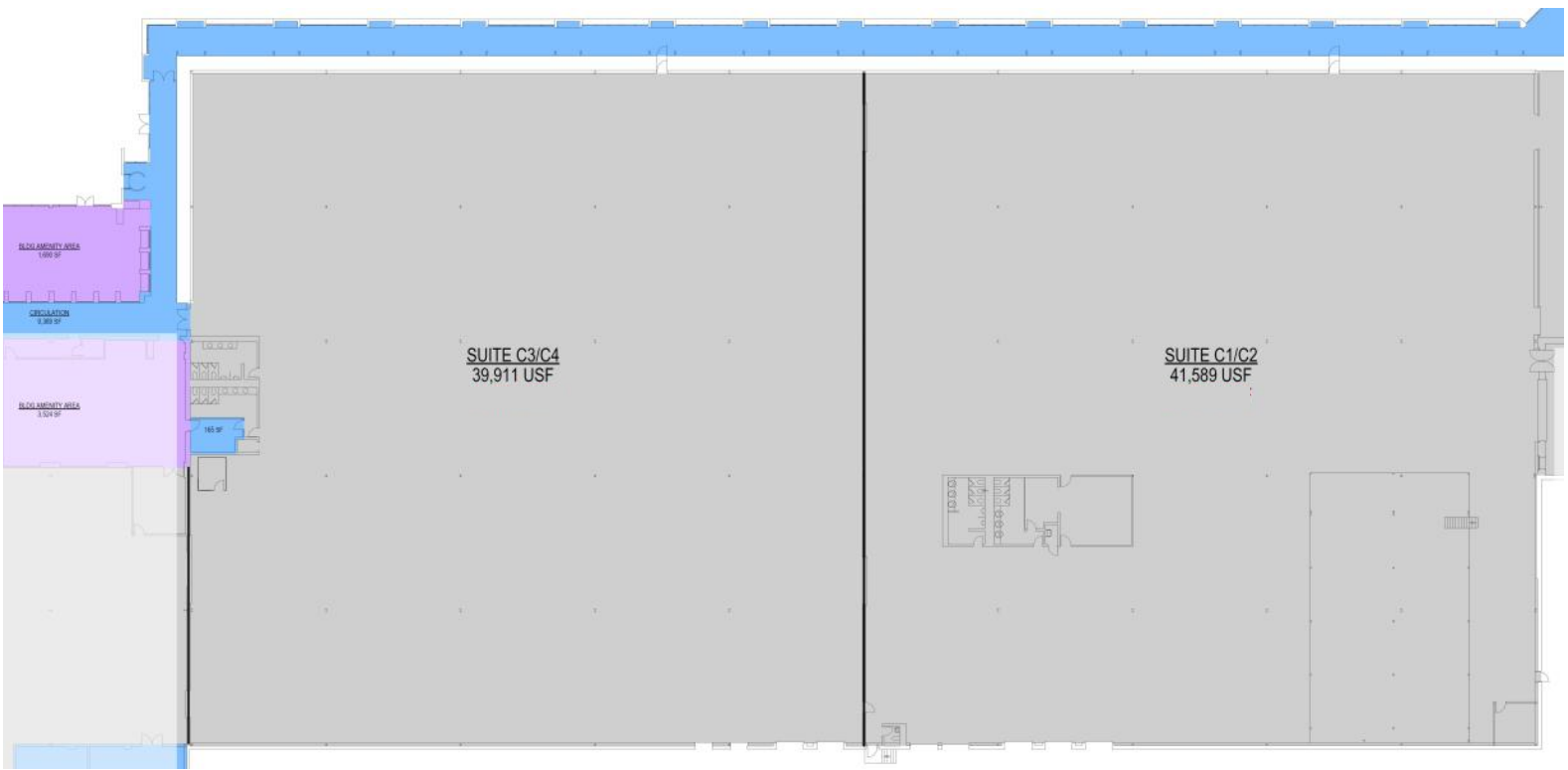
FLEX - 18' CLEAR BLDG B & C



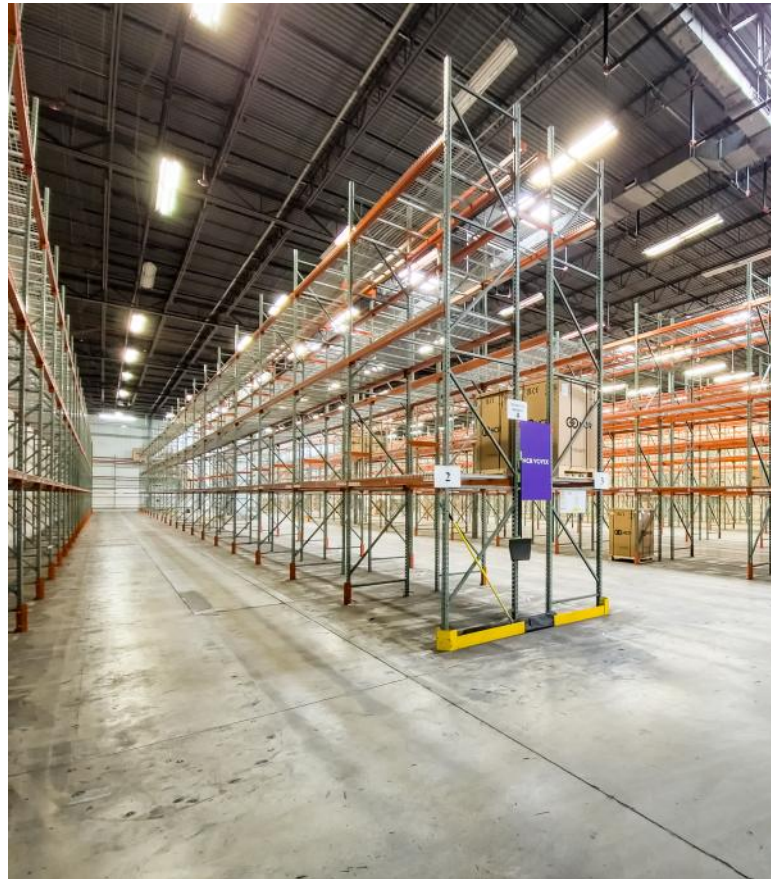
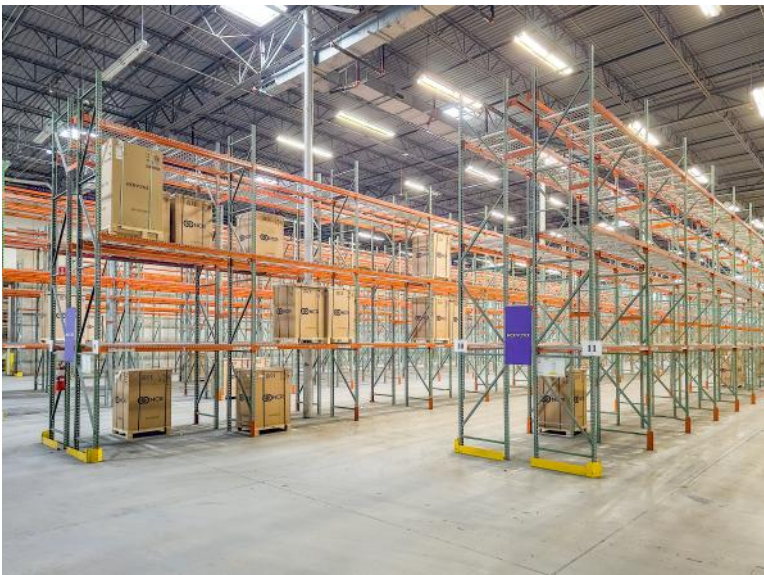
FLEX - 18' CLEAR - BLDG B



FLEX - 18' CLEAR - BLDG C



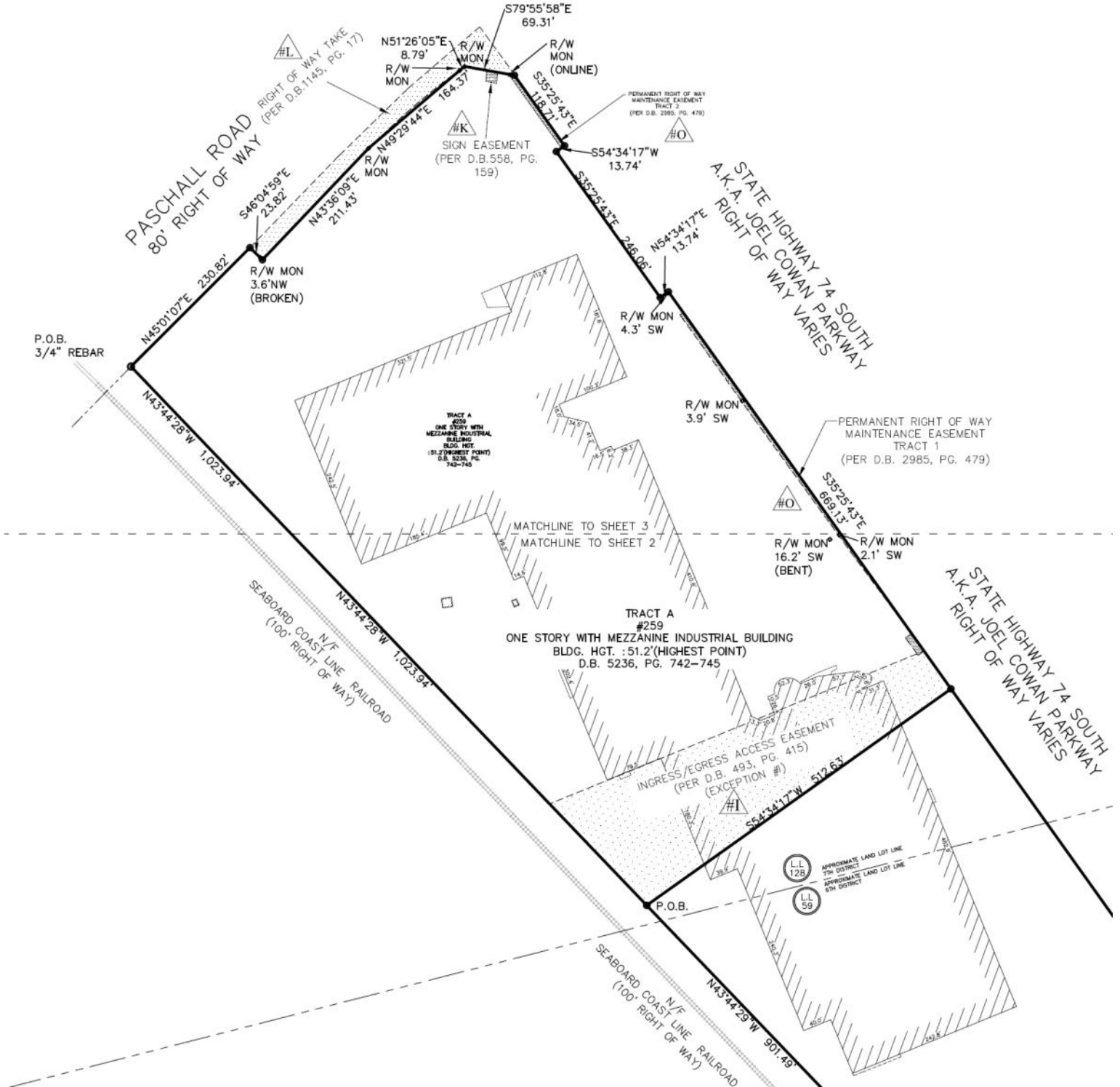
WAREHOUSE - 30' CLEAR FULLY RACKED



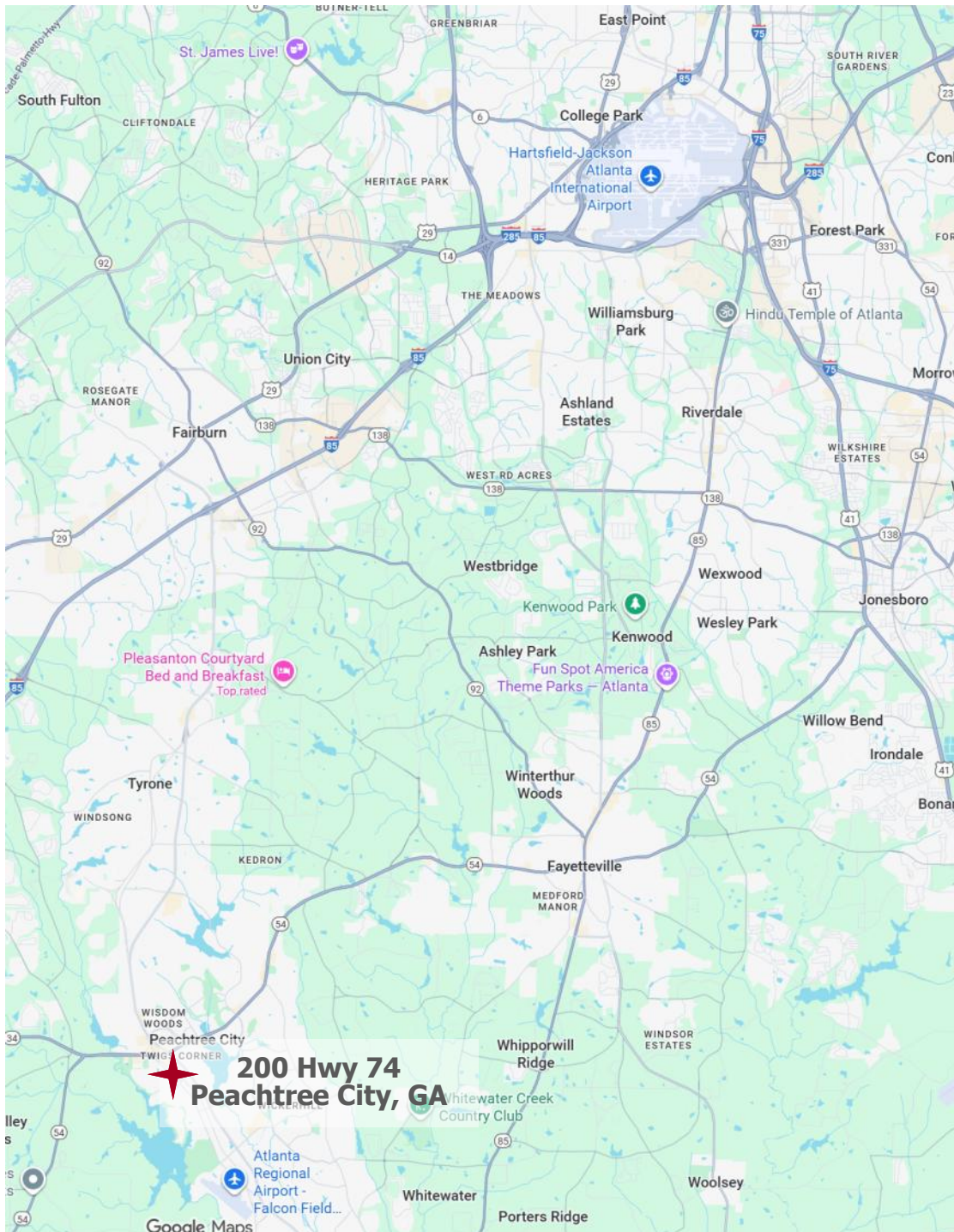
WAREHOUSE - 30' CLEAR FULLY RACKED



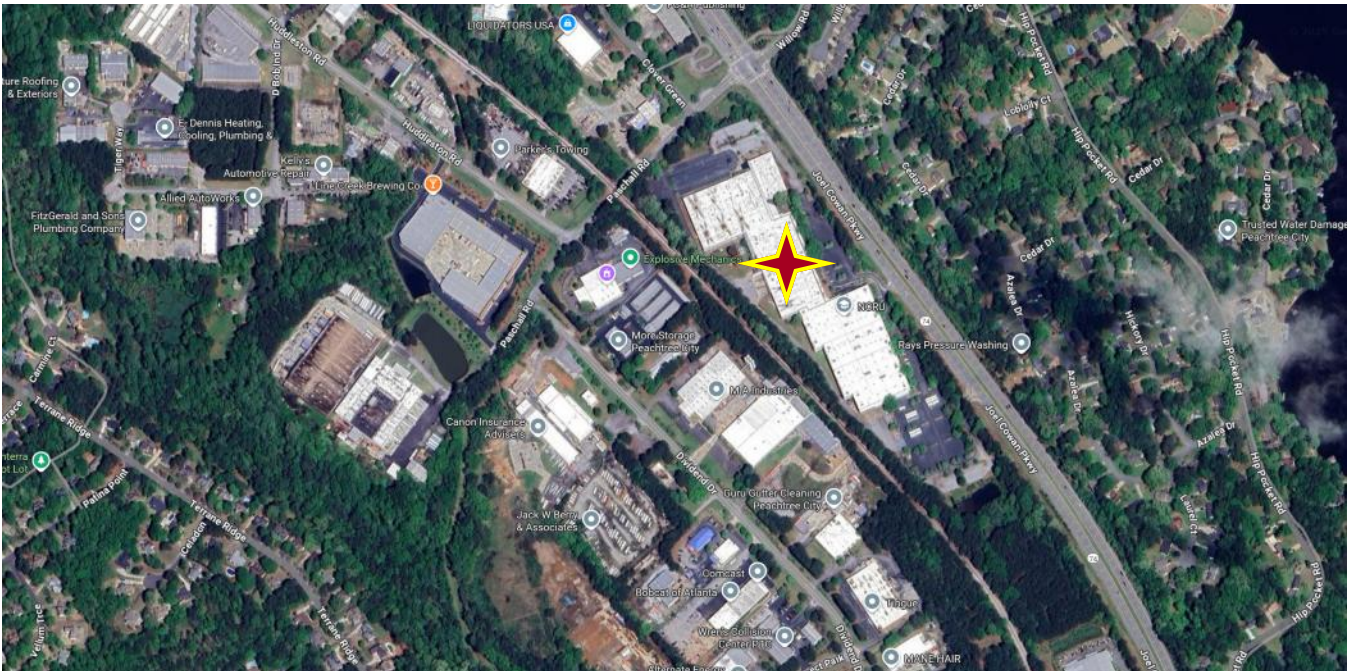
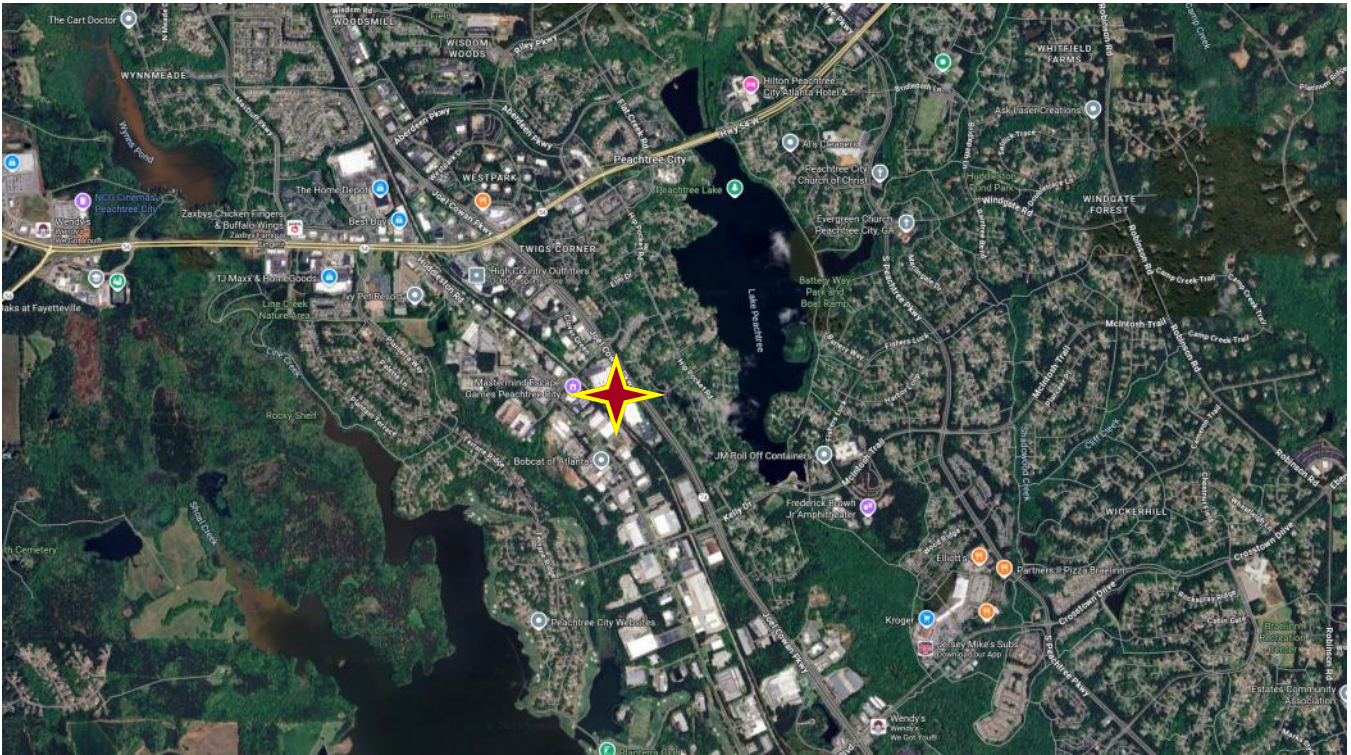
Site Plan

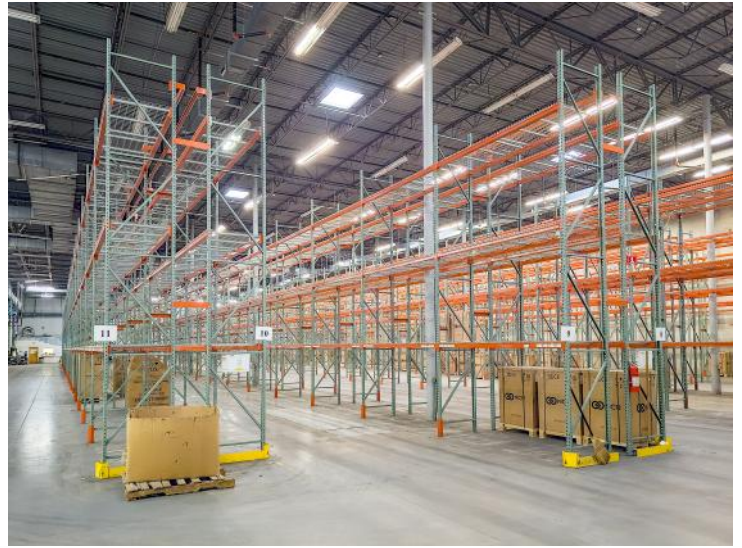


Location Map



Aerials





The information presented herein is provided as is, without warranty of any kind.
Edify CRE, LLC assumes no liability for errors and omissions

1029 Peachtree Pkwy
Suite 323
Peachtree City, GA 30269

FOR INFORMATION CONTACT
Brad Jubin, CCIM
678-481-5676
Brad@EdifyCRE.com