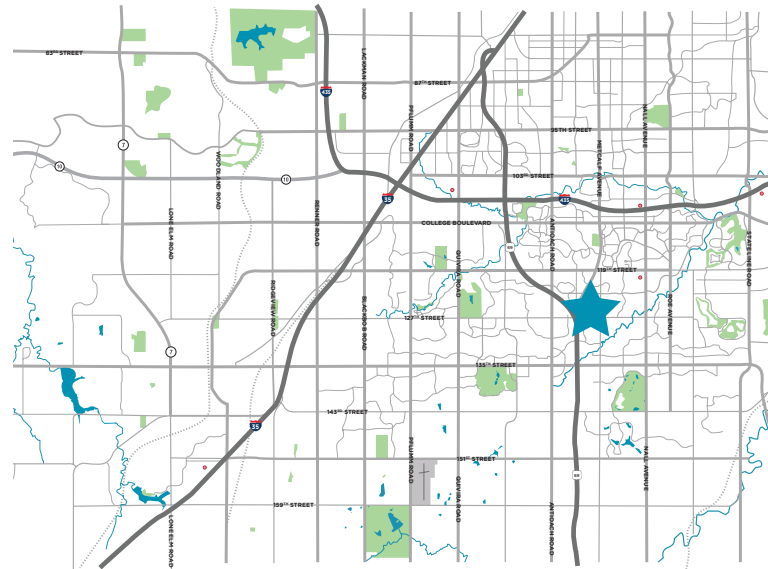


FOR SALE OR LEASE  
7400 W 129th Street  
Overland Park, KS



## Property Highlights

- Prime Owner/User Opportunity - This well-maintained 38,866 SF Class A office building offers a rare chance to own or lease premium space with existing quality tenants generating steady income.
- Total Building Size: 38,866 SF
- Available Space: Up to 23,052 SF on the first floor
  - Suite 100: 19,645 SF
  - Suite 101: 3,407 SF
- Lease Rate: \$25.00/SF Full Service
- Sale Price: \$5,750,000 (\$145.74/SF)
- Convenient access from US-69 and 135th Street
- Close to shopping, dining, and essential services

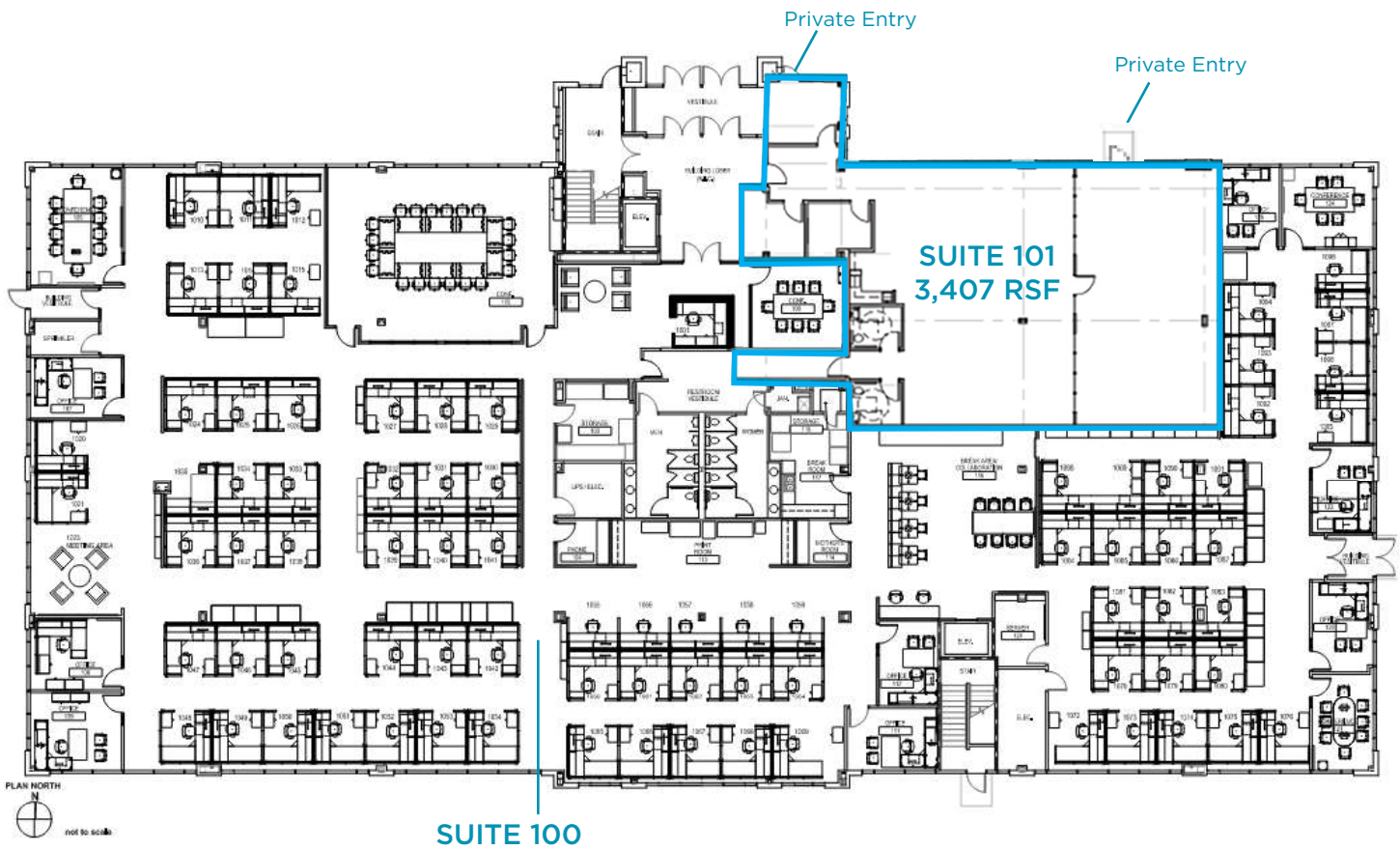


## Contact

MARTY GILCHRIST, CCIM  
Senior Associate  
+1 816 216 5655  
marty.gilchrist@cushwake.com

GIBSON KERR, CCIM  
Managing Director  
+1 816 412 0212  
gib.kerr@cushwake.com

4600 Madison Avenue, Suite 800  
Kansas City, MO 64112  
Main +1 816 221 2200  
Fax +1 913 273 1398  
[cushmanwakefield.com](http://cushmanwakefield.com)



## Contact

MARTY GILCHRIST, CCIM  
Senior Associate  
+1 816 216 5655  
marty.gilchrist@cushwake.com

GIBSON KERR, CCIM  
Managing Director  
+1 816 412 0212  
gib.kerr@cushwake.com

Lobby Access

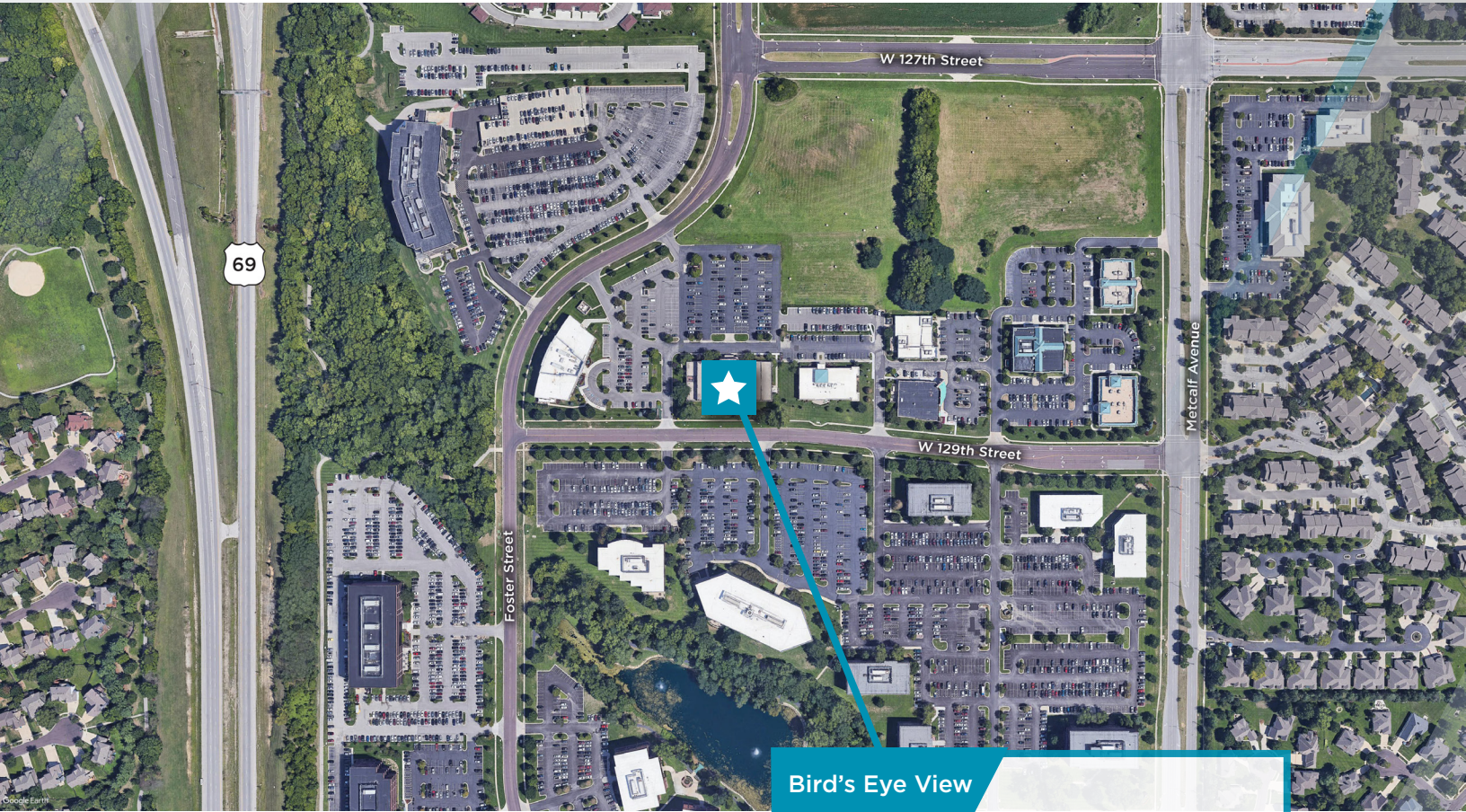


Break Room



First Floor





Bird's Eye View



## Contact

MARTY GILCHRIST, CCIM  
Senior Associate  
+1 816 216 5655  
marty.gilchrist@cushwake.com

GIBSON KERR, CCIM  
Managing Director  
+1 816 412 0212  
gjb.kerr@cushwake.com

4600 Madison Avenue, Suite 800  
Kansas City, MO 64112  
Main +1 816 221 2200  
Fax +1 913 273 1398  
[cushmanwakefield.com](http://cushmanwakefield.com)