



# Hopkins Office Center

33 10TH AVENUE SOUTH, HOPKINS, MN

## OFFICE FOR LEASE

### Availability

Suite 100 - 1,078 SF

Suite 260 - 746 SF

### Lease Rate

\$13.00/sf

### Tax/Opex Rate

\$15.49/sf

## PROPERTY HIGHLIGHTS



### Building Size

29,122 SF



### Downtown Hopkins Location

Adjacent to Hopkins city park and surrounded by walkable area amenities.



### Abundant Parking

Convenient surface lot

*For information, please contact:*

#### Steve Shepherd SIOR

Senior Managing Director

t 612-430-9973

steve.shepherd@nmrk.com

#### Matt Elder CCIM, SIOR

Senior Managing Director

t 612-430-9974

matt.elder@nmrk.com

#### Amanda Ferlita

Associate

t 612-440-0007

amanda.ferlita@nmrk.com

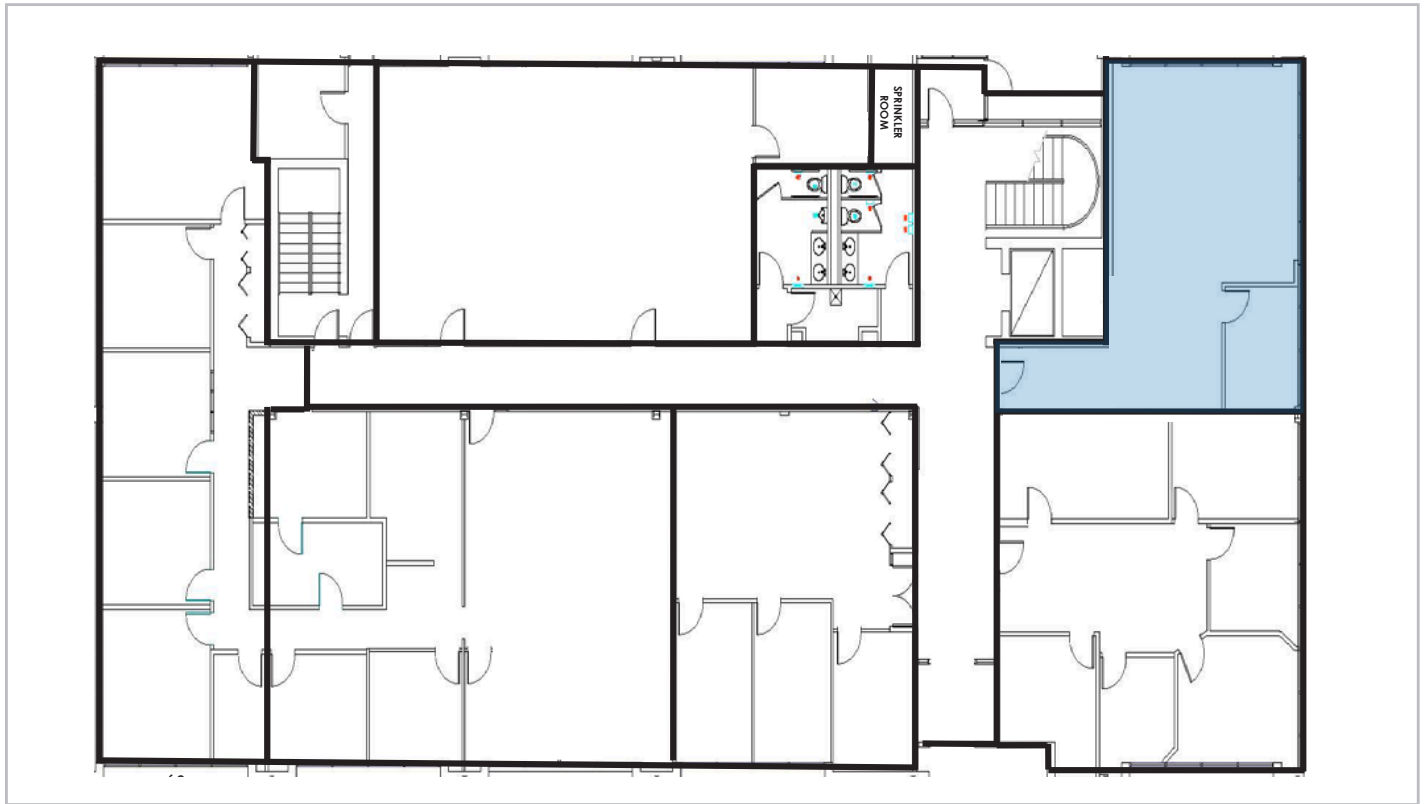
100 S Fifth Street,

Suite 2100,

Minneapolis, MN 55102

[nmrk.com](http://nmrk.com)

First Floor



**Availability**

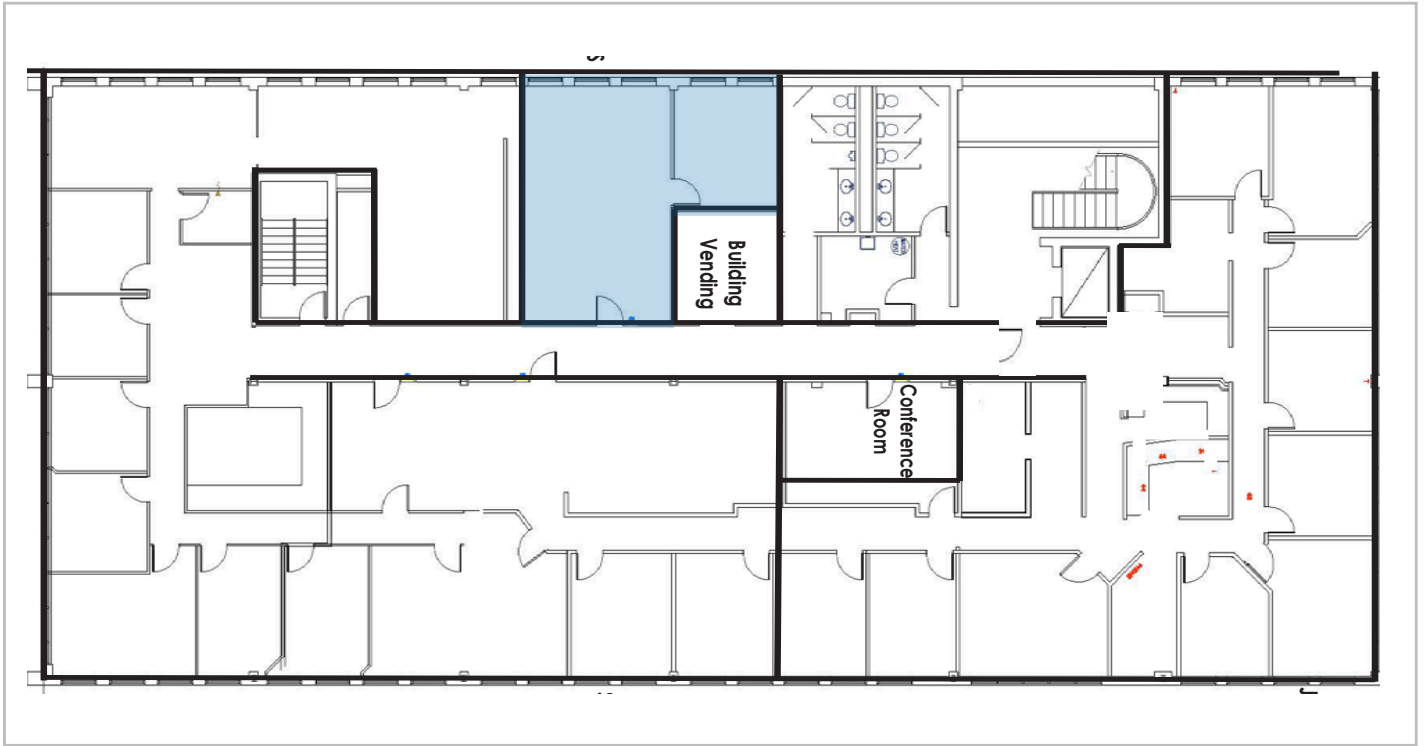
Suite 100

1,078 SF

Building Photos



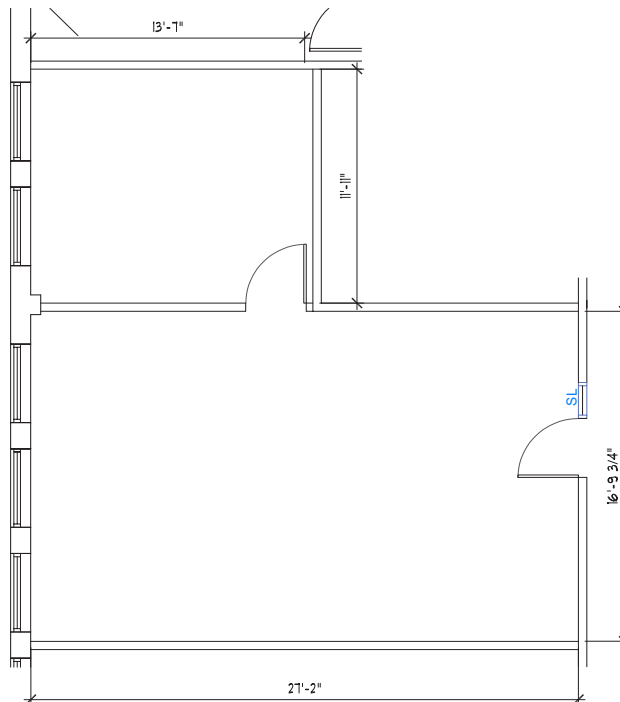
Second Floor



Availability

Suite 260

746 SF



HOPKINS OFFICE CENTER | 33 10TH AVENUE SOUTH, HOPKINS, MN

Area Amenities



10 miles to  
Downtown  
Minneapolis



Surrounded by  
abundant walkable  
amenities



20+ dining options  
within a 3 mile  
radius



Easy access to  
169 & Hwy 7



Less than 10  
minutes to  
Knollwood Mall



## FOR MORE INFORMATION:

---

**Steve Shepherd** SIOR

*Senior Managing Director*

612-430-9973

steve.shepherd@nmrk.com

**Matt Elder** CCIM, SIOR

*Senior Managing Director*

612-430-9974

matt.elder@nmrk.com

**Amanda Ferlita**

*Associate*

t 612-440-0007

amanda.ferlita@nmrk.com

Minneapolis  
Fifth Street Towers  
100 South 5th Street, Suite 2100  
Minneapolis, MN 55402  
612-430-9950

**NEWMARK**



The information contained herein has been obtained from sources deemed reliable but has not been verified and no guarantee, warranty or representation, either express or implied, is made with respect to such information. Terms of sale or lease and availability are subject to change or withdrawal without notice.