

FOR SALE

BEACH PARK WATERFRONT SF RESIDENTIAL LOT

52 Sandpiper Road, Tampa, FL 33609-3528



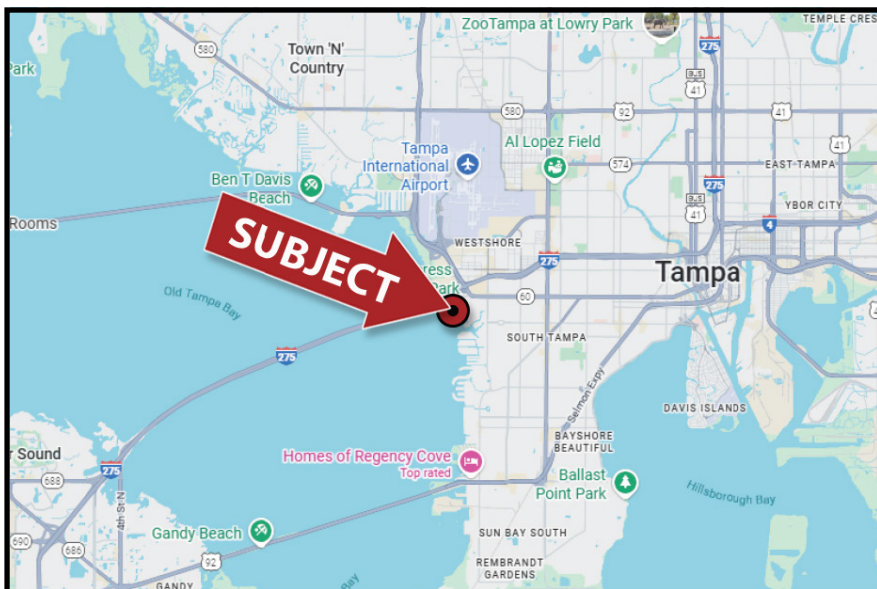
THE
ROSS REALTY
GROUP, INC.
COMMERCIAL SALES AND LEASING



FEATURES

- Beach Park: 11,326 Sq Ft Waterfront Lot
- 92' Water Frontage - New Seawall
- Located in a quiet street in the heart of Beach Park looking into open area of Tampa Bay Marina
- Minutes from downtown, Tampa International Airport, top-rated restaurants, International Plaza & Westshore Mall
- Top A-rated School Districts - Grady Elementary, Coleman Middle School & Plant High School
- Utilities: Water, Sewer, Trash: City of Tampa
Electric: TECO
- Folio Number: 114255-0000
- Flood Zone: AE
- SALE PRICE: \$2,640,000.00

LOCATION MAP



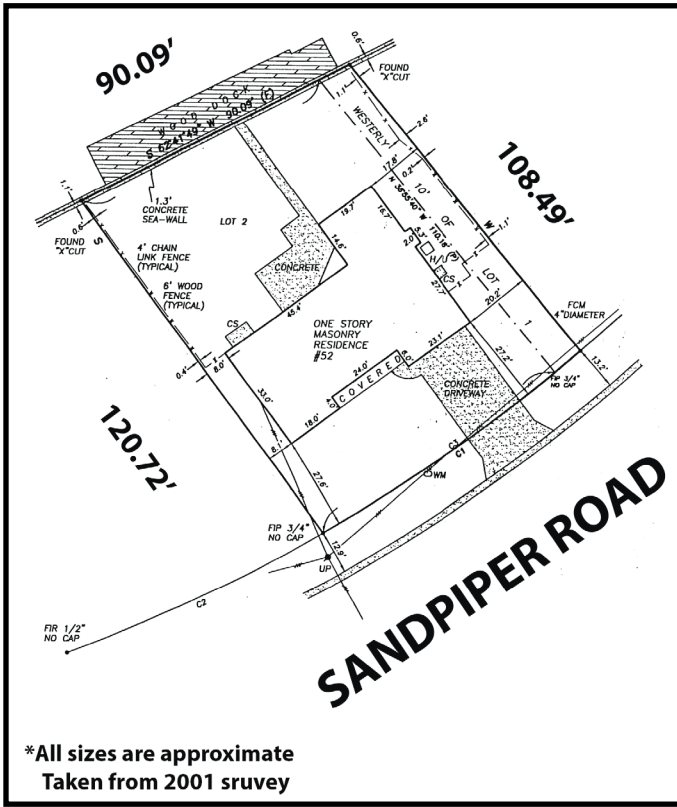
Elliott M. Ross, CCIM
O: 813.755.6700
C: 727.639.3800
elliottross@rossrealty.com

ROSS REALTY GROUP, INC.
Westshore Square
4600 W. Cypress St., Suite 525
Tampa, FL 33607



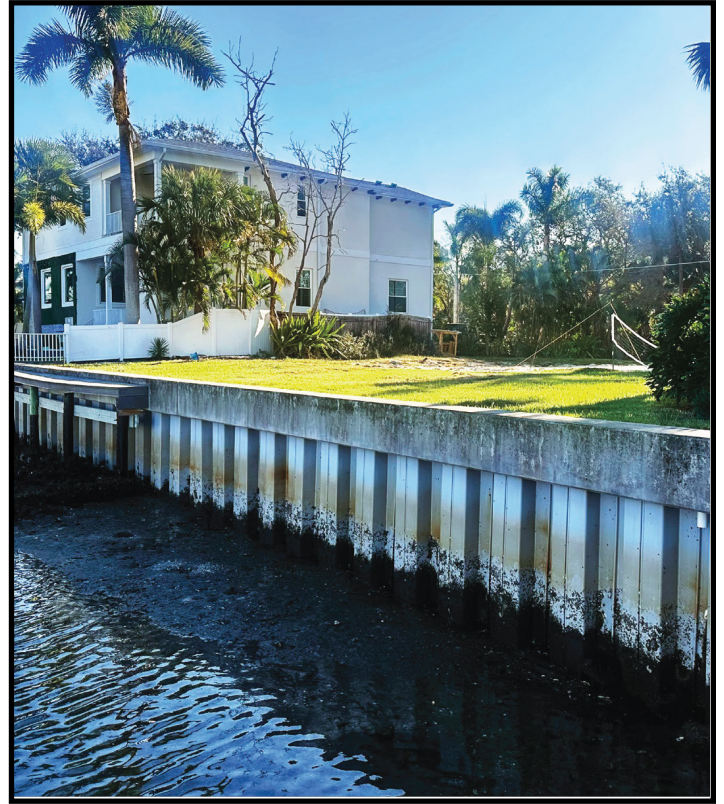
FOR SALE
BEACH PARK WATERFRONT SF RESIDENTIAL LOT
52 Sandpiper Road, Tampa, FL 33609-3528

SURVEY



*All sizes are approximate
 Taken from 2001 survey

SEAWALL



Hillsborough County Parcel Map



Any information given herein is obtained from sources considered reliable. However, we are not responsible for misstatement of facts, errors, omissions, prior sale, withdrawal from market, modification of mortgage commitment, terms and considerations, or change in price without notice. The information supplied herein is for informational purposes only and shall not contain a warranty or assurance that said information is correct. Any person intending to rely upon the information supplied herein should verify said information independently.