

FOR LEASE

2,759 Sq. Ft. Office Space

4920 S. Central Avenue - Forest View, IL

LEASE RATE: \$15.00 psf gross



- | | |
|---|--|
| <ul style="list-style-type: none">• Utilities included in rent• Short or long term leases considered• Eight (8) car parking• Dramatic ceiling height | <ul style="list-style-type: none">• Window line• On site ownership• Part of a multi-tenant complex• Easy highway access
Central Ave @ I55 |
|---|--|

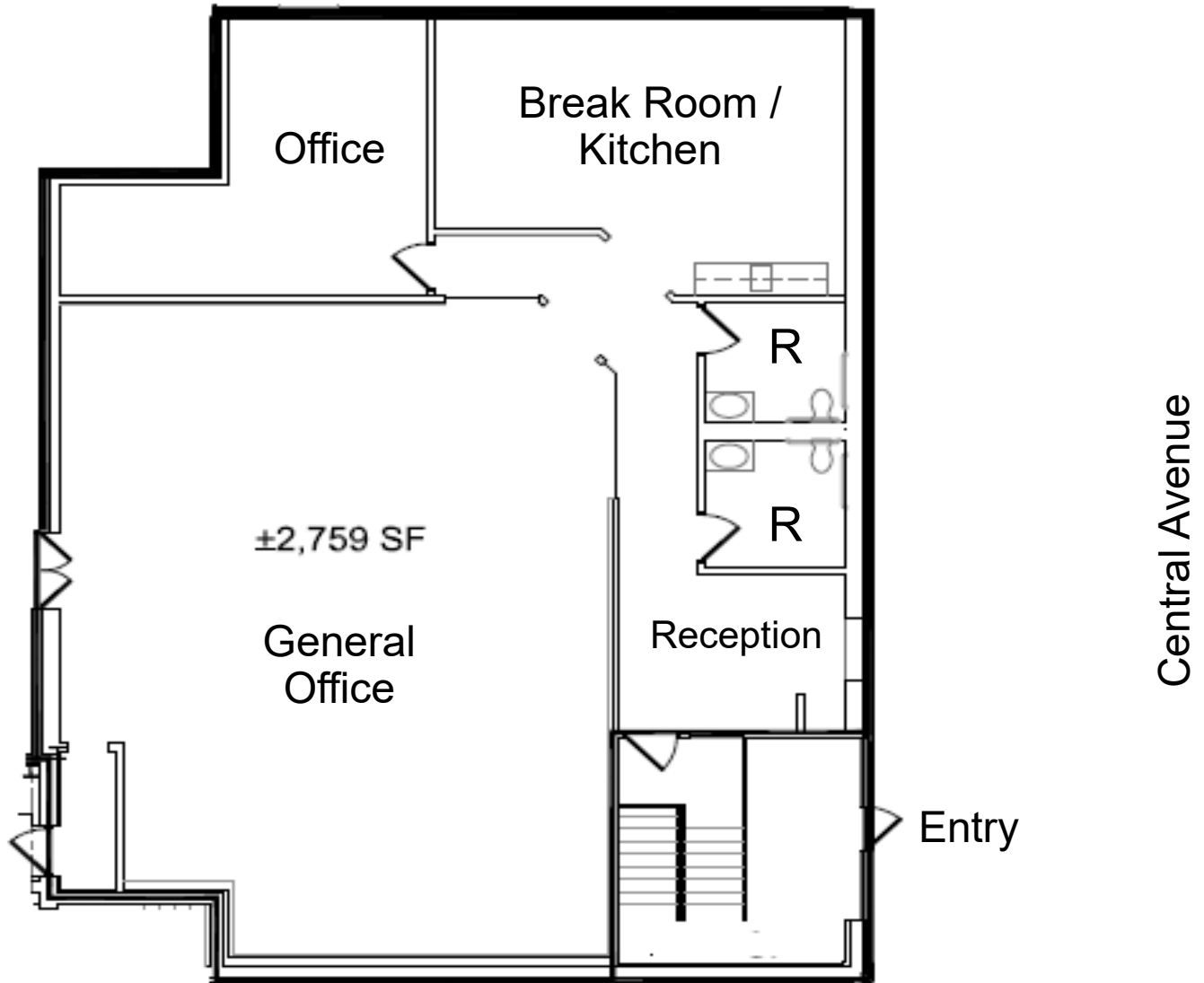


Exclusively Offered by:
Daniel Chopp
(708) 387-2640
dan@choppcommercial.com

All information herein is from sources deemed reliable but not guaranteed accurate.
Subject to errors, omissions, and to change of price and terms, prior sale or lease, all without notice.

Office Layout

4920 S. Central Avenue - Forest View, IL

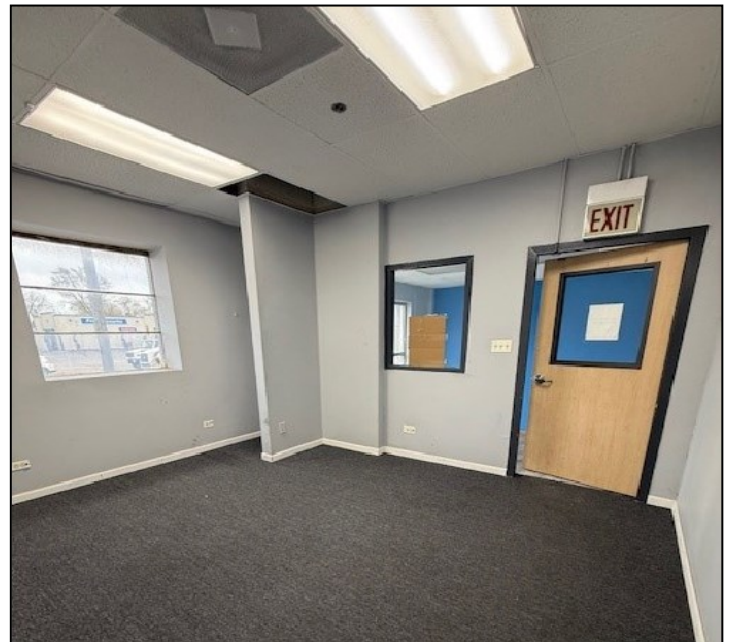


Exclusively Offered by:
Daniel Chopp
(708) 387-2640
dan@choppcommercial.com

All information herein is from sources deemed reliable but not guaranteed accurate.
Subject to errors, omissions, and to change of price and terms, prior sale or lease, all without notice.

Additional Photos

4920 S. Central Avenue - Forest View, IL



Exclusively Offered by:
Daniel Chopp
(708) 387-2640
dan@choppcommercial.com

All information herein is from sources deemed reliable but not guaranteed accurate.
Subject to errors, omissions, and to change of price and terms, prior sale or lease, all without notice.