

511 West 20th Street

WEST CHELSEA
NEW YORK, NY



NEWMARK

Property Details

Location

North block between Tenth and Eleventh Avenues

Approximate Size

Ground Floor 1,500 SF

Term

Negotiable

Ceiling Height

10 FT

Frontage

10 FT on West 20th Street

Term

Negotiable

Ground Floor

Possession

Immediate

Site Status

Vacant- High Line Derm

Rent

Upon request

Neighbors

Steven Alan, Nail Aug (coming soon), Joe & The Juice (coming soon), Cookshop, Cucina Alba, David Zwirner Gallery, Equinox, Hauser & Wirth, Jack Shaiman Gallery, Kurimanzutto, Gagosian Gallery and Intelligentsia Coffee

Comments

Directly adjacent to a Highline entrance and highly visible from the Highline with 8 million annual visitors

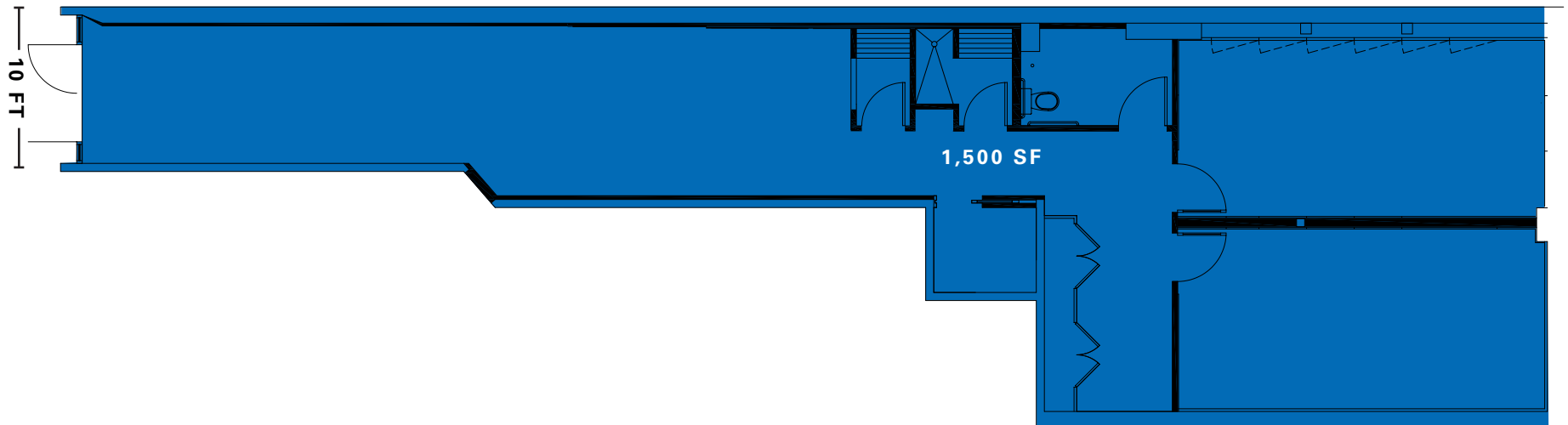
Space is in turn-key condition, with dedicated HVAC, bathroom, shower room and finished floors and lighting

Located in one of Manhattan's wealthiest neighborhoods

Most uses accepted

Located in the the West Chelsea Gallery District, New York's most established Gallery District

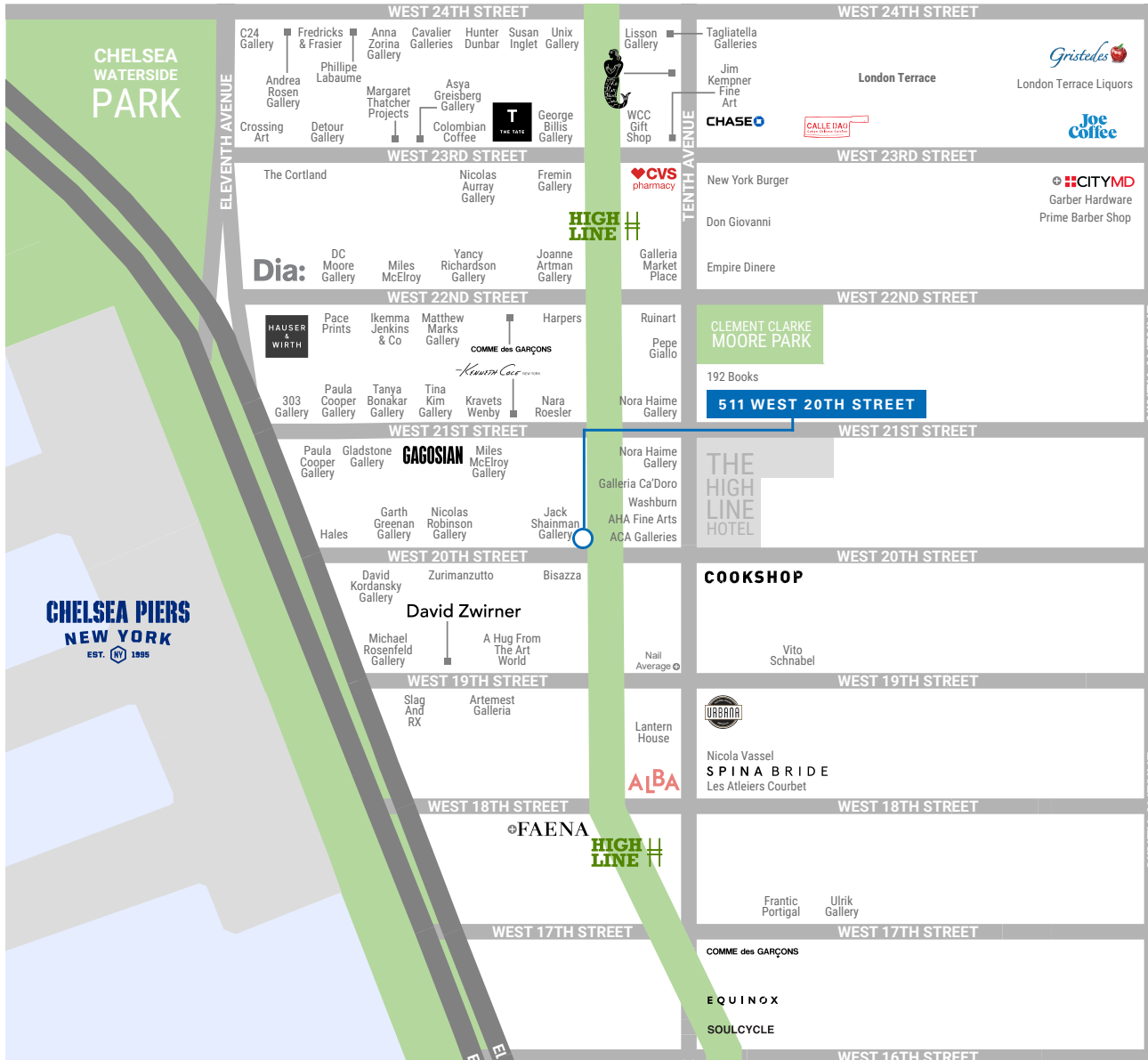
There is an existing blade sign visible from Tenth Avenue and the Highline



511 WEST 20TH STREET



511 WEST 20TH STREET



CONTACT

Andrew Stern
 t 212-351-9353
 andrew.stern@nrmk.com

Ravi Idnani
 t 212-916-2938
 ravi.idnani@nrmk.com

nrmk.com