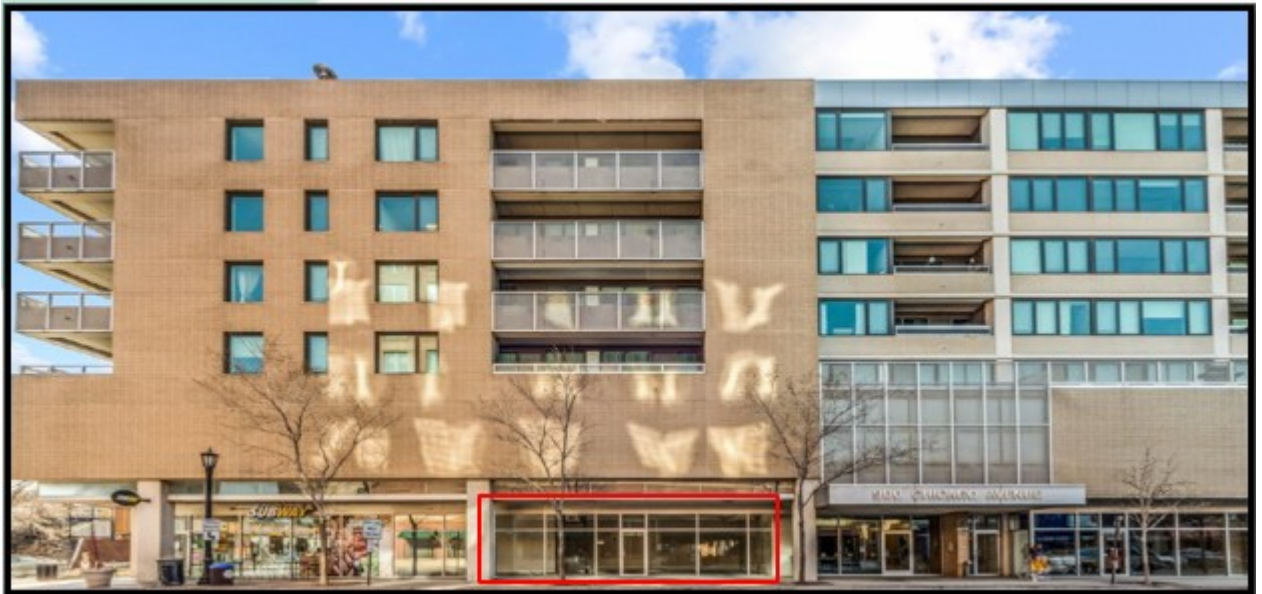


For Lease

900 Chicago Avenue
Evanston, IL

1,477 SF – Suite 102 available Retail / Office Suites
With Indoor / Heated Parking



Overview

- 1 Retail / Office suites for Lease with indoor heated Parking, 9' Windows.
- Spaces may be combined 1,477 total SF.
- High visibility- 14,600 VPD on Chicago Ave., 10,800 VPD on Main Street.
- Signalized intersection, and next to CTA and METRA stations.
- Zoned C1a - Commercial Mixed-Use District.
- Lease Rate / Term: \$35 SF Gross / Negotiable.

Presented by:

Andis Dimants

Managing Broker

(866) 662-7638

adimants@rmxproperty.com

RealtyMetrix, LLC
155 North Wacker Drive
Suite 4250
Chicago, IL 60606



**900 Chicago Avenue
Evanston, IL**

For Lease

**1,477 SF – Suite 102 available Retail / Office Suites
With Indoor / Heated Parking**

Suites and Reserved Parking Available

| SUITE | SF | PARKING | LEASE | RATE |
|--------------|-----------|----------------|--------------|-------------|
| 102 | 1,477 | 1-5 RESERVED | GROSS | \$35 SF |

| DEMOGRAPHICS | .5 MILES | 1 MILE | 2 MILES |
|---------------------|-----------------|---------------|----------------|
| Total Households | 3,686 | 13,238 | 48,037 |
| Total Population | 8,209 | 29,534 | 118,815 |
| Average HH Income | \$122,326 | \$98,463 | \$75,499 |

Presented by:

Andis Dimants

Managing Broker

(866) 662-7638

adimants@rmxproperty.com

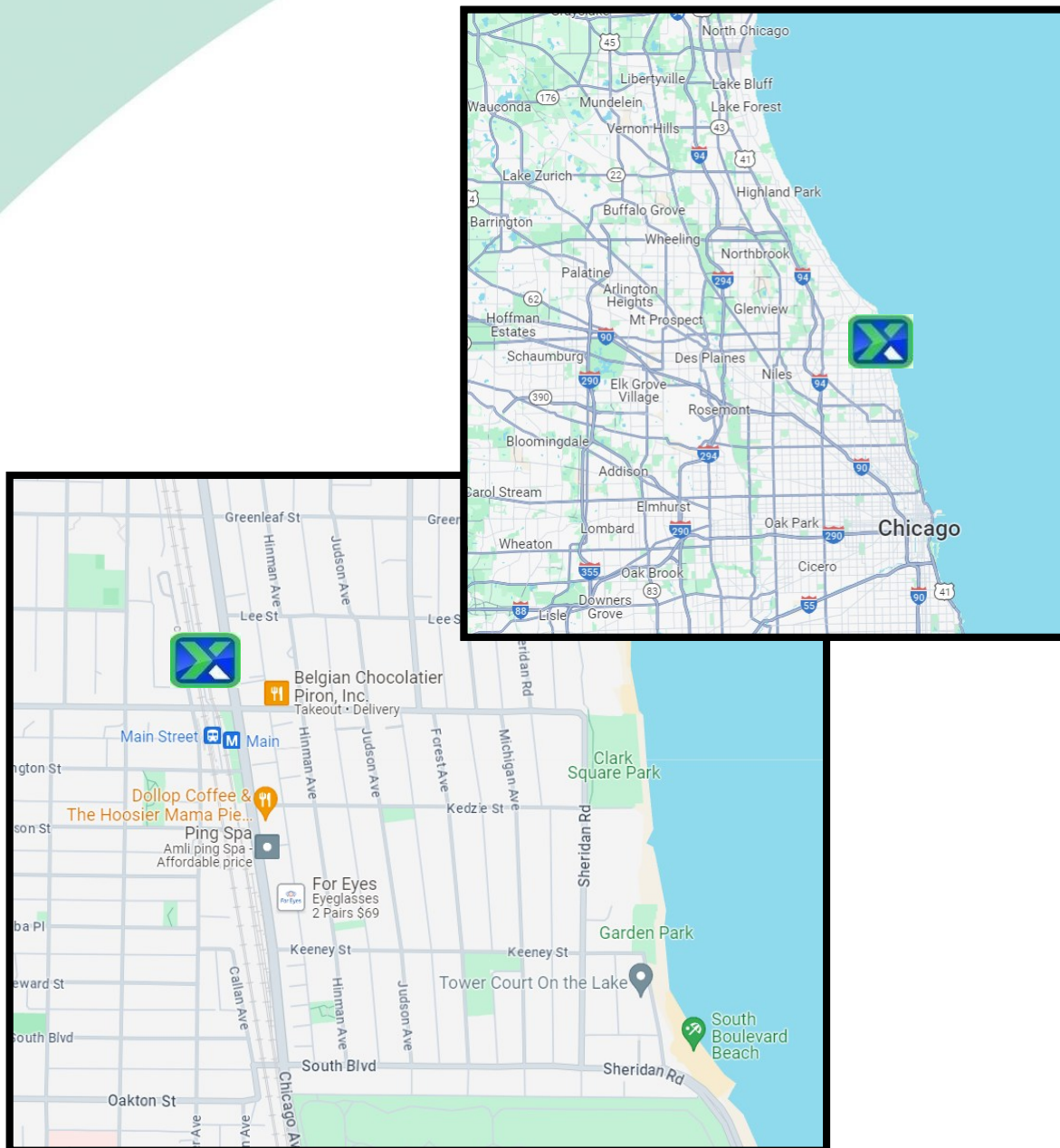
RealtyMetrix, LLC
155 North Wacker Drive
Suite 4250
Chicago, IL 60606



For Lease

900 Chicago Avenue
Evanston, IL

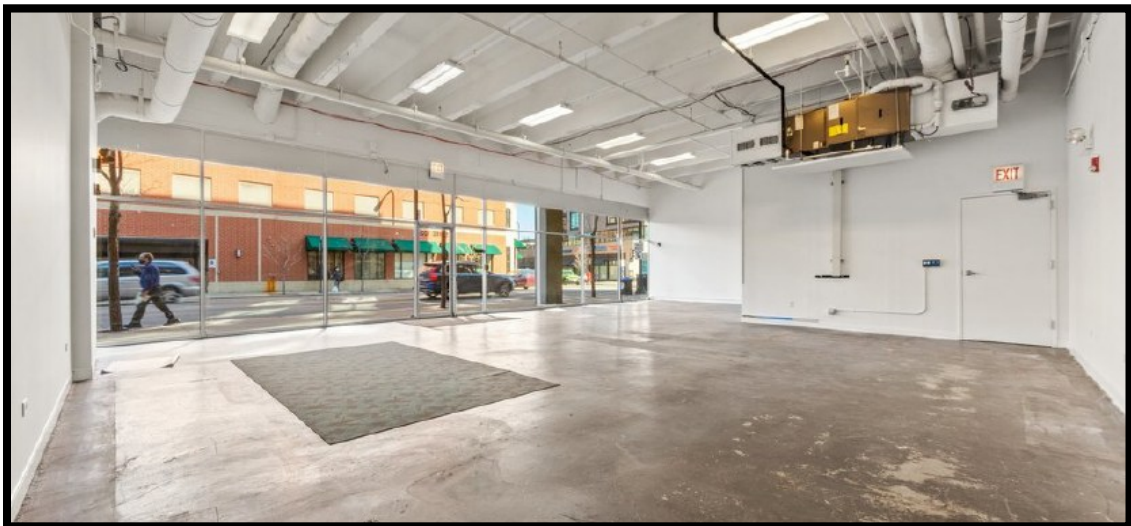
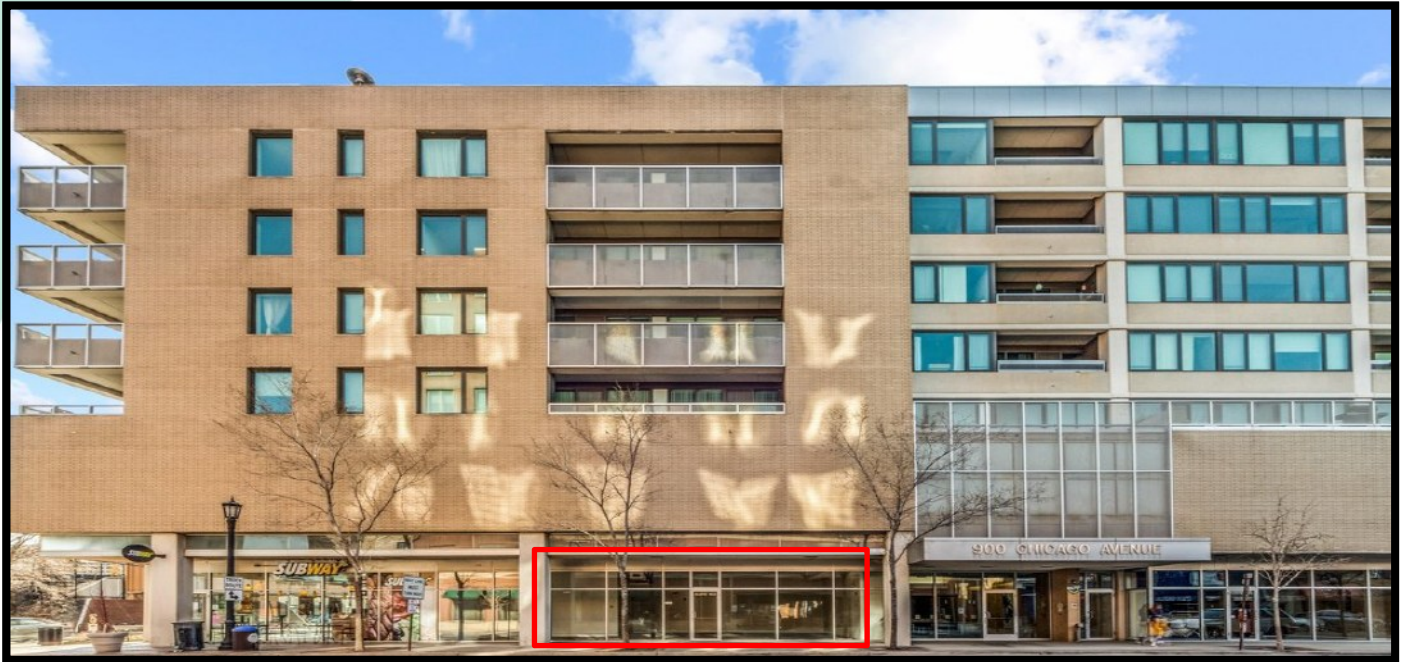
Location - Maps



Presented by:
Andis Dimants
Managing Broker
(866) 662-7638
adimants@rmxproperty.com

RealtyMetrix, LLC
155 North Wacker Drive
Suite 4250
Chicago, IL 60606



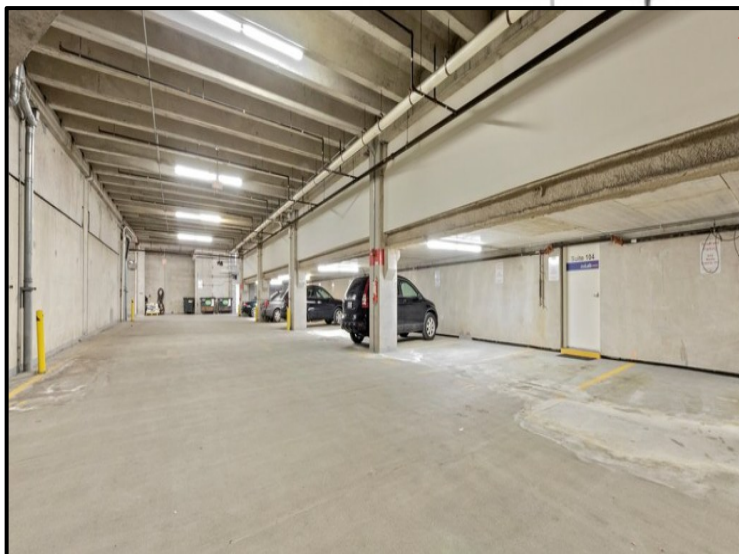


Floor Plans

SUITE 102
1,307 USF (1,369)
1,477 RSF

AVAILABLE

RESERVED PARKING AVAILABLE



Presented by:
Andis Dimants
Managing Broker
(866) 662-7638
adimants@rmxproperty.com

RealtyMetrix, LLC
155 North Wacker Drive
Suite 4250
Chicago, IL 60606

