

WAREHOUSE SPACE FOR LEASE

167 STEEL ROAD
CORDELE, GA 31015
CRISP COUNTY

±14,000 SF
±30 ACRES

LEASE RATE:
\$3,500/MO



BO ELLIOTT C: 478.718.2049
BELLIOTT@THESUMMITGROUPMACON.COM
4124 ARKWRIGHT ROAD, SUITE 1, MACON, GA 31210
O: 478.750.7507
WWW.THESUMMITGROUPMACON.COM



PROPERTY INFORMATION

- ±14,000 SF industrial warehouse situated on ±30 acres
- Featuring one (1) small office, two (2) restrooms, one (1) 10-ton bridge crane, one (1) dock high door, and two (2) drive-in doors
- Industrial zoning supports a variety of commercial and industrial users
- All utilities available to site
- Ample acreage for truck circulation and logistics activities
- Conveniently located just $\frac{3}{4}$ mile from I-75 Exit 104 for excellent regional access
- Located within an established industrial area surrounded by warehousing, transportation, agricultural, and manufacturing users

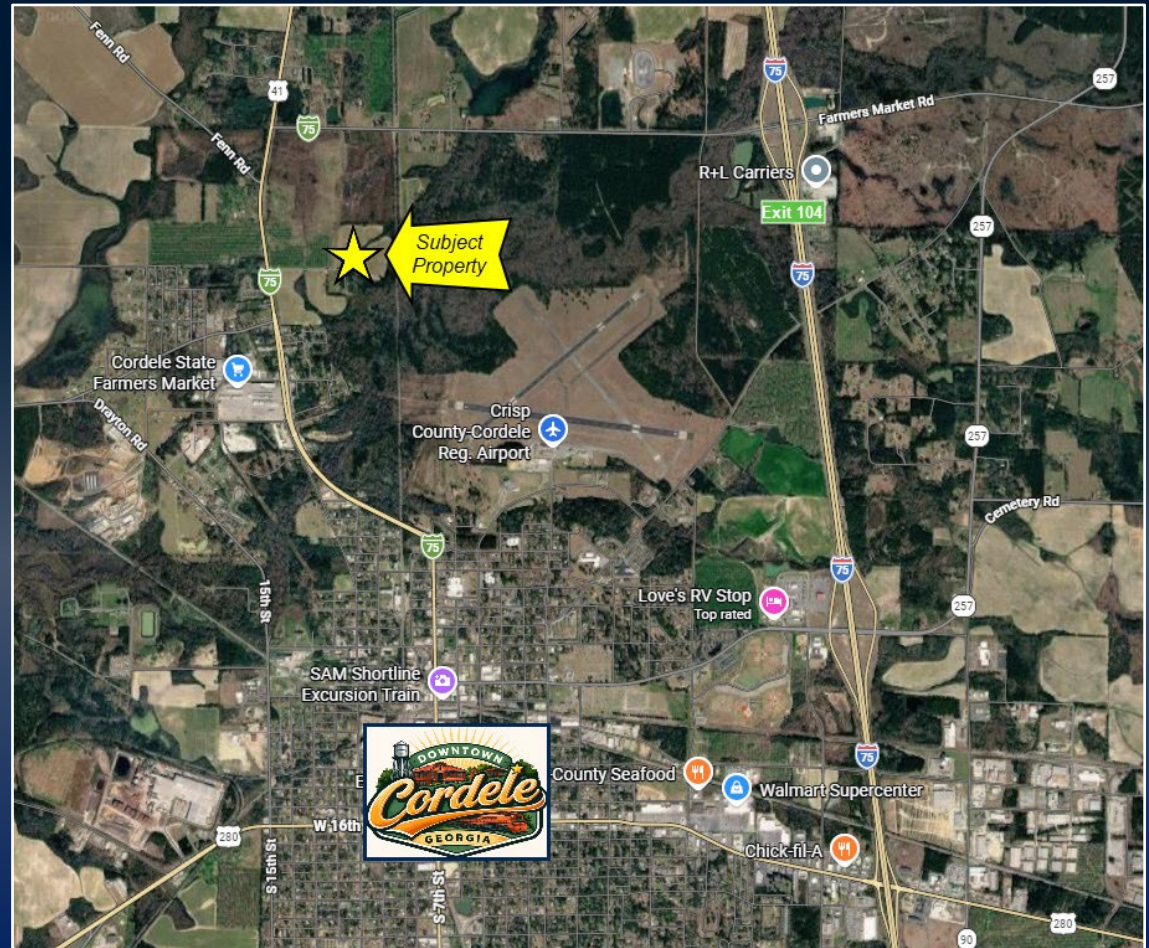


167 STEEL ROAD
CORDELE, GA 31015
CRISP COUNTY



AERIAL MAP & TRAFFIC COUNTS

Traffic Counts (GDOT 2024 Estimates)
Interstate 75 - 56,900 VPD
Highway 41 - 4,880 VPD



The information contained herein has been compiled from various sources, both private and public. It is accurate and complete only to the extent to which The Summit Group has been able to ascertain from third party sources. As such, no warranty or guarantee is given or implied with regard to the accuracy or completeness of any information contained herein. Any interested party shall be required to conduct its own due diligence and investigations to verify, review, audit, or otherwise insure the information contained herein.

