

SHOPPES OF RIVERWOODS

2001-2055 Milwaukee Ave, Riverwoods, IL



**Prime
Retail
Location**



**3 UNITS
AVAILABLE
FOR LEASE,
1 END CAP**

SHOPPES OF RIVERWOODS



Address

2001-2055 Milwaukee Ave,
Riverwoods, IL 60015

Features

- Great Visibility Near High Traffic Intersection
- Across from Woodman's Markets
- VPD: 30,600+ on Milwaukee Avenue
- Strong Demographics
- Surrounded by National Co-Tenants

Availability

3 Units, 1 End Cap
1,440 SF - 4,272 SF
Asking Rent: Negotiable
Taxes: \$3.96/SF
CAM: \$7.54/SF

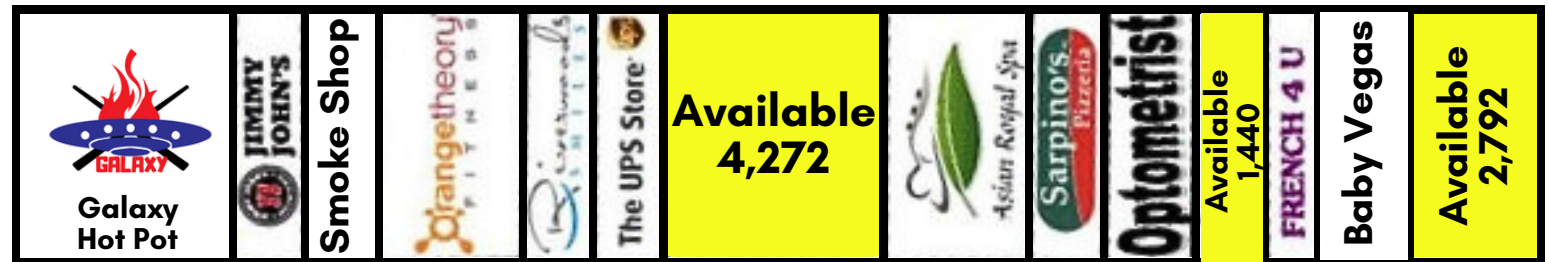
Demographics

	1 Mile	3 Miles	5 Miles
Population	6,927	75,758	206,649
Households	3,151	28,552	77,557
Avg Household Income	\$117,148	\$135,399	\$141,073
Daytime Population	7,844	75,450	154,039

SHOPPES OF RIVERWOODS



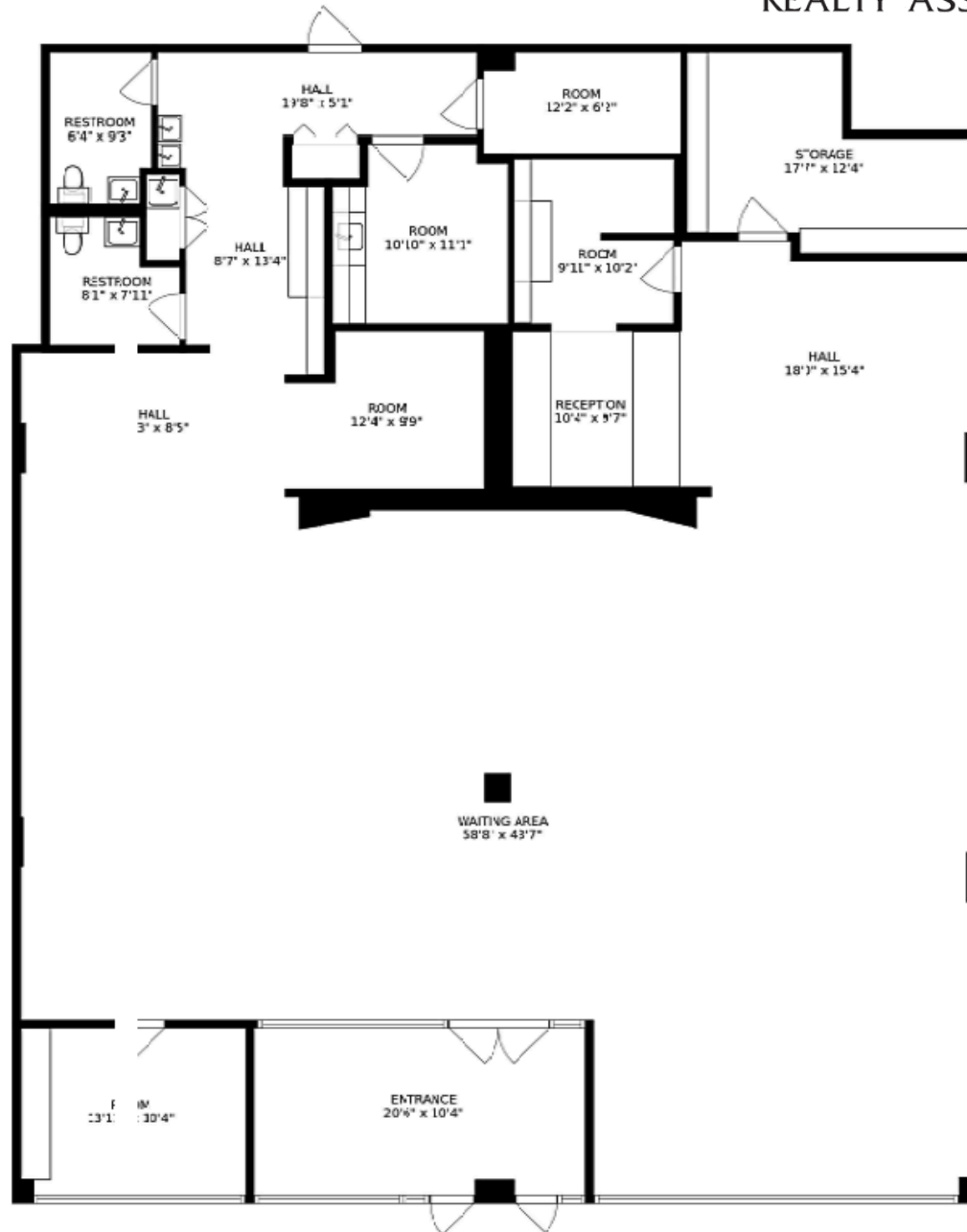
Suite	Tenant	SF
2001	Available	2,792
2005	Baby Vegas	Leased
2009	French 4U	Leased
2011	Available	1,440
2013	Focal Point	Leased
2017	Sarpinos	Leased
2021	Asian Royal Spa	Leased
2025	Available	4,272
2033	The UPS Store	Leased
2035	Riverwoods Smiles	Leased
2037	Orange Theory	Leased
2045	Smoke Shop	Leased
2047	Jimmy Johns	Leased
2049	King Shabu Shabu	Leased



SHOPPES OF RIVERWOODS



2025 Milwaukee Ave.
Available 4,272 SF



SHOPPES OF RIVERWOODS



Co-Tenants



Neighboring Tenants



SHOPPES OF RIVERWOODS

2001-2055 Milwaukee Ave, Riverwoods, IL

Joseph C. Santucci

Managing Broker

847-506-1000 ext. 5140

jcs@avalonreal.com



Carlo J. Santucci

Commercial Broker

847-506-1000 ext. 5140

carlo@avalonreal.com