

**FOR  
LEASE**

# 2917 N State Hwy 161

Grand Prairie, TX 75050



## PROPERTY HIGHLIGHTS

- Building: 56,709 SF
- 1st Floor Office: 10,899 SF
- 2nd Story Office: 9,386 SF
- Clear Height: 24'
- Dock High Doors: 11
- Grade Level Doors: 3
- Column Spacing: 44' x 42'
- Truck Court Depth: 110'
- Car Parks: 60
- Fully Secured Parking and Truck Court
- Sprinklered
- 3 HVLS fans

For more information, please contact:

**Luke Davis**  
ldavis@streamrealty.com  
817.637.2142

**Sam Harrell**  
sam.harrell@streamrealty.com  
214.305.6720

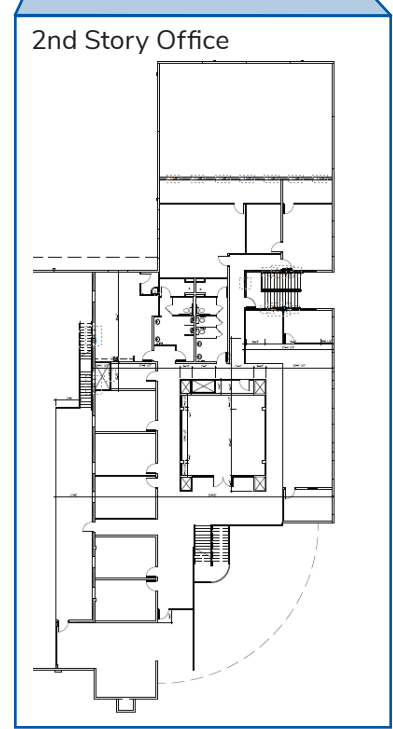
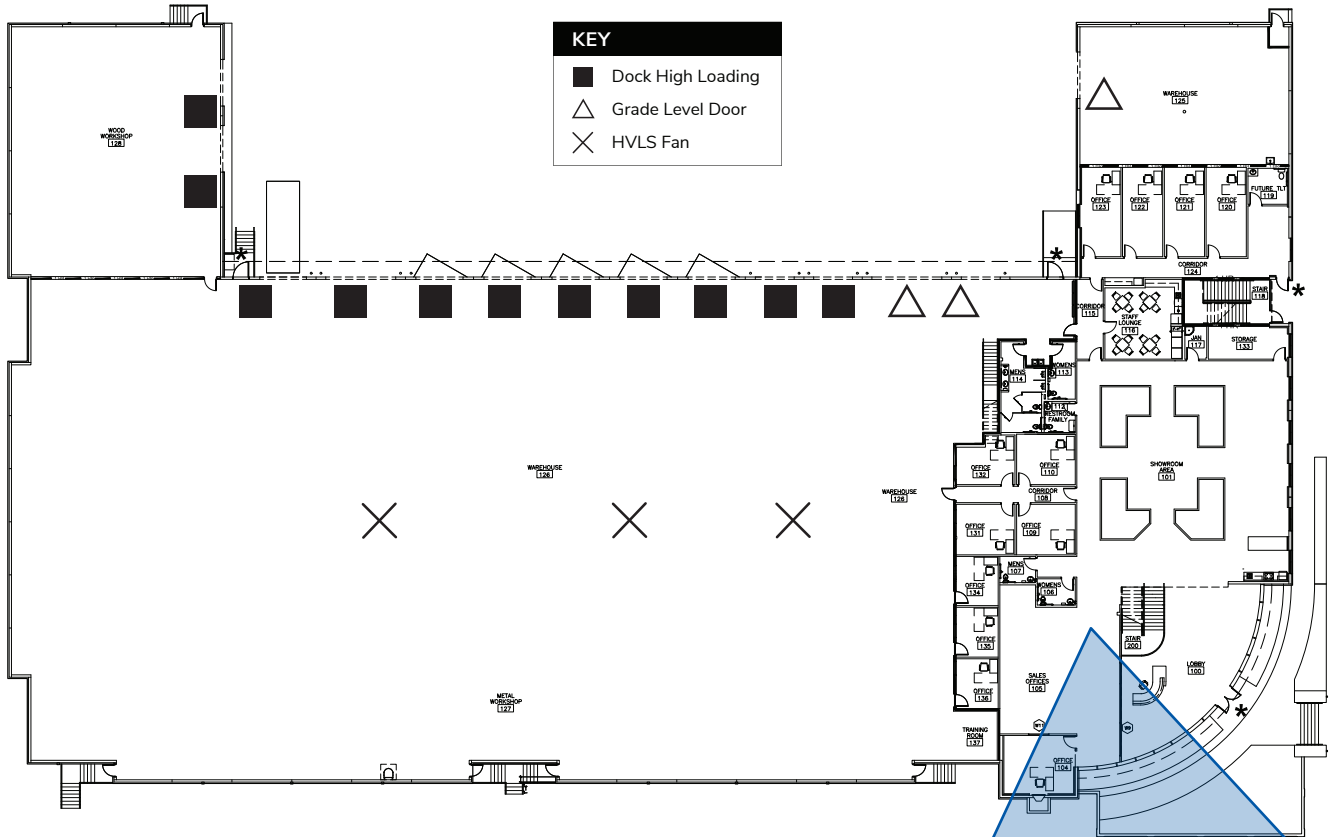
**Knox Wagoner**  
knox.wagoner@streamrealty.com  
214.210.1327

**STREAM**<sup>®</sup>

# 2917 N State Hwy 161

Grand Prairie, TX 75050

**FOR  
LEASE**



For more information, please contact:

**Luke Davis**  
ldavis@streamrealty.com  
817.637.2142

**Sam Harrell**  
sam.harrell@streamrealty.com  
214.305.6720

**Knox Wagoner**  
knox.wagoner@streamrealty.com  
214.210.1327

