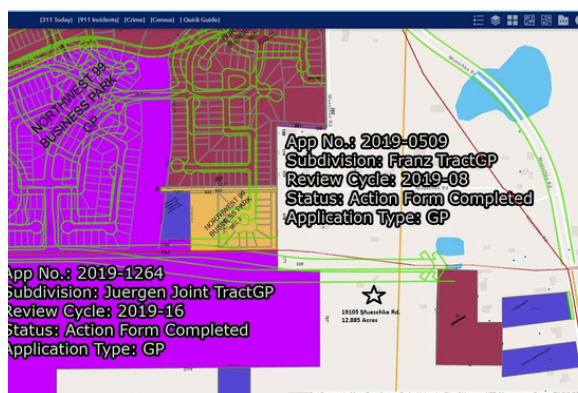


19105 Mueschke Road, Tomball, Texas, 77377



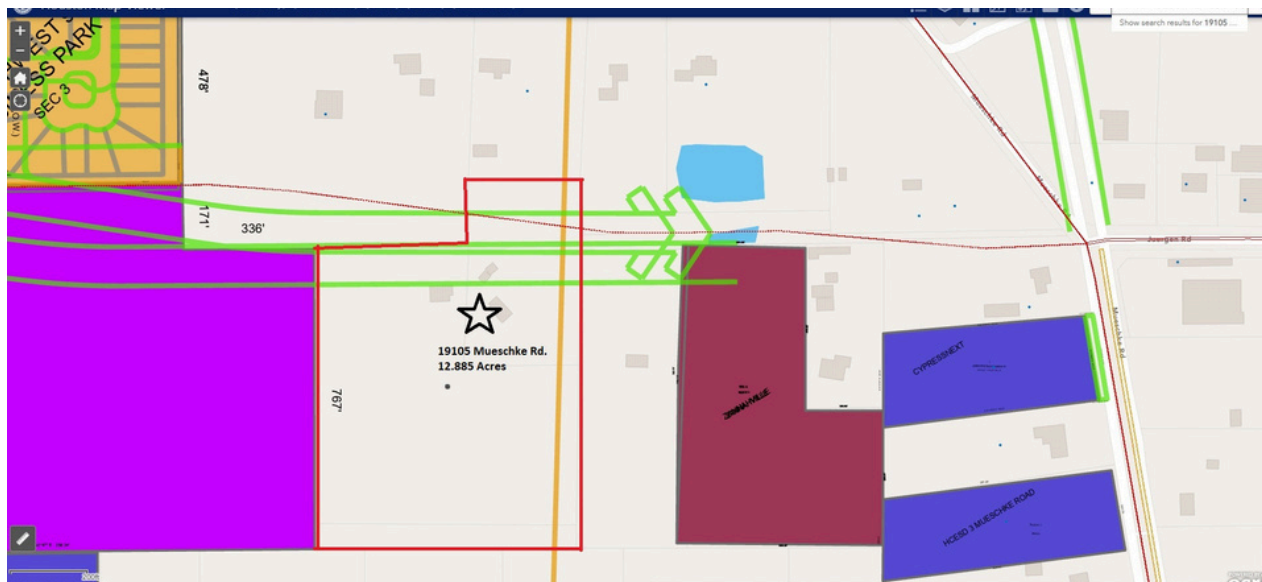
**+/- 12.885 ACRES**  
**UNRESTRICTED/ COMMERCIAL LAND**



Anita Salazar, Realtor®  
346-285-9323  
Anita.Salazar@remax.net

**RE/MAX**  
*Signature*

# 19105 Mueschke Road, Tomball, Texas, 77377



# 19105 Mueschke Road, Tomball, Texas, 77377

---

## Property Overview:

- **Address:** 19105 Mueschke Rd., Tomball, TX
- **Size:** ±12.885 Acres
- **Zoning:** *Unrestricted* – Ideal for:
  - Multifamily
  - Retail / Commercial
  - Gas Station
  - Mixed-Use Development
- **Future Frontage:** Direct access to the upcoming **Juergen Road thoroughfare** (Harris County-approved)
- **Utilities:**
  - Near **MUD 441** – Potential for annexation
  - Utility access is feasible due to nearby active developments
- **Topography:** High & dry – Ready for immediate development
- **Access:** Just minutes from FM 2920, with quick access to Hwy 99 (Grand Parkway), Hwy 290, and Hwy 249



# 19105 Mueschke Road, Tomball, Texas, 77377

---

## 🔥 Strategic Development Location:

- **Juergen Road Education Complex (Tomball ISD)**
  - 205-acre site with **Tomball West Elementary & Intermediate Schools**
  - Serves over **22,000+ students** – Located just 1.5 miles away
- **Northwest 99 Business Park (Clay Development)**
  - 172-acre site at Mueschke & Grand Parkway
  - Up to **2.3 million SF** of industrial/warehouse space under development
  - Major economic anchor for the region
- **Tomball ISD Event Center**
  - Modern **stadium and event venue** at 20235 Cypress Rosehill Rd.
  - Driving community activity and regional traffic

## 🎁 Explosive Growth & Demand Drivers:

- **Future H-E-B** planned at Cypress Rosehill & Grand Parkway
- **Established Retailers Nearby:**
  - Chick-fil-A
  - Whataburger
  - Starbucks under construction
- **Residential Growth:**
  - **Amira** by Land Tejas (Master-Planned Community)
  - **Redbud 40s** by Taylor Morrison

## ✅ Developer Takeaway:

- Unmatched location in one of NW Harris County's **fastest-growing corridors**
- High-visibility, future-access lot with **strong education, residential, and retail anchors nearby**
- A **rare opportunity** to build within a thriving economic and residential hub