

1450 Oakbrook Drive - Suite 400

Norcross, GA

Key Facts

Property type Industrial space

Building size 51,395 SF

Space available 9,933 SF



Contact Us

Learn more about this property or schedule a tour by reaching out to our local investment and leasing officer.

Gabriella Gianaccari

+1 (215) 531-0836

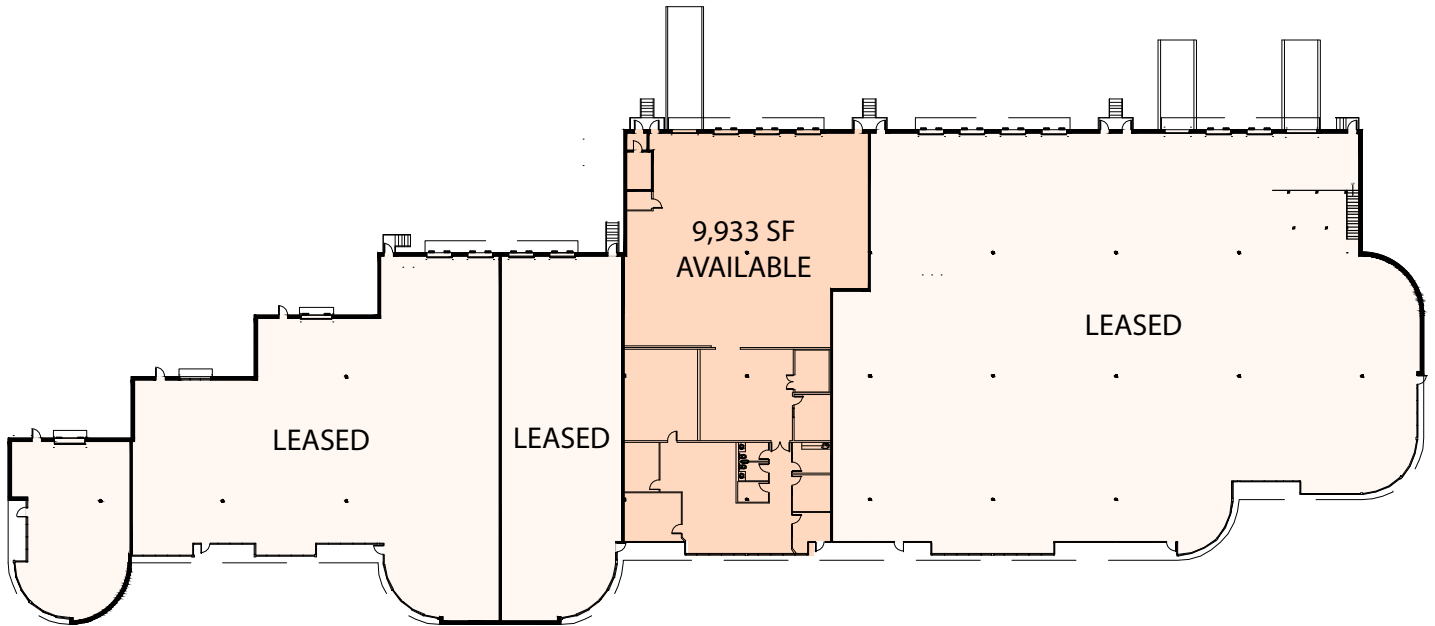
gabriella.gianaccari@eqtpartners.com

1450 Oakbrook Drive - Suite 400

Norcross, GA

BUILDING SPECIFICATIONS

Total Building Size: 51,395 SF
Available Space: 9,933 SF
Office Space: 3,555 SF
Dock Doors: 3
Drive-In Doors: 1
Clear Height Min: 16'-5"
Clear Height Max: 19'-11"



Contact Us

Learn more about this property or schedule a tour by reaching out to our local investment and leasing officer.

Gabriella Gianaccari

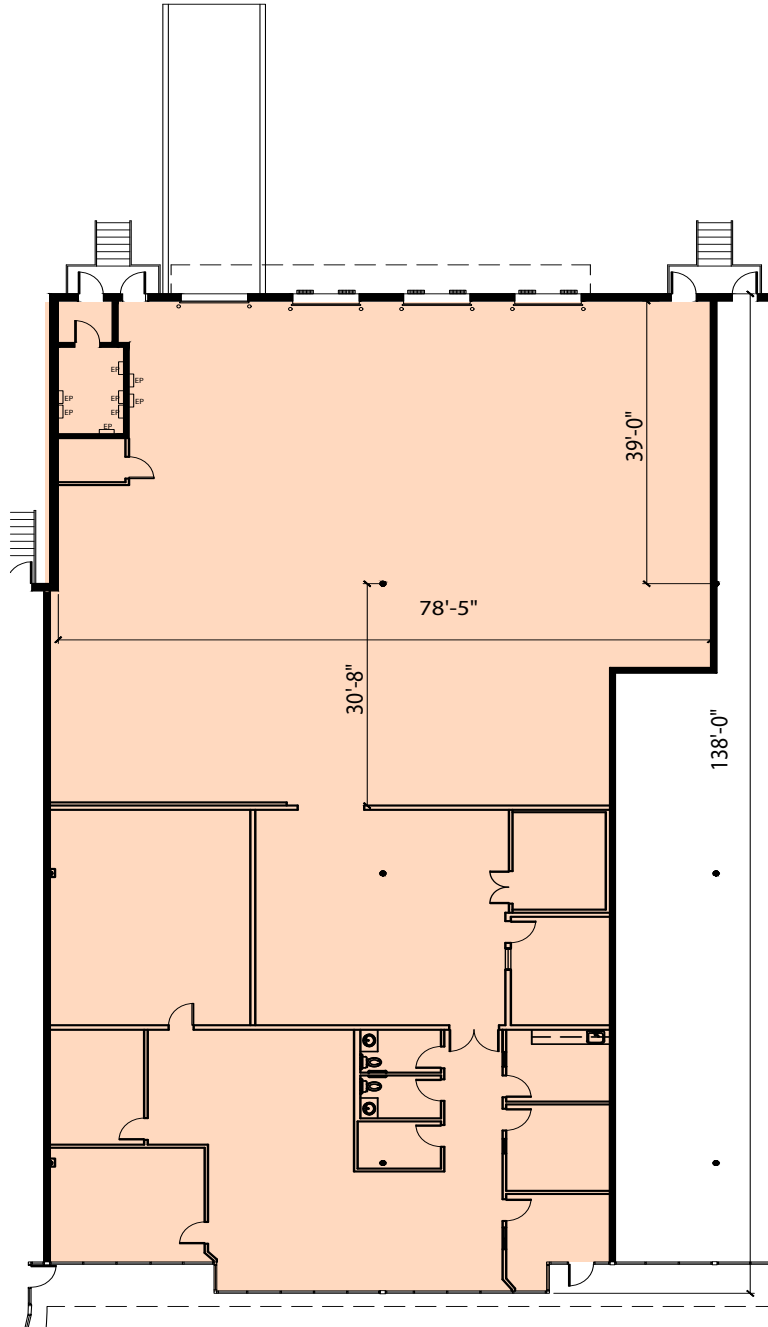
+1 (215) 531-0836

gabriella.giannaccari@eqtpartners.com

1450 Oakbrook Drive - Suite 400

Norcross, GA

FLOOR PLAN - 9,933 SF



Contact Us

Learn more about this property or schedule a tour by reaching out to our local investment and leasing officer.

Gabriella Gianaccari

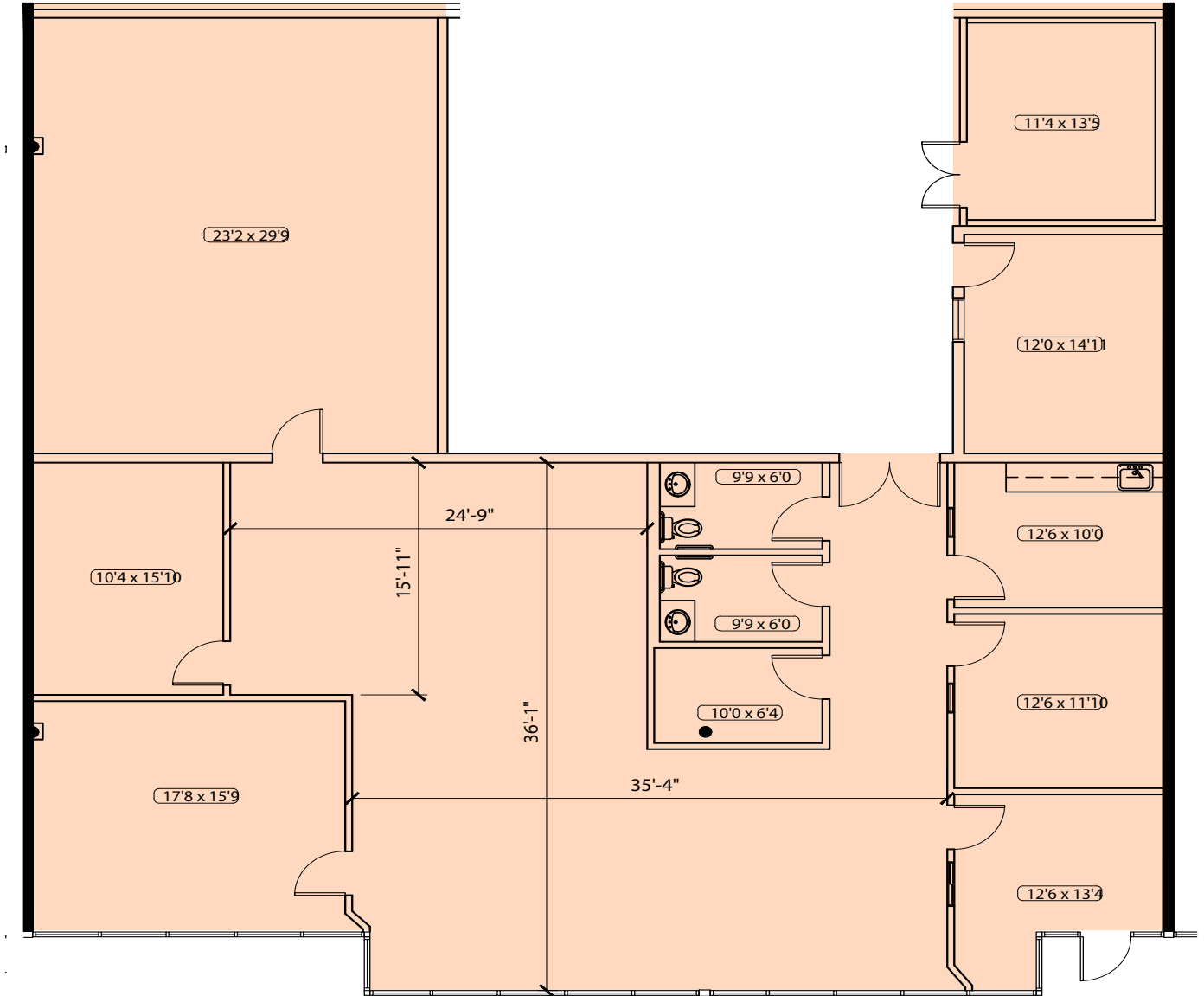
+1 (215) 531-0836

gabriella.gianaccari@eqtpartners.com

1450 Oakbrook Drive - Suite 400

Norcross, GA

OFFICE PLAN - 3,555 SF



Contact Us

Learn more about this property or schedule a tour by reaching out to our local investment and leasing officer.

Gabriella Gianaccari

+1 (215) 531-0836

gabriella.gianaccari@eqtpartners.com