

Office | For Lease



639 Fifth Avenue

639 5 Avenue SW
Calgary, AB



Flexible and Convenient

Recently renovated, Class B office building located in the west end of the downtown core

In house conference centre, fitness facility with showers and towel service available for exclusive tenant use, are just some of the key features available to tenants of the building. In addition, the building is Plus 15 connected to Fifth & Fifth, 715 5 Avenue SW, 700 6 Avenue SW and 640 5 Avenue SW. GOGI Korean Kitchen, Gentlemen's Choice barbershop and Canada Post are located on the main floor.

Committed to environmental sustainability, 639 5 Avenue SW is BOMA BEST Platinum certified.



Availability

Available Space

Suite 1550	1,051 square feet
Suite 1410	2,367 square feet
Suite 900	4,896 square feet
Suite 800	4,717 square feet
Suite 700	12,030 square feet
Suite 600	12,029 square feet
Suite 520	5,063 square feet
Suite 400	12,037 square feet

Availability

Immediate

Term

3 – 5 years

Parking

1 stall per 3,600 square feet

Net Rent

Market Rates

Allowance

Negotiable

2023 Op Costs & Taxes

\$15.58 per square foot

Building Details



Year Built

1970, renovated 2018

Building Class

B

Number of Floors

25

Average Floor Plate

12,000 square feet

Building Size

280,047 square feet

Property Manager

Equium Group

Building Amenities

- Fitness centre with shower and towel service
- Conference centre
- Daycare
- Bike storage and repair station
- Plus 15 connected
- GOGI Korean Kitchen, Gentlemen's Choice barbershop and Canada Post

Parking

- 1 stall per 3,600 sf, underground
- \$450.00 per month, per stall
- Month-to-month stalls available
- 6' parkade clearance

Elevators

- 5 high rise
- 4 low rise

HVAC

7:00 am to 6:00 pm, Monday to Friday

Security

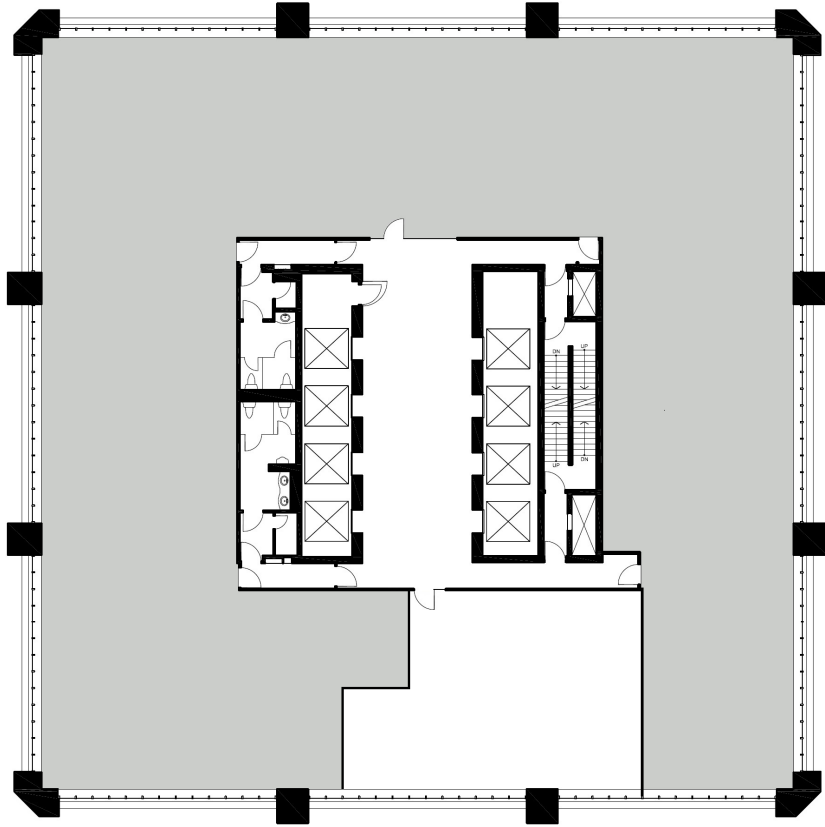
- 24-hour manned security
- Card access
- Video surveillance

Floor Plans

Suite 1550

1,051 SF

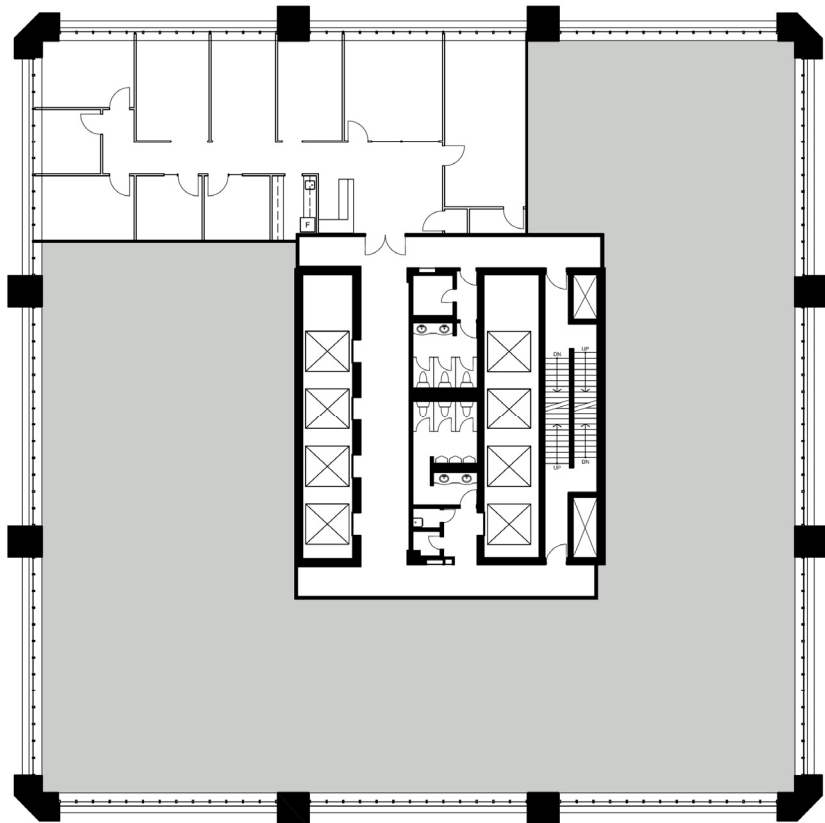
Currently undeveloped



Suite 1410

2,367 SF

- + 4 exterior offices
- + 2 interior offices
- + Meeting room
- + Kitchen
- + Reception

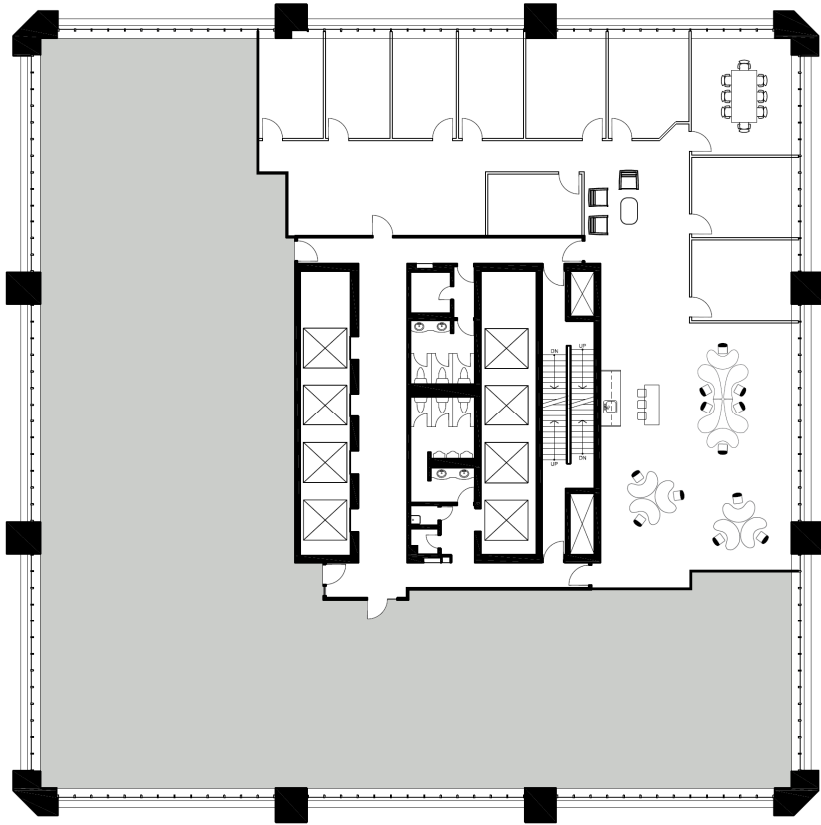


Floor Plans

Suite 900

4,896 SF

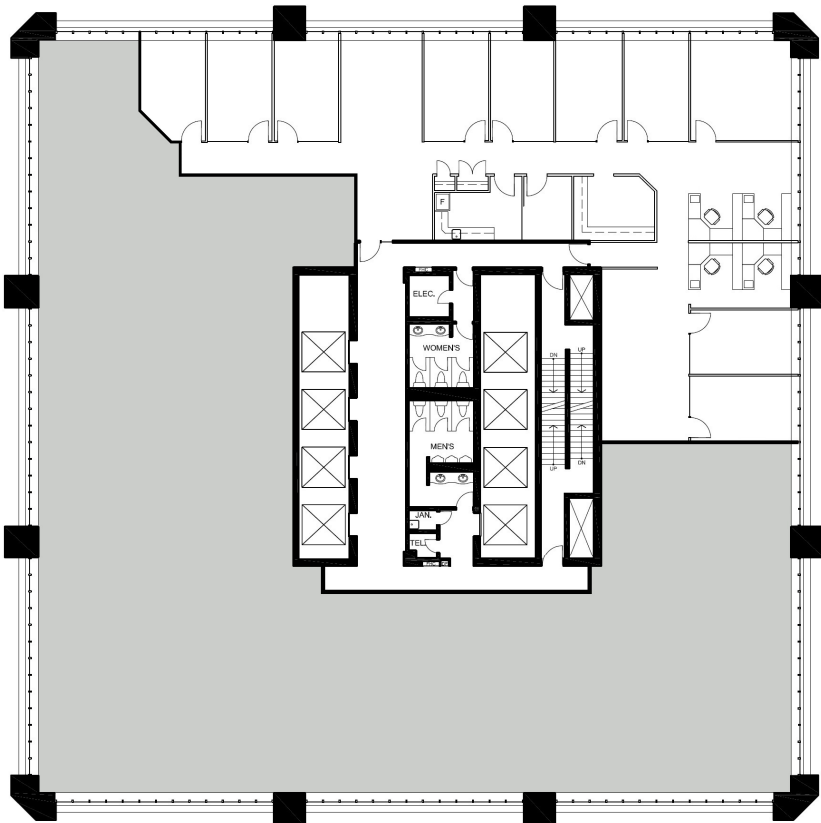
- + 8 exterior offices
- + Interior office
- + 12 workstations
- + Meeting room
- + Kitchen
- + Reception
- + Copy/filing area



Suite 800

4,717 SF

- + 10 exterior offices
- + 4 workstations
- + Kitchen
- + Reception
- + Server room
- + Filing room

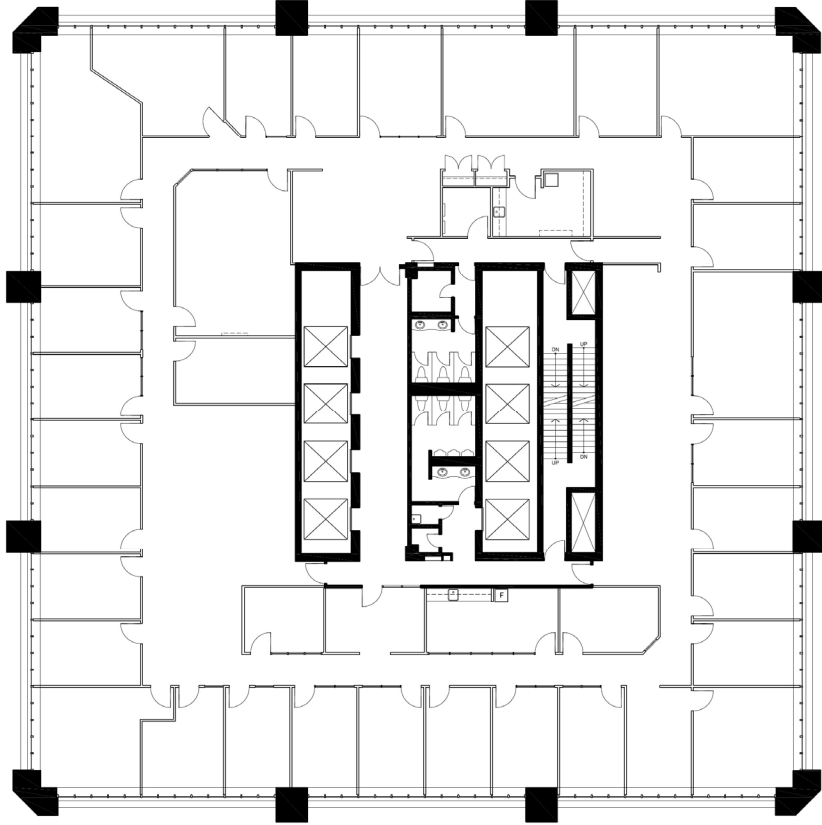


Floor Plans

Suite 700

12,030 SF

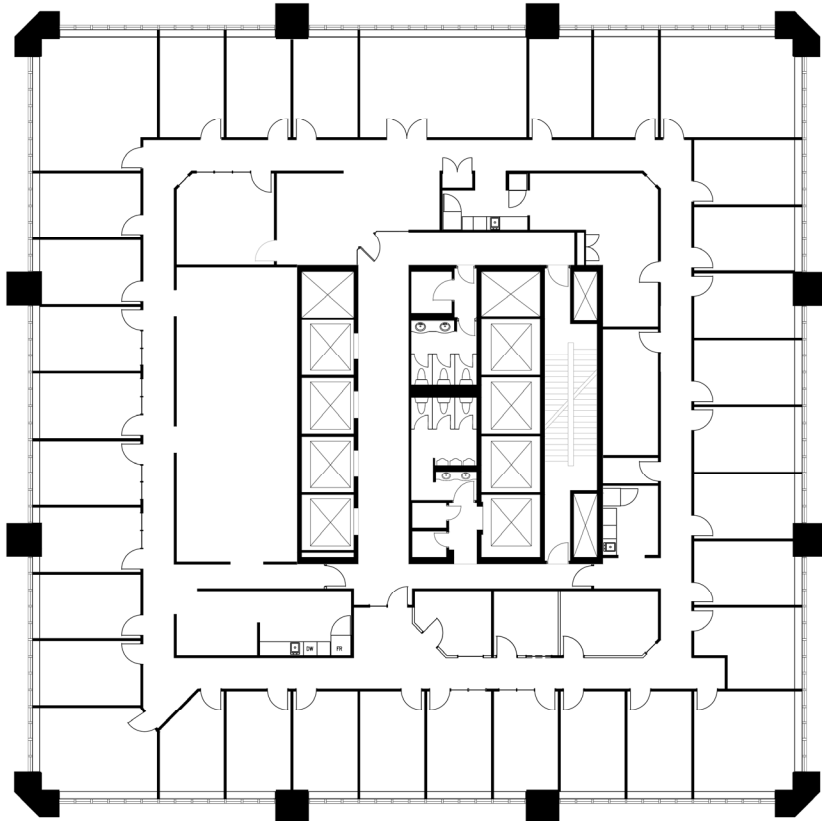
- + 31 exterior offices
- + 5 interior offices
- + Boardroom
- + Kitchen
- + Reception
- + Copy/filing areas
- + Storage



Suite 600

12,029 SF

- + 33 exterior offices
- + 3 interior offices
- + Boardroom
- + 2 meeting rooms
- + Kitchen
- + Coffee station
- + Reception
- + Server room
- + Copy/filing areas

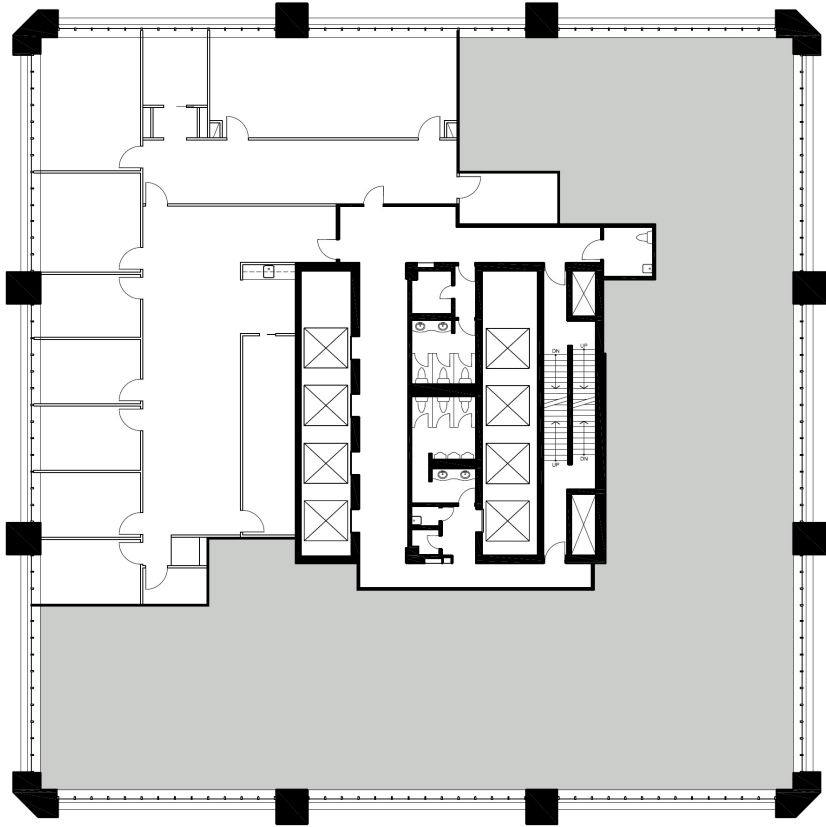


Floor Plans

Suite 520

5,063 SF

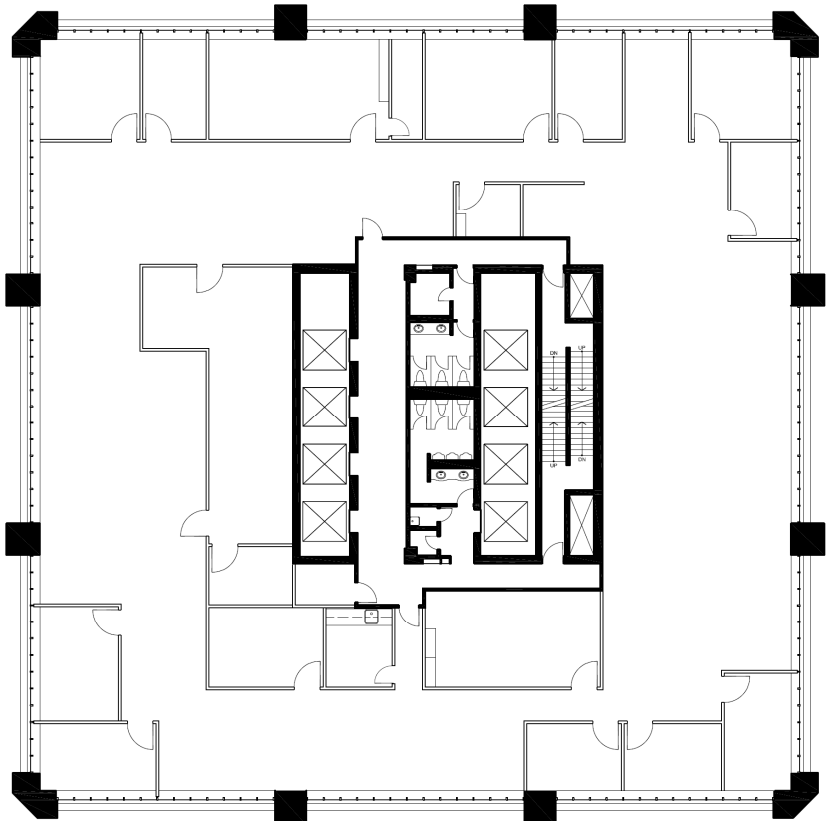
- + 7 exterior offices
- + 1 interior office
- + Large boardroom
- + Kitchen

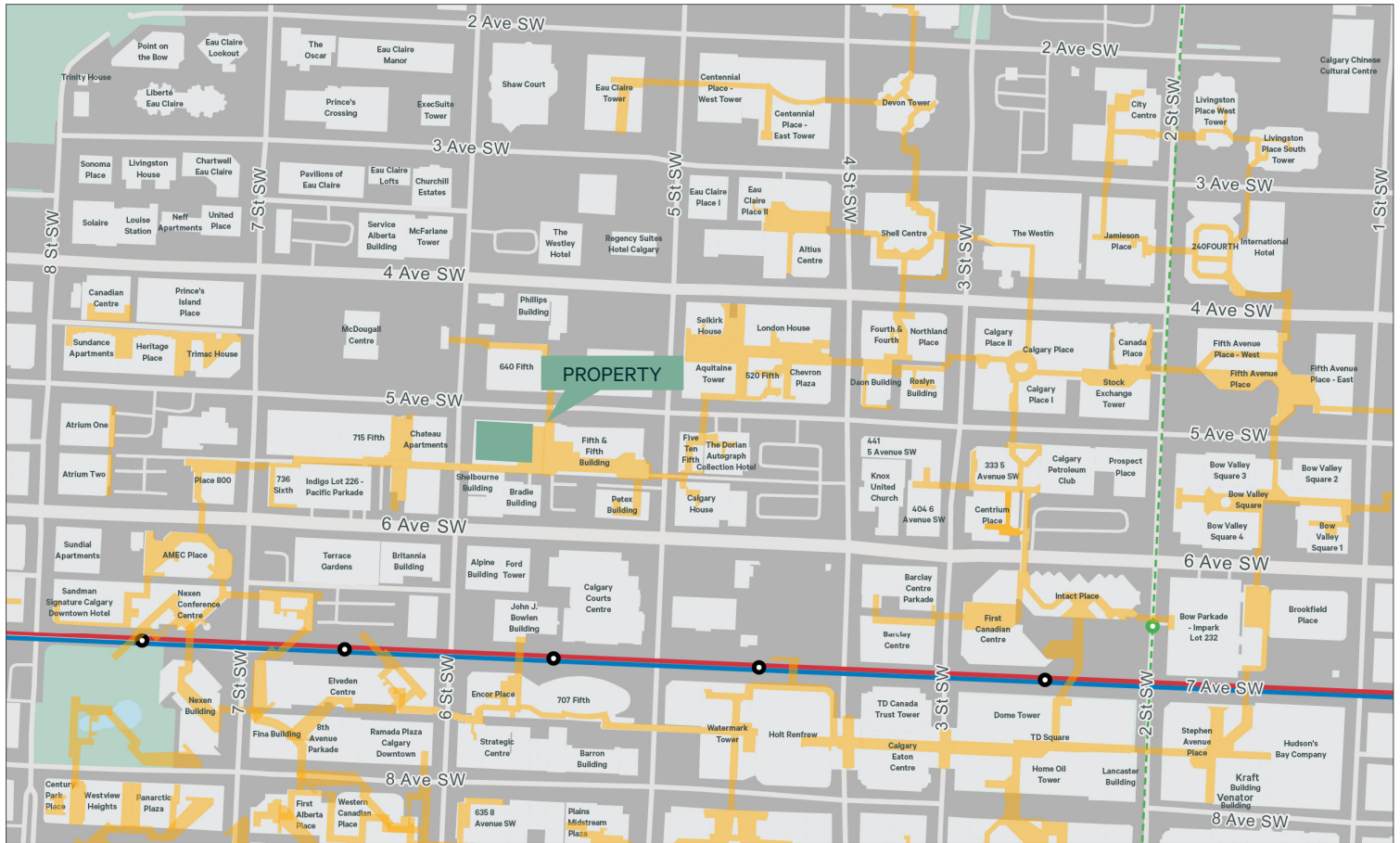


Suite 400

12,037 SF

- + 12 exterior offices
- + 2 interior offices
- + Open areas for workstations
- + 2 boardrooms
- + Kitchen





BUILDING & AREA AMENITIES

- + Plus 15 connected to Fifth & Fifth, 715 5 Avenue SW, 700 6 Avenue SW and 640 5 Avenue SW
- + Fitness facility and conference centre available for exclusive tenant use
- + GOGI Korean BBQ, Gentlemen's Choice Barber Shop and Canada Post located on the main floor; daycare located on the Plus 15 level
- + Heated, underground parking with secure bike storage and repair station
- + Convenient access to bus routes and the LRT
- + Abundant amenities in the immediate area including restaurants, shopping and services

Contact Us

Scott McCulloch
Senior Vice President
+1 403 750 0539
scott.mcculloch@cbre.com

CBRE Limited
3200 525 8 Avenue SW
Calgary, AB T2P 1G1
www.cbre.ca

This disclaimer shall apply to CBRE Limited, Real Estate Brokerage, and to all other divisions of the Corporation; to include all employees and independent contractors ("CBRE"). The information set out herein, including, without limitation, any projections, images, opinions, assumptions and estimates obtained from third parties (the "Information") has not been verified by CBRE, and CBRE does not represent, warrant or guarantee the accuracy, correctness and completeness of the Information. CBRE does not accept or assume any responsibility or liability, direct or consequential, for the Information or the recipient's reliance upon the Information. The recipient of the Information should take such steps as the recipient may deem necessary to verify the Information prior to placing any reliance upon the Information. The Information may change and any property described in the Information may be withdrawn from the market at any time without notice or obligation to the recipient from CBRE. CBRE and the CBRE logo are the service marks of CBRE Limited and/or its affiliated or related companies in other countries. All other marks displayed on this document are the property of their respective owners. All Rights Reserved. Mapping Sources: Canadian Mapping Services canadamapping@cbre.com; DMTI Spatial, Envrionics Analytics, Microsoft Bing, Google Earth.