

5720 SHATTUCK AVE. • OAKLAND, CA

Tom Southern
510.220.6336
tom@chromataRE.com
DRE #01808807

Small Office Suites Available | Amenity Rich Building

CHROMATA



ADDRESS 5720 Shattuck Avenue, Oakland, CA

West Mezzanine | 875 SF - \$3,000 per month FS

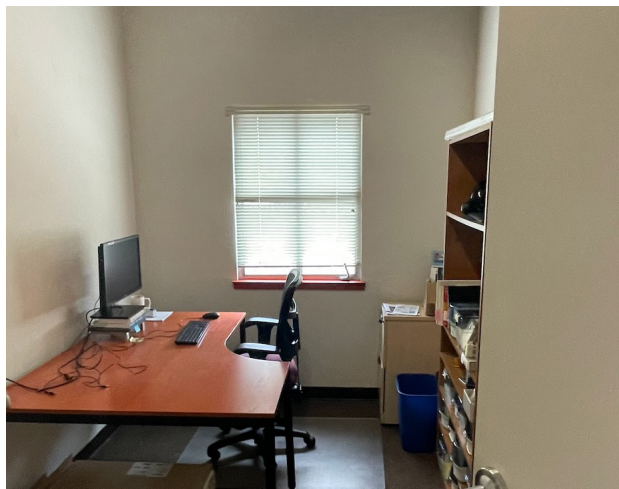
East Mezzanine | 719 SF - \$2,500 per month FS

PROPERTY HIGHLIGHTS

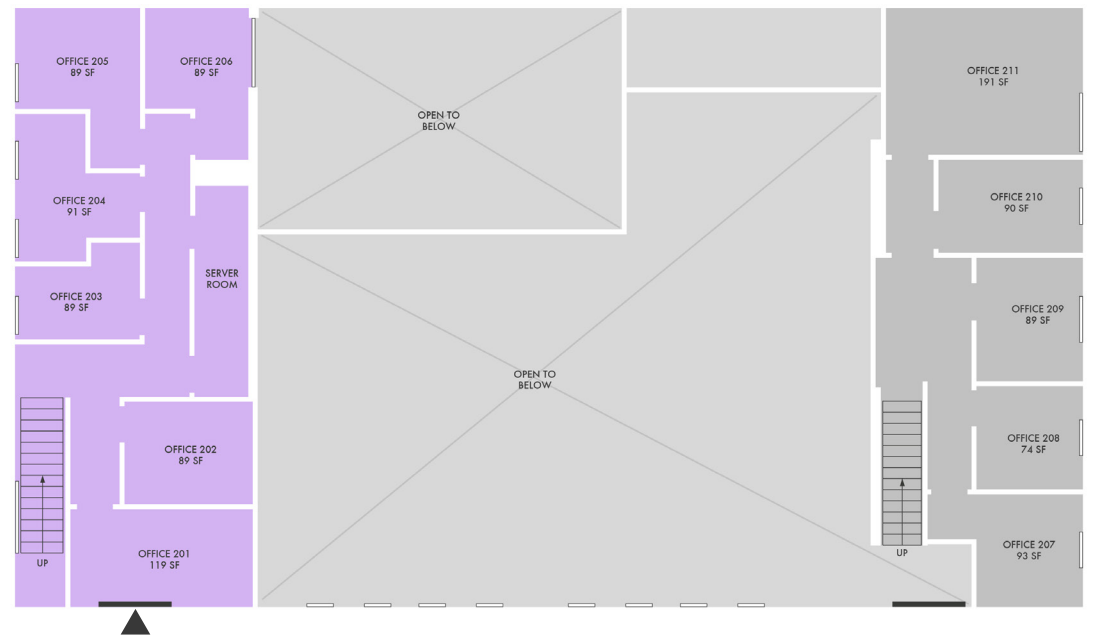
- Fully Serviced Office Suites - Clean and Well Lit
- 24-Hour Access
- Generous Parking Included
- Large Conference Room/AV Equipped
- Large Kitchen/Breakroom
- Outdoor Patio Area
- Bike Parking
- Gated and Fenced Parking Lot
- Near Oakland's Temescal District
- Suites Offered on a Sublease Basis



WEST MEZZANINE 875 SF

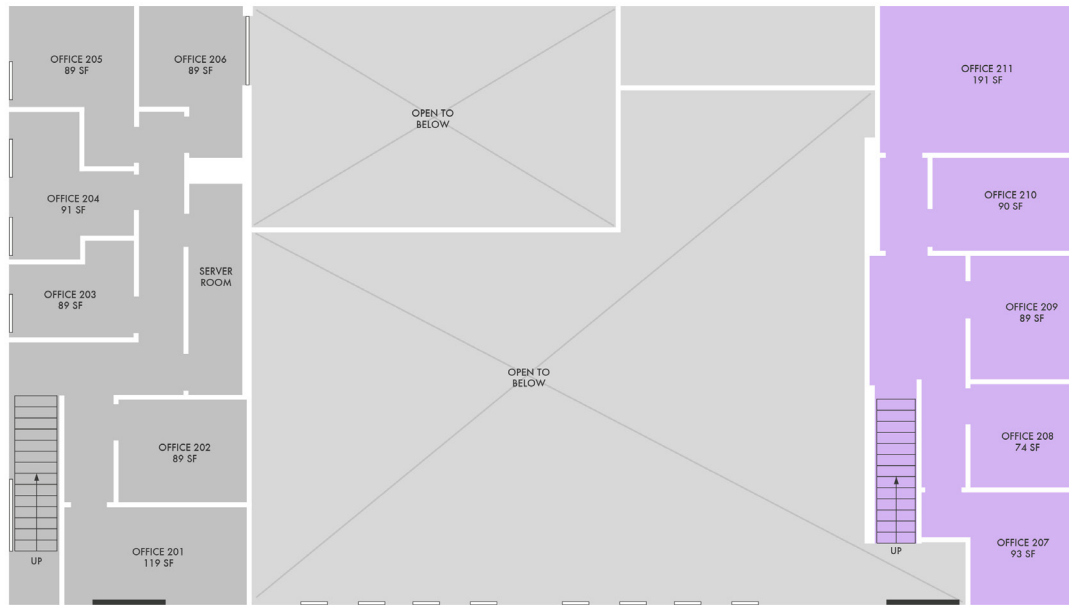


SHATTUCK AVE.



▶ ENTRANCE

SHATTUCK AVE.



▶ ENTRANCE

EAST MEZZANINE 719 SF



SHARED BUILDING AMENITIES





Tom Southern
510.220.6336
tom@chromataRE.com
DRE 01808807

CHROMATA