

OFFICE SPACE AVAILABLE NOW FOR LEASE



CUSHMAN &
WAKEFIELD

COMMERCIAL
OKLAHOMA

ALLIED
ARTS

COFFEE SLINGERS

ADDITIONAL PARKING IN THE BACK
Located in Oklahoma City's historic Automobile Alley, this property is situated on NW 10th & Broadway. Convenient access to Downtown Central Business District and the Bricktown Entertainment District, easy access to I-235. Automobile Alley is rapidly becoming a desirable place to live work and play.

**AUTO
ALLEY**

2ND FLOOR

**1015 N BROADWAY AVENUE
OKLAHOMA CITY, OK 73102**

1015 N BROADWAY AVENUE OKLAHOMA CITY, OK 73102

2ND FLOOR FLOORPLAN

BUILDING SIZE: ± 31,137 SF

SUBMARKET: Automobile Alley

USE: Office

PARKING: Free Surface

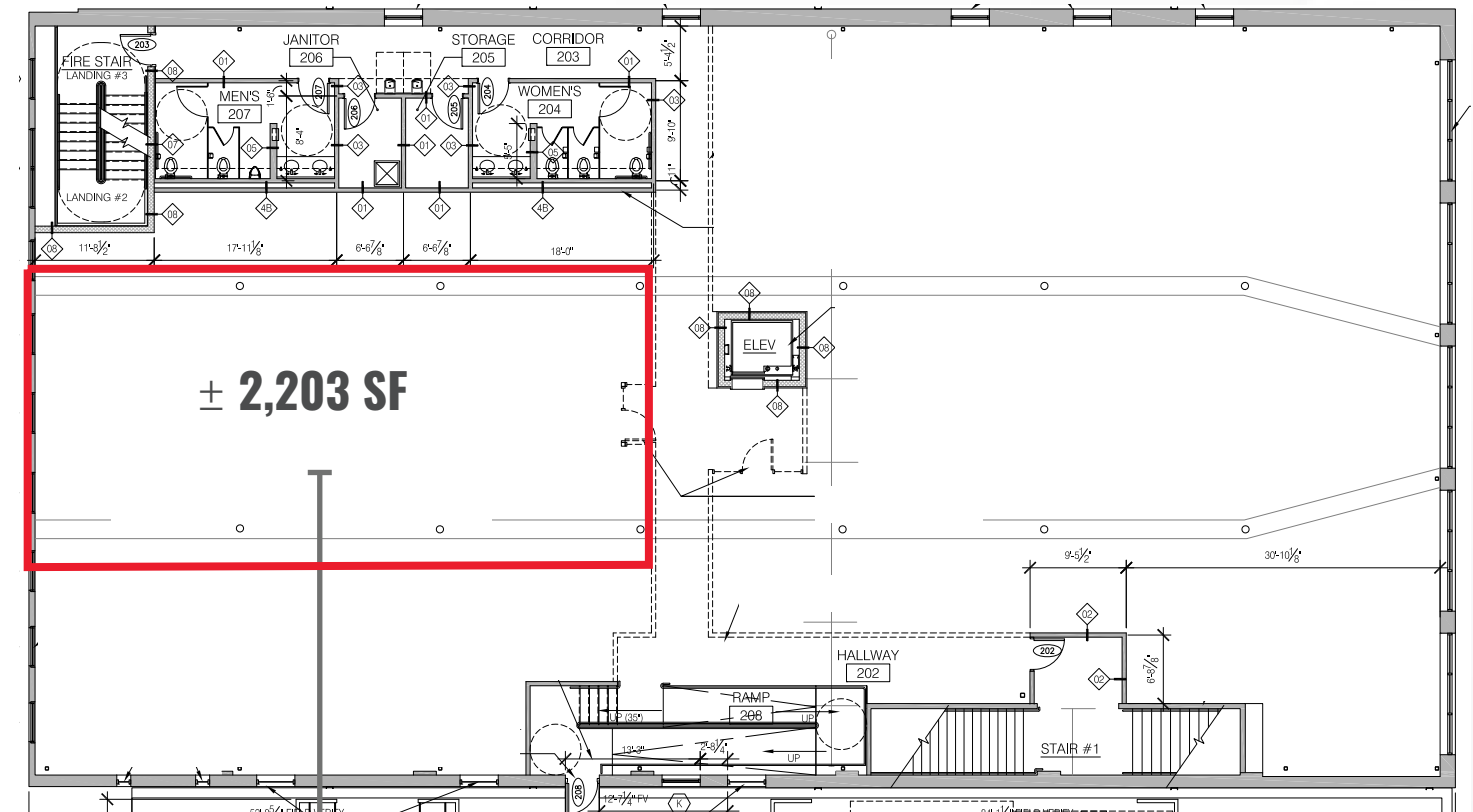
AVAILABLE SPACE

2ND FLOOR: ± 2,203 SF

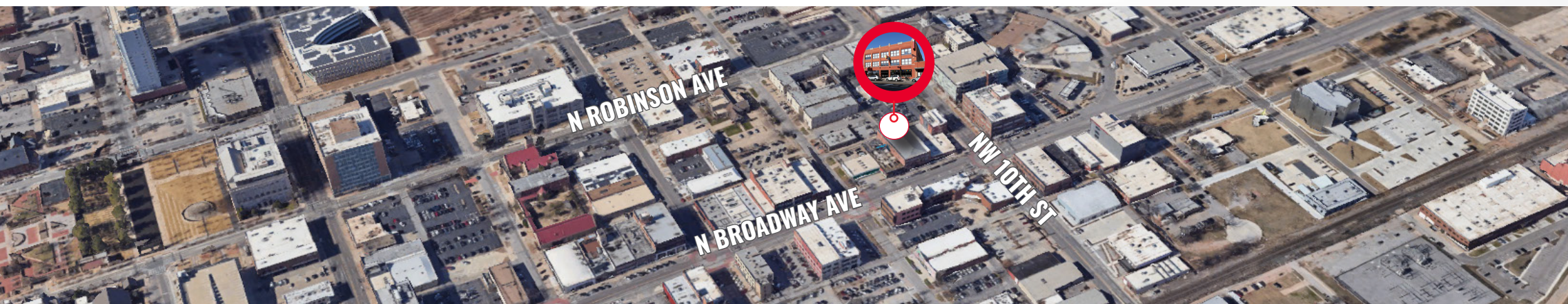
LEASE RATE:

\$22.00 FSG

BUILDING PHOTOS



Potential
Build-out
Option



1015 N BROADWAY AVENUE
OKLAHOMA CITY, OK 73102



**COMMERCIAL
OKLAHOMA**



**CONTACT
US**

VIVIENNE VOGLER

+1 405 570 8595

vvogler@commercialoklahoma.com

MICAH SHERMAN, CCIM

+1 405 488 5548

msherman@commercialoklahoma.com

TRAVIS MASON

+1 405 249 0655

tmason@commercialoklahoma.com

**OKLAHOMA
CITY**

204 N Robinson Ave, Suite 2000, Oklahoma City, OK 73102

+1 405 563 5000

commercialoklahoma.com

©2026 Cushman & Wakefield | Commercial Oklahoma. Independently Owned and Operated / A Member of the Cushman & Wakefield Alliance. All rights reserved. The information contained in this communication is strictly confidential. This information has been obtained from sources believed to be reliable but has not been verified. No warranty or representation, express or implied, is made as to the condition of the property (or properties) referenced herein or as to the accuracy or completeness of the information contained herein, and same is submitted subject to errors, omissions, change of price, rental or other conditions, withdrawal without notice, and to any special listing conditions imposed by the property owner(s). Any projections, opinions or estimates are subject to uncertainty and do not signify current or future property performance.