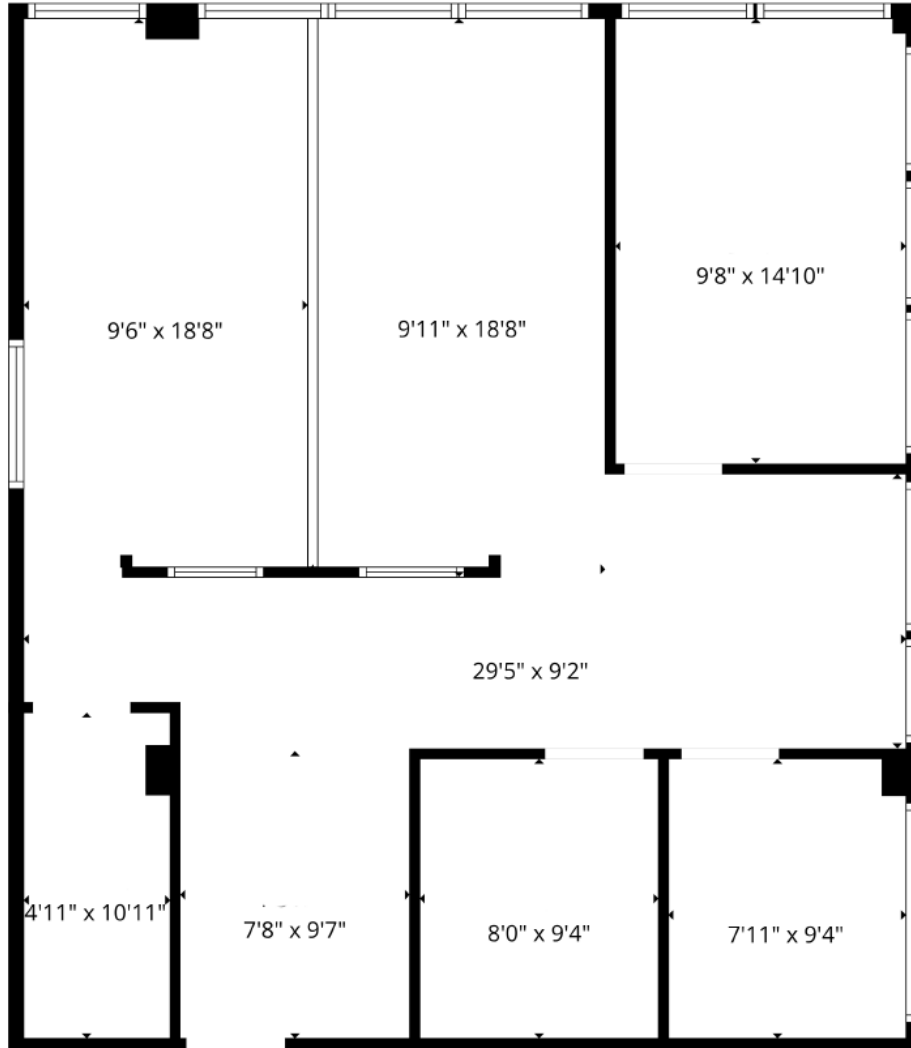


SUITE 111 | 1,239 SF

1952 McDowell Rd \ Naperville, IL



SPACE NOTES

- Corner unit with wrap around windows
- Two private offices
- Conference Room
- Open area for workstations
- Large closet
- Entry foyer
- Glass entry door



RYAN MOEN, SIOR
630.480.6346
RMoen@VersaRES.com

ANGELA WING
630.481.6792
AWing@VersaRES.com

1 MID AMERICA PLAZA, 3RD FLOOR
OAKBROOK TERRACE, IL 60181
630.480.6413

EXCLUSIVELY LISTED BY
VERSA
REAL ESTATE SERVICES