



168 Patton

168 Patton Ave, Asheville, NC 28801



Stoner Giltz

Tessier Group

33 Patton Ave, Suite 201, Asheville, NC 28801

stoner@tessiergroup.com

(828) 338-9240



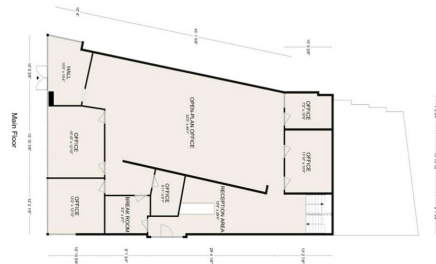
168 Patton

\$24.00 /SF/YR

This two-story building is an ideal location for traditional offices. Zoned CBD. Located at the gateway to downtown Asheville on a hard, lighted corner, and very high visibility. Open floor plan and individual offices. Directly adjacent to the Federal Building makes this an excellent location for a law office....

- High walkability
- Open floor plan and individual offices
- Hard corner, lighted intersection

Measurements are provided in accordance with NCEM Standards Square Footage Guidelines using their measuring tools and methods. All dimensions are approximate. Please contact the listing agent for more information. H.A. Report | shindleradvisors.com



Measurements are provided in accordance with NCEM Standards Square Footage Guidelines using their measuring tools and methods. All dimensions are approximate. Please contact the listing agent for more information. H.A. Report | shindleradvisors.com

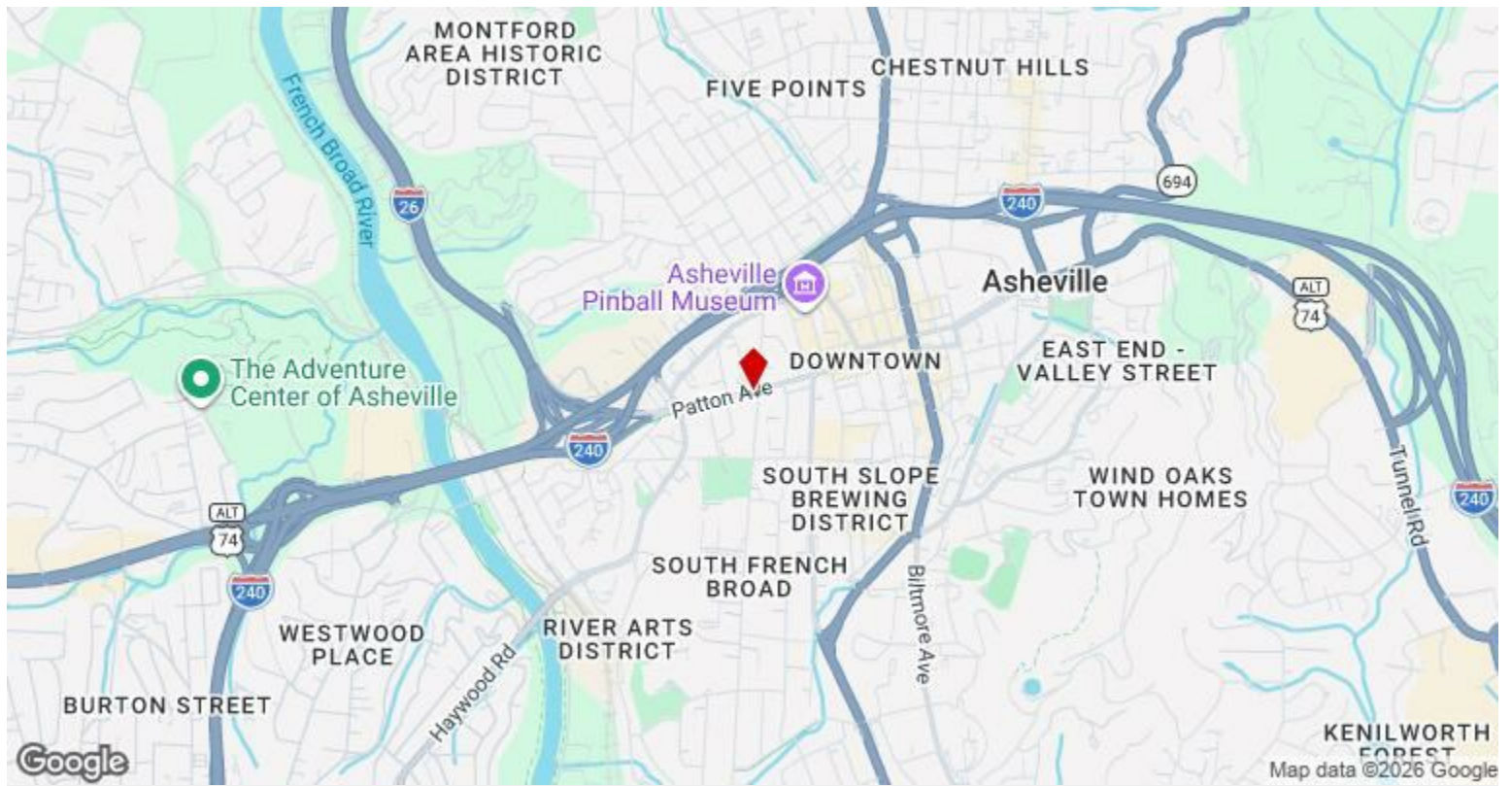


Rental Rate:	\$24.00 /SF/YR
Property Type:	Office
Property Subtype:	Loft/Creative Space
Building Class:	B
Rentable Building Area:	5,458 SF
Year Built:	1961
Walk Score ®:	60 (Moderately friendly)
Transit Score ®:	50 (Fairly friendly)
Rental Rate Mo:	\$2.00 /SF/MO

1st Floor

Space Available	5,458 SF
Rental Rate	\$24.00 /SF/YR
Date Available	Now
Service Type	Triple Net (NNN)
Built Out As	Standard Office
Space Type	Relet
Space Use	Office
Lease Term	Negotiable

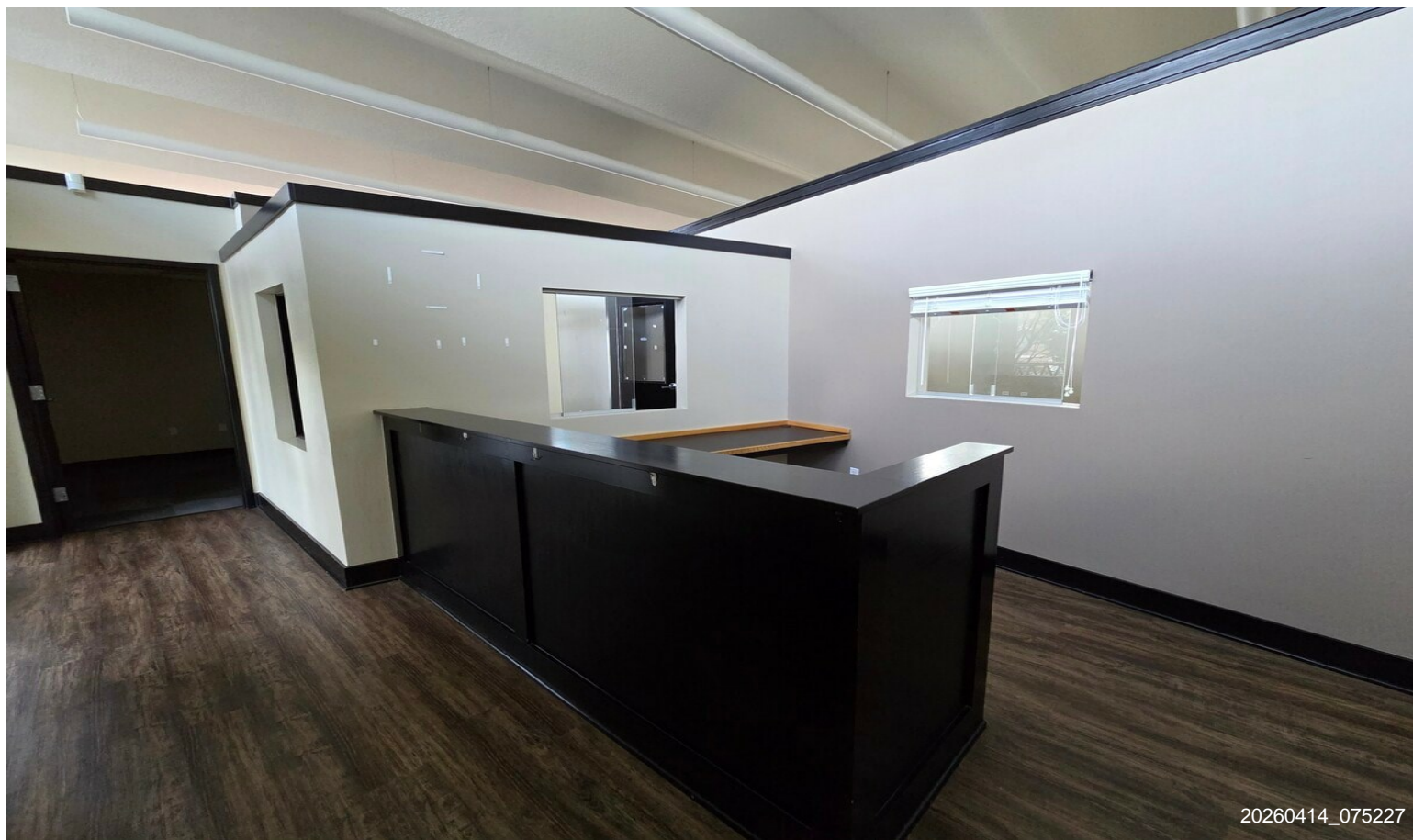
This two-story building is an ideal location for traditional offices. Zoned CBD. Located at the gateway to downtown Asheville on a hard, lighted corner, and very high visibility. Open floor plan and individual offices. Directly adjacent to the Federal Building makes this an excellent location for a law office.



168 Patton Ave, Asheville, NC 28801

This two-story building is an ideal location for traditional offices. Zoned CBD. Located at the gateway to downtown Asheville on a hard, lighted corner, and very high visibility. Open floor plan and individual offices. Directly adjacent to the Federal Building makes this an excellent location for a law office.

Property Photos



20260414_075227



20260414_075055

Property Photos

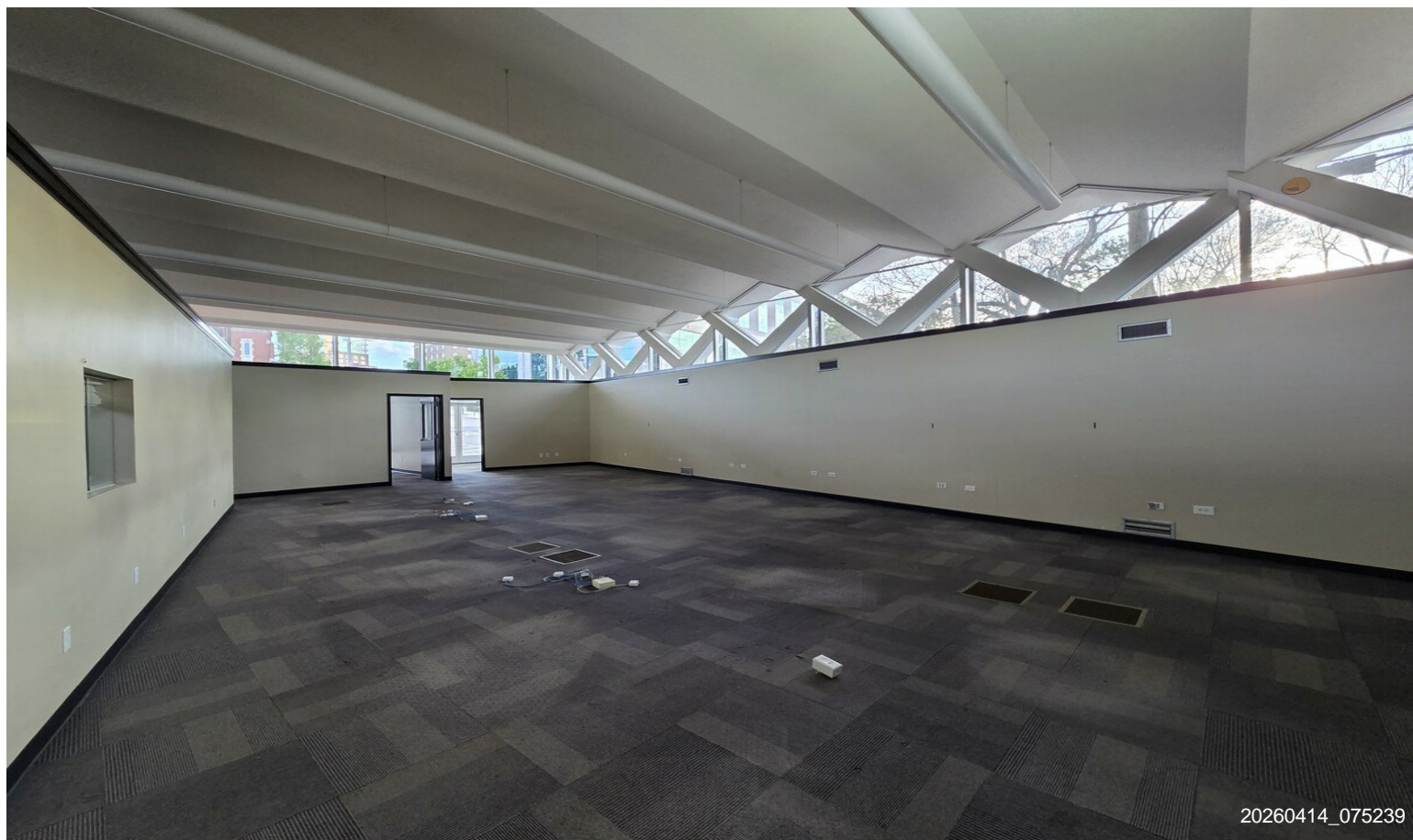


20260414_075121



20260414_075142

Property Photos



20260414_075239



20260414_074044