

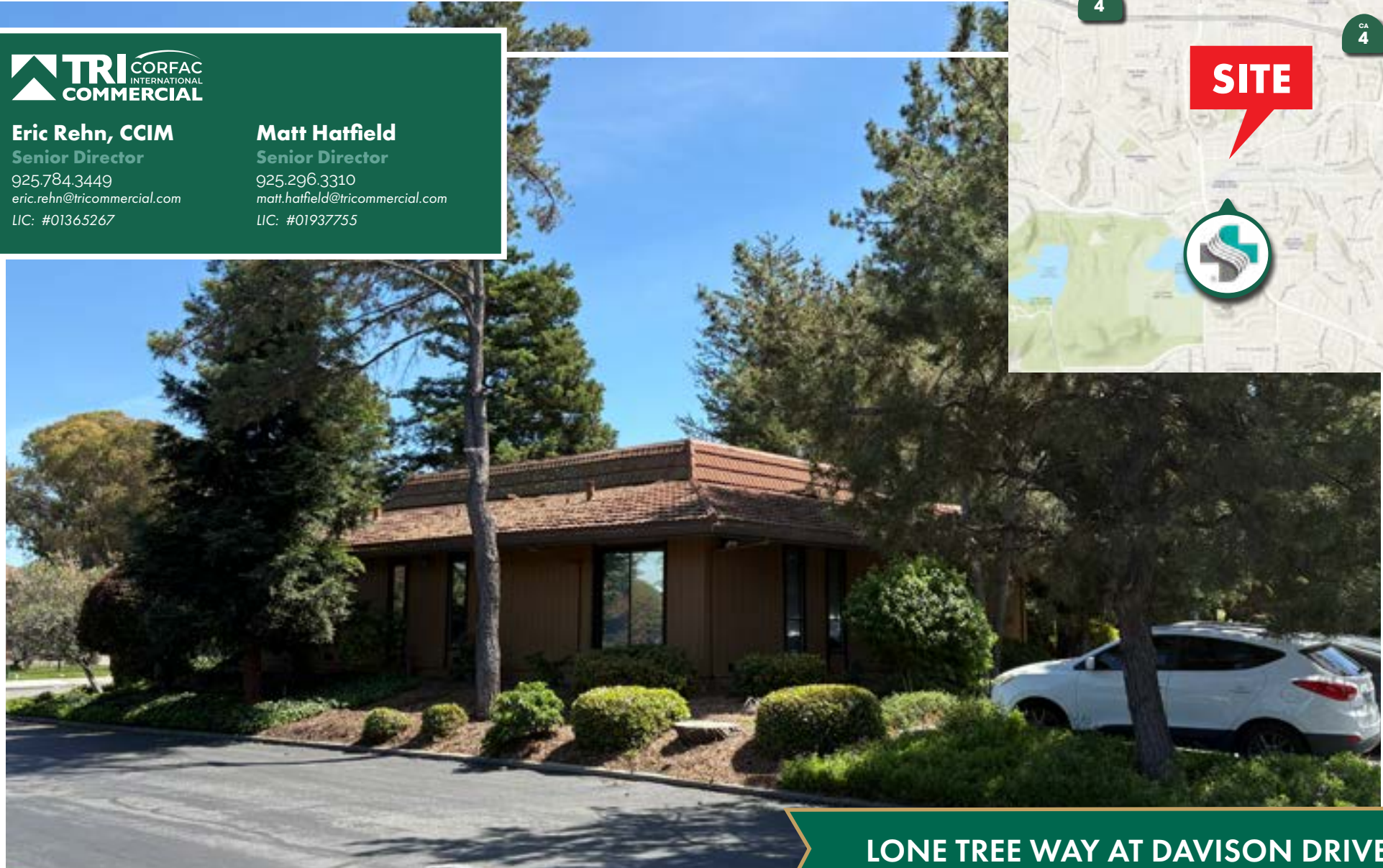
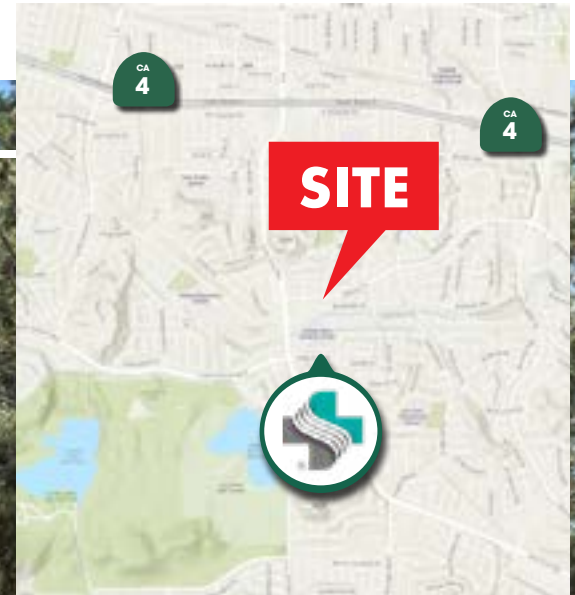
# MEDICAL OFFICE | AVAILABLE FOR LEASE

**ANTIOCH MEDICAL PARK, ANTIOCH, CA 94509**



**Eric Rehn, CCIM**  
Senior Director  
925.784.3449  
eric.rehn@tricommercial.com  
LIC: #01365267

**Matt Hatfield**  
Senior Director  
925.296.3310  
matt.hatfield@tricommercial.com  
LIC: #01937755



**LONE TREE WAY AT DAVISON DRIVE**

# MEDICAL OFFICE AVAILABLE FOR LEASE

ANTIOCH PROFESSIONAL PARK, ANTIOCH, CALIFORNIA 94509



**Eric Rehn, CCIM**

925.784.3449

[eric.rehn@tricommercial.com](mailto:eric.rehn@tricommercial.com)

LIC: #01365267

**Matt Hatfield**

925.296.3310

[matt.hatfield@tricommercial.com](mailto:matt.hatfield@tricommercial.com)

LIC: #01937755



[www.tricommercial.com](http://www.tricommercial.com)

# MEDICAL OFFICE AVAILABLE FOR LEASE

ANTIOCH PROFESSIONAL PARK, ANTIOCH, CALIFORNIA 94509

3720 SUNSET LN



**Eric Rehn, CCIM**

925.784.3449

[eric.rehn@tricommercial.com](mailto:eric.rehn@tricommercial.com)

LIC: #01365267

**Matt Hatfield**

925.296.3310

[matt.hatfield@tricommercial.com](mailto:matt.hatfield@tricommercial.com)

LIC: #01937755



[www.tricommercial.com](http://www.tricommercial.com)

# MEDICAL OFFICE AVAILABLE FOR LEASE

ANTIOCH PROFESSIONAL PARK, ANTIOCH, CALIFORNIA 94509



## PROPERTY HIGHLIGHTS

- Six medical / professional office buildings
- ±59,261 total square feet
- Prominent Lone Tree Way address
- Turn-key medical units
- Separately metered electrical and janitorial
- Close proximity to restaurants and retail amenities
- Across the street from Sutter-Delta Medical Center
- Ample parking
- Various suites sizes to accommodate both the smallest and largest tenant requirements
- Established landscaping provides shaded parking areas
- On-site Security Patrol

## AVAILABLE

- ±276 - 1,618 RSF
- Rental Rate: \$1.10 NNN/psf/month
- E6: ±276 SF, flat rate of \$650.00/Mo

**Eric Rehn, CCIM**

925.784.3449

eric.rehn@tricommercial.com

LIC: #01365267

**Matt Hatfield**

925.296.3310

matt.hatfield@tricommercial.com

LIC: #01937755



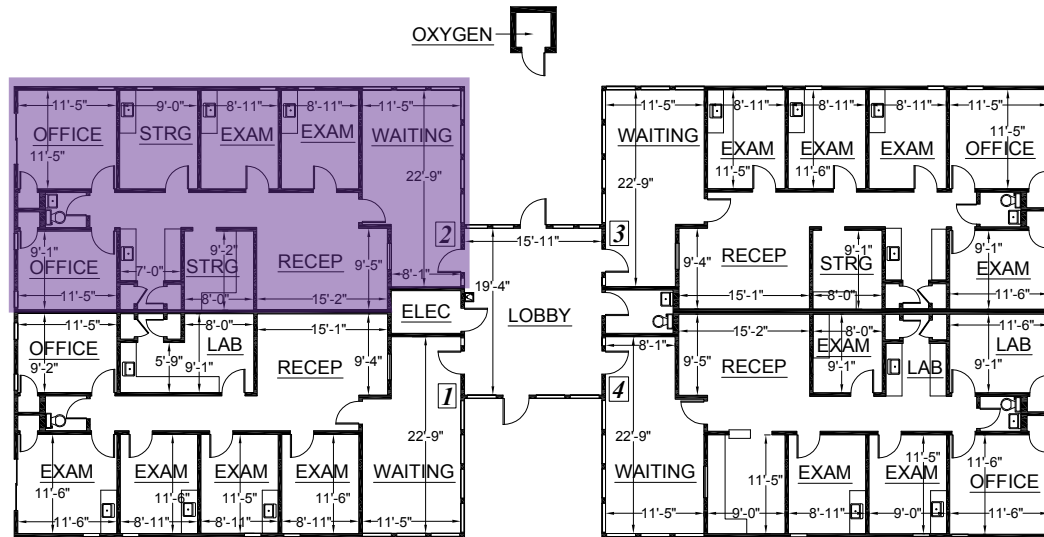
www.tricommercial.com

# MEDICAL OFFICE AVAILABLE FOR LEASE

ANTIOCH PROFESSIONAL PARK, ANTIOCH, CALIFORNIA 94509



**3700 SUNSET LN**



3700	RSF
Suite 2 Available	±1,421

**Eric Rehn, CCIM**  
 925.784.3449  
 eric.rehn@tricommercial.com  
 LIC: #01365267

**Matt Hatfield**  
 925.296.3310  
 matt.hatfield@tricommercial.com  
 LIC: #01937755



www.tricommercial.com

