



Colliers

Available
For Lease

John Carpin

Senior Vice President
+1 804 267 7216
john.carpin@colliers.com

Catherine Walker

Vice President
+1 804 968 1978
catherine.walker@colliers.com

2221 Edward Holland Dr
Suite 600 | Richmond, VA
P: +1 804 320 5500
colliers.com/richmond

Center Park I

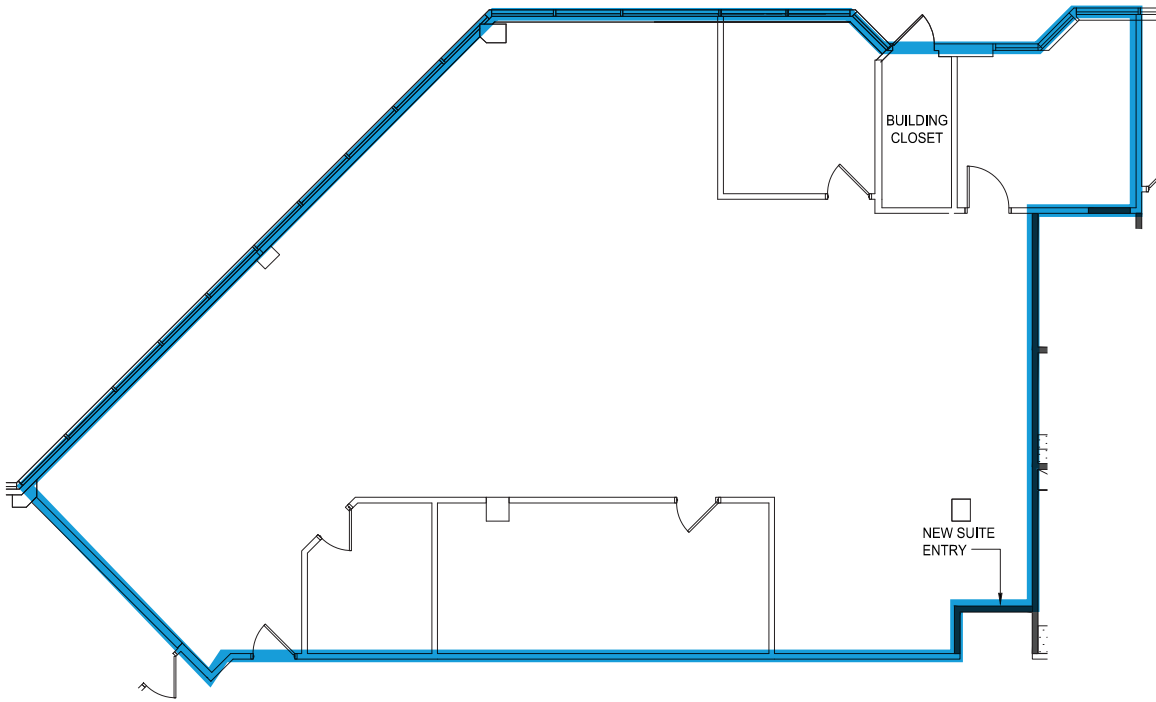
4315-4329 Cox Rd, Glen Allen, VA 23060

- 14,436 SF single-story office building in the heart of Innsbrook Corporate Center
- Available Suites
 - 4323: 2,361 RSF
 - 4327: 2,988 RSF
- Renovated common areas
- 4/1,000 SF parking
- Signalized intersection at Center Park entrance
- Easy access to I-64, I-288 and US 250 as well as numerous retail, lodging, restaurant, and hotel options
- Innsbrook features 850 acres with 5 million square feet of office space with walking/jogging trails and 3 lakes
- Owned by Lingerfelt and professionally managed by Commonwealth Commercial

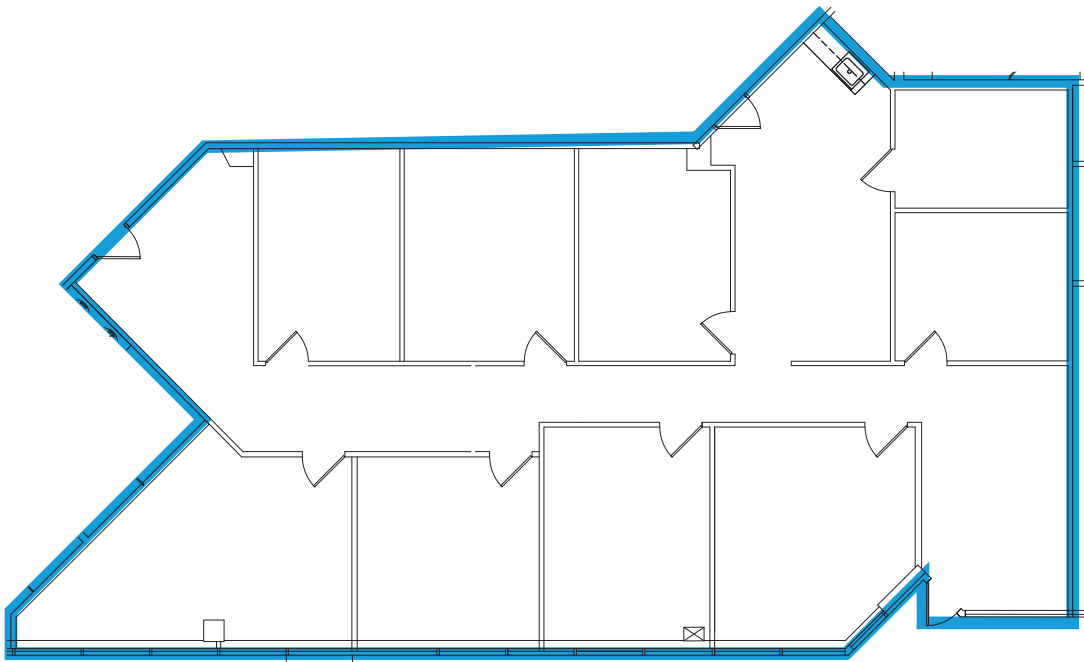
Center Park I

Available Suites

Suite 4327: 2,988 RSF



Suite 4323: 2,361 RSF



Center Park I



Planned 34 Acre Mixed Use Development

Short Pump Town Center
 Dillard's macy's Apple
 MAGGIANO'S POTTERY BARN L.L.Bean
 The Cheesecake Factory DICK'S SPORTING GOODS J.CREW
 Crate & Barrel

Brookhollow Shopping Center
 Target Home Depot Kohl's
 Hobby Lobby Sonic

INNSBROOK CORPORATE CENTER
 INNSBROOK
 Center Park
 Innsbrook Shoppes
 Firehouse Subs Taziki's
 Hondos Capital Area Bank

West Broad Marketplace
 Wegmans Cabela's
 Five Guys

Greengate
 LIDL mellow mushroom
 Firehouse Subs The Bakery

Short Pump Crossing
 ALDI Chick-fil-dee Staples
 ABC TAZZA Staples

West Broad Village
 Whole Foods REI HomeGoods
 Bonefish Grill Chuy's Dave's Hottery Loft

TRADER JOE'S ULTA
 five BELOW Sweet Frog
 Longhorn Steakhouse petco

Lowe's
 Sam's Club
 Kroger

crumbl
 Planet Fitness

Contact us:

John Carpin
 Senior Vice President
 +1 804 267 7216
 john.carpin@colliers.com

Catherine Walker
 Vice President
 +1 804 968 1978
 catherine.walker@colliers.com

Colliers
 2221 Edward Holland Dr
 Suite 600 | Richmond, VA
 P: +1 804 320 5500