

## RETAIL SPACE AVAILABLE

The Plaza at Centerstone is an upscale retail and lifestyle center like none other in Conway. With an outdoor courtyard and water feature welcoming you as you enter, this prime location offers exciting opportunities within the thriving and rapidly growing Centerstone community—making it the perfect place for your business to flourish.

### ✓ Phase IV Availability

*Adjacent suites can be combined.  
Leasing fee available.*

#### 12 Suites | 16,800 SF

**Level 1** ■ \$22-\$25/ft, NNN, \$20/ft T.I. Allowance

**Level 2** ■ 19/ft, NNN, \$20/ft T.I. Allowance

### Why Choose us?

- Maximum Visibility & Access Location
- Rapidly Expanding Residential & Retail
- Across The Street From UCA
- Easy Access To I-40
- 750+ Apartments Within Walking Distance

Conway, AR  
**Demographics**



Population  
**73,068**



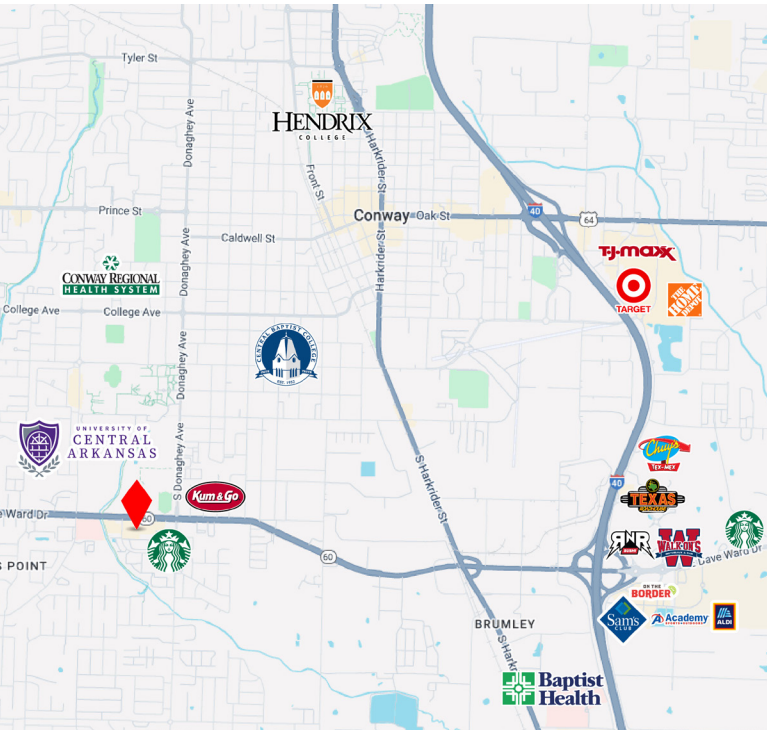
Avg. HH Income  
**\$83,756**



Dave Ward Dr.  
Traffic Count  
**35,000+**

# the plaza at CENTERSTONE

2235 Dave Ward Dr,  
Conway, AR

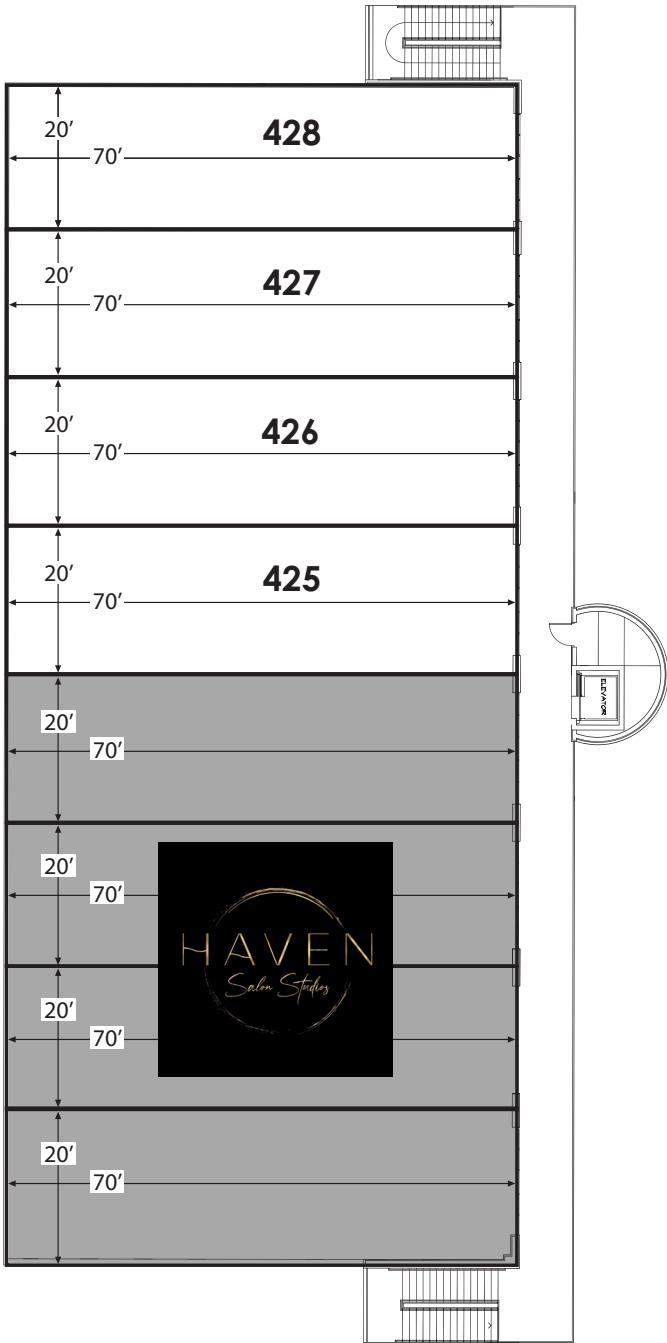


Phase IV

**12 Suites**  
**16,800 SF**

## Key Features

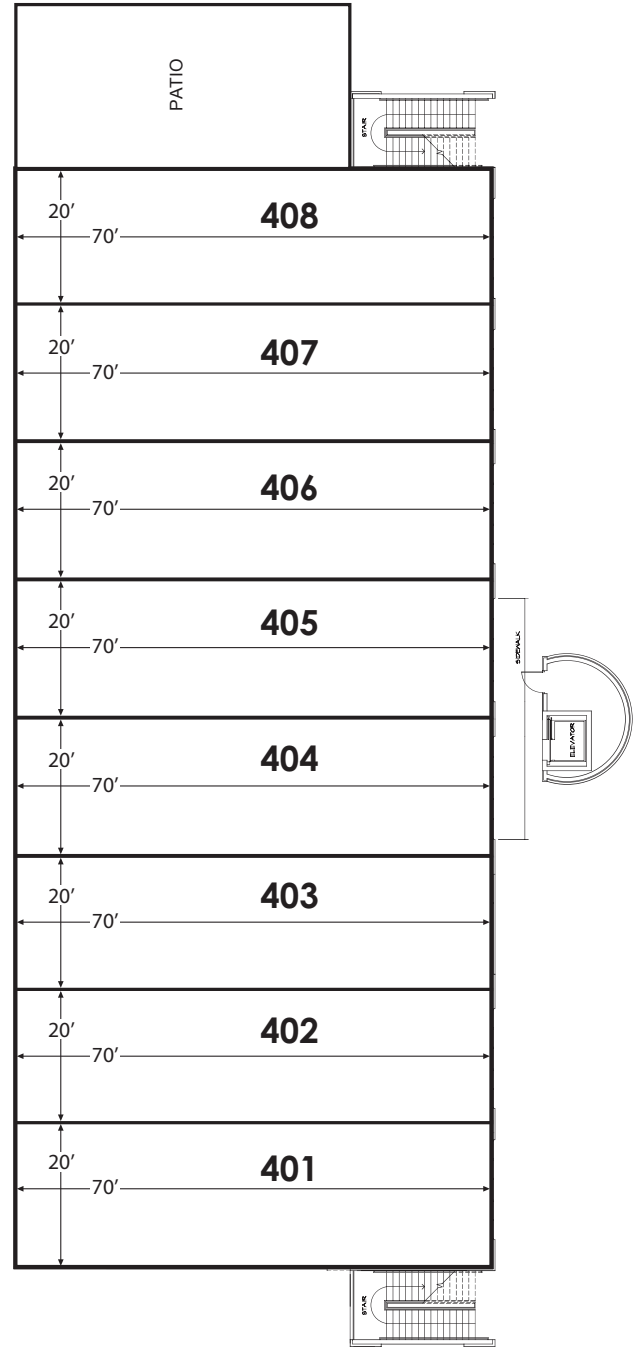
- Inviting Patio Space Available
- Convenient Elevator Access
- Courtyard Fountain Feature
- Near Major Intersection
- Ample On-site Parking



**Phase IV Upper Level Layout**

Each bay is 1,400 SF

*Bays can be combined*



**Phase IV Lower Level Layout**

Each bay is 1,400 SF

*Bays can be combined*