

1030 METSO WAY, COLUMBIA, SC

±244,945 SF

FOR LEASE

INDUSTRIAL
BUILDING



SOUTHEAST
INDUSTRIAL PROPERTIES

LEASE RATE:

\$5.75
PSF NNN

VIRTUAL TOUR

VIEW VIDEO

VIEW LISTING

PROPERTY HIGHLIGHTS

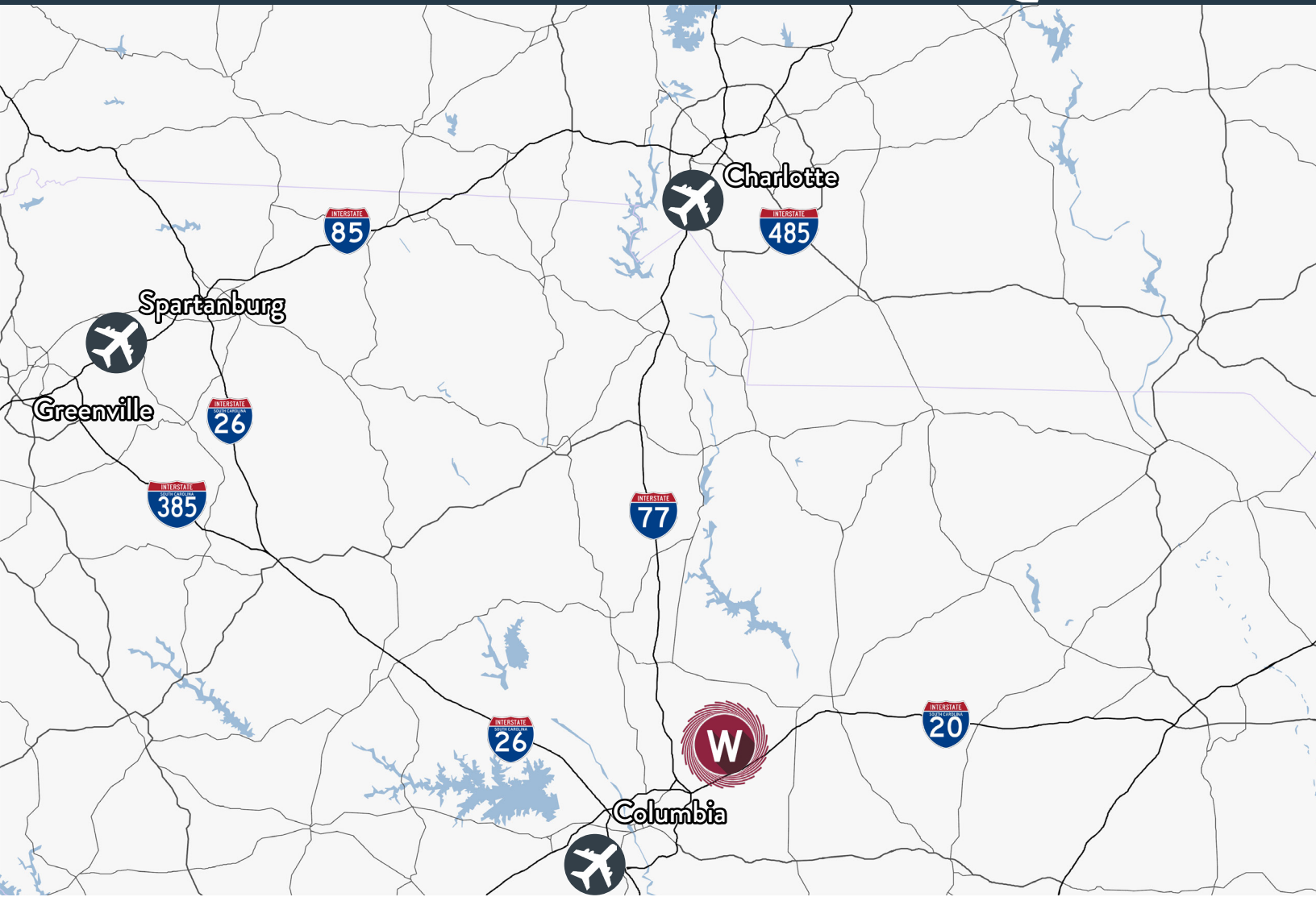
- Building area:
 - ±244,945 SF TOTAL
 - ±204,366 SF warehouse
 - ±31,310 SF office space
 - ±9,269 SF paint building
- Site: ±40.73 acres, secured & fenced
- ±5 acres improved for trailers or other storage
- Clear height: 27' to 40'
- Cranes: (11) from 5-35 ton | 18'-28' under hook
- New roof: 2005-2009
- Construction:
 - Walls | Insulated metal
 - Floors | 12"-16" concrete (estimated)
- Former use: Mineral process equipment manufacturing
- Gas: 2" and 4" lines
- Utilities:
 - Water | City of Columbia
 - Sewer | Palmetto Utilities

Colliers

CHUCK SALLEY, SIOR
Managing Director
+1 803 401 4266
chuck.salley@colliers.com

THOMAS BEARD, SIOR
Vice President
+1 803 401 4247
thomas.beard@colliers.com

JOHN PEBBLES, SIOR
Vice President
+1 803 401 4226
john.pebbles@colliers.com











THE AREA

Located in Columbia, the site is situated in the central part of South Carolina, midway between Atlanta and Charlotte via Interstate 20 and Interstate 77, and halfway from Miami to New York via Interstate 95.

DISTANCE

Interstate 20	±3 miles
Interstate 77	±5 miles
Interstate 26	±15 miles
Interstate 95	±50 miles
Columbia Metropolitan Airport	±20 miles
Charlotte Douglas International Airport	±100 miles
Port of Charleston	±125 miles

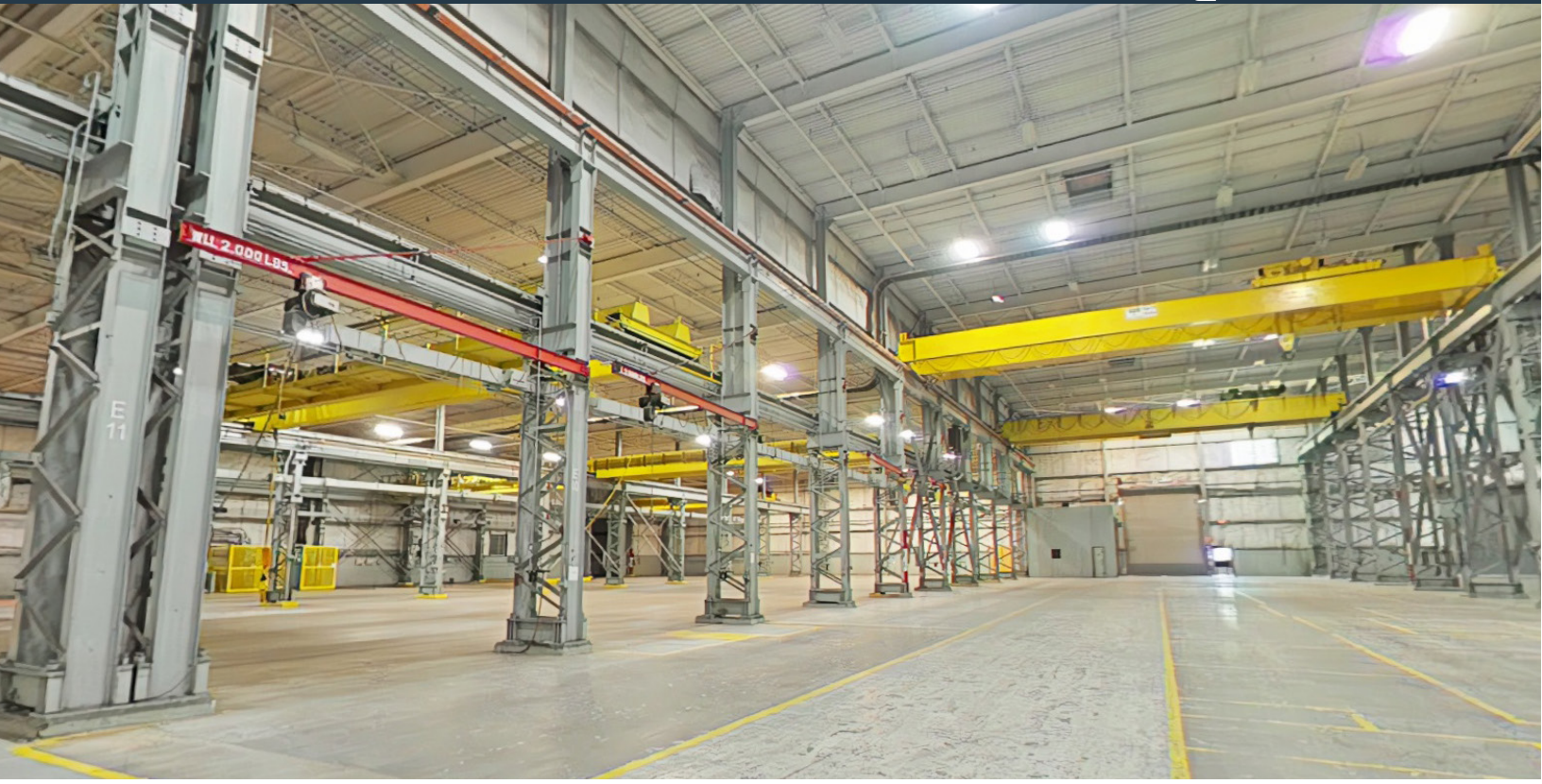
PROPERTY FEATURES

			
PARKING ±203 paved auto spaces (extra graded and stoned surface available)	CLEAR HEIGHT 27' - 40'	SPRINKLERS 100% wet	POWER One (1) 1,000 and one (1) 750 KVA transformer with two (2) panels each (2000 A 480 V 3 ph)
			
COLUMN SPACING 18'-1" X 55'-3" Bay length: 480'	LIGHTING T-5 Installed 2008	DOCKS 4 interior dock-high doors 6 grade-level doors (16' x 18')	FLOORS 12"-16" concrete (estimated)

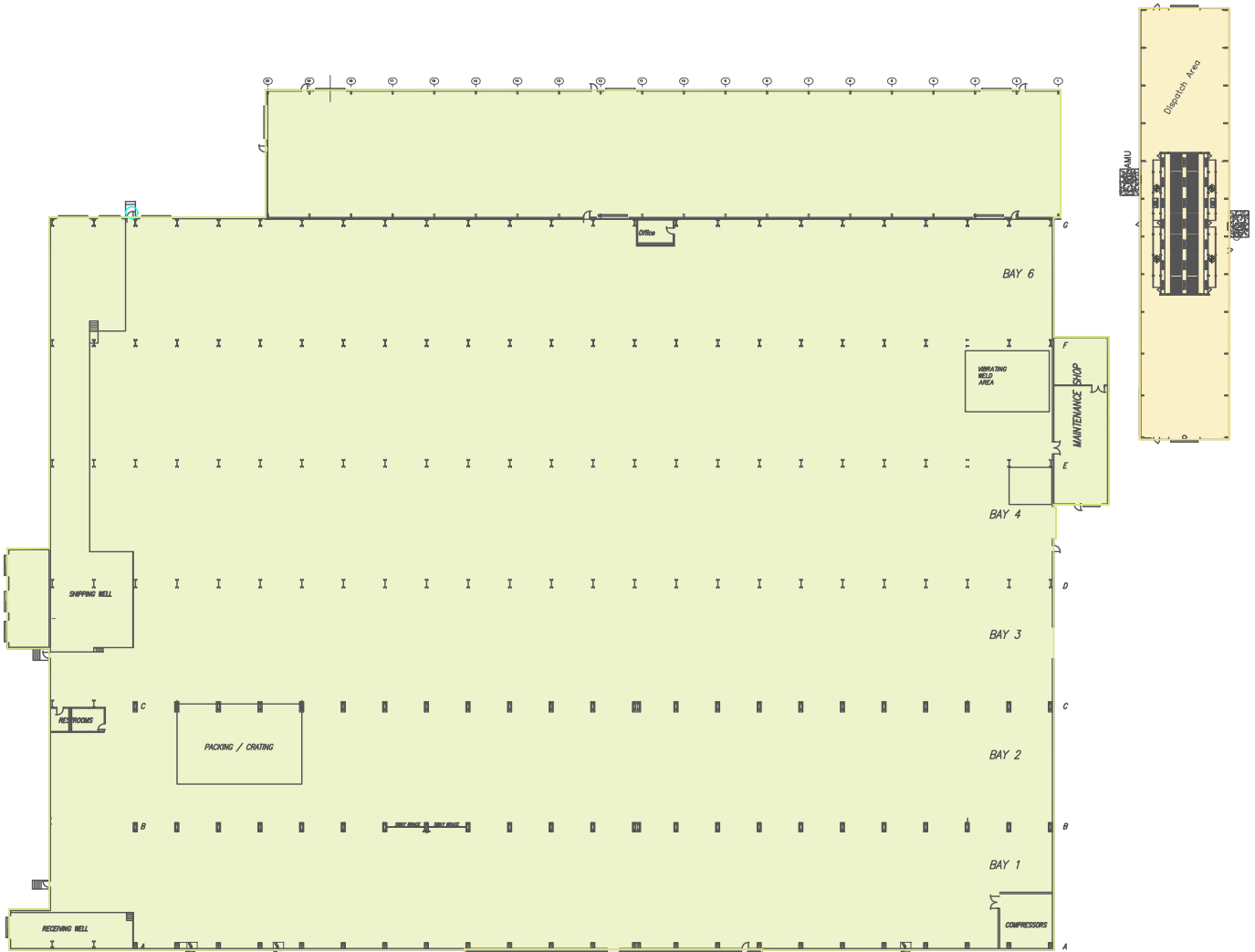


FOR LEASE | 1030 METSO WAY, COLUMBIA, SC

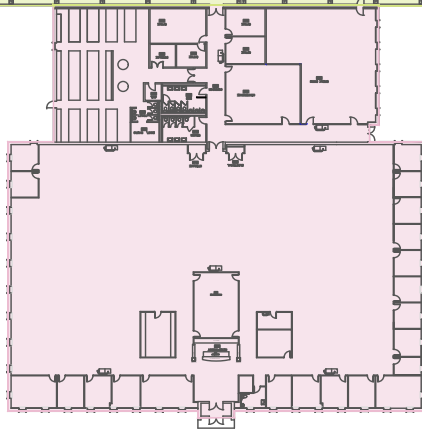
FOR LEASE | 1030 METSO WAY, COLUMBIA, SC



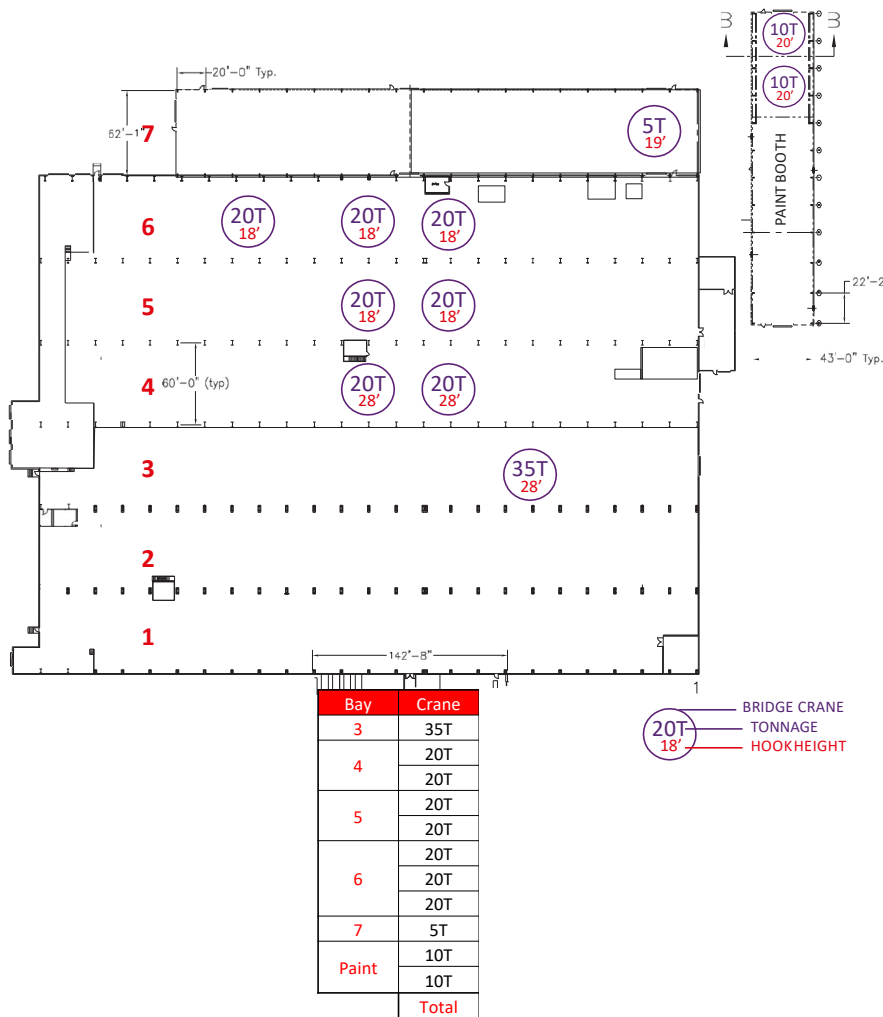
WAREHOUSE & OFFICE FLOOR PLAN



- Warehouse : 204,366 SF
- Office: 31,310 SF
- Auxiliary Building: 9,269 SF



CRANE SPECIFICATIONS



VIRTUAL TOUR

ricohotours.com

VIEW VIDEO

vimeo.com/515463692

VIEW LISTING

southeastindustrialproperties.com

Colliers

CHUCK SALLEY, SIOR
 Managing Director
 +1 803 401 4266
 chuck.salley@colliers.com

THOMAS BEARD, SIOR
 Vice President
 +1 803 401 4247
 thomas.beard@colliers.com

JOHN PEBBLES, SIOR
 Vice President
 +1 803 401 4226
 john.pebbles@colliers.com

This document has been prepared by Colliers International for advertising and general information only. Colliers International makes no guarantees, representations or warranties of any kind, expressed or implied, regarding the information including, but not limited to, warranties of content, accuracy and reliability. Any interested party should undertake their own inquiries as to the accuracy of the information. Colliers International excludes unequivocally all inferred or implied terms, conditions and warranties arising out of this document and excludes all liability for loss and damages arising there from. This publication is the copyrighted property of Colliers International and/or its licensor(s). ©2025. All rights reserved.



Providing homes for businesses by finding solutions that create value.