

SITE DATA:

RESIDENTIAL	
- TOWNHOUSES (25x60')	174 UNITS
- TOTAL AREA	34.3 ACRES
- NEW RIGHT-OF-WAY	4.4 ACRES
- EX. RIGHT-OF-WAY	0.5 ACRES
- LOT AREA (25x105')	10.6 ACRES
- STORM BASINS	1.7 ACRES
- OPEN SPACE	17.1 ACRES
COMMERCIAL	
- TOTAL AREA	13.0 ACRES
- NEW RIGHT-OF-WAY	1.3 ACRES
- GAS STATION PARCEL	3.1 ACRES
- COMMERCIAL PARCEL	2.7 ACRES
- SELF-STORAGE PARCEL	4.1 ACRES

TMS# 151-00-06-003
Jason & Amy Fricks
Slide 2756 Pg. 9
DB 15074 Pg. 199

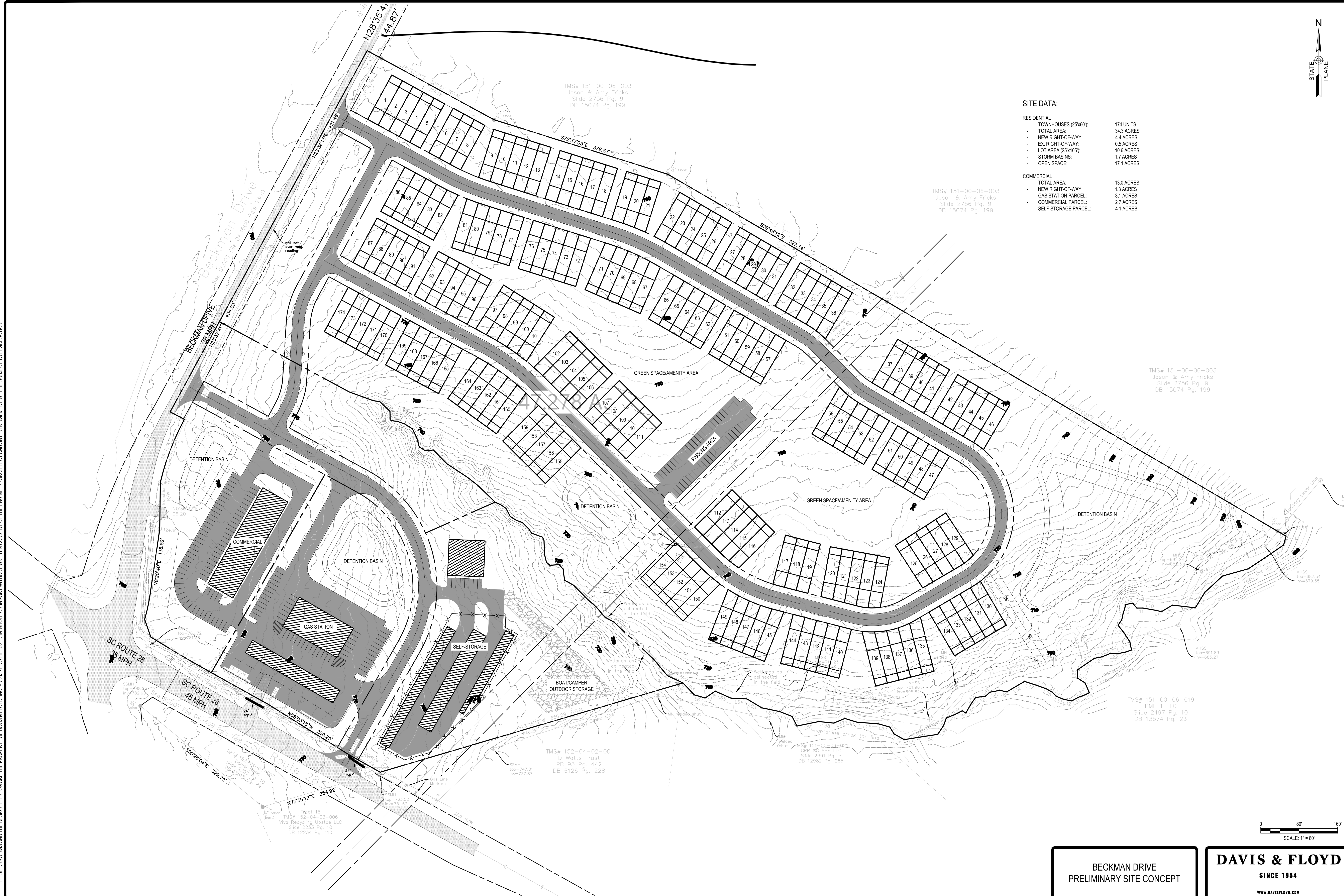
TMS# 151-00-06-003
Jason & Amy Fricks
Slide 2756 Pg. 9
DB 15074 Pg. 199

TMS# 151-00-06-019
PME 1 LLC
Slide 2497 Pg. 10
DB 13574 Pg. 23

TMS# 152-04-02-001
D Watts Trust
PB 93 Pg. 442
DB 6126 Pg. 228

TMS# 152-04-03-008
Vive Recycling Upator LLC
Slide 2253 Pg. 10
DB 12234 Pg. 110

K:\jbsawyer\110\001\GMI\plans\india\2023\05\08_Beckman Road Site\Beckman Drive SMALL PROJECT.dwg, 5/11/2023, 3:03:51 PM, James D. Combs, jr.
THESE DRAWINGS AND THE DESIGN THEREON ARE THE PROPERTY OF DAVIS & FLOYD, INC. AND MAY NOT BE USED IN WHOLE OR IN PART WITHOUT WRITTEN CONSENT OF THE ENGINEER, ARCHITECT AND ANY INFRINGEMENT WILL BE SUBJECT TO LEGAL ACTION



BECKMAN DRIVE
PRELIMINARY SITE CONCEPT

DAVIS & FLOYD
SINCE 1954
WWW.DAVISFLOYD.COM