

CVCB



CENTRAL
VALLEY
COMMERCIAL
BROKERS, INC

FOR LEASE

169 Central Avenue

APN: 027-150-05



Property Details

- 2217 SF Retail Space
- \$1.15/SF MG
- Existing beauty salon
- 12ft ceilings
- High vehicle & foot traffic
- Located in the heart of downtown Shafter
- Water – City of Shafter
- Sewer – City of Shafter
- Electrical – PG&E



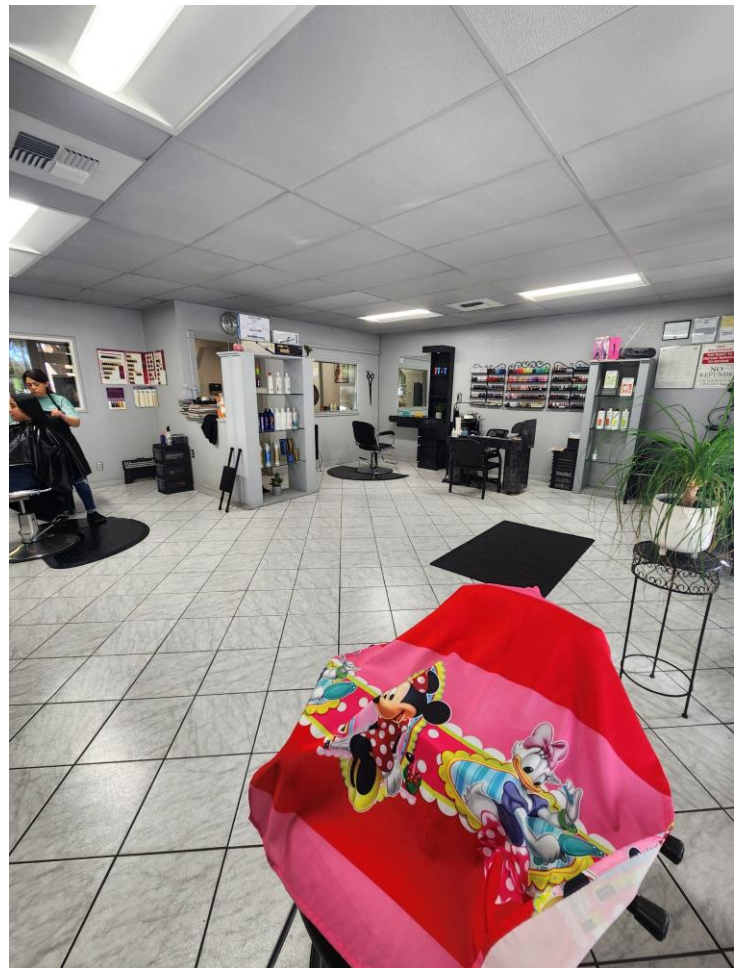
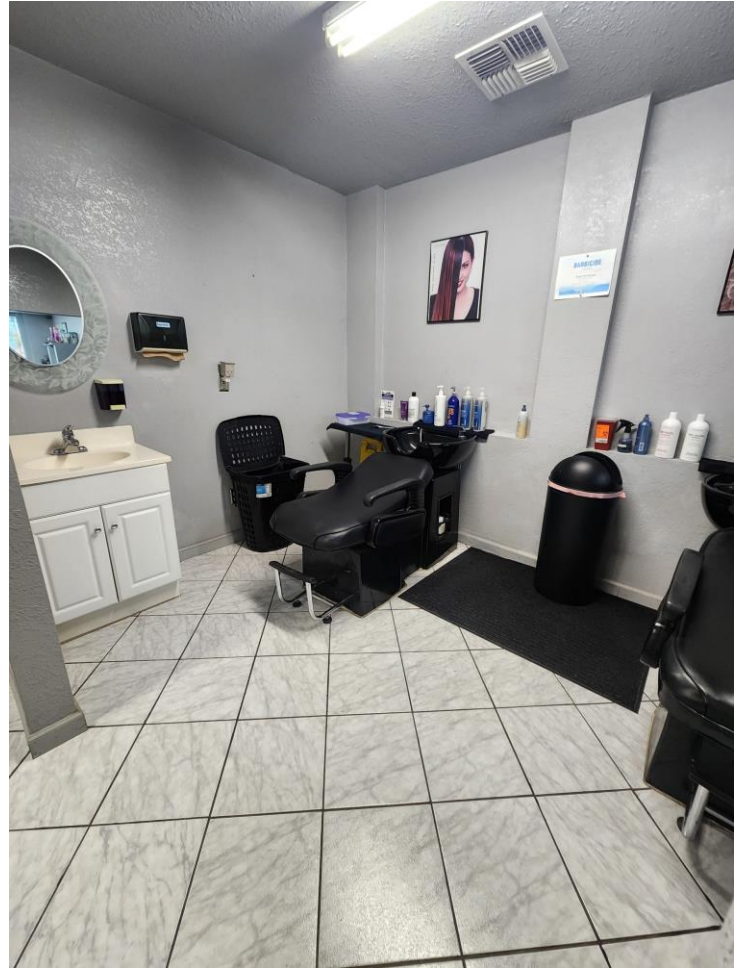
area

HENRY E. MENDEZ, JR.

CA RE #01127054 CA DRE #02084340 • Broker/ Principal
hmendez@cvcbrokers.com • 661.404.4090 Office
930 Truxtun Ave., Suite 101, Bakersfield, CA 93301

The information contained herein may have been obtained from sources other than CVCB. We have not verified such information and make no guarantees, warranties, or representations about such information. It is your responsibility to independently confirm its accuracy and completeness prior to purchasing/leasing the property.

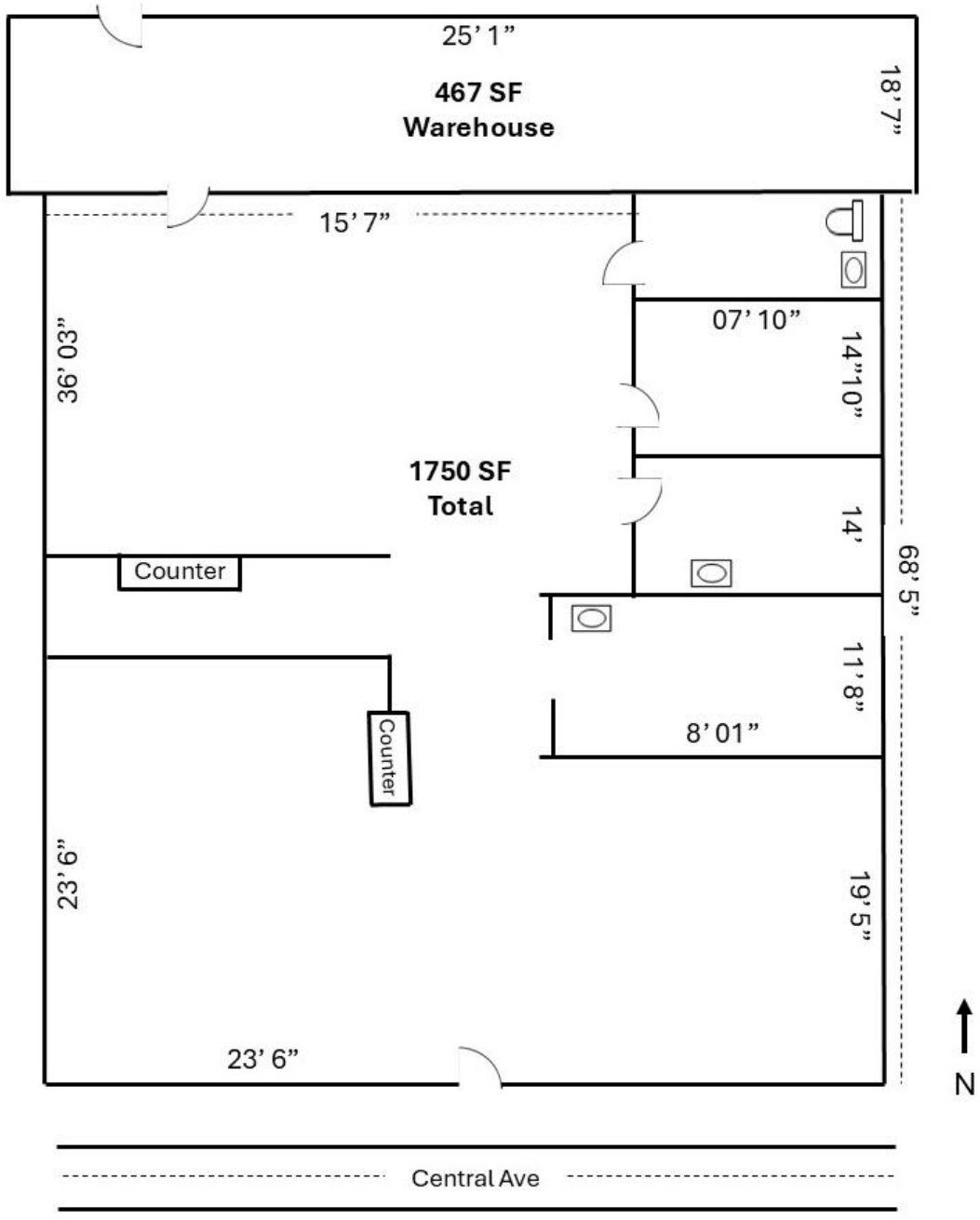
Property Photos



FOR LEASE

169 Central Avenue

Floor Plan



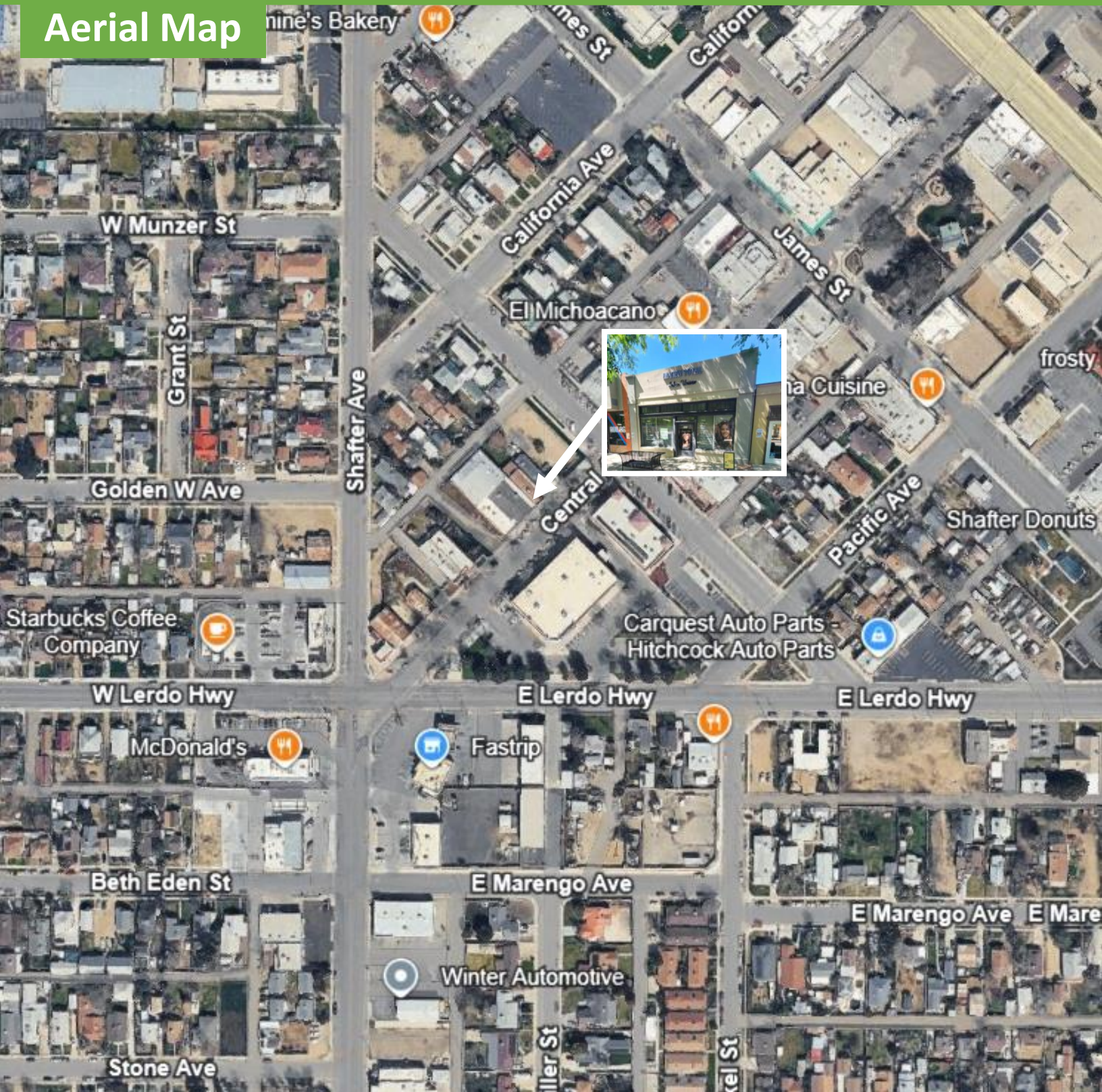
HENRY E. MENDEZ, JR.
CA RE #01127054 CA DRE #02084340 • Broker/ Principal
hmendez@cvcbrokers.com • 661.404.4090 Office
930 Truxtun Ave., Suite 101, Bakersfield, CA 93301

The information contained herein may have been obtained from sources other than CVCB. We have not verified such information and make no guarantees, warranties, or representations about such information. It is your responsibility to independently confirm its accuracy and completeness prior to purchasing/leasing the property.

FOR LEASE

169 Central Avenue

Aerial Map



HENRY E. MENDEZ, JR.

CA RE #01127054 CA DRE #02084340 • Broker/ Principal

hmendez@cvcbrokers.com • 661.404.4090 Office

930 Truxtun Ave., Suite 101, Bakersfield, CA 93301

The information contained herein may have been obtained from sources other than CVCB. We have not verified such information and make no guarantees, warranties, or representations about such information. It is your responsibility to independently confirm its accuracy and completeness prior to purchasing/leasing the property.