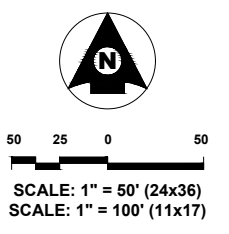
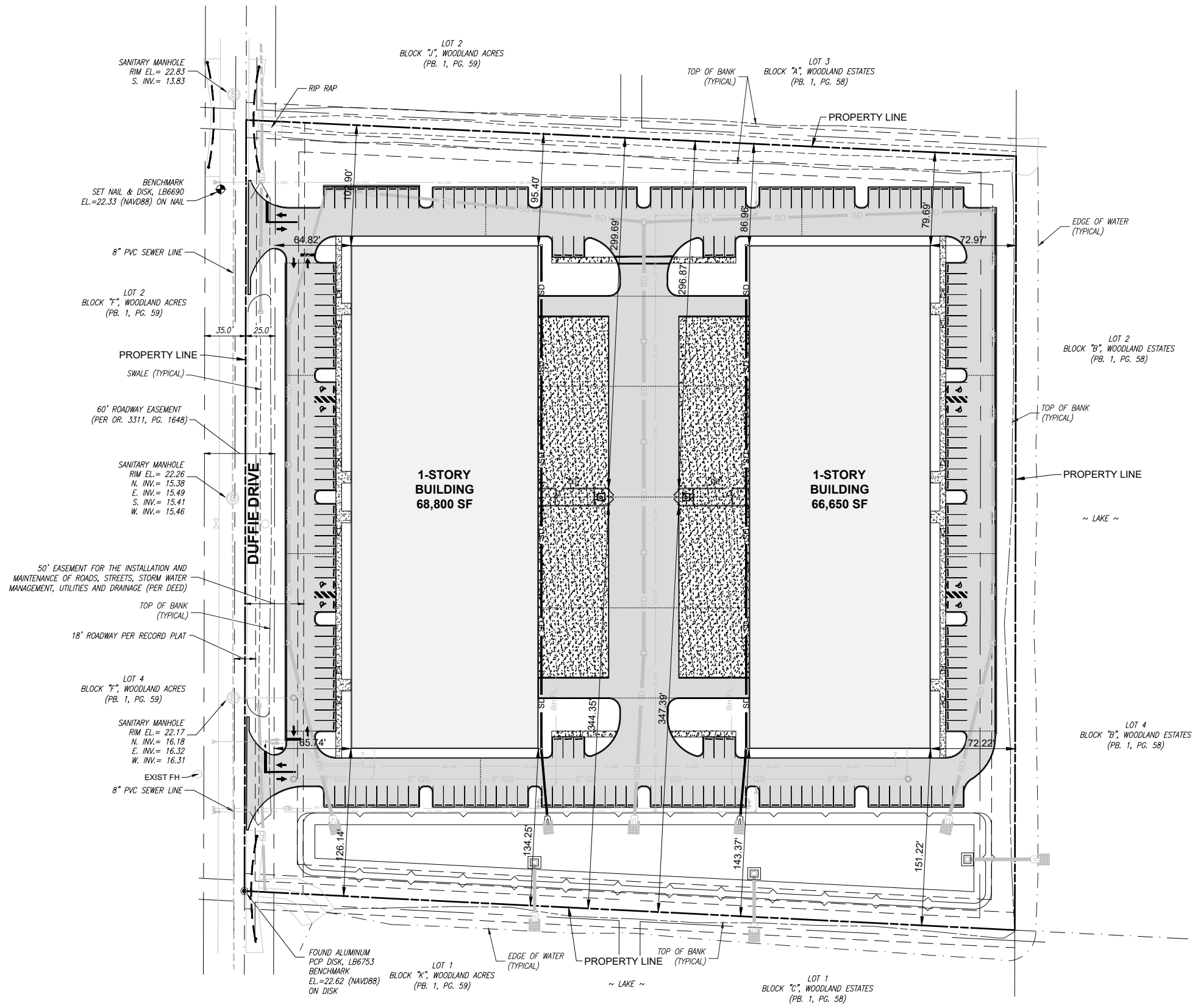


7/25/2024 1:31:24 PM - P:\24-0710 - ACC LOT 45 & 46 WAREHOUSE (CORRA) \DESIGN\ADDI\PLAN SET\06_BLDG SETBACK PLAN.DWG - DEV GANESH



SED
Southwest Engineering & Design

25450 Airport Road, Suite B
Punta Gorda, Florida 33950
Tel. (941) 637-9655 | Fax (941) 637-1149
www.sedfl.com
Certificate of Authorization No. 26551

REV.	DATE	BY	CK'D	DESCRIPTION

Project No.:	24-0710
Project Manager:	G W B
Project Engineer:	G W B
Project Designer:	N J B
Checked By:	-
Approved By:	G W B

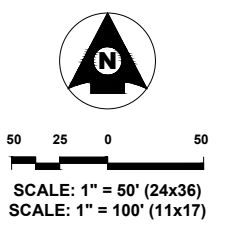
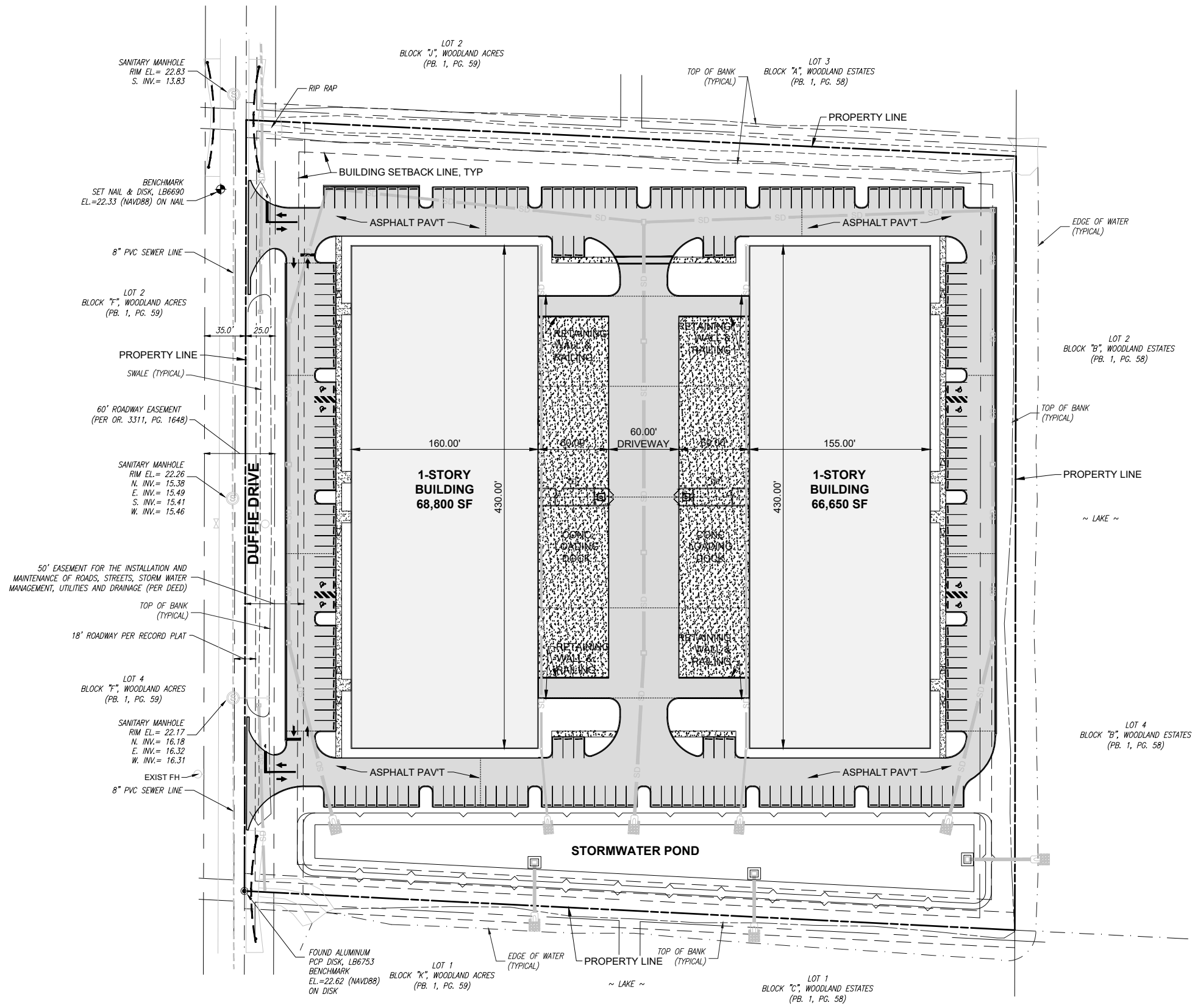
8360 NORTHUP DR, LLC
BUILDING SETBACK PLAN

PUNTA GORDA SECTION 14, TOWNSHIP 41 SOUTH, RANGE 23 EAST FLORIDA

PRELIMINARY PLAN ONLY
NOT FOR CONSTRUCTION
July 25, 2024

DATE:	JULY 2024	SURVEY DATUM	NAVD 88
PROJECT No.:	24-0710	SHEET:	6

7/25/2024 1:31:28 PM - P:\24-0710 - ACC LOT 45 & 46 WAREHOUSE (CORRA) DESIGN\ADDI\PLAN SET\07_MASTER SITE PLAN.DWG - DEV GANESH



SED
Southwest Engineering & Design

25450 Airport Road, Suite B
Punta Gorda, Florida 33950
Tel. (941) 637-9655 | Fax (941) 637-1149
www.sedfl.com
Certificate of Authorization No. 26551

REV.	DATE	BY	CK'D	DESCRIPTION

Project No.:	24-0710
Project Manager:	GWB
Project Engineer:	GWB
Project Designer:	NJB
Checked By:	-
Approved By:	GWB

8360 NORTHUP DR, LLC
MASTER SITE PLAN

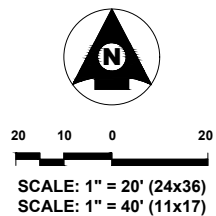
PUNTA GORDA SECTION 14, TOWNSHIP 41 SOUTH, RANGE 23 EAST FLORIDA

PRELIMINARY PLAN ONLY
NOT FOR CONSTRUCTION
July 25, 2024

DATE:	JULY 2024	SURVEY DATUM	NAVD 88
PROJECT No.:	24-0710		
SHEET:	7		

Bar Measures 1 inch

S. INV. = 13.83

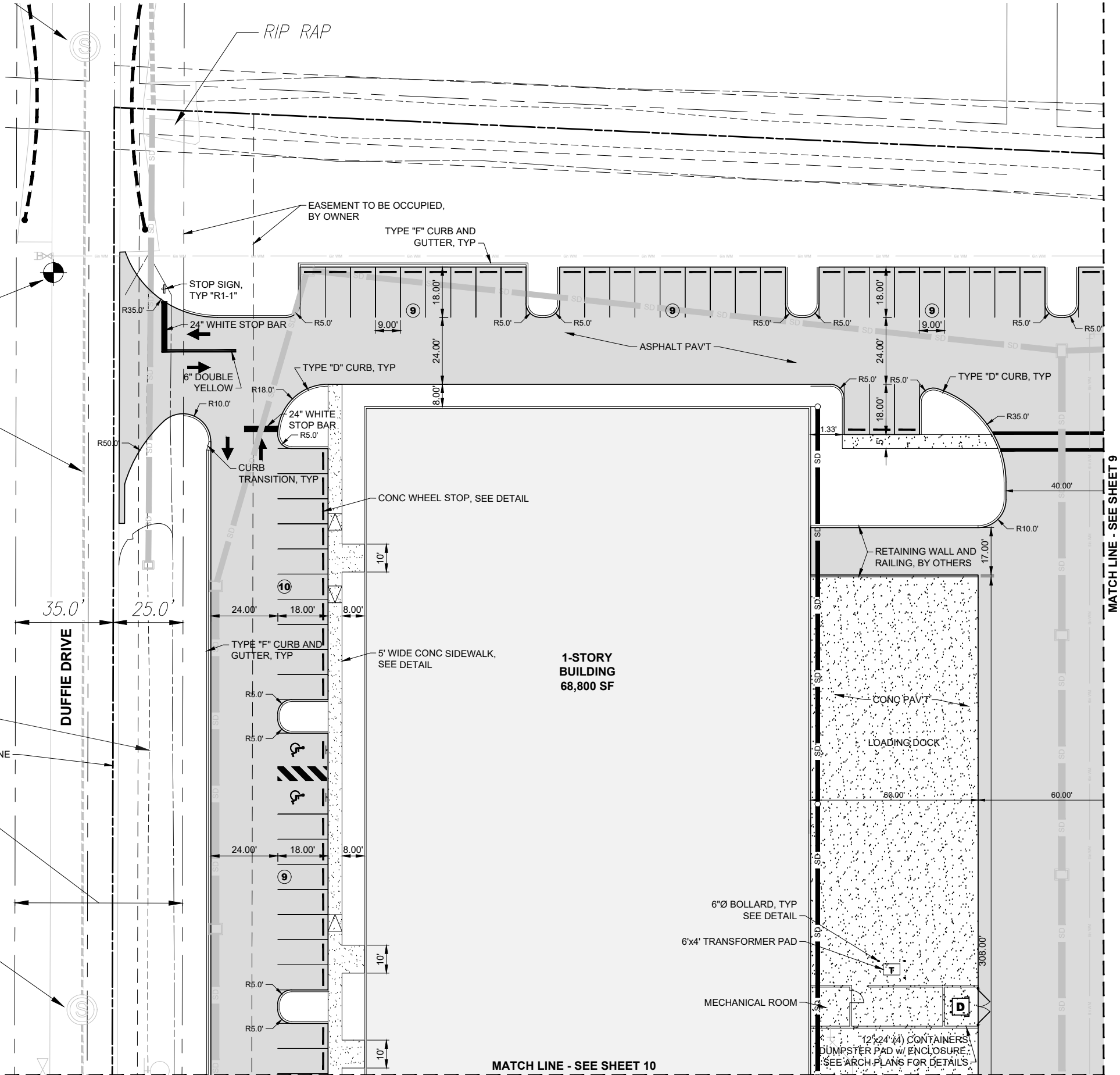


BENCHMARK
SET NAIL & DISK, LB6690
EL. = 22.33 (NAVD88) ON NAIL

LOT 2
BLOCK "F", WOODLAND ACRES
(PB. 1, PG. 59)

60' ROADWAY EASEMENT
(PER OR. 3311, PG. 1648)

SANITARY MANHOLE
RIM EL. = 22.26
N. INV. = 15.38
E. INV. = 15.49
S. INV. = 15.41
W. INV. = 15.46



MATCH LINE - SEE SHEET 9

MATCH LINE - SEE SHEET 10

7/25/2024 1:13:32 PM - P:124-0710 - ACC LOT 45 & 46 WAREHOUSE (CORRA) DESIGN/ADD/PLAN SET/08-11 SITE PLAN DWG - DEV GANESH



25450 Airport Road, Suite B
Punta Gorda, Florida 33950
Tel. (941) 637-9655 | Fax (941) 637-1149
www.sedfl.com
Certificate of Authorization No. 26551

REV.	DATE	BY	CK'D	DESCRIPTION

Project No.:	24-0710
Project Manager:	G W B
Project Engineer:	G W B
Project Designer:	N J B
Checked By:	-
Approved By:	G W B

8360 NORTHUP DR, LLC SITE PLAN

SECTION 14, TOWNSHIP 41 SOUTH, RANGE 23 EAST

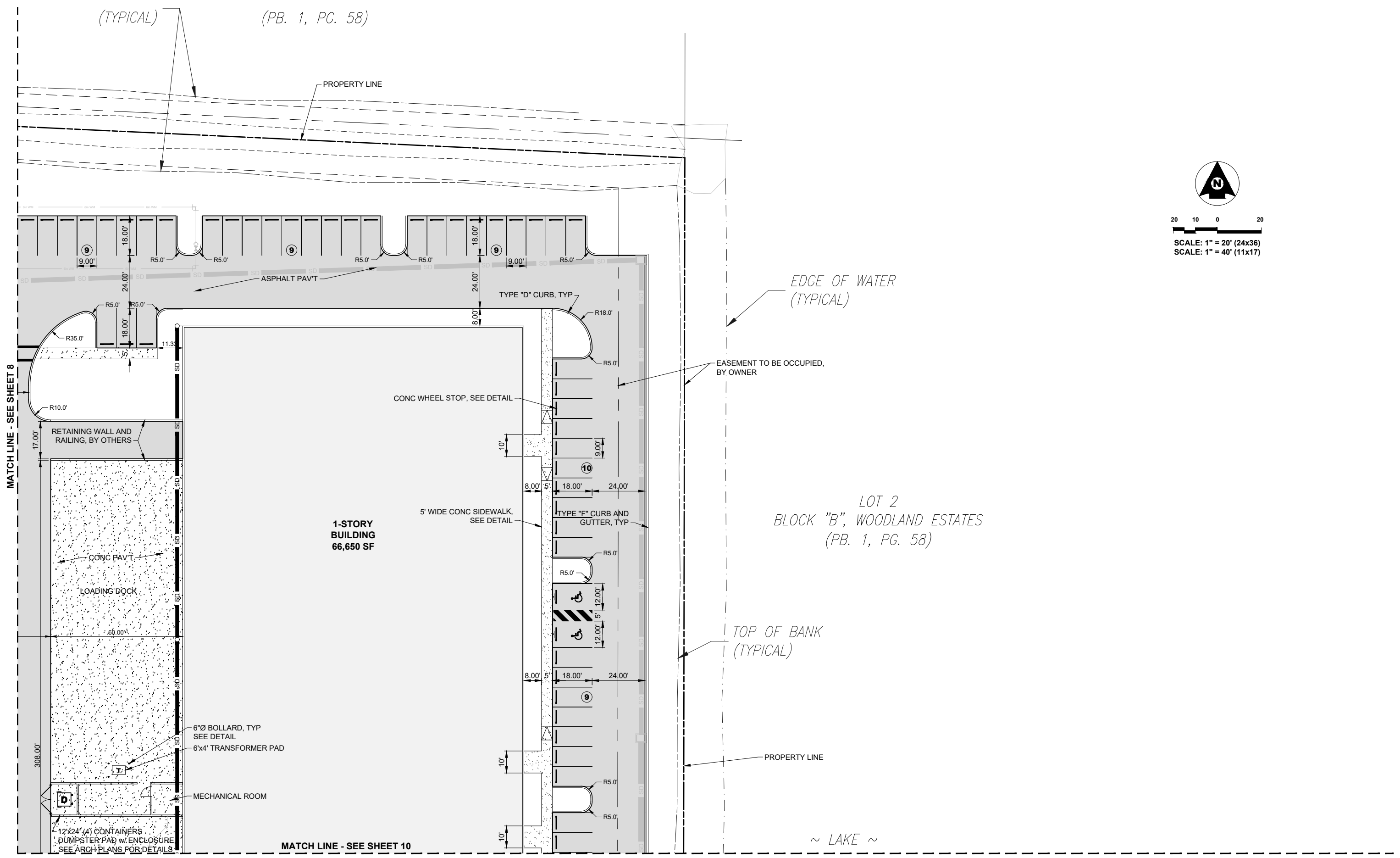
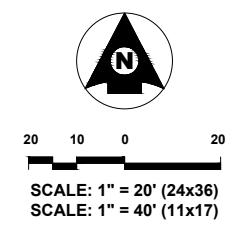
FLORIDA

**PRELIMINARY PLAN ONLY
NOT FOR CONSTRUCTION**
July 25, 2024

DATE:	JULY 2024	SURVEY DATUM	NAVD 88
PROJECT No.:	24-0710	SHEET:	8

Bar Measures 1 inch

(TYPICAL) (PB. 1, PG. 58)



7/25/2024 1:13:13 PM - P:124-0710 - ACC LOT 45 & 46 WAREHOUSE (CORRA) DESIGN/ADD/PLAN SET/08-11 - SITE PLAN DWG - DEV GANESH

SED Southwest Engineering & Design
 25450 Airport Road, Suite B
 Punta Gorda, Florida 33950
 Tel. (941) 637-9655 | Fax (941) 637-1149
 www.sedfl.com
 Certificate of Authorization No. 26551

REV.	DATE	BY	CK'D	DESCRIPTION

Project No.:	24-0710
Project Manager:	G W B
Project Engineer:	G W B
Project Designer:	N J B
Checked By:	-
Approved By:	G W B

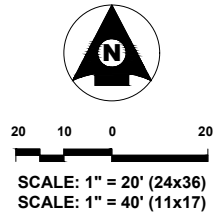
8360 NORTHUP DR, LLC
SITE PLAN

SECTION 14, TOWNSHIP 41 SOUTH, RANGE 23 EAST FLORIDA

PRELIMINARY PLAN ONLY
NOT FOR CONSTRUCTION
 July 25, 2024

DATE:	JULY 2024	SURVEY DATUM:	NAVD 88
PROJECT No.:	24-0710	SHEET:	9

50' EASEMENT FOR THE INSTALLATION AND MAINTENANCE OF ROADS, STREETS, STORM WATER MANAGEMENT, UTILITIES AND DRAINAGE (PER DEED)



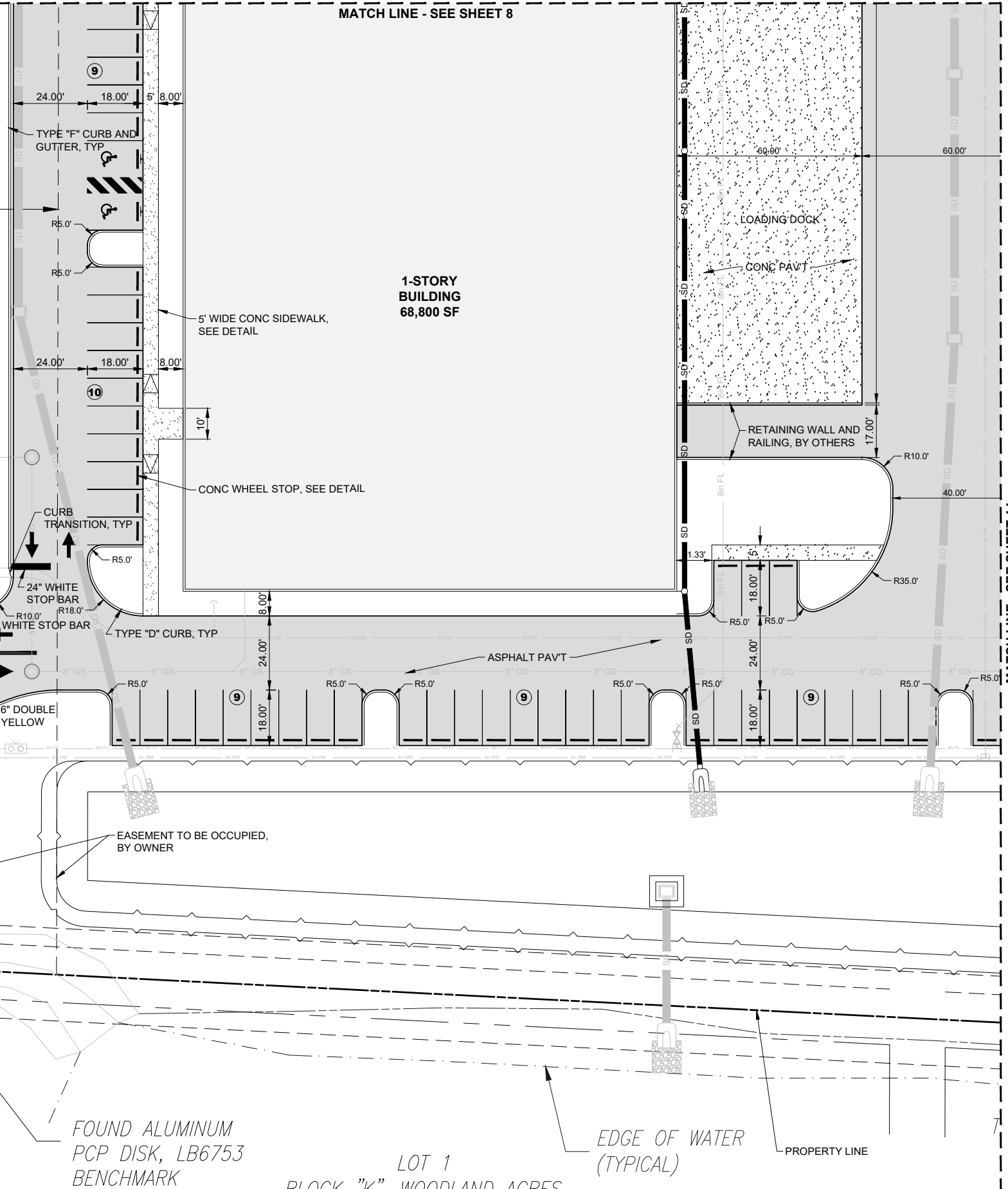
TOP OF BANK (TYPICAL)
18' ROADWAY PER RECORD PLAT

LOT 4
BLOCK "F", WOODLAND ACRES
(PB. 1, PG. 59)

SANITARY MANHOLE
RIM EL. = 22.17
N. INV. = 16.18
E. INV. = 16.32
W. INV. = 16.31

EXIST FH
8" PVC SEWER LINE

DUFFIE DRIVE



FOUND ALUMINUM
PCP DISK, LB6753
BENCHMARK

LOT 1
BLOCK "K", WOODLAND ACRES

EDGE OF WATER (TYPICAL)

PROPERTY LINE

7/25/2024 1:31:33 PM - P:\24-0710 - ACC LOT 45 & 46 WAREHOUSE (CORRA) \DESIGN\ADD\PLAN SET\08-11_SITE PLAN.DWG - DEV GANESH

SED Southwest Engineering & Design
25450 Airport Road, Suite B
Punta Gorda, Florida 33950
Tel. (941) 637-9655 | Fax (941) 637-1149
www.sedfl.com
Certificate of Authorization No. 26551

REV.	DATE	BY	CK'D	DESCRIPTION

Project No.:	24-0710
Project Manager:	G W B
Project Engineer:	G W B
Project Designer:	N J B
Checked By:	-
Approved By:	G W B

PUNTA GORDA

8360 NORTHUP DR, LLC SITE PLAN

SECTION 14, TOWNSHIP 41 SOUTH, RANGE 23 EAST

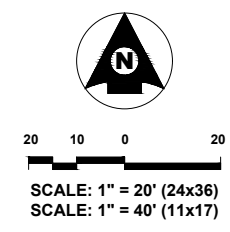
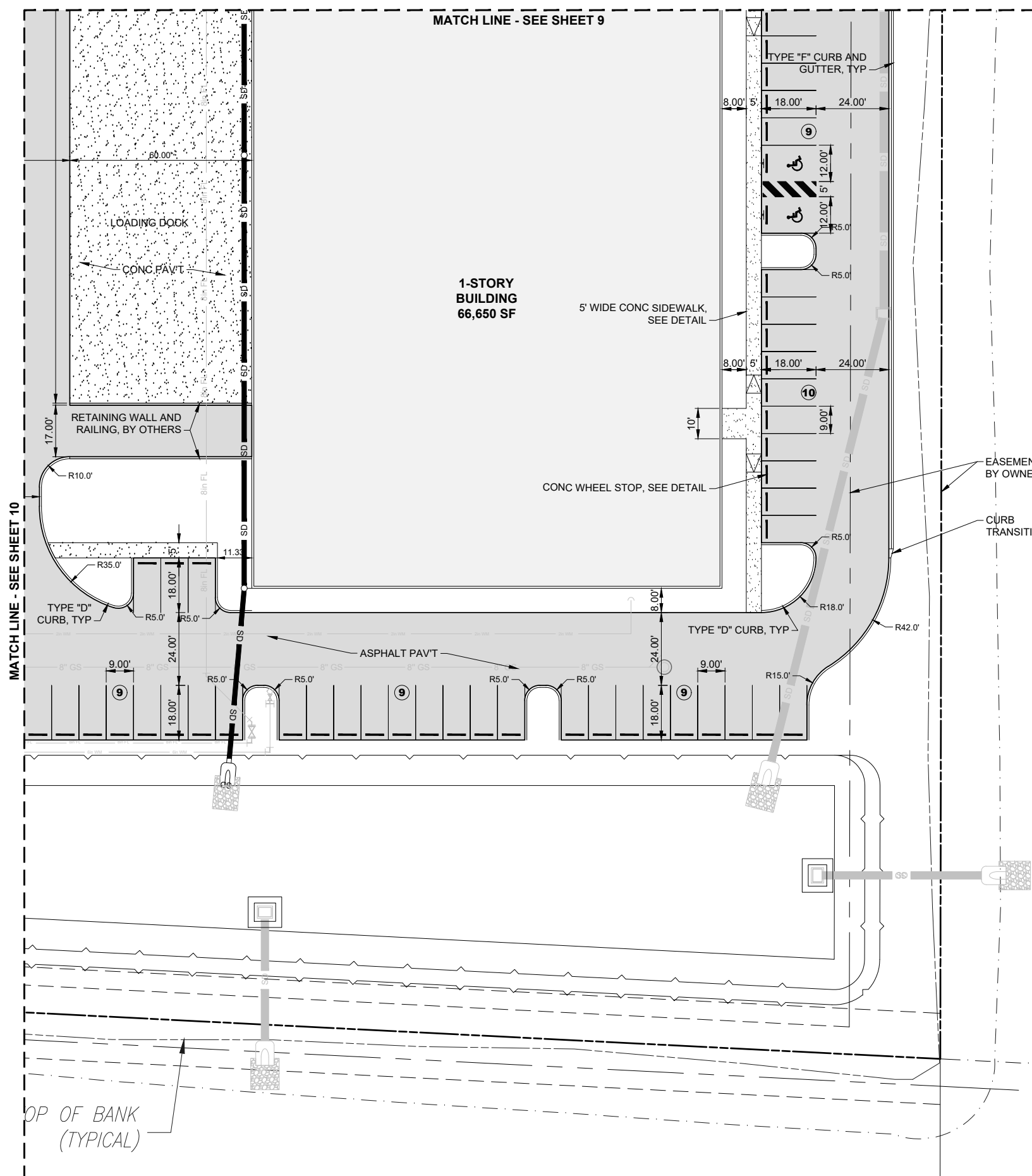
FLORIDA

**PRELIMINARY PLAN ONLY
NOT FOR CONSTRUCTION**
July 25, 2024

DATE:	JULY 2024	SURVEY DATUM	NAVD 88
PROJECT No.:	24-0710	SHEET:	10

Bar Measures 1 inch

7/25/2024 1:31:34 PM - P:\24-0710 - ACC LOT 45 & 46 WAREHOUSE (CORRA) \DESIGN\ADD\PLAN SET\08-11_SITE PLAN.DWG - DEV GANESH



LOT 4
BLOCK "B", WOODLAND ESTATES
(PB. 1, PG. 58)

SED
Southwest Engineering & Design

25450 Airport Road, Suite B
Punta Gorda, Florida 33950
Tel. (941) 637-9655 | Fax (941) 637-1149
www.sedff.com
Certificate of Authorization No. 26551

REV.	DATE	BY	CK'D	DESCRIPTION

Project No.:	24-0710
Project Manager:	G W B
Project Engineer:	G W B
Project Designer:	N J B
Checked By:	-
Approved By:	G W B

8360 NORTHUP DR, LLC
SITE PLAN

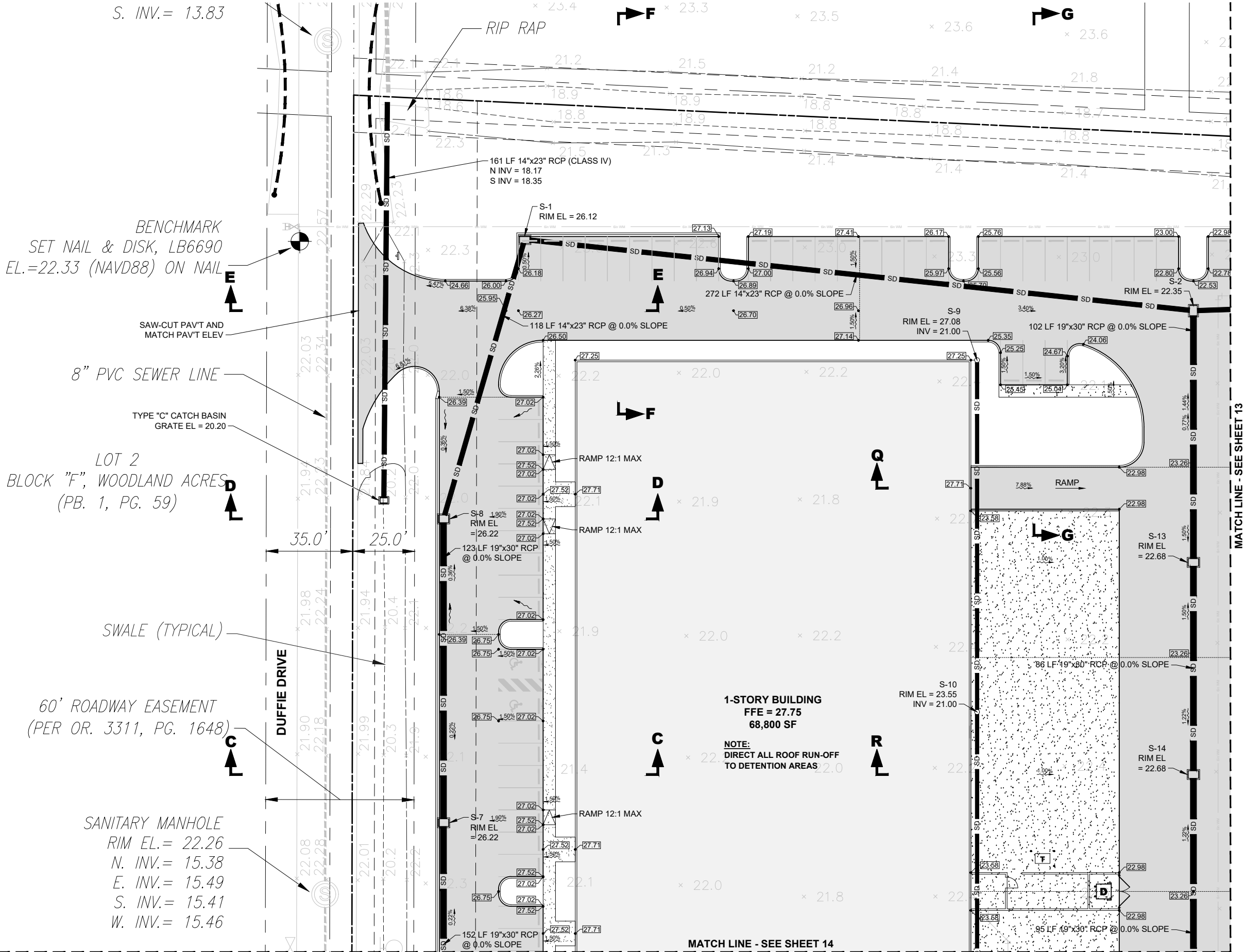
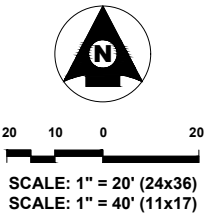
SECTION 14, TOWNSHIP 41 SOUTH, RANGE 23 EAST

PRELIMINARY PLAN ONLY
NOT FOR CONSTRUCTION
July 25, 2024

DATE:	JULY 2024	SURVEY DATUM	NAVD 88
PROJECT No.:	24-0710	SHEET:	11

FLORIDA

Bar Measures 1 inch



7/25/2024 1:13:38 PM - P:124-0710 - ACC LOT 45 & 46 WAREHOUSE (CORRA) DESIGN/ADDI PLAN SET/12-15 - DRAIN-GRADING PLAN.DWG - DEV GANESH

SED Southwest Engineering & Design
 25450 Airport Road, Suite B
 Punta Gorda, Florida 33950
 Tel. (941) 637-9655 | Fax (941) 637-1149
 www.sedfl.com
 Certificate of Authorization No. 26551

REV.	DATE	BY	CK'D	DESCRIPTION

Project No.:	24-0710
Project Manager:	GWB
Project Engineer:	GWB
Project Designer:	NJB
Checked By:	-
Approved By:	GWB

8360 NORTHUP DR, LLC
DRAINAGE AND GRADING PLAN

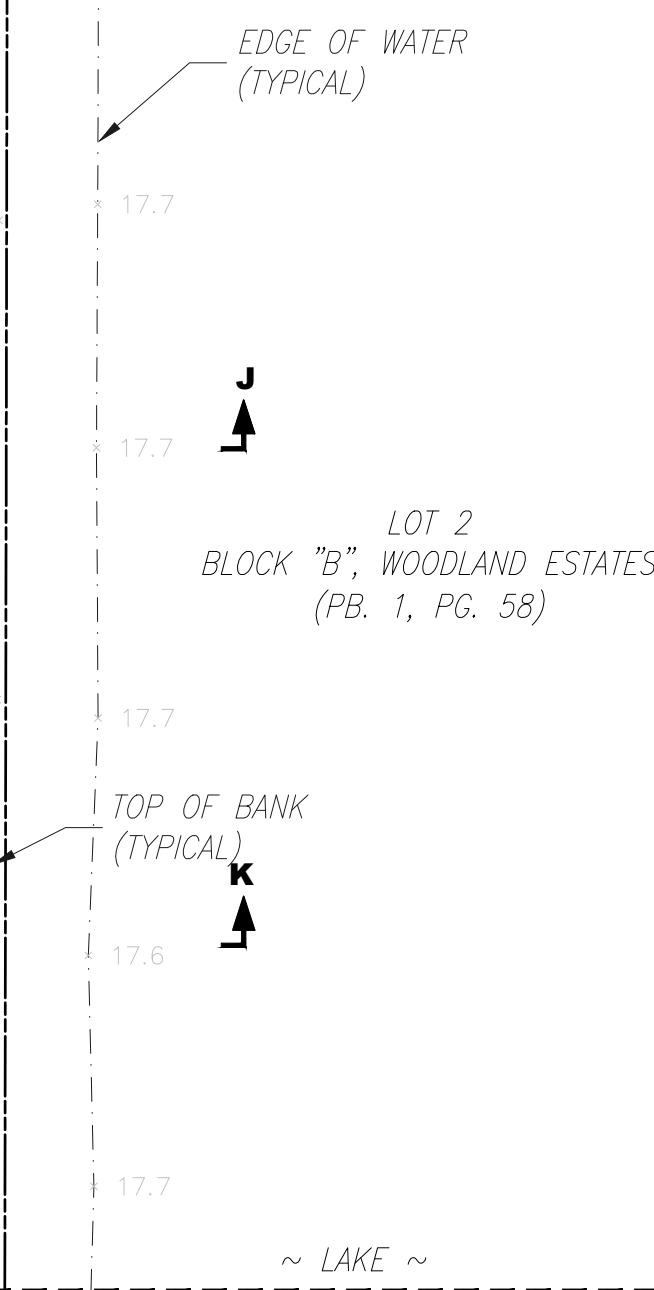
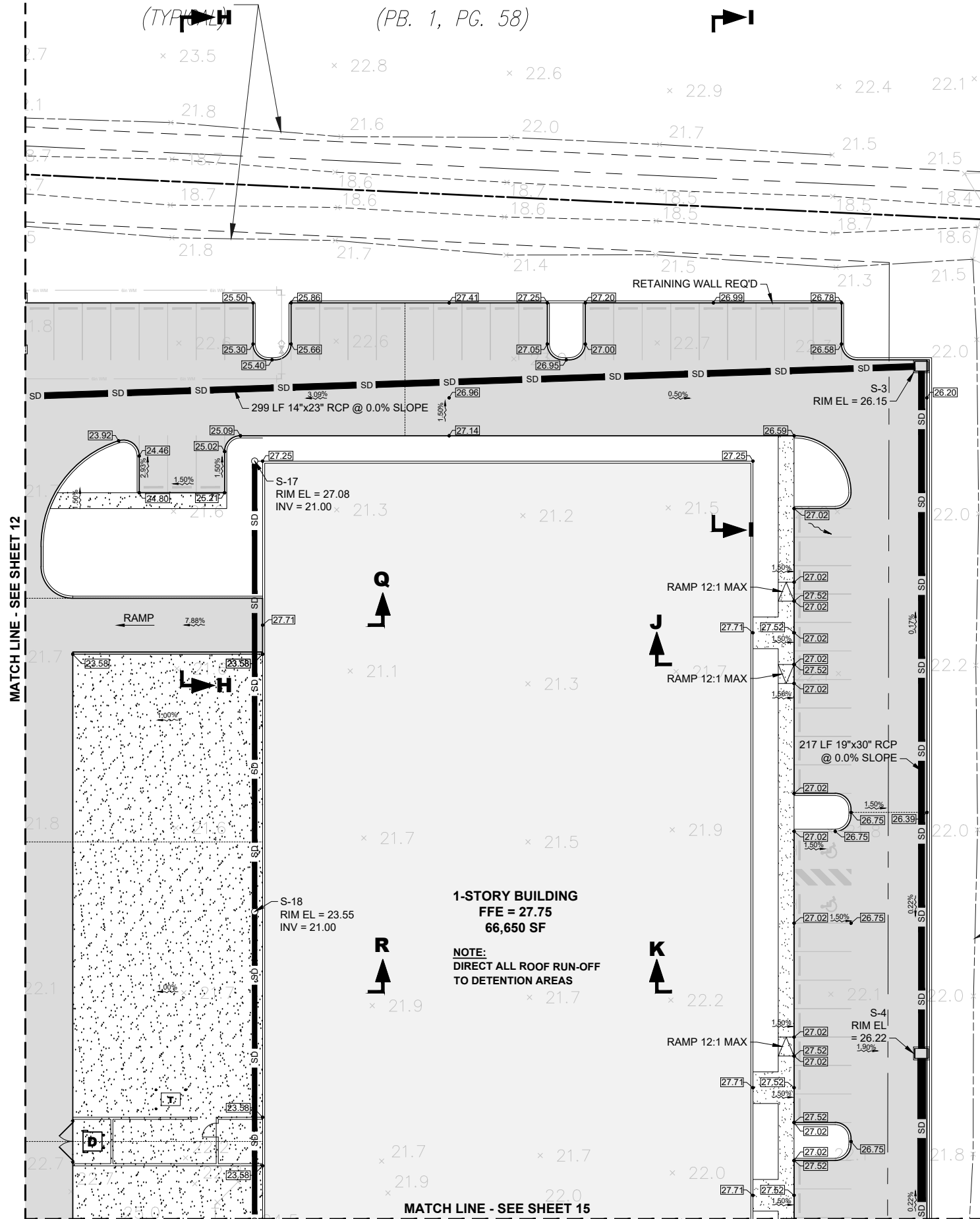
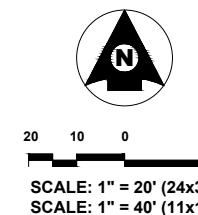
PUNTA GORDA SECTION 14, TOWNSHIP 41 SOUTH, RANGE 23 EAST FLORIDA

PRELIMINARY PLAN ONLY
NOT FOR CONSTRUCTION
 July 25, 2024

DATE:	JULY 2024	SURVEY DATUM	NAVD 88
PROJECT No.:	24-0710	SHEET:	12

Bar Measures 1 inch

(TYPICAL) (PB. 1, PG. 58)



MATCH LINE - SEE SHEET 12

MATCH LINE - SEE SHEET 15

1-STORY BUILDING
FFE = 27.75
66,650 SF

NOTE:
DIRECT ALL ROOF RUN-OFF
TO DETENTION AREAS

SED
Southwest Engineering & Design

25450 Airport Road, Suite B
Punta Gorda, Florida 33950
Tel. (941) 637-9655 | Fax (941) 637-1149
www.sedfl.com
Certificate of Authorization No. 26551

REV.	DATE	BY	CK'D	DESCRIPTION

Project No.:	24-0710
Project Manager:	G W B
Project Engineer:	G W B
Project Designer:	N J B
Checked By:	-
Approved By:	G W B

8360 NORTHUP DR, LLC
DRAINAGE AND GRADING PLAN

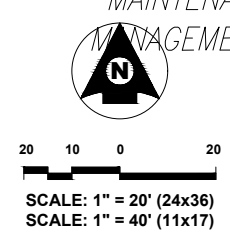
SECTION 14, TOWNSHIP 41 SOUTH, RANGE 23 EAST

PRELIMINARY PLAN ONLY
NOT FOR CONSTRUCTION
July 25, 2024

DATE:	JULY 2024	SURVEY DATUM	NAVD 88
PROJECT No.:	24-0710		
SHEET:	13		

7/25/2024 1:13:38 PM P:\24-0710 - ACC LOT 45 & 46 WAREHOUSE (CORRA) DESIGN\ADDIPLAN SET\12-15_DRAIN-GRADING PLAN.DWG - DEV GANESH

50' EASEMENT FOR THE INSTALLATION AND MAINTENANCE OF ROADS, STREETS, STORM WATER MANAGEMENT, UTILITIES AND DRAINAGE (PER DEED)



TOP OF BANK (TYPICAL)
18' ROADWAY PER RECORD PLAT

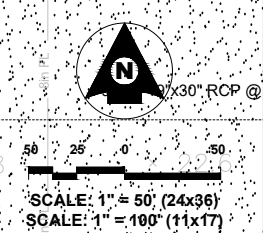
LOT 4
BLOCK "F", WOODLAND ACRES
(PB. 1, PG. 59)

SANITARY MANHOLE
RIM EL. = 22.17
N. INV. = 16.18
E. INV. = 16.32
W. INV. = 16.31

EXIST FH
8" PVC SEWER LINE

158 LF 14"x23" RCP (CLASS IV)
N INV = 18.43
S INV = 18.24

MATCH LINE - SEE SHEET 12
1-STORY BUILDING
FFE = 27.75
68,800 SF
NOTE:
DIRECT ALL ROOF RUN-OFF
TO DETENTION AREAS



STORMWATER DETENTION
AREA = 36,634 SQ FT
TOB = 22.90, BOTTOM EL 20.40,
ESHWT = 19.35
DHW = ? 25YR/24HR
DHW = ? 100YR/24HR

FOUND ALUMINUM
PCP DISK, LB6753
BENCHMARK

EDGE OF WATER
(TYPICAL)

LOT 1
BLOCK "K" WOODLAND ACRES

7/25/2024 1:31:40 PM - P:124-0710 - ACC LOT 45 & 46 WAREHOUSE (CORRA) DESIGN/ADDI PLAN SET/12-15_DRAIN-GRADING PLAN.DWG - DEV GANESH

SED Southwest Engineering & Design
25450 Airport Road, Suite B
Punta Gorda, Florida 33950
Tel. (941) 637-9655 | Fax (941) 637-1149
www.sedfl.com
Certificate of Authorization No. 26551

REV.	DATE	BY	CK'D	DESCRIPTION

Project No.:	24-0710
Project Manager:	G W B
Project Engineer:	G W B
Project Designer:	N J B
Checked By:	-
Approved By:	G W B

**8360 NORTHUP DR, LLC
DRAINAGE AND GRADING PLAN**

**PRELIMINARY PLAN ONLY
NOT FOR CONSTRUCTION**
July 25, 2024

DATE:	JULY 2024	SURVEY DATUM	NAVD 88
PROJECT No.:	24-0710	SHEET:	14

PUNTA GORDA SECTION 14, TOWNSHIP 41 SOUTH, RANGE 23 EAST FLORIDA

