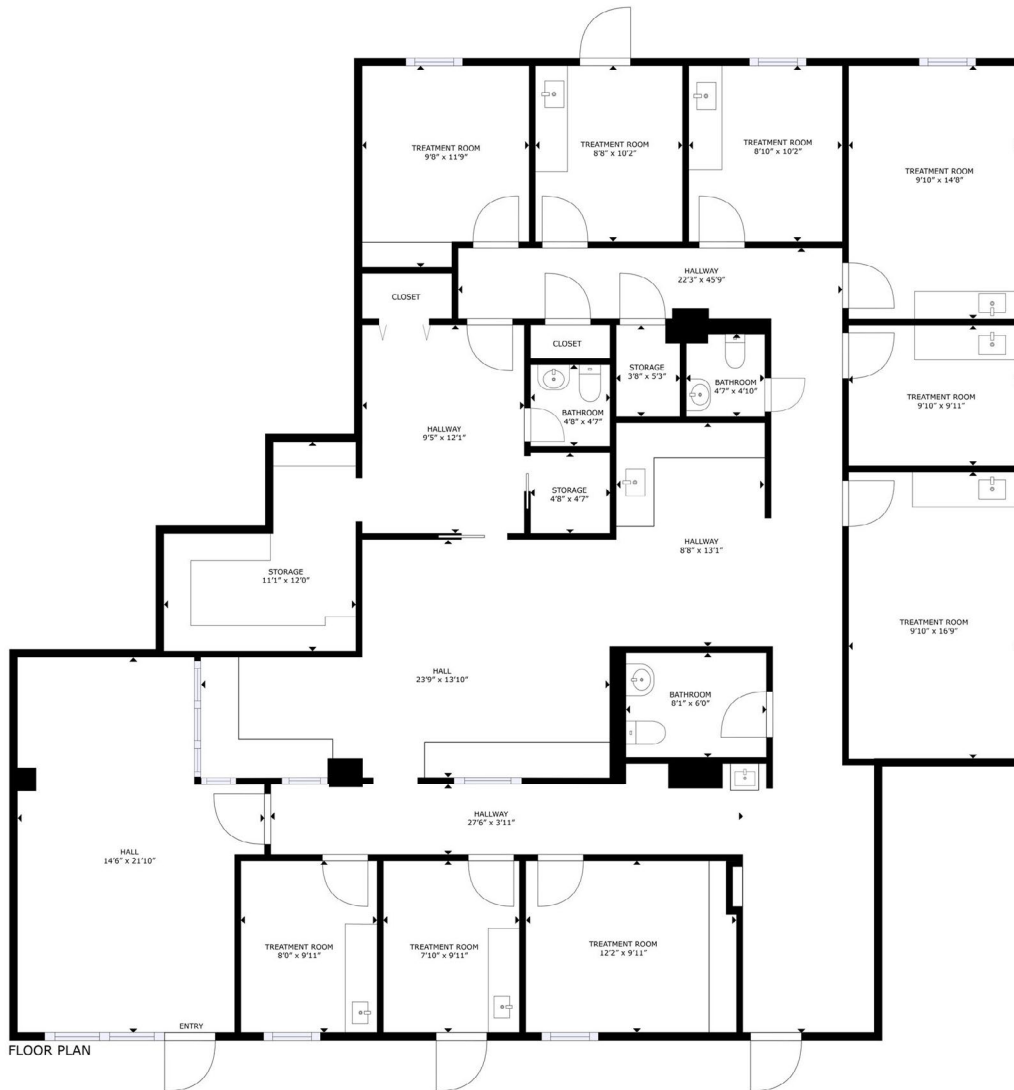


# SUITE PLAN

## AUGUSTA PROFESSIONAL OFFICE BUILDING I

820 St. Sebastian Way  
Augusta, GA 30901

**Suite 1B**  
2,889 USF



## For Leasing Information

Contact Regional Leasing Director  
Erreca White at (706) 373-2889  
[erreca.white@Lillibridge.com](mailto:erreca.white@Lillibridge.com)

