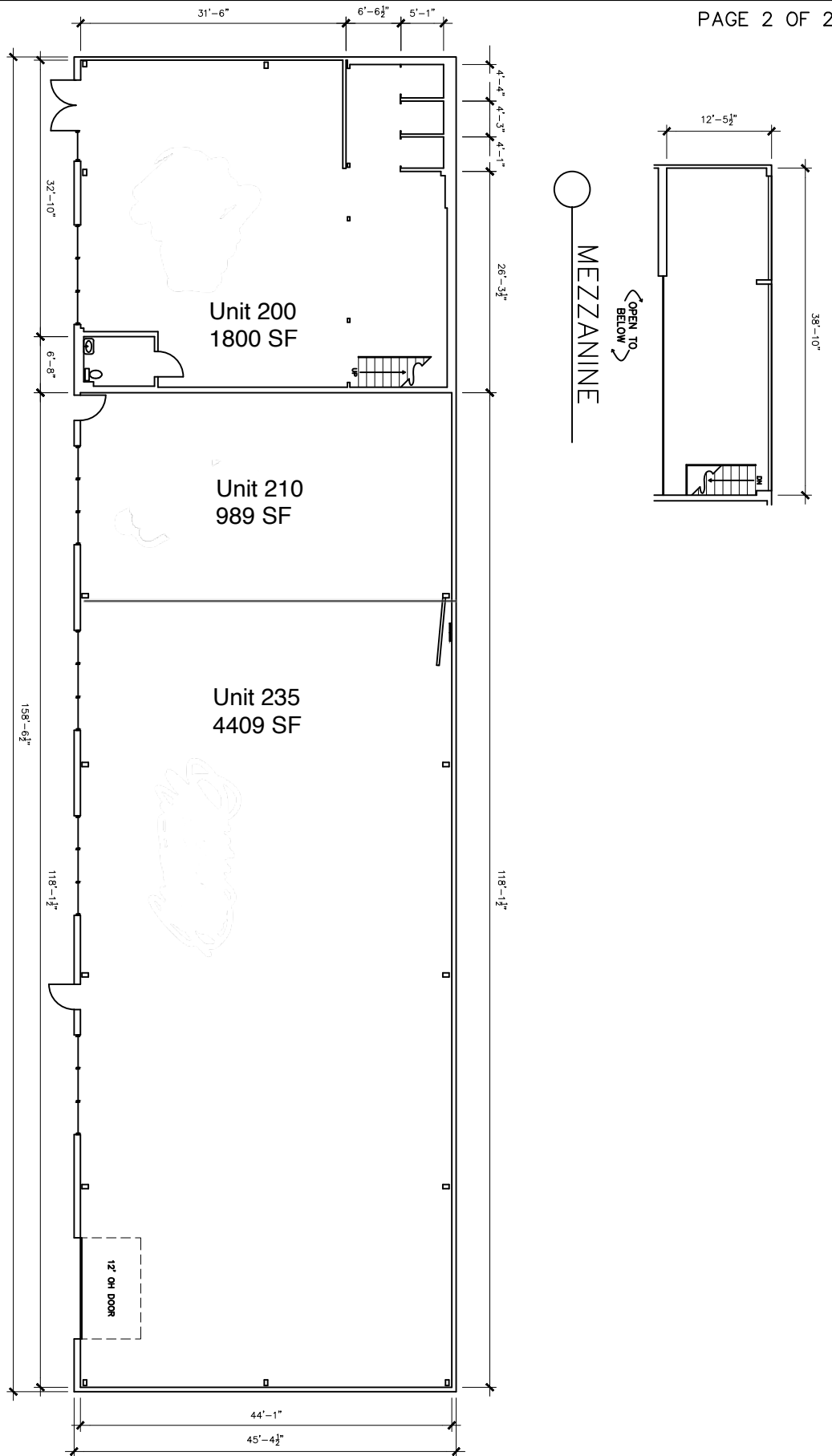


NOTE:

DIMENSIONS ARE TO SHOW ROOM SIZES.
SQUARE FOOTAGE CALCULATIONS ARE
DONE TO BOMA STANDARDS.



NOT TO SCALE

Drawing for:

Avison Young
515 Congress Ave.
Ste. 1175
Austin, TX 78701

BUILDING C/D
2324 S. LAMAR BLVD.
AUSTIN, TEXAS
GROSS LEASABLE AREA: 7,711 S.F.

THE MEASUREMENTS, FLOOR PLANS,
AND CALCULATIONS ARE ACCURATE
USING BOMA MEASUREMENT
STANDARDS FOR RETAIL BUILDINGS.
ANSI/BOMA Z65.5 - 2020
Project No.: 2434.06
Date: May 28, 2024
©2024

DIMENSIONS
FLOOR PLANS
Austin, Texas
dimensionsfloorplans.com
Phone: (512)342-0114