



CENTRAL FLORIDA
RESOURCE CENTER

5700 - 5712 Dot Com Court | Oviedo, Florida

± 7,232 - 14,148 SF Available



OVIDEO, FL

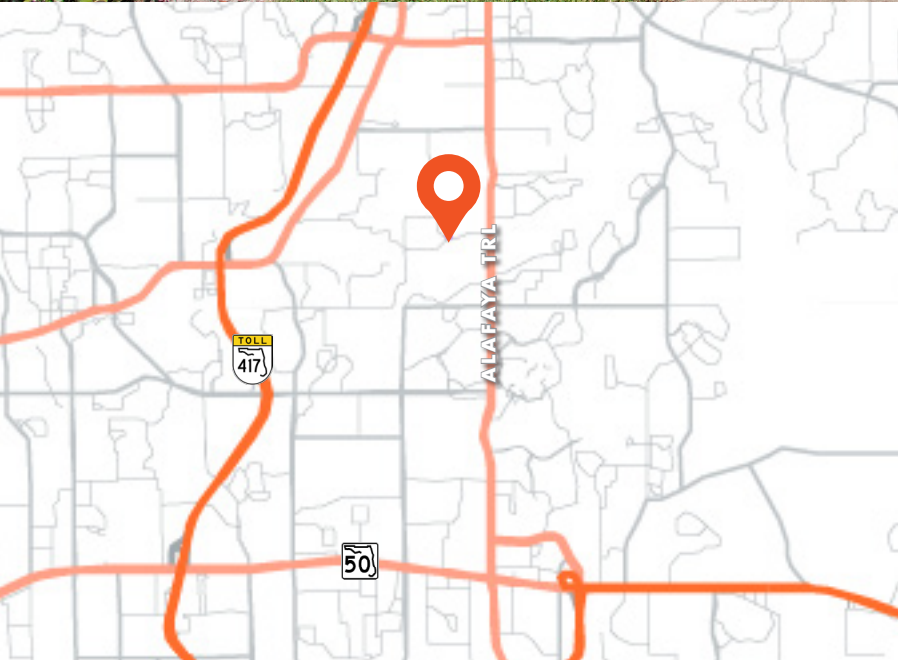
CENTRAL FLORIDA RESOURCE CENTER

INDUSTRIAL SPACE

Central Florida Resource Center is located in Oviedo, a premier Orlando suburb that offers close proximity to UCF, Orlando Research Park, and the Downtown Core.

PROPERTY FEATURES

- Convenient & Safe Parking
- Near UCF and Orlando Research Park
- Easily Accessible



FOR MORE INFORMATION, PLEASE CONTACT:

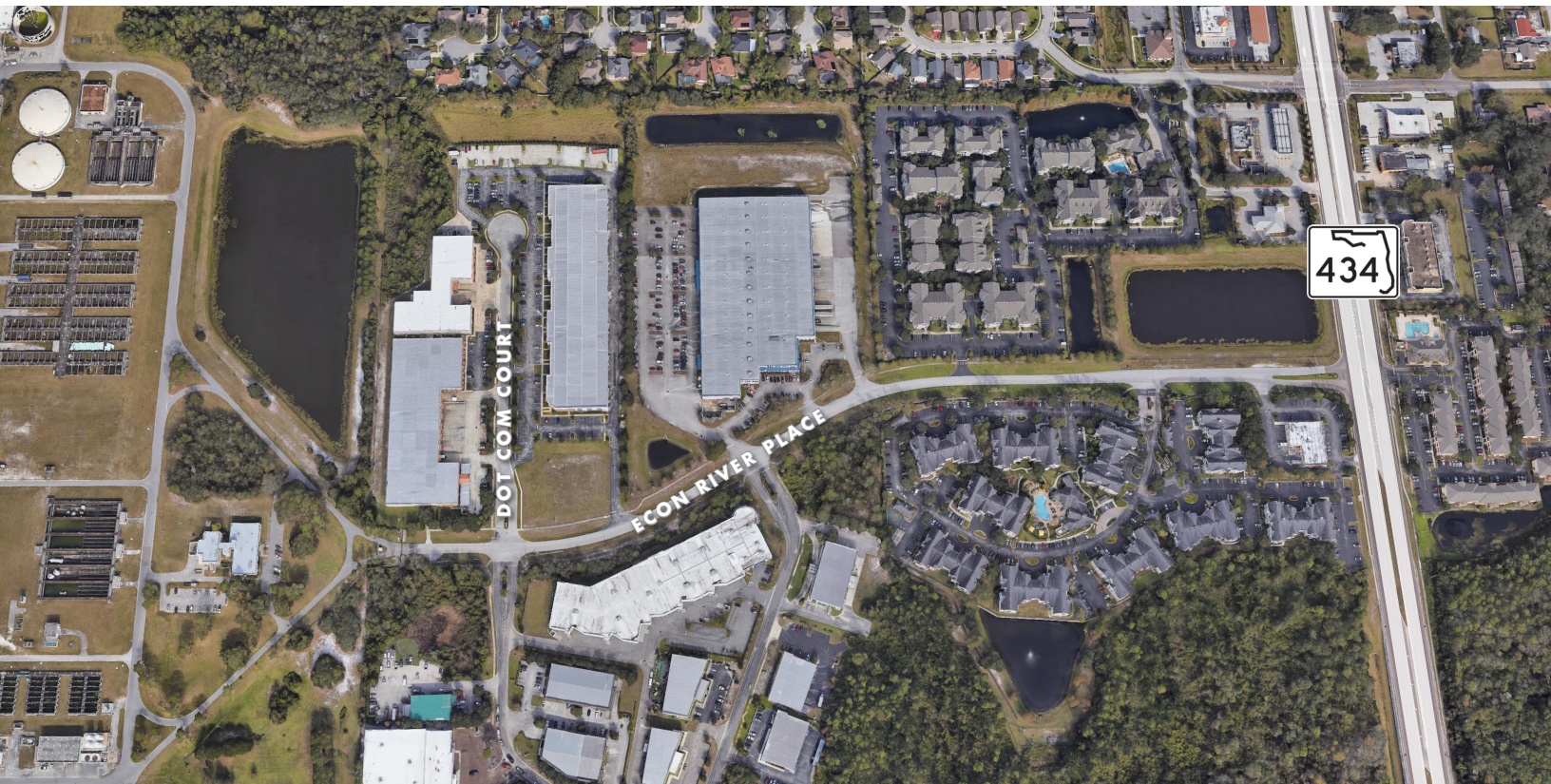
JOHN PIETKIEWICZ | 407.540.2793
john.pietkiewicz@foundrycommercial.com
Licensed Real Estate Broker

JOEY WOODMAN | 407.748.5888
joey.woodman@foundrycommercial.com
Licensed Real Estate Broker

FOUNDRY
COMMERCIAL

Although the information contained herein was provided by sources believed to be reliable, Foundry Commercial makes no representation, expressed or implied, as to its accuracy and said information is subject to errors, omissions or changes.

foundrycommercial.com



	5700 Dot Com Ct.	5707 Dot Com Ct.	5712 Doc Com Ct.
RSF	71,502	92,695	34,108
YEAR BUILT	2003	2006	2008
OFFICE FINISH	20%	10%	10%
LOADING	Front-Load	Rear-Load	Front-Load
CLEAR HEIGHT	28'	28'	28'
LOADING DOORS	7	14	2
CAR PARKING	120 spaces	128 spaces	48 spaces

FOR MORE INFORMATION, PLEASE CONTACT:

JOHN PIETKIEWICZ | 407.540.2793
 john.pietkiewicz@foundrycommercial.com
 Licensed Real Estate Broker

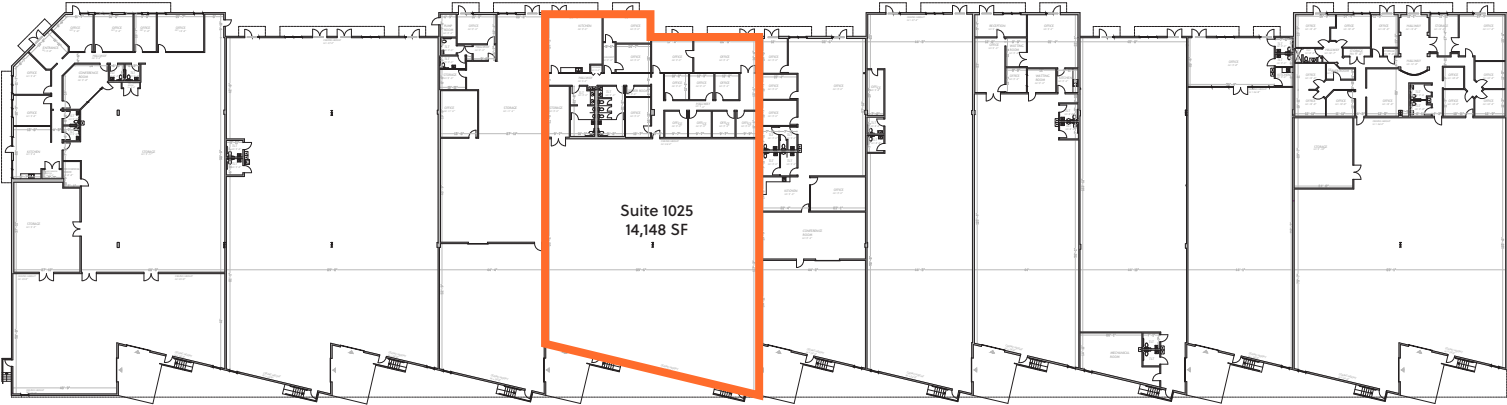
JOEY WOODMAN | 407.748.5888
 joey.woodman@foundrycommercial.com
 Licensed Real Estate Broker



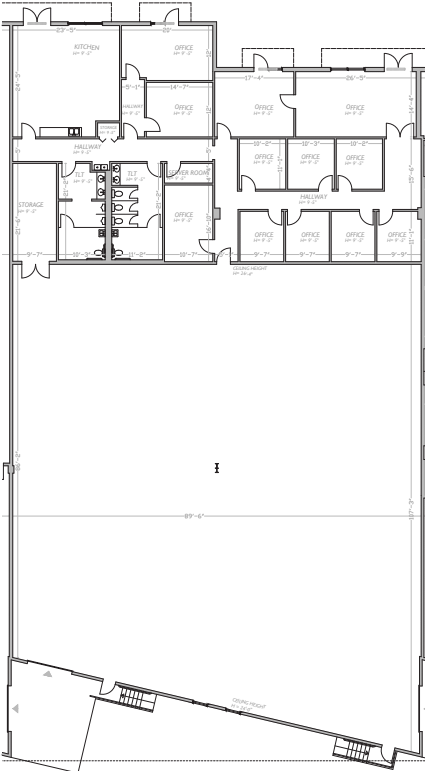
Although the information contained herein was provided by sources believed to be reliable, Foundry Commercial makes no representation, expressed or implied, as to its accuracy and said information is subject to errors, omissions or changes.

FLOOR PLAN

5707 Dot Com Ct.
Suite 1025 | 14,148 SF Available 9/1/2026



Suite 1025 | 14,148 SF



FOR MORE INFORMATION, PLEASE CONTACT:

JOHN PIETKIEWICZ | 407.540.2793
john.pietkiewicz@foundrycommercial.com
Licensed Real Estate Broker

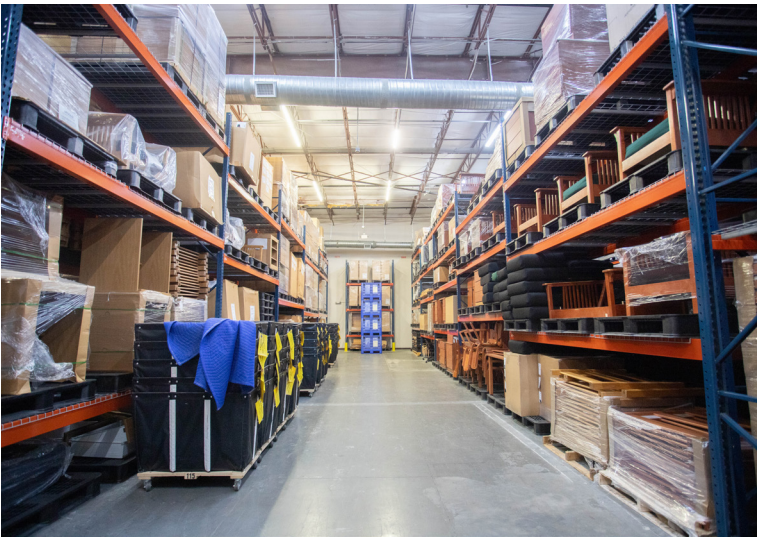
JOEY WOODMAN | 407.748.5888
joey.woodman@foundrycommercial.com
Licensed Real Estate Broker



Although the information contained herein was provided by sources believed to be reliable, Foundry Commercial makes no representation, expressed or implied, as to its accuracy and said information is subject to errors, omissions or changes.

SUITE 1025 PHOTOS

±7,232 RSF AVAILABLE FOR LEASE



FOR MORE INFORMATION, PLEASE CONTACT:

JOHN PIETKIEWICZ | 407.540.2793
john.pietkiewicz@foundrycommercial.com
Licensed Real Estate Broker

JOEY WOODMAN | 407.748.5888
joey.woodman@foundrycommercial.com
Licensed Real Estate Broker

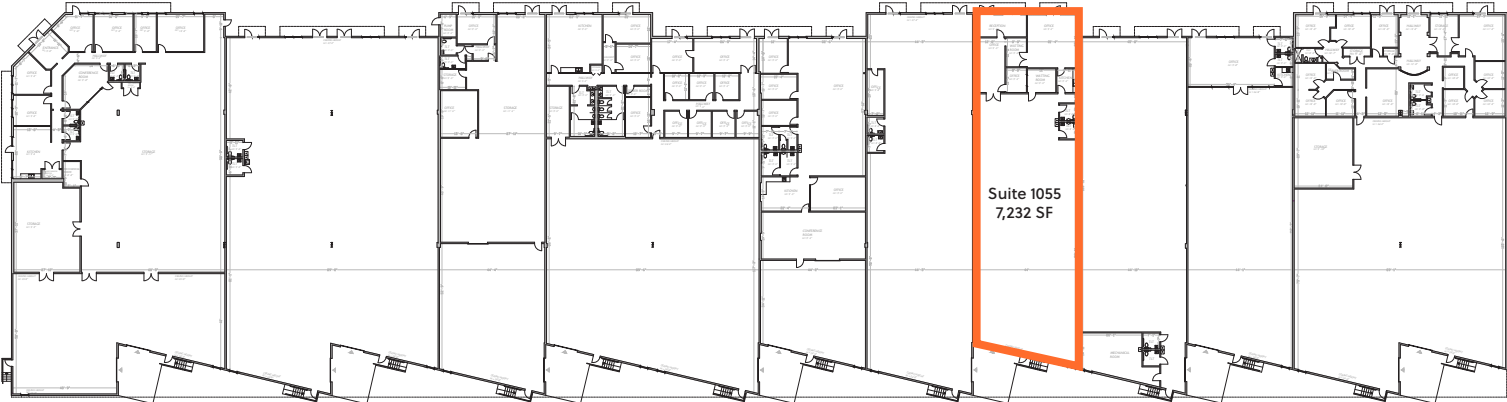
FOUNDRY
COMMERCIAL

Although the information contained herein was provided by sources believed to be reliable, Foundry Commercial makes no representation, expressed or implied, as to its accuracy and said information is subject to errors, omissions or changes.

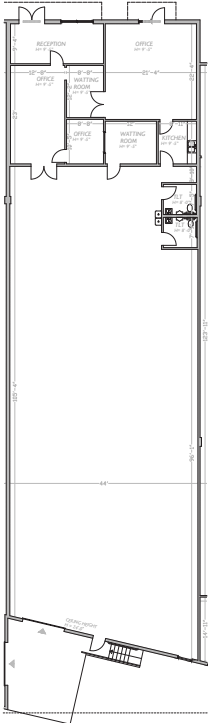
foundrycommercial.com

FLOOR PLAN

5707 Dot Com Ct.
Suite 1055 | 7,232 SF



Suite 1055 | 7,232 SF



FOR MORE INFORMATION, PLEASE CONTACT:

JOHN PIETKIEWICZ | 407.540.2793
john.pietkiewicz@foundrycommercial.com
Licensed Real Estate Broker

JOEY WOODMAN | 407.748.5888
joey.woodman@foundrycommercial.com
Licensed Real Estate Broker



Although the information contained herein was provided by sources believed to be reliable, Foundry Commercial makes no representation, expressed or implied, as to its accuracy and said information is subject to errors, omissions or changes.



FOR MORE INFORMATION, PLEASE CONTACT:

JOHN PIETKIEWICZ | 407.540.2793
john.pietkiewicz@foundrycommercial.com
Licensed Real Estate Broker

JOEY WOODMAN | 407.748.5888
joey.woodman@foundrycommercial.com
Licensed Real Estate Broker

FOUNDRY
COMMERCIAL

Although the information contained herein was provided by sources believed to be reliable, Foundry Commercial makes no representation, expressed or implied, as to its accuracy and said information is subject to errors, omissions or changes.

foundrycommercial.com