

# PARK WEST MULTI-TENANT OFFICE BUILDING

1124 PARK WEST BOULEVARD  
MOUNT PLEASANT, SC 29466

## Lease or Sale

±1,697 - 2,032 RSF  
For Lease

Executive Suites -  
From ±200 RSF  
Available

±6,984 SF  
Class A  
Building  
For Sale



# About the Property

NAI Charleston is pleased to present **1124 Park West Blvd. for lease or for sale**. This multi-tenant office building boasts modern and well-appointed lease options, including a convenient first floor lobby entry suite and a more intimate second floor option. This attractive building is highly visible from well-traveled Park West Blvd. and is ideally located close to retail & lifestyle amenities including Publix, high-end retail, North Mt. Pleasant sports & recreational facilities, and more. This functional space presents a turn-key lease opportunity for any number of professional office users, or an outstanding ownership opportunity for an investor or owner/occupant.

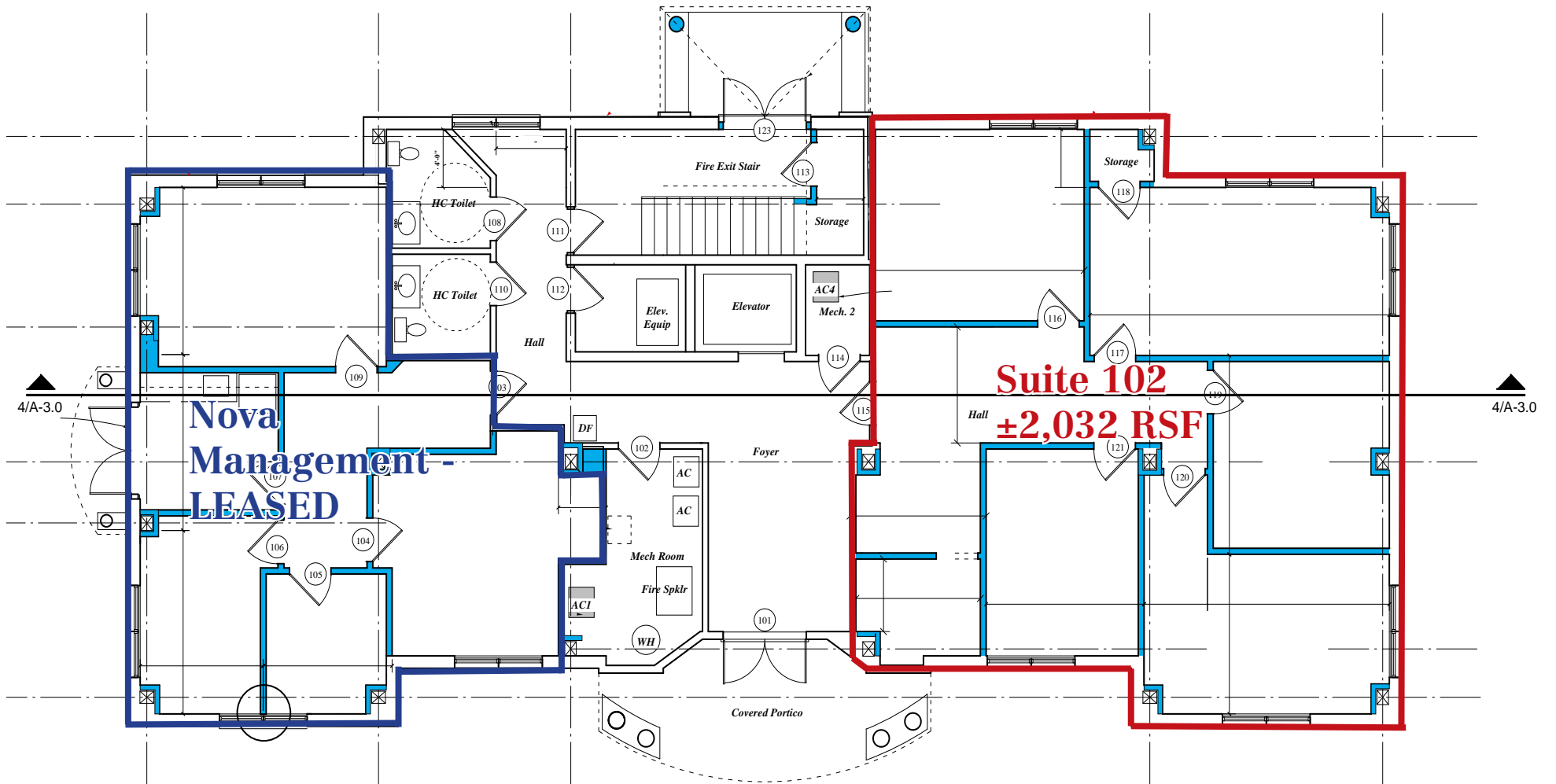
- **Location, Location, Location**  
Outstanding convenience to all North Mt. Pleasant has to offer
- **Versatile Layout**  
High ceilings, glass doors, and well-appointed finishes create a refined, professional environment for your business
- **Move-In Ready**  
Two suites are vacant and ready for immediate occupancy



## Offering Summary

Building Size:	±6,984 SF freestanding office building
Year Built:	2008
Availability:	Move-in ready
Lease Offerings:	Suite 102 - ±2,032 RSF - \$26/SF/yr., NNN (\$4,403/mo.) Suite 205 - ±1,697 RSF - \$26/SF/yr., NNN (\$3,677/mo.) NNN estimate: \$6.75/SF/yr.  Executive Suites from \$850/mo., Full Service
Sale Offering:	\$2,600,000 <i>Contact broker for financials</i>
Parking:	Convenient on-site shared parking
Zoning:	PD - Town of Mt. Pleasant

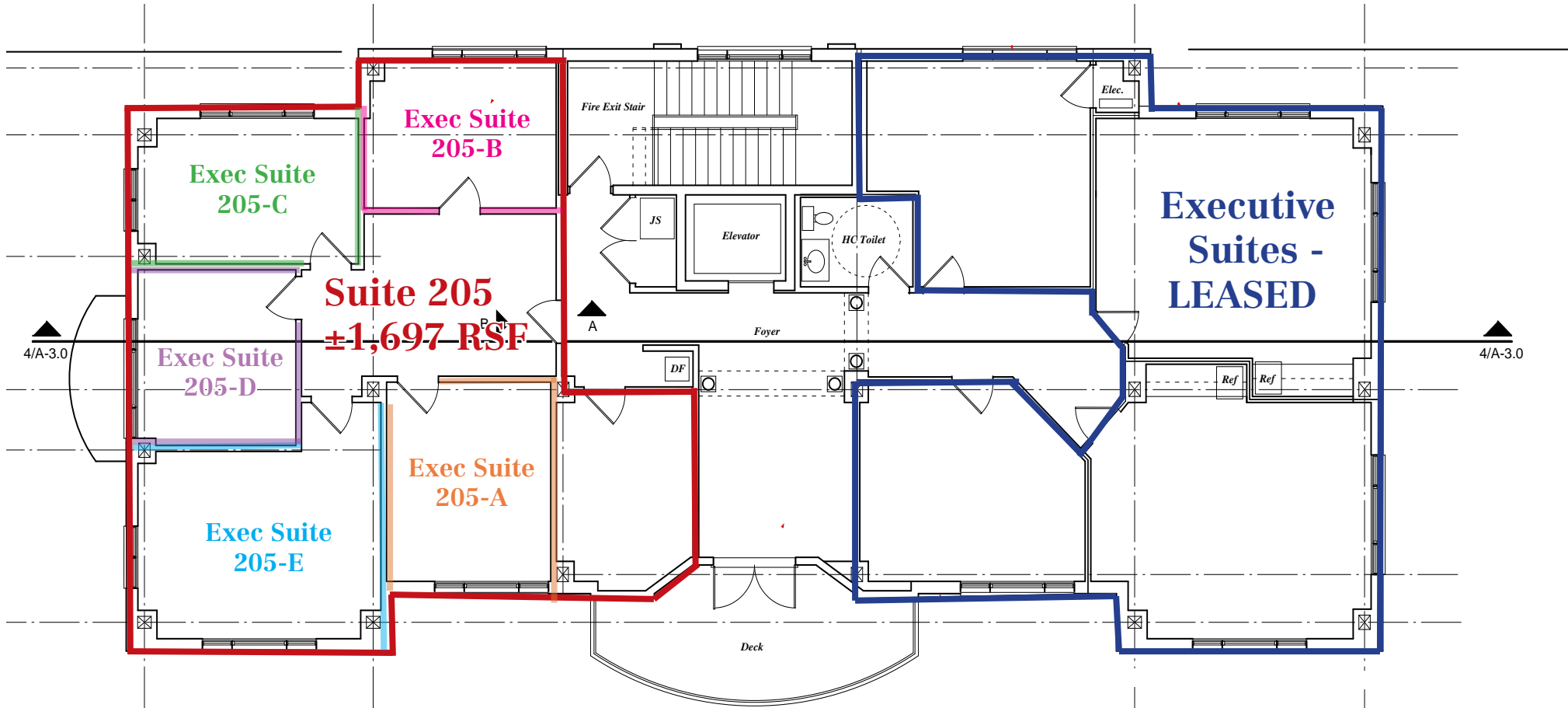
# 1st Floor- Floor Plan



\*Not drawn to scale

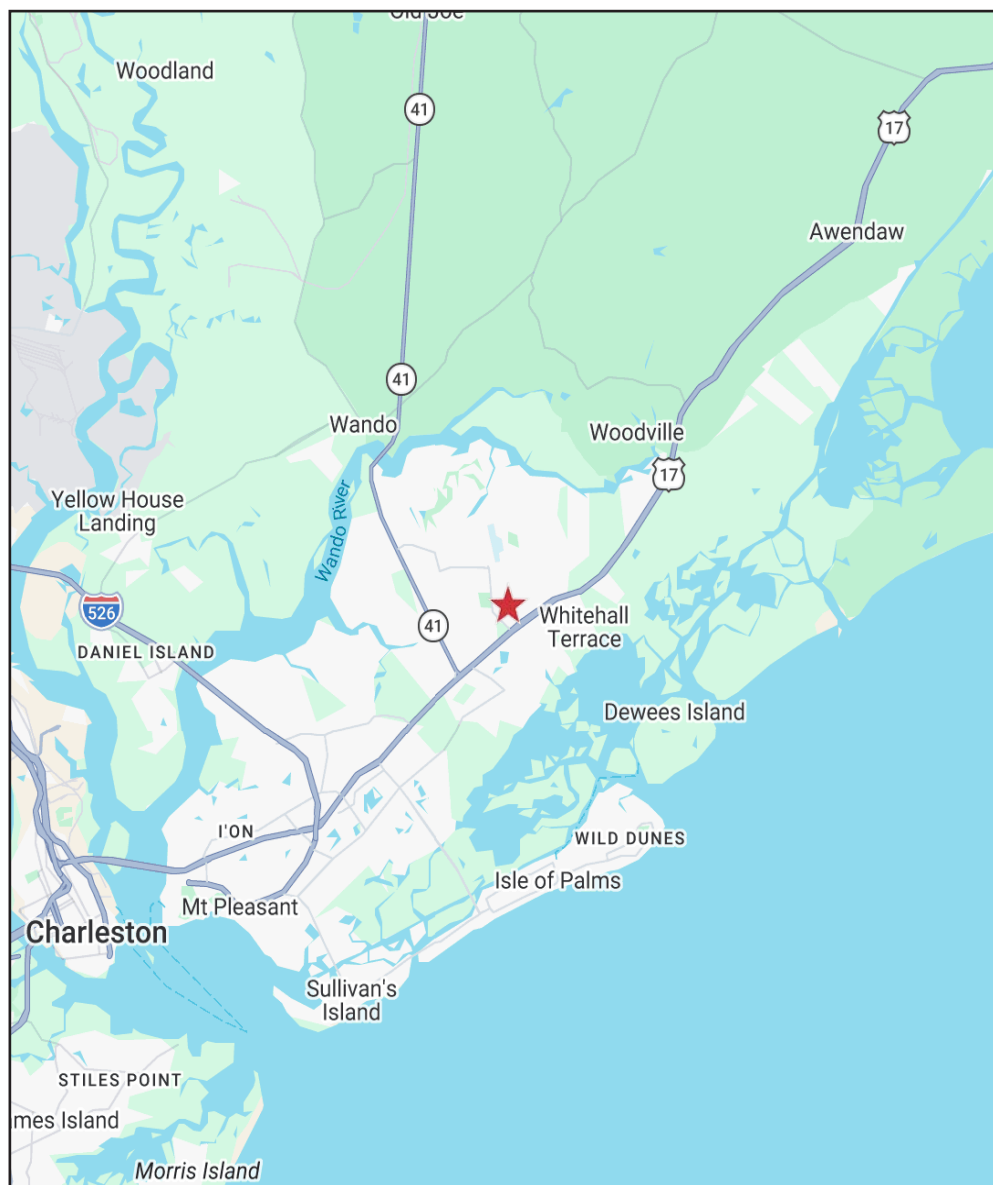
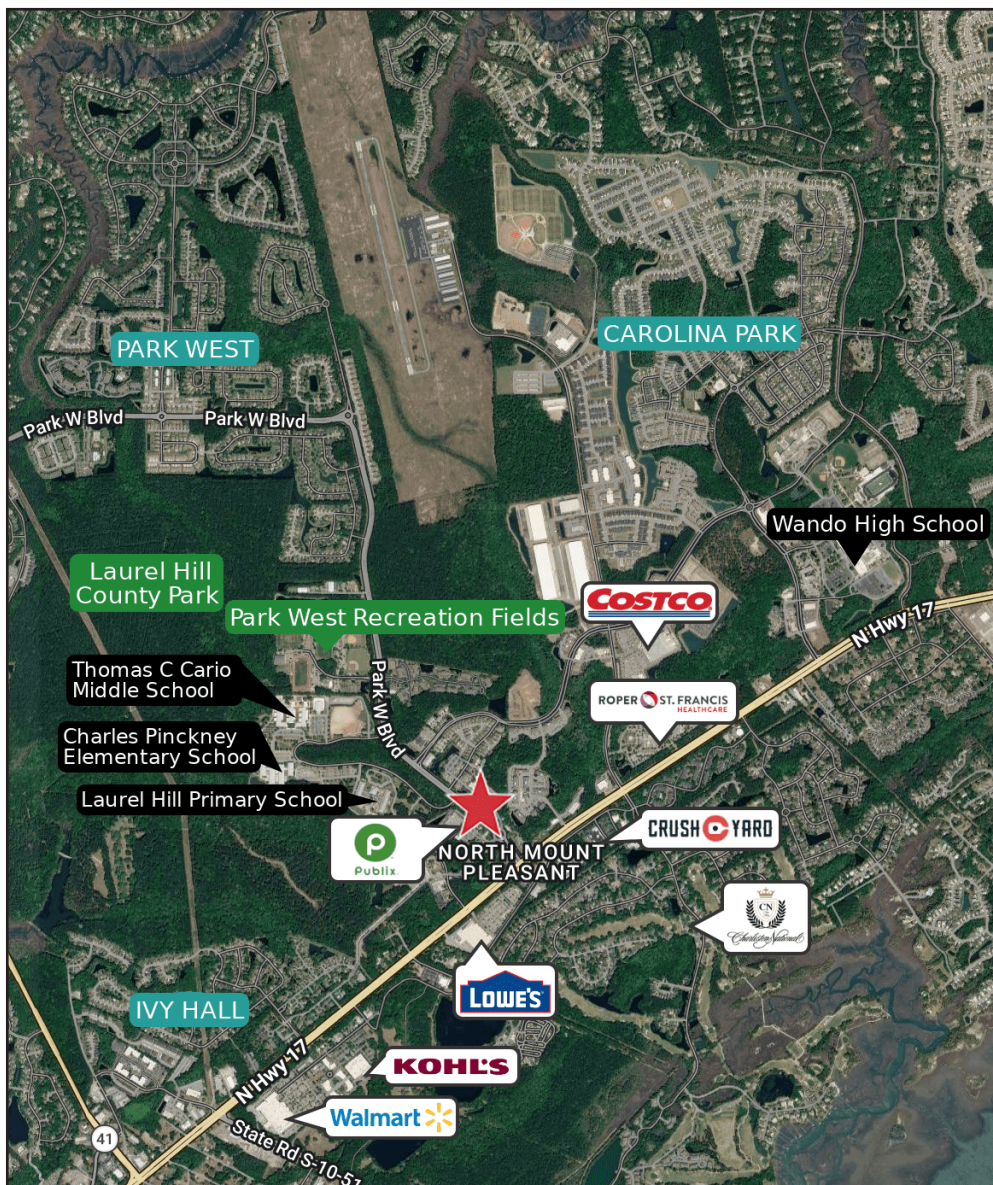
# 2nd Floor- Floor Plan & Rent Table

Suite:	Notes:	Rent:
<b>205</b>	±1,697 SF	\$26/SF, NNN
<b>205-A</b>	Executive	\$850/mo.
<b>205-B</b>	Executive	\$900/mo.
<b>205-C</b>	Executive	\$950/mo.
<b>205-D</b>	Executive	\$900/mo.
<b>205-E</b>	Executive	\$950/mo.



\*Not drawn to scale

# Area Maps



## Additional Photos



Suite 102 - Kitchen



Suite 102



Suite 102 - Lobby



Lobby