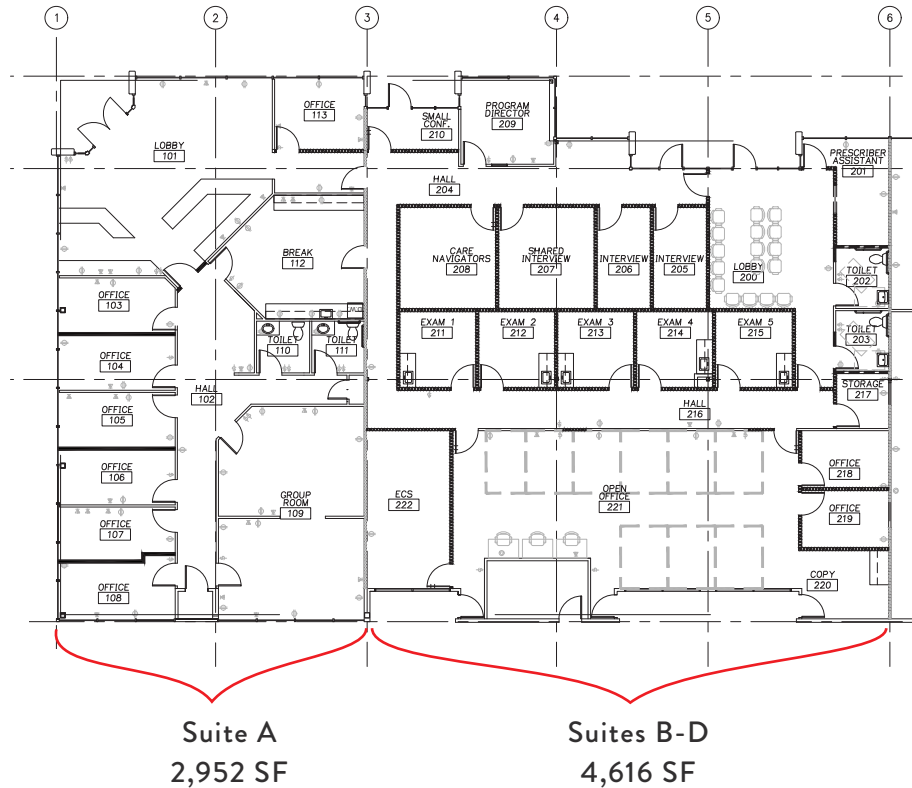


**7,568 SF OFFICE SPACE AVAILABLE
BUILDING 30, SUITES A-D**

11719 NE 95TH STREET, SUITES A-D, VANCOUVER, WA 98682



SUITES A-D

HIGHLIGHTS & FEATURES

- 7,568 SF Office Space - Potential to be Subdivided
- Divisible to Suite A: 2,952 SF & Suites B-D: 4,616 SF
- Multiple Private Offices, Conference Rooms & Restrooms
- High Visibility from NE 117th Ave.
- Located at Signalized Intersection
- On-Site Property Management
- Restaurants and Retail Amenities nearby: Los Jalapenos, Columbia Credit Union, Papa John’s Pizza, Chevron, Seize the Bagel & Many More

Available: Now



paddencp.com

OWNED & MANAGED BY:



Columbia Commercial
Commercial Leasing | Sales | Property Management



WESTCORE

NOW AVAILABLE! BUILDING 30, SUITES A-D

11719 NE 95th Street, Suites A-D, Vancouver, WA 98682



LEASING CONTACTS

Coleman Brown, CCIM, Principal Broker
Columbia Commercial, LLC
Coleman@CCPprop.com
360.952.4758

paddencp.com



OWNED & MANAGED BY:



Columbia Commercial
Commercial Leasing | Sales | Property Management



WESTCORE