

# RENO AIRCENTER BUILDING 8

AIRPORT SUBMARKET

4828-4832 Longley Lane,  
Reno, NV 89502



FOR LEASE

±10,533 SF



LEASED BY

Colliers

# RENO AIRCENTER BUILDING 8

AIRPORT SUBMARKET

4823-4832 Longley Lane  
Reno, NV 89502

## BUILDING SPECIFICATIONS

Lease Rate Negotiable

Est. OPEX \$0.20/SF

Available Space 10,533 SF

Office Space 2,931 SF

Dock-High Doors/Drive-In Doors 6 Dock, 1 Drive-In

Clear Height 18'

Sprinklers .33/3,000

Power 600 AMP, 480/277 volts, 3-phase

Built 1986

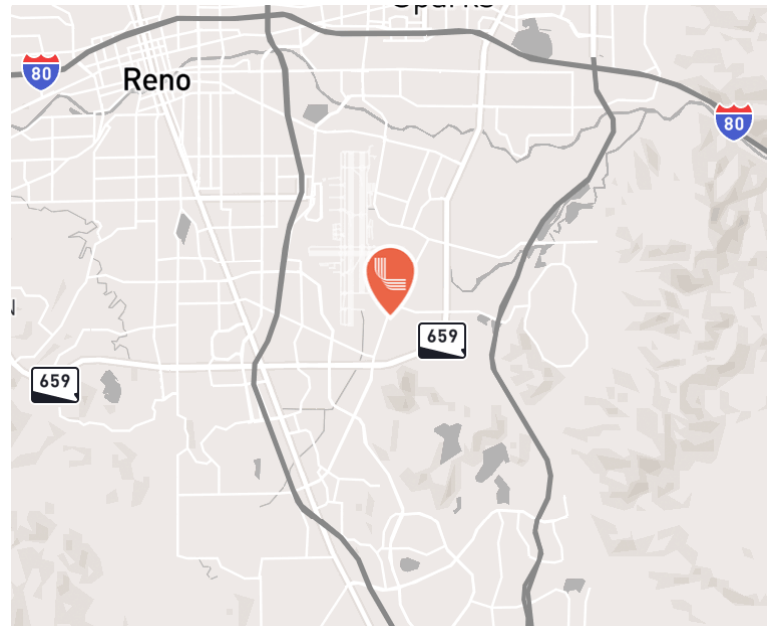
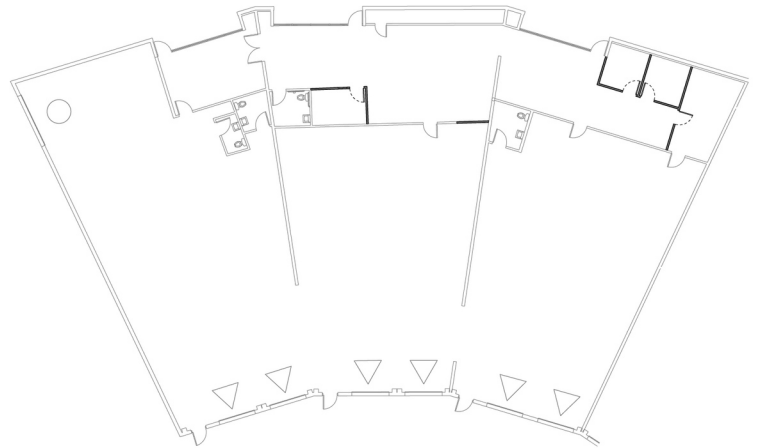
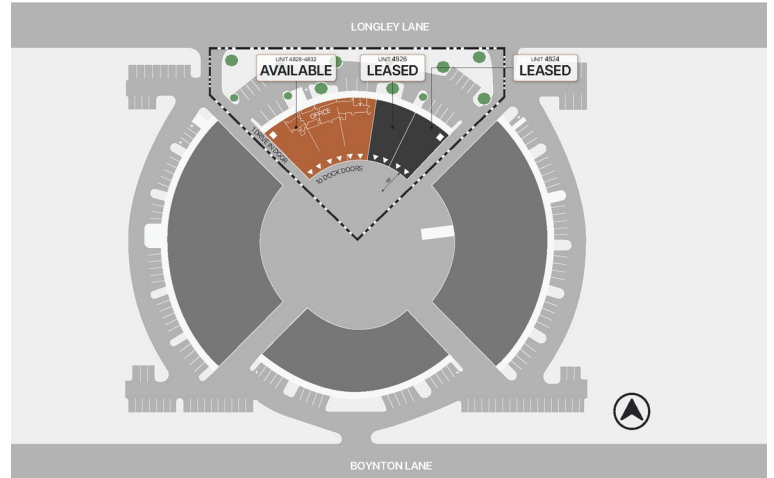
Located in Reno's Airport submarket, 4828-4832 Longley Lane is a professionally managed facility built in 1986. Includes 18' clear height, six dock-high door, one drive-in door, 2,931 SF of office space, and a .33/3,000 sprinkler rating.

FOR LEASE

±10,533 SF

Steve Kucera, SIOR, CCIM  
steve.kucera@colliers.com  
(775) 823-4665  
NV Lic. # S.0172550

Makenna Backstrom  
makenna.backstrom@colliers.com  
(775) 823-6622  
NV Lic. # S.0194236



This is not an offer or acceptance of an offer to lease space. A lease will only be offered or made in a written agreement signed by landlord. No representation or warranty of any kind is made by landlord unless set forth in a written definitive lease executed by the landlord.

AIRPORT SUBMARKET