



# 380 Yonge Street TORONTO, ONTARIO

**CORY ROSEN\***  
SENIOR VICE PRESIDENT  
(416) 523-7749  
CROSEN@CUBECOM.CA

**COOPER BLUME**  
SALES REPRESENTATIVE  
C: 416-566-8217  
E: CBLUME@CUBECOM.CA

Cubecom Commercial Realty Inc. Brokerage | [www.cubecom.ca](http://www.cubecom.ca)

**IR TEAM** | **CUBECOM**  
FULL SERVICE REALTY

This disclaimer shall apply to Cubecom Commercial Realty Inc. Brokerage, and to all other divisions of the Corporation; to include all employees and independent contractors ("Cubecom"). The information set out herein, including, without limitation, any projections, images, opinions, assumptions and estimates obtained from third parties (the "Information") has not been verified by Cubecom, and Cubecom does not represent, warrant or guarantee the accuracy, correctness and completeness of the Information. Cubecom does not accept or assume any responsibility or liability, direct or consequential, for the information or the recipient's reliance upon the Information. The recipient of the Information should take such steps as the recipient may deem necessary to verify the Information prior to placing any reliance upon the Information. The Information may change and any property described in the information may be withdrawn from the market at any time without notice or obligation to the recipient from Cubecom. All Rights Reserved. \*Sales Representative | Broker\*\*

# 380 Yonge Street TORONTO, ONTARIO

380 Yonge Street sits at an iconic corner in downtown Toronto. Surrounded by dense residential, retail, and institutional uses, this high-exposure landmark location delivers unmatched foot traffic and connectivity in the Toronto's prime Yonge Street Corridor.

## MAIN LEVEL:

~ 3,370 SF

1st Floor: 3,370 SF

Mezzanine Level 699 SF + Full Basement

Net Rent: Contact Listing Broker

TMI: \$49.00/sf (Estimated 2026)

FOR LEASE

## SECOND FLOOR:

3,780 SF

Net Rent: Contact Listing Broker

TMI: \$24.90/sf (Estimated 2026)

Availability: Immediate

FOR LEASE



Cubecom Commercial Realty Inc. Brokerage | [www.cubecom.ca](http://www.cubecom.ca)

This disclaimer shall apply to Cubecom Commercial Realty Inc. Brokerage, and to all other divisions of the Corporation; to include all employees and independent contractors ("Cubecom"). The information set out herein, including, without limitation, any projections, images, opinions, assumptions and estimates obtained from third parties (the "Information") has not been verified by Cubecom, and Cubecom does not represent, warrant or guarantee the accuracy, correctness and completeness of the Information. Cubecom does not accept or assume any responsibility or liability, direct or consequential, for the Information or the recipient's reliance upon the Information. The recipient of the Information should take such steps as the recipient may deem necessary to verify the Information prior to placing any reliance upon the Information. The Information may change and any property described in the Information may be withdrawn from the market at any time without notice or obligation to the recipient from Cubecom. All Rights Reserved. \*Sales Representative | Broker\*



# Demographic



## POPULATION\*

0-1KM 69,329  
0-3KM 376,567  
0-5KM 662,198



## DAYTIME POPULATION\*

0-1KM 260,975  
0-3KM 900,913  
0-5KM 1,136,632



## AVG. HOUSEHOLD INCOME\*

0-1KM \$77,734  
0-3KM \$124,754  
0-5KM \$130,549



## MEDIAN AGE\*

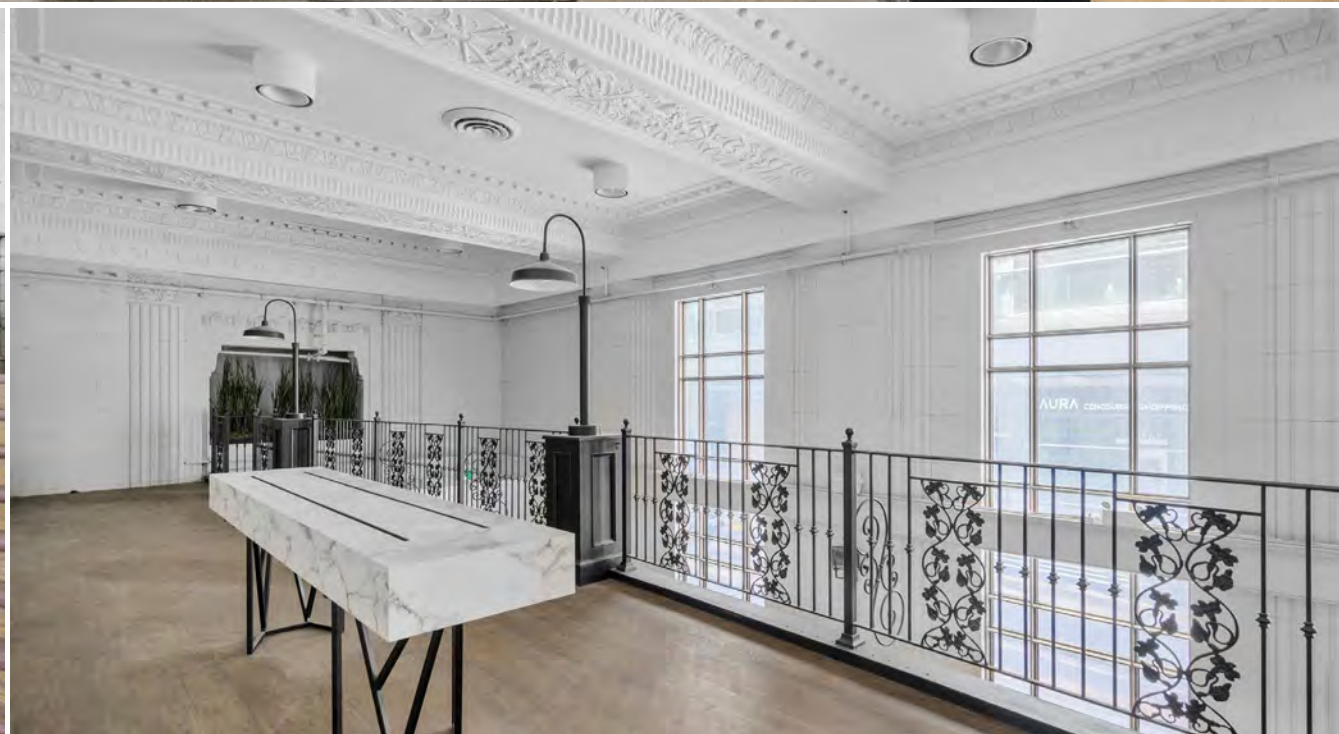
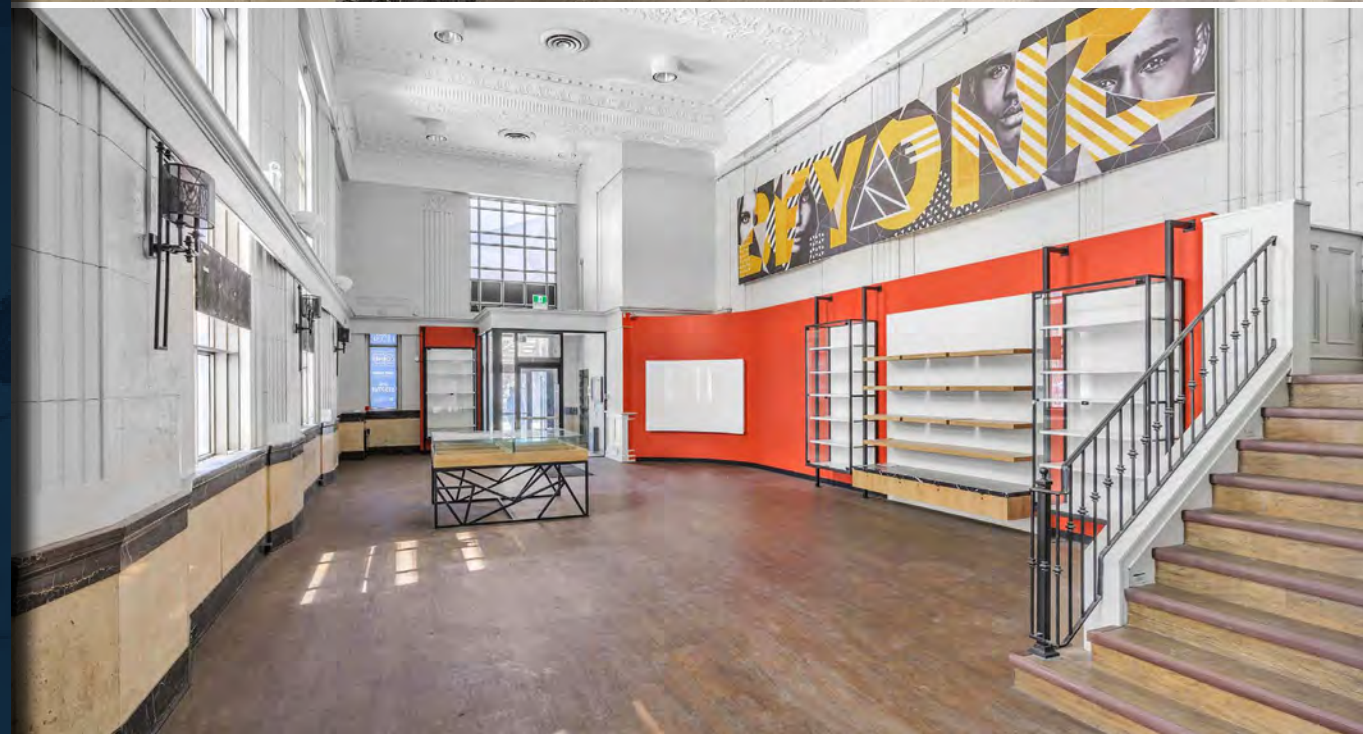
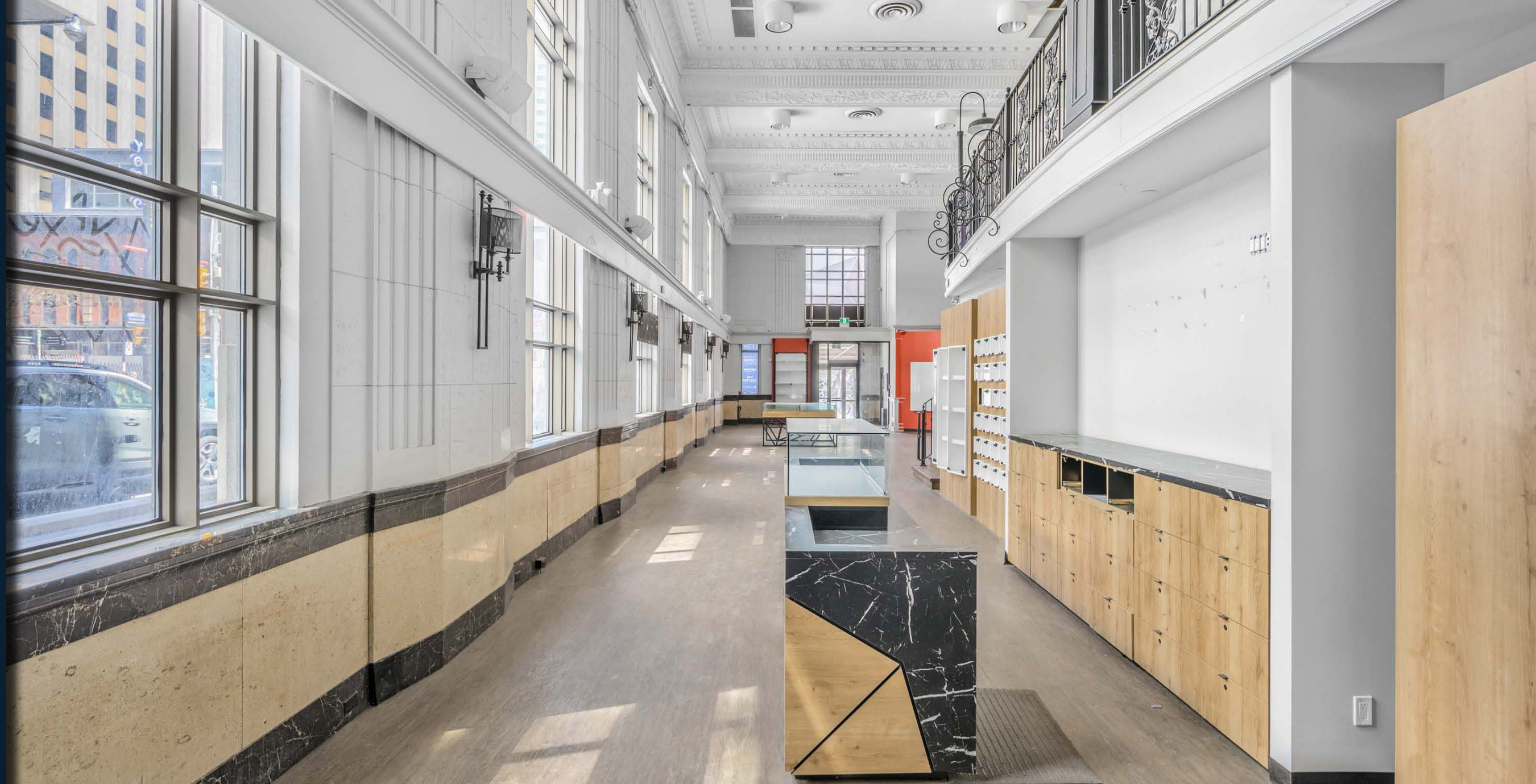
0-1KM 35.7  
0-3KM 36.9  
0-5KM 37.9

\*CoStar



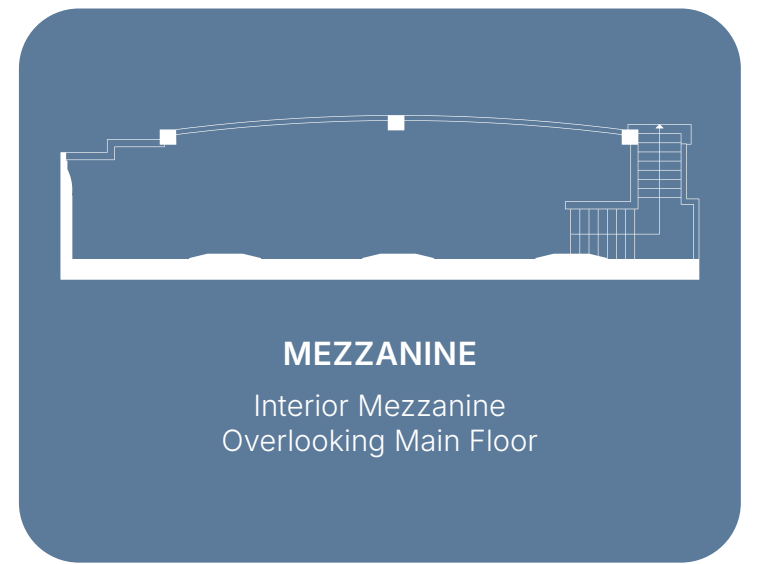
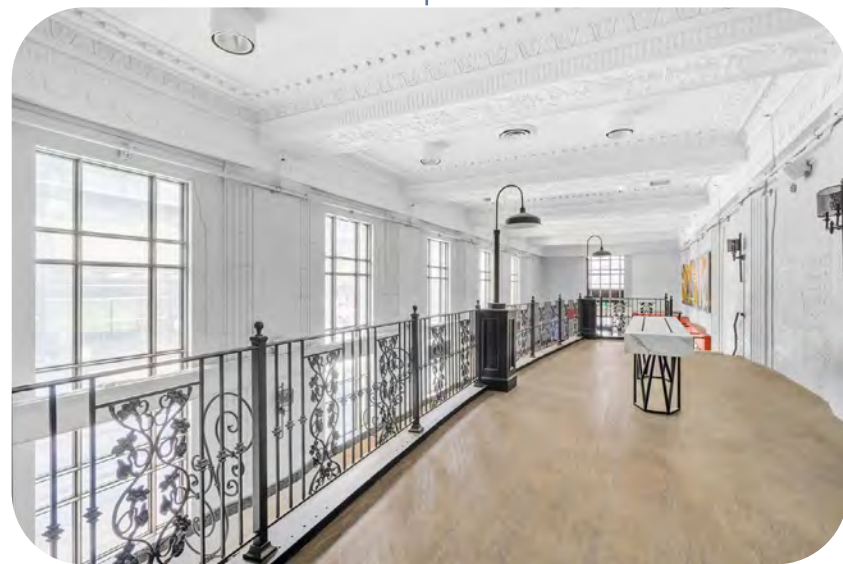
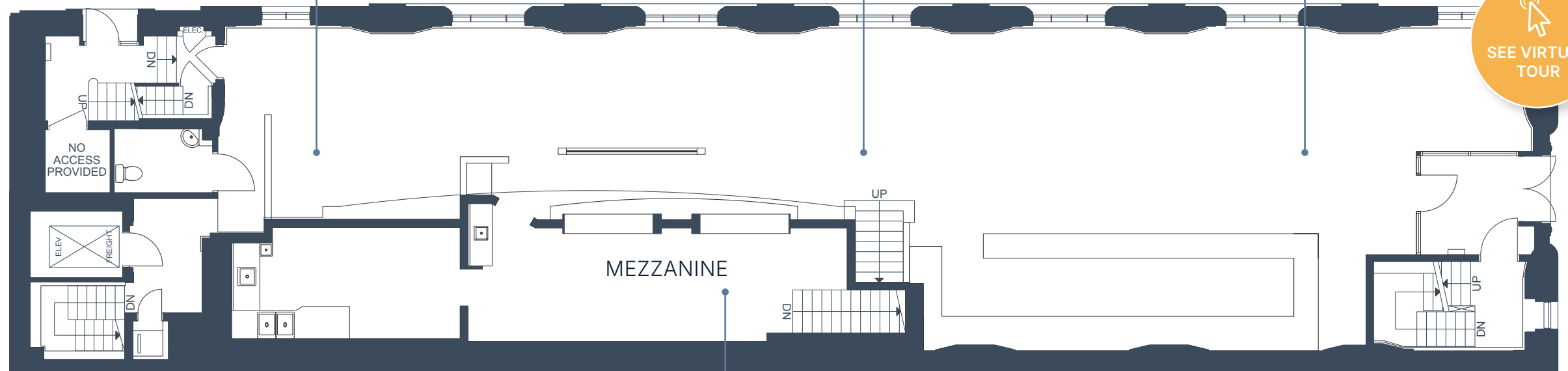
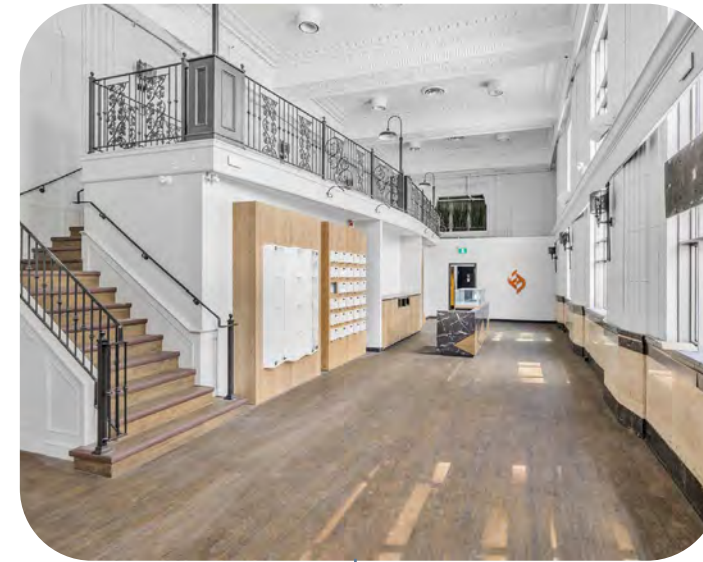
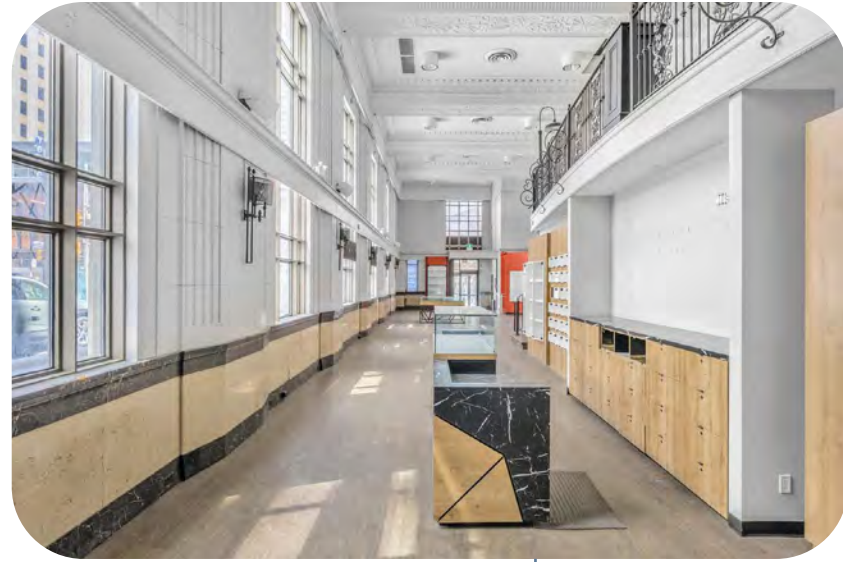
Cubecom Commercial Realty Inc. Brokerage | [www.cubecom.ca](http://www.cubecom.ca)

This disclaimer shall apply to Cubecom Commercial Realty Inc. Brokerage, and to all other divisions of the Corporation, to include all employees and independent contractors ("Cubecom"). The information set out herein, including, without limitation, any projections, images, opinions, assumptions and estimates obtained from third parties (the "Information") has not been verified by Cubecom, and Cubecom does not represent, warrant or guarantee the accuracy, correctness and completeness of the Information. Cubecom does not accept or assume any responsibility or liability, direct or consequential, for the Information or the recipient's reliance upon the Information. The recipient of the Information should take such steps as the recipient may deem necessary to verify the Information prior to placing any reliance upon the Information. The Information may change and any property described in the Information may be withdrawn from the market at any time without notice or obligation to the recipient from Cubecom. All Rights Reserved.



# Main Floor

INCLUDING MAIN FLOOR, MEZZANINE & BASEMENT



**TOTAL AREA: ~ 3,370 SF**

**1st Floor: 3,370 SF**

**Mezzanine Level 699 SF + Full Basement**

**Net Rent: Contact Listing Broker**

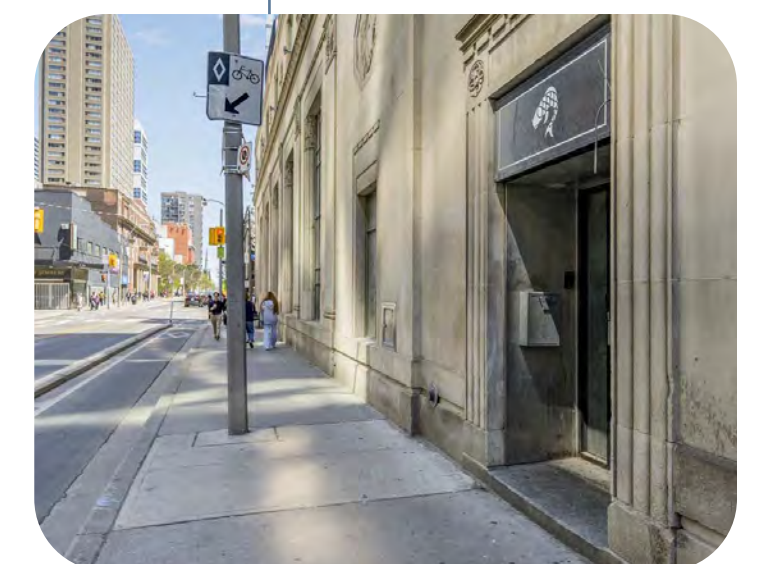
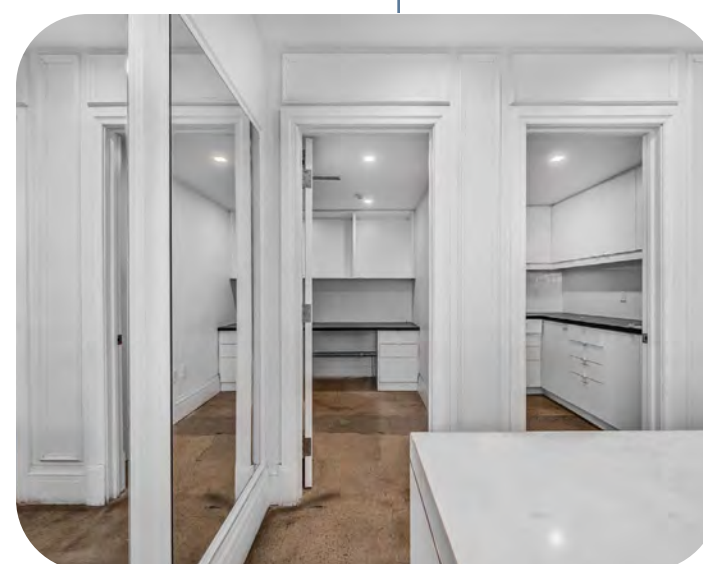
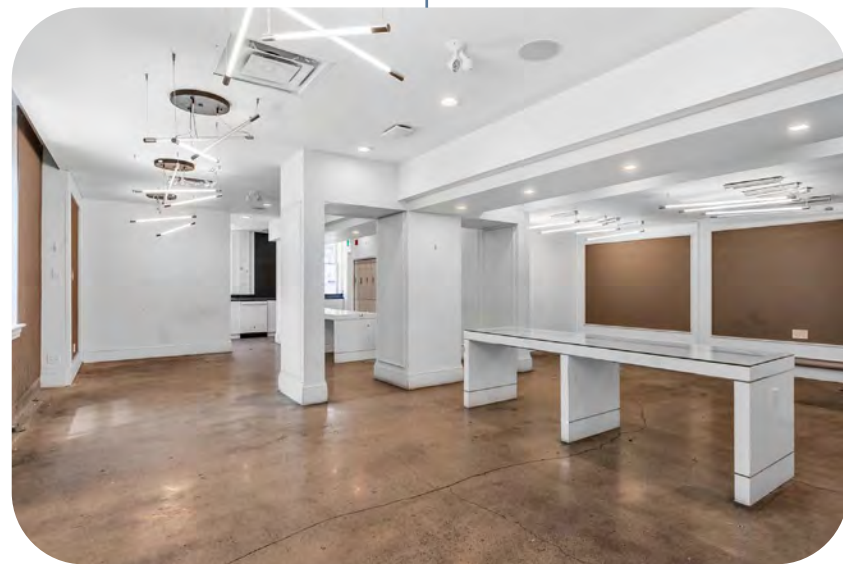
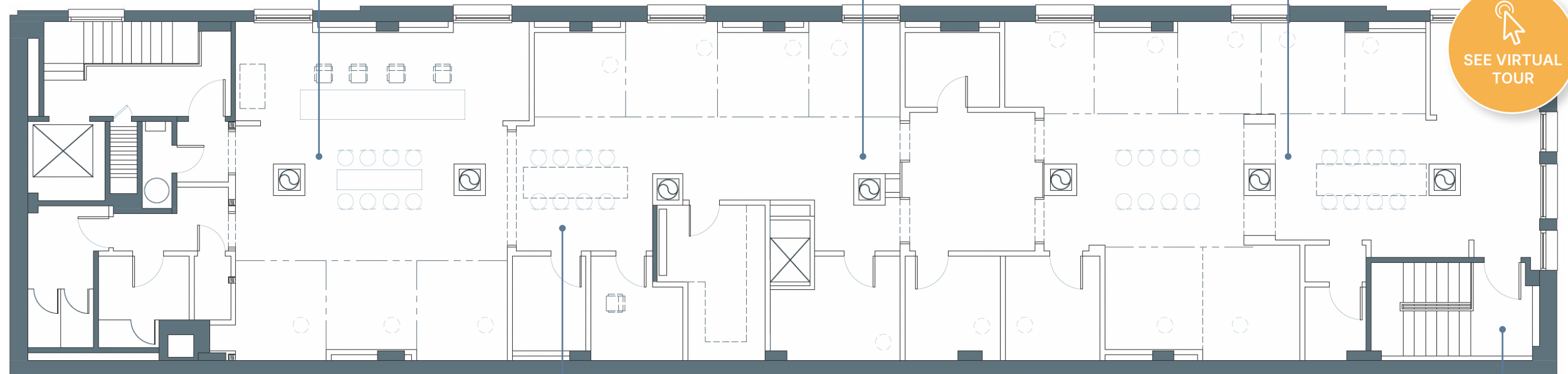
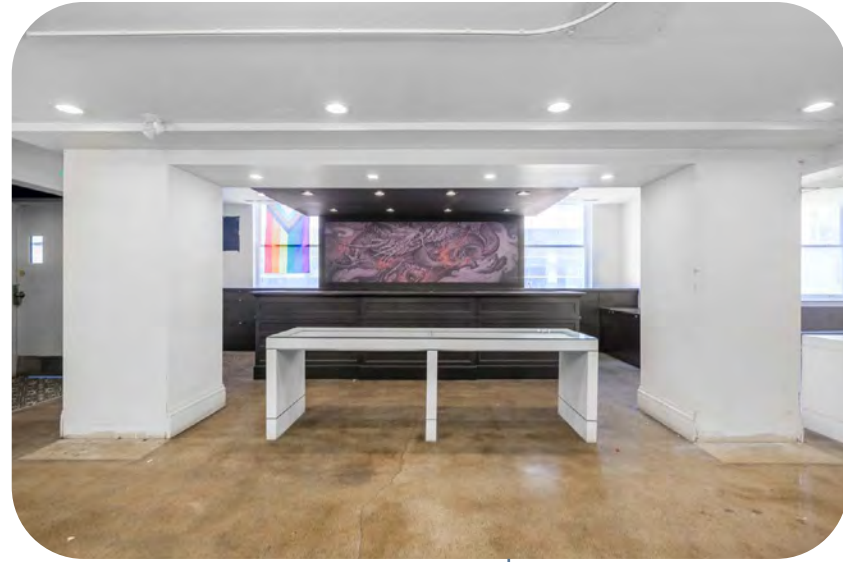
**TMI: \$49.00/sf (Estimated 2026)**



Cubecom Commercial Realty Inc. Brokerage

This disclaimer shall apply to Cubecom Commercial Realty Inc. Brokerage, and to all other divisions of the Corporation, to include all employees and independent contractors ("Cubecom"). The information set out herein, including, without limitation, any projections, images, opinions, assumptions and estimates obtained from third parties (the "Information") has not been verified by Cubecom, and Cubecom does not represent, warrant or guarantee the accuracy, correctness and completeness of the Information. Cubecom does not accept or assume any responsibility or liability, direct or consequential, for the Information or the recipient's reliance upon the Information. The recipient of the Information should take such steps as the recipient may deem necessary to verify the Information prior to placing any reliance upon the Information. The Information may change and any property described in the Information may be withdrawn from the market at any time without notice or obligation to the recipient from Cubecom. All Rights Reserved.

# 2nd Floor



**TOTAL AREA: 3,780 SF**

**Net Rent:** Contact Listing Broker

**TMI:** \$24.90/sf (Estimated 2026)

**Availability:** Immediate



Cubecom Commercial Realty Inc. Brokerage

This disclaimer shall apply to Cubecom Commercial Realty Inc. Brokerage, and to all other divisions of the Corporation; to include all employees and independent contractors ("Cubecom"). The information set out herein, including, without limitation, any projections, images, opinions, assumptions and estimates obtained from third parties (the "Information") has not been verified by Cubecom, and Cubecom does not represent, warrant or guarantee the accuracy, correctness and completeness of the Information. Cubecom does not accept or assume any responsibility or liability, direct or consequential, for the Information or the recipient's reliance upon the Information. The recipient of the Information should take such steps as the recipient may deem necessary to verify the Information prior to placing any reliance upon the Information. The Information may change and any property described in the Information may be withdrawn from the market at any time without notice or obligation to the recipient from Cubecom. All Rights Reserved.

# Bring Your Vision to Life

Create the most iconic café in the city, drawing nearby residents, TMU members, tourists, and Toronto's finest people.

Bring to life an incredible service business drawing the over 900,000 people living and working in the immediate area on a daily basis.



Cubecom Commercial Realty Inc. Brokerage

This disclaimer shall apply to Cubecom Commercial Realty Inc. Brokerage, and to all other divisions of the Corporation; to include all employees and independent contractors ("Cubecom"). The information set out herein, including, without limitation, any projections, images, opinions, assumptions and estimates obtained from third parties (the "Information") has not been verified by Cubecom, and Cubecom does not represent, warrant or guarantee the accuracy, correctness and completeness of the Information. Cubecom does not accept or assume any responsibility or liability, direct or consequential, for the Information or the recipient's reliance upon the Information. The recipient of the Information should take such steps as the recipient may deem necessary to verify the Information prior to placing any reliance upon the Information. The Information may change and any property described in the Information may be withdrawn from the market at any time without notice or obligation to the recipient from Cubecom. All Rights Reserved.

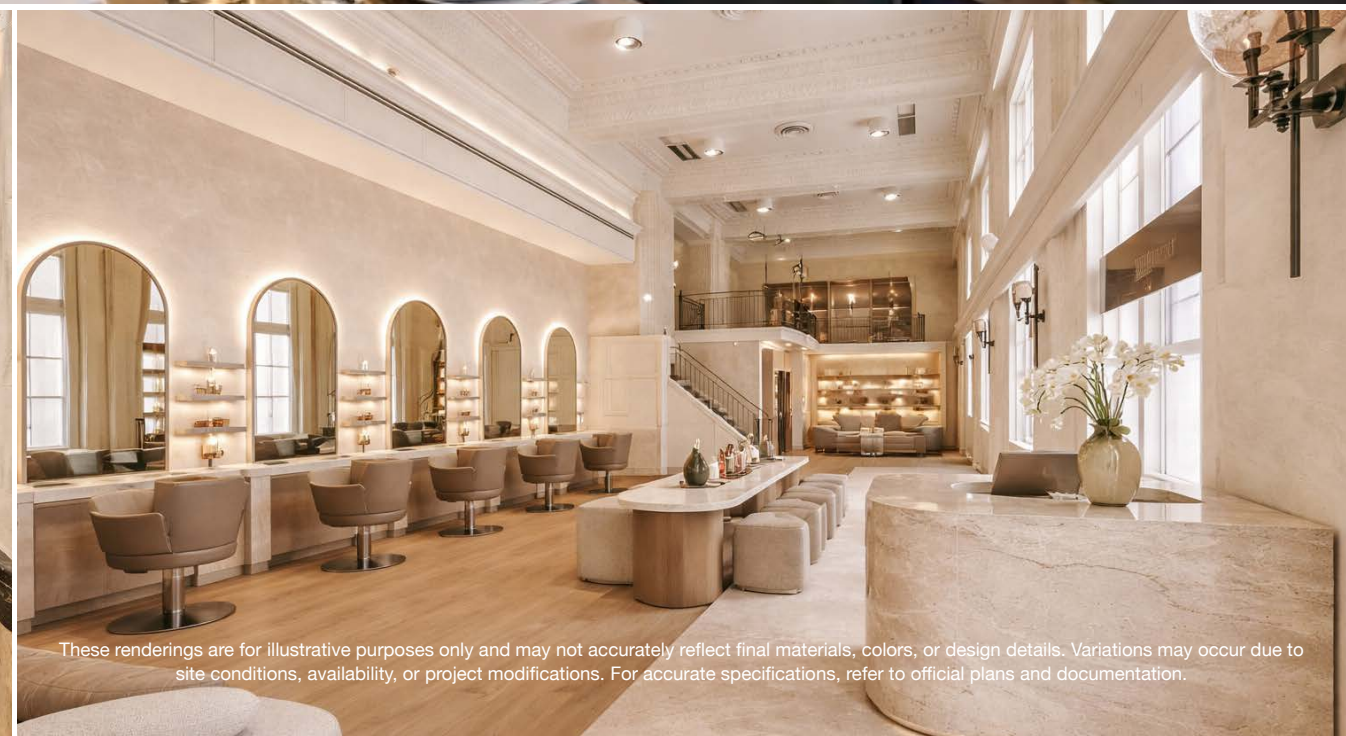


*Consider the possibilities. Suitable for a multi-ambiance restaurant space with soaring ceilings and a double-height bar or focal point.*

These renderings are for illustrative purposes only and may not accurately reflect final materials, colors, or design details. Variations may occur due to site conditions, availability, or project modifications. For accurate specifications, refer to official plans and documentation.



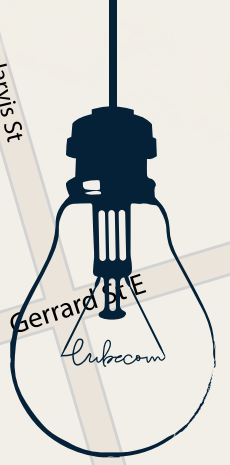
These renderings are for illustrative purposes only and may not accurately reflect final materials, colors, or design details. Variations may occur due to site conditions, availability, or project modifications. For accurate specifications, refer to official plans and documentation.



These renderings are for illustrative purposes only and may not accurately reflect final materials, colors, or design details. Variations may occur due to site conditions, availability, or project modifications. For accurate specifications, refer to official plans and documentation.

# Area Overview

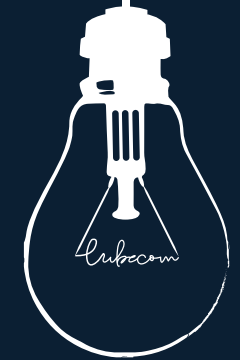
- |                              |                            |
|------------------------------|----------------------------|
| 1. Indian Studio Kitchen     | 35. St Michaels            |
| 2. Baroness                  | 36. The Senator            |
| 3. Barburrito                | 37. Jazz Bistro            |
| 4. Sweet & Natural           | 38. City TV                |
| 5. Boston Pizza              | 39. Booster Juice          |
| 6. Coronet Theatre           | 40. HomeSense              |
| 7. Marshall & Home Sense     | 41. Firkin                 |
| 8. IKEA                      | 42. Massey Hall            |
| 9. Planet Fitness            | 43. Haidilao Hot Pot       |
| 10. The Brick                | 44. Urban Outfitters       |
| 11. Tim Hurtons              | 45. Burger King            |
| 12. Silk Road Kabob house    | 46. CAA Ed Mirvish Theater |
| 13. Shoppers Drug Mart       | 47. Popeyes                |
| 14. Fast Fresh Foods         | 48. 3 Brewers              |
| 15. Coco Fresh Tea           | 49. Shake Shack            |
| 16. Thai on Yonge            | 50. Hudson Bay             |
| 17. Bar + Karaoke Lounge     | 51. Harry Rosen            |
| 18. Mc Donald's              | 52. Coach                  |
| 19. Salad King               | 53. Swatch                 |
| 20. The Yonge St Warehouse   | 54. Apple                  |
| 21. Jollibee                 | 55. Lululemon              |
| 22. Butter Baker Market Cafe | 56. Sephora                |
| 23. Don Don Izakaya          | 57. Bell                   |
| 24. Bapbo Korean             | 58. Williams Sonoma        |
| 25. Egg Club                 | 59. Roots                  |
| 26. Subway                   | 60. Samsung                |
| 27. Burrito Boyz             | 61. H&M                    |
| 28. Blaze Pizza              | 62. Joey                   |
| 29. Starbucks                | 63. Best Buy               |
| 30. Cineplex                 | 64. Starbucks              |
| 31. Spring Sushi             | 65. Canadian Tire          |
| 32. Chipotle                 | 66. Aroma                  |
| 33. Winners                  | 67. Denny's                |
| 34. Five Guys                | 68. Longos                 |



Cubecom Commercial Realty Inc. Brokerage | [www.cubecom.ca](http://www.cubecom.ca)

This disclaimer shall apply to Cubecom Commercial Realty Inc. Brokerage, and to all other divisions of the Corporation; to include all employees and independent contractors ("Cubecom"). The information set out herein, including, without limitation, any projections, images, opinions, assumptions and estimates obtained from third parties (the "Information") has not been verified by Cubecom, and Cubecom does not represent, warrant or guarantee the accuracy, correctness and completeness of the Information. Cubecom does not accept or assume any responsibility or liability, direct or consequential, for the information or the recipient's reliance upon the information. The recipient of the Information should take such steps as the recipient may deem necessary to verify the information prior to placing any reliance upon the Information. The Information may change and any property described in the Information may be withdrawn from the market at any time without notice or obligation to the recipient from Cubecom. All Rights Reserved. \*Sales Representative | Broker\*\*

# Area Context & Developments



**MARWEST GROUP OF COMPANIES**  
415 YONGE STREET



**CAPITAL DEVELOPMENTS**  
399 YONGE ST



**CONCORD CITY**  
385 YONGE STREET



**GREAT EAGLE HOLDING**  
33 GERRARD ST E



**CAPITAL DEVELOPMENTS**  
8 ELM ST



Locate at one of Toronto's busiest intersections. This highly visible corner location offers exceptional foot traffic, strong transit access, and excellent signage potential. Double height ceilings over 22ft. Surrounded by thousands of students, shoppers, and office workers daily. Across From Aura (78 storey condo tower with over 950 units), IKEA, TMU, College Park, and many other area amenities, retailers and restaurants. Proximity to Toronto Eaton Centre upcoming Concord Sky Condos.



Cubecom Commercial Realty Inc. Brokerage  
This disclaimer shall apply to Cubecom Commercial Realty Inc. Brokerage, and to all other divisions of the Corporation; to include all employees and independent contractors ("Cubecom"). The information set out herein, including, without limitation, any projections, images, opinions, assumptions and estimates obtained from third parties (the "Information") has not been verified by Cubecom, and Cubecom does not represent, warrant or guarantee the accuracy, correctness and completeness of the Information. Cubecom does not accept or assume any responsibility or liability, direct or consequential, for the Information or the recipient's reliance upon the Information. The recipient of the Information should take such steps as the recipient may deem necessary to verify the Information prior to placing any reliance upon the Information. The Information may change and any property described in the Information may be withdrawn from the market at any time without notice or obligation to the recipient from Cubecom. All Rights Reserved.



**CORY ROSEN\***  
SENIOR VICE PRESIDENT  
(416) 523-7749  
CROSEN@CUBECOM.CA

**COOPER BLUME**  
SALES REPRESENTATIVE  
C: 416-566-8217  
E: CBLUME@CUBECOM.CA



Cubecom Commercial Realty Inc. Brokerage | [www.cubecom.ca](http://www.cubecom.ca)

This disclaimer shall apply to Cubecom Commercial Realty Inc. Brokerage, and to all other divisions of the Corporation; to include all employees and independent contractors ("Cubecom"). The information set out herein, including, without limitation, any projections, images, opinions, assumptions and estimates obtained from third parties (the "Information") has not been verified by Cubecom, and Cubecom does not represent, warrant or guarantee the accuracy, correctness and completeness of the Information.

Cubecom does not accept or assume any responsibility or liability, direct or consequential, for the Information or the recipient's reliance upon the Information.

The recipient of the Information should take such steps as the recipient may deem necessary to verify the Information prior to placing any reliance upon the Information. The Information may change and any property described in the Information may be withdrawn from the market at any time without notice or obligation to the recipient from Cubecom.

All Rights Reserved. \*Sales Representative | Broker\*\*