



Matt Rosbarsky
 matt@clarkforkrealty.com



Client 360 Property View

5646 W Harrier Drive, Missoula, MT 59808

MLS#: **30068421**
 Status: **Active**

Prop Type: **Commercial Sale**
 Sub Type: **Building w/Land**

Price: **\$1,800,000**
 DOM/CDOM: **44/44**



Unit: Geocode: **04232536307110000**
 City Limits: **Unknown** County: **Missoula**
 Yr Built: **2007** Subdiv:
 Lot Size: **1.26 ac/Assessor** \$/SqFt: **\$161.29**
54,886 sqft Tot Bldg SqFt: **11,160**

Public Remarks

Situated in an 11,000+ sqft facility off Airway boulevard. This property has been used as a brewery and a tap room. Features include multiple offices, a separate space that has been used as a video/photography studio, a large walk in cooler, and a sunny green space off two french doors. The smaller warehouse space has an overhead door and ample ceiling height. The larger warehouse space also features 2 overhead doors and a covered loading area. This sale does not include the brewing or taproom equipment or fixtures. ...

Business Details

Gross Income Range: Occupant Type: **Owner**

Interior Features

Flooring: Basement: **No, None**
 Accessibility: Ceiling Height: **16 To 20 Feet, Varied Heights**

Exterior Features

Construction: Foundation: **Poured Concrete**
 Waterfront: **No** Community Feat:

Systems & Utilities

Cooling: **AC Central Air** Sewer: **Public Sewer**
 Heating: Water: **Public**
 Other Equip: Utilities: **Electricity Connected, Natural Gas Connected**

Property/Lot

Lot Dimensions: Year Built Source: **Assessor**
 Seasonal Access: Remodel/Updates: Flood Plain: **None**

Legal/Taxes

Assessor #: **0004184252** SID(s) Included: **No** Covenant: **Call List Agent**
 Zoning: **/** SID Annual Amt: School Dist:
 Taxes: **26,249.35** SID Est Tot Payoff:
 Tax Year: **2025** SID Features:
 Tax Assessed: SID Perpetual Amt:
 Legal Desc: **MISSOULA DEVELOPMENT PARK - PHASE 3C, S36, T14 N, R20 W, Lot 1**
 Lease Term Remarks:

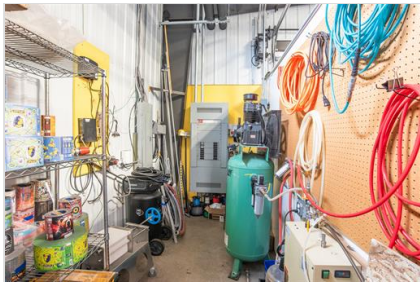
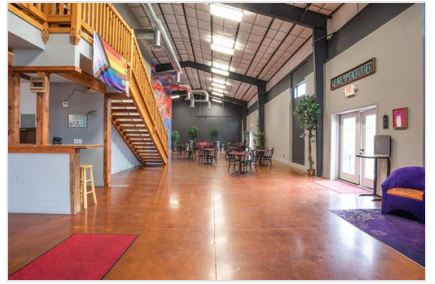
Showing

Directions: **Airway Boulevard to Harrier**

The information has been provided from sources deemed reliable but is not guaranteed.

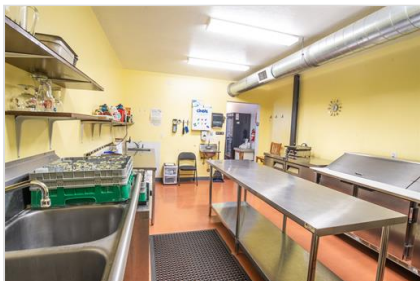
5646 W Harrier Drive

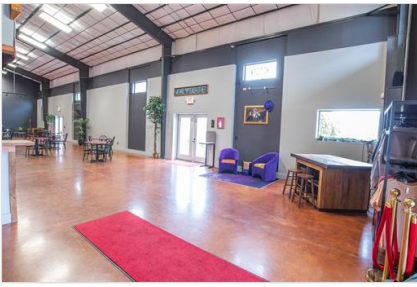
MLS #: 30068421











5646 W Harrier Drive

MLS #: 30068421

Printed: 5/22/26, 02:14 PM © 2026 Montana Regional MLS, LLC