



FOR LEASE

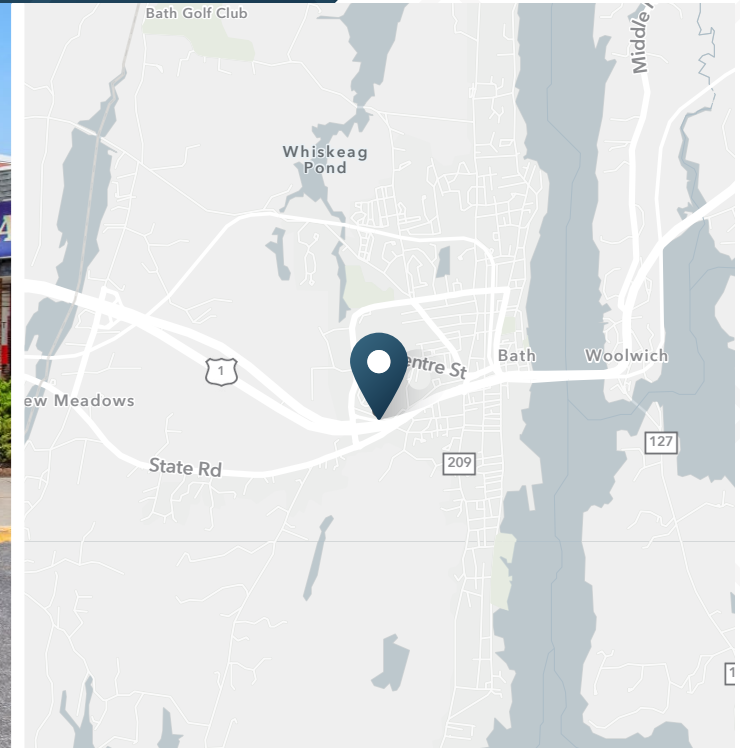
Bath Shopping Center

5 Chandler Drive | Bath, ME



Bath Shopping Center

5 Chandler Drive | Bath, ME



2,000 - 11,875 SF
Available

Contact Broker
Rate

Owned & Managed By:



ABOUT THE PROPERTY

- Shaw's anchored shopping center located on US Rte 1 with 34,000 VPD. One of the top three performing Shaw's in the state of Maine.
- This 101,124± SF shopping center is easily accessible and is a popular destination for both the local population and tourists.
- Major Tenants Include Shaws, Rent-A-Center, and Restore Habitat for Humanity.
- 398 parking spaces
- Pylon signage available.

NEARBY RETAILERS



TRAFFIC COUNTS

| | |
|----------------|------------|
| Route 1 | 34,000 VPD |
| Leeman Highway | 12,914 VPD |
| Congress Ave | 8,141 VPD |

Year: 2020 | Source: Esri

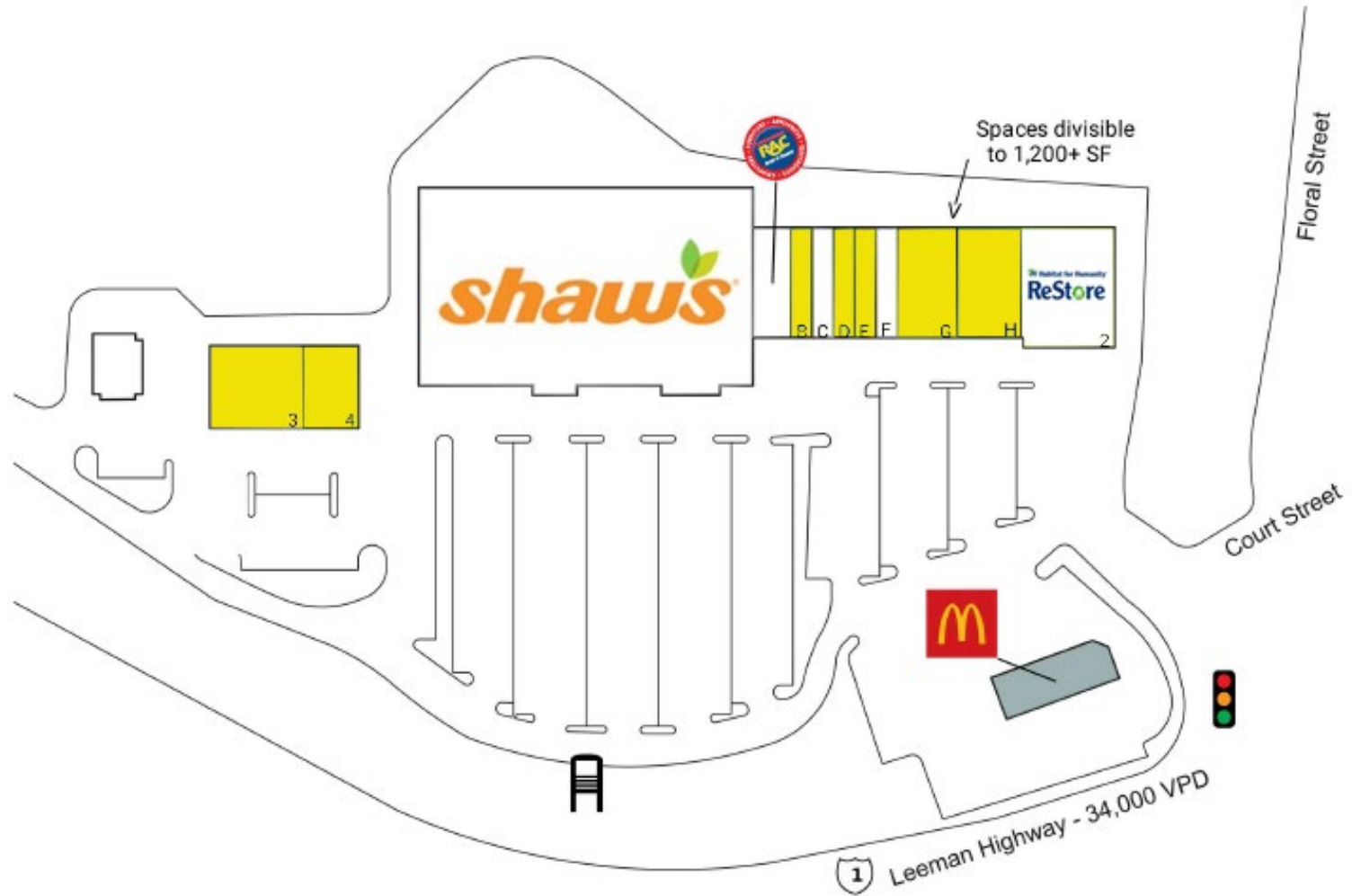
Bath Shopping Center

5 Chandler Drive | Bath, ME



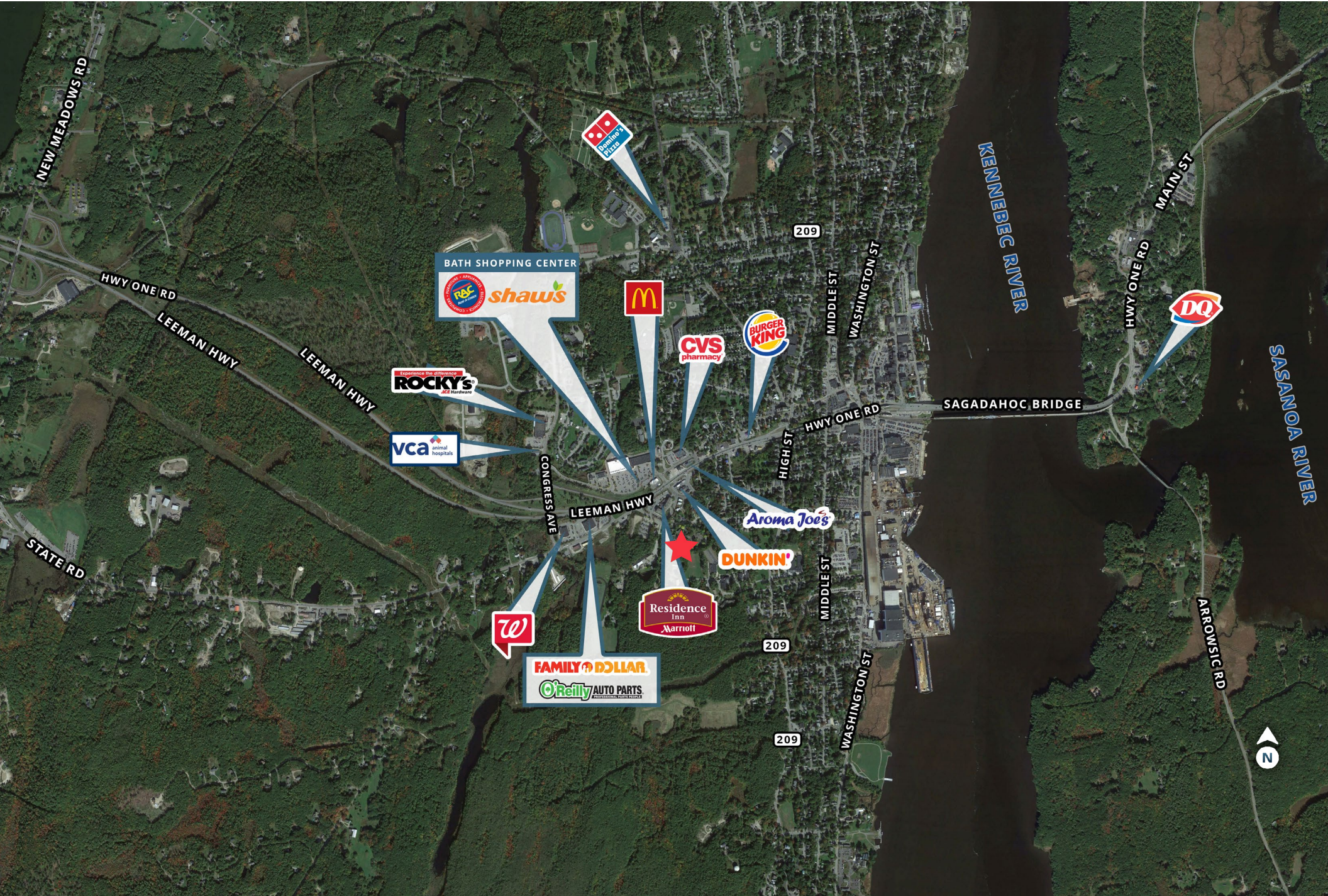
TENANTS / AVAILABILITY

| # | Tenant | Sq. Ft. |
|---|------------------------------|-----------|
| A | Rent-A-Center | 3,500 SF |
| B | AVAILABLE | 2,000 SF |
| C | Empire Nails & Spa | 2,000 SF |
| D | AVAILABLE | 2,000 SF |
| E | AVAILABLE | 2,000 SF |
| F | Revolution Hair Studio | 1,134 SF |
| G | AVAILABLE | 5,875 SF |
| H | AVAILABLE | 6,000 SF |
| 1 | Shaw's Supermarket | 57,447 SF |
| 2 | Restore Habitat for Humanity | 9,350 SF |
| 3 | LEASE PENDING | 5,993 SF |
| 4 | AVAILABLE | 3,825 SF |



Bath Shopping Center

5 Chandler Drive | Bath, ME



CONGRESS AVE

LEEMAN HWY

HWY ONE RD

HIGH ST

Aroma Joe's

DUNKIN'



FAMILY DOLLAR

O'Reilly AUTO PARTS

209

209

WASHINGTON ST

MIDDLE ST

SAGADAHOC BRIDGE

MIDDLE ST
WASHINGTON ST

KENNEBEC RIVER

HWY ONE RD
MAIN ST

SASANOA RIVER

ARROWSIC RD



Bath Shopping Center

5 Chandler Drive | Bath, ME



DEMOGRAPHIC HIGHLIGHTS

Population

| | 3 miles | 5 miles | 7 miles |
|----------------------------------|---------|---------|---------|
| 2025 Estimated Population | 11,523 | 19,577 | 35,927 |
| 2030 Projected Population | 11,774 | 20,174 | 36,751 |
| Proj. Annual Growth 2025 to 2030 | 0.43% | 0.60% | 0.45% |

Daytime Population

| | 3 miles | 5 miles | 7 miles |
|-------------------------|---------|---------|---------|
| 2025 Daytime Population | 15,544 | 27,006 | 43,461 |
| Workers | 9,730 | 17,516 | 26,056 |
| Residents | 5,814 | 9,490 | 17,405 |

Income

| | 3 miles | 5 miles | 7 miles |
|------------------------------------|----------|----------|-----------|
| 2025 Est. Average Household Income | \$92,908 | \$95,865 | \$103,693 |
| 2025 Est. Median Household Income | \$73,864 | \$74,959 | \$78,142 |

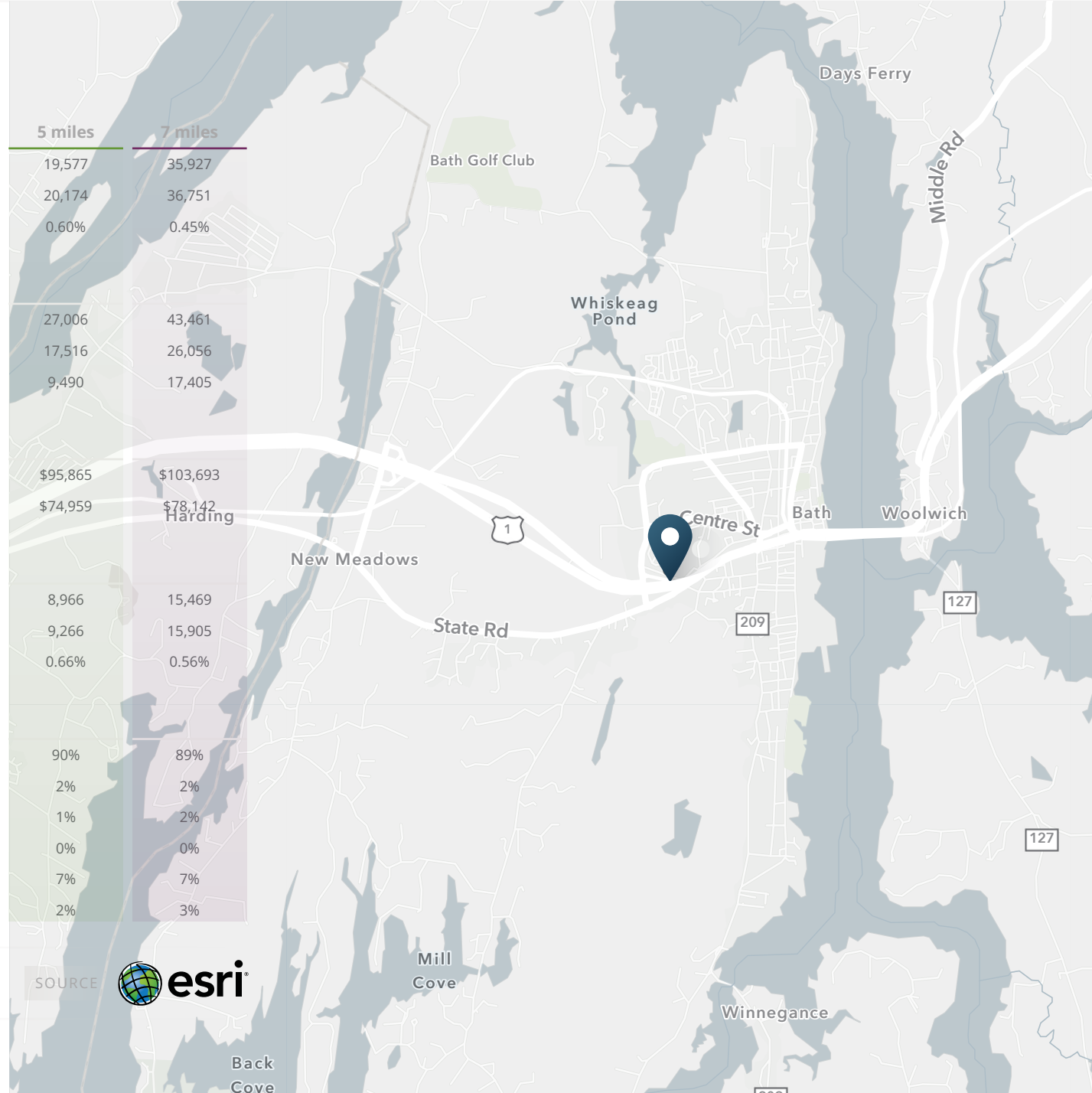
Households & Growth

| | 3 miles | 5 miles | 7 miles |
|----------------------------------|---------|---------|---------|
| 2025 Estimated Households | 5,419 | 8,966 | 15,469 |
| 2030 Estimated Households | 5,534 | 9,266 | 15,905 |
| Proj. Annual Growth 2025 to 2030 | 0.42% | 0.66% | 0.56% |

Race & Ethnicity

| | 3 miles | 5 miles | 7 miles |
|---|---------|---------|---------|
| 2025 Est. White | 90% | 90% | 89% |
| 2025 Est. Black or African American | 2% | 2% | 2% |
| 2025 Est. Asian or Pacific Islander | 1% | 1% | 2% |
| 2025 Est. American Indian or Native Alaskan | 0% | 0% | 0% |
| 2025 Est. Other Races | 7% | 7% | 7% |
| 2025 Est. Hispanic (Any Race) | 2% | 2% | 3% |

> **Want more?** Contact us for a complete demographic, foot-traffic, and mobile data insights report.





SRS Real Estate Partners
400 Fifth Avenue, Suite 105
Waltham, MA 02451
857.263.3839

BRYAN WRIGHT
617.245.0671
Bryan.Wright@srsre.com

CHRIS JANELLE
617.872.1115
Chris.Janelle@srsre.com

SAMANTHA MAZZA
614.702.5303
Samantha.Mazza@srsre.com

JONATHAN LAPAT
BROKER OF RECORD

SRSRE.COM

© SRS Real Estate Partners

The information presented was obtained from sources deemed reliable;
however SRS Real Estate Partners does not guarantee its completeness or accuracy.