

FOR LEASE

6220 TOWN POINT ROAD,
TRACYS LANDING, MD 20779



[CLICK HERE TO
VIEW 3-D TOUR](#)

DESCRIPTION

- 100-10,000 SF available + land at The Inn at Tacaro Estate
- Negotiable rent and timing
- Unique fit-out opportunities

RETAIL SPACE

6220 TOWN POINT ROAD
TRACYS LANDING, MD



AERIAL PHOTO



TOWN POINT MARINA

100-10,000 SF AVAILABLE



TACARO ESTATE
— Est. 1940 —

FOR MORE INFORMATION PLEASE CONTACT

FLETCHER GILL

PHONE: 202.735.5382

fletchergill@thegenaugroup.com

RYAN HALL

PHONE: 202.506.5126

ryanhall@thegenaugroup.com

ZACH ANDERSON

PHONE: 202.516.5392

zacharyanderson@thegenaugroup.com

The above information was obtained from sources we deem to be reliable. However, we have not verified its accuracy, and make no warranties thereof. It is submitted subject to the possibility of errors and omissions, as well as prior leasing and change of price. Furthermore, it may be withdrawn with or without notice without penalty.

6220 TOWN POINT ROAD
TRACYS LANDING, MD



SPACE HIGHLIGHTS

- Well-maintained original brickwork
- Private parking area
- Additional outdoor space available
- Two-story building
- Historic charm
- Separately metered electric
- Water included
- Visibility from nearby Inn

FOR MORE INFORMATION PLEASE CONTACT

FLETCHER GILL

PHONE: 202.735.5382

fletchergill@thegenaugroup.com

RYAN HALL

PHONE: 202.506.5126

ryanhall@thegenaugroup.com

ZACH ANDERSON

PHONE: 202.516.5392

zacharyanderson@thegenaugroup.com

The above information was obtained from sources we deem to be reliable. However, we have not verified its accuracy, and make no warranties thereof. It is submitted subject to the possibility of errors and omissions, as well as prior leasing and change of price. Furthermore, it may be withdrawn with or without notice without penalty.

6220 TOWN POINT ROAD TRACYS LANDING, MD



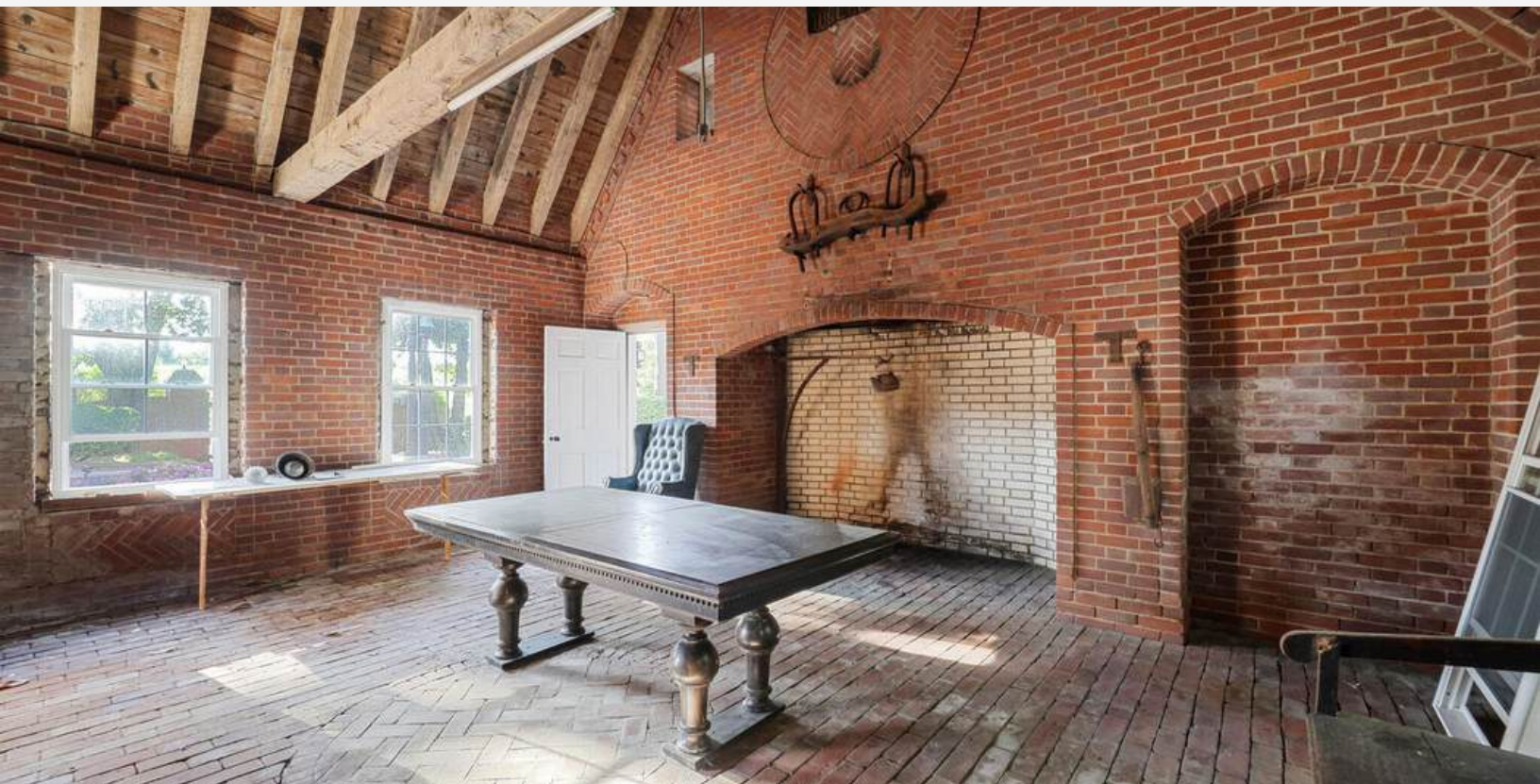
The above information was obtained from sources we deem to be reliable. However, we have not verified its accuracy, and make no warranties thereof. It is submitted subject to the possibility of errors and omissions, as well as prior leasing and change of price. Furthermore, it may be withdrawn with or without notice without penalty.

6220 TOWN POINT ROAD TRACYS LANDING, MD



The above information was obtained from sources we deem to be reliable. However, we have not verified its accuracy, and make no warranties thereof. It is submitted subject to the possibility of errors and omissions, as well as prior leasing and change of price. Furthermore, it may be withdrawn with or without notice without penalty.

6220 TOWN POINT ROAD TRACYS LANDING, MD



The above information was obtained from sources we deem to be reliable. However, we have not verified its accuracy, and make no warranties thereof. It is submitted subject to the possibility of errors and omissions, as well as prior leasing and change of price. Furthermore, it may be withdrawn with or without notice without penalty.

6220 TOWN POINT ROAD TRACYS LANDING, MD



The above information was obtained from sources we deem to be reliable. However, we have not verified its accuracy, and make no warranties thereof. It is submitted subject to the possibility of errors and omissions, as well as prior leasing and change of price. Furthermore, it may be withdrawn with or without notice without penalty.

6220 TOWN POINT ROAD TRACYS LANDING, MD



The above information was obtained from sources we deem to be reliable. However, we have not verified its accuracy, and make no warranties thereof. It is submitted subject to the possibility of errors and omissions, as well as prior leasing and change of price. Furthermore, it may be withdrawn with or without notice without penalty.

6220 TOWN POINT ROAD TRACYS LANDING, MD



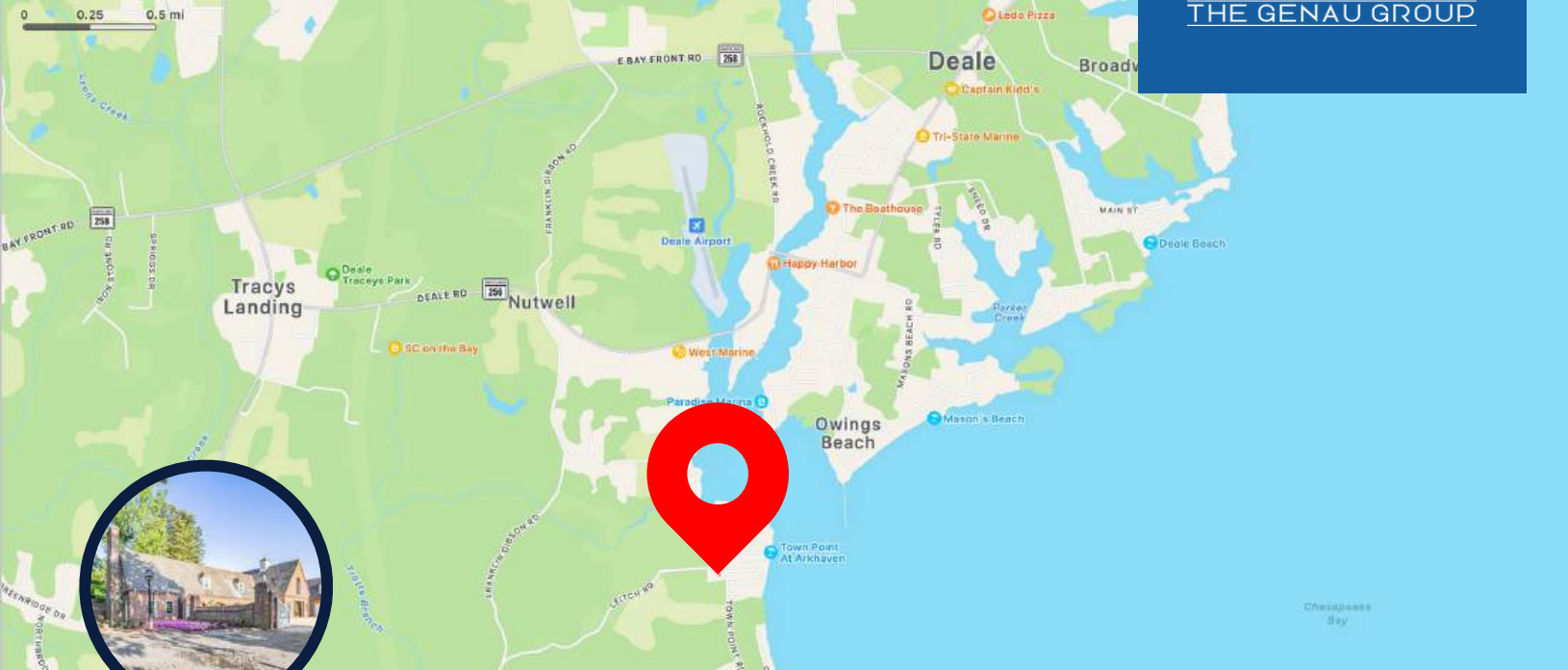
The above information was obtained from sources we deem to be reliable. However, we have not verified its accuracy, and make no warranties thereof. It is submitted subject to the possibility of errors and omissions, as well as prior leasing and change of price. Furthermore, it may be withdrawn with or without notice without penalty.

6220 TOWN POINT ROAD TRACYS LANDING, MD



The above information was obtained from sources we deem to be reliable. However, we have not verified its accuracy, and make no warranties thereof. It is submitted subject to the possibility of errors and omissions, as well as prior leasing and change of price. Furthermore, it may be withdrawn with or without notice without penalty.

6220 TOWN POINT ROAD TRACYS LANDING, MD



NEARBY AMENITIES

TRUIST 



PARKING

Private surface lot

COMMUTE TIMES

40 minutes to Annapolis
45 minutes to Downtown DC
1 hour to Baltimore

LOCATION

Located at the acclaimed Inn at Tacaro Estate, this unique space offers unparalleled charm, a built-in luxury guest base, and the opportunity to create a destination restaurant or wellness retreat within a historic village setting—just minutes from the Chesapeake Bay.

The above information was obtained from sources we deem to be reliable. However, we have not verified its accuracy, and make no warranties thereof. It is submitted subject to the possibility of errors and omissions, as well as prior leasing and change of price. Furthermore, it may be withdrawn with or without notice without penalty.

6220 TOWN POINT ROAD
TRACYS LANDING, MD



PLEASE **CONTACT** THE LISTING TEAM FOR INFORMATION



Fletcher Gill, Managing Broker

Phone: 202.735.5382

fletcherhill@thegenaugroup.com



Ryan Hall, Director

Phone: 202.506.5126

ryanhall@thegenaugroup.com



Zach Anderson, Advisor

Phone: 202.516.5392

zacharyanderson@thegenaugroup.com