

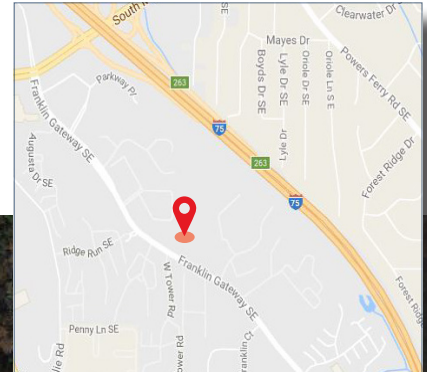


# PORTFOLIO SALE / LEASE

## FRANKLIN OFFICE PARK

### 775, 777, 779 Franklin Gateway

Marietta, GA 30067



### For more information:

**Scott Hardeman**  
404.446.1863  
shardeman@cresa.com

**Jim Bob Taylor**  
404.446.1864  
jbtaylor@cresa.com

**Gareth Tremege**  
678.446.2882  
jtremege@cresa.com

Cresa is an international corporate real estate advisory firm that exclusively represents tenants and specializes in the delivery of fully integrated real estate services, including: Transaction Management, Project Management, Strategic Services, Corporate Solutions, Site Selection, Lease Administration, Capital Markets, Mission Critical Solutions, Relocation Management, and Facilities Management. For more information, visit [www.cresa.com/atlanta](http://www.cresa.com/atlanta).

Even though obtained from sources deemed reliable, no warranty or representation, express or implied, is made as to the accuracy of the information herein, and it is subject to errors, omissions, change of price, rental or other conditions, withdrawal without notice, and to any special listing conditions imposed by our principals.



# PORTFOLIO SALE / LEASE

## 775, 777, 779 Franklin Gateway

Marietta, GA 30067

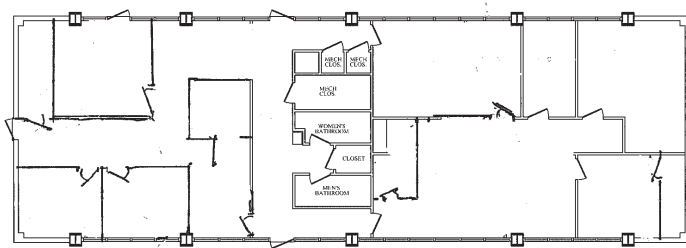
### Space Profile

<b>775 Franklin:</b>	6,424 SF (Sale and/or Lease)
<b>777 Franklin:</b>	6,666 SF (Sale Only)
<b>779 Franklin:</b>	6,666 SF (Sale Only)
<b>Submarket:</b>	NW Cumberland
<b>Parking:</b>	3.79 / 1,000 SF

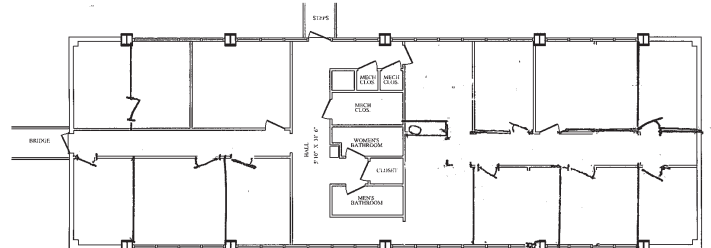
### Features

- > Great Owner/User Investment Property
- > Directly Adjacent to New Soccer Training Center and Headquarters for the Atlanta United FC
- > Located on the New Franklin Gateway less than 5 miles from The Battery & SunTrust Park
- > Office Park - Currently 66% Leased; Bldg 775 - Vacant

### Floor Plan - 775 Franklin

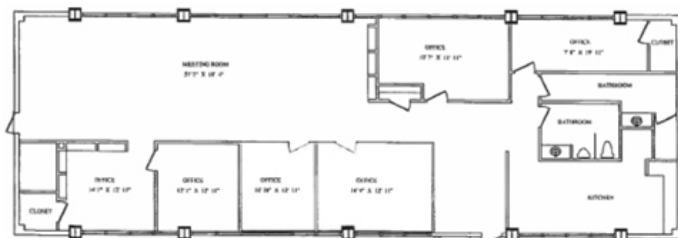


**1st Floor**

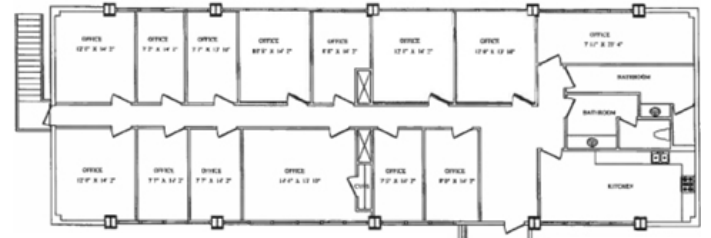


**2nd Floor**

### Floor Plan - 777 & 779 Franklin



**1st Floor**



**2nd Floor**

### For more information:

**Scott Hardeman**  
404.446.1863  
shardeman@cresa.com

**Jim Bob Taylor**  
404.446.1864  
jbtaylor@cresa.com

**Gareth Tremege**  
678.446.2882  
jtremege@cresa.com

Cresa is an international corporate real estate advisory firm that exclusively represents tenants and specializes in the delivery of fully integrated real estate services, including: Transaction Management, Project Management, Strategic Services, Corporate Solutions, Site Selection, Lease Administration, Capital Markets, Mission Critical Solutions, Relocation Management, and Facilities Management. For more information, visit [www.cresa.com/atlanta](http://www.cresa.com/atlanta).

Even though obtained from sources deemed reliable, no warranty or representation, express or implied, is made as to the accuracy of the information herein, and it is subject to errors, omissions, change of price, rental or other conditions, withdrawal without notice, and to any special listing conditions imposed by our principals.