

For Sublease

35 John Street, 2nd Floor, Toronto, ON (CBC Building)
27,500 SF (approximate)



Designer of the Year
2019
Architect of the Year
2018



SUBLEASE DETAILS

- Premises Total (approximate) 27,500 SF
- Term November 29, 2032
- Asking Rent Please Contact Agents
- Additional Rent Please Contact Agents
- Availability Immediate
- Furniture Negotiable (Knoll furniture)

Michelle L. Saberon

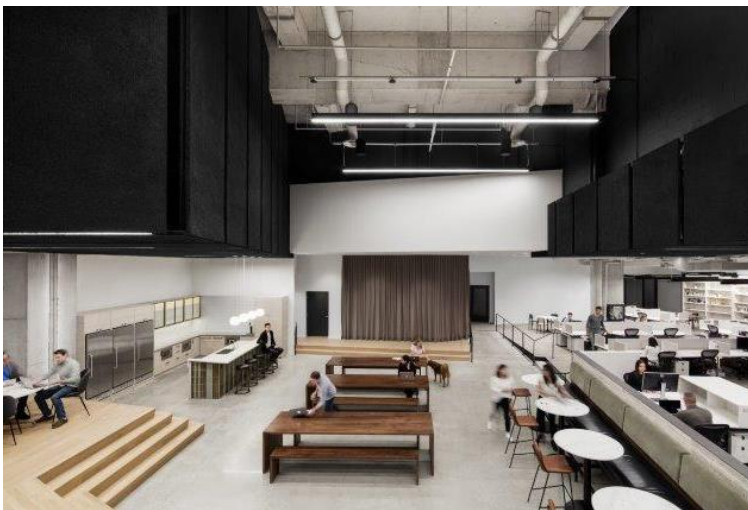
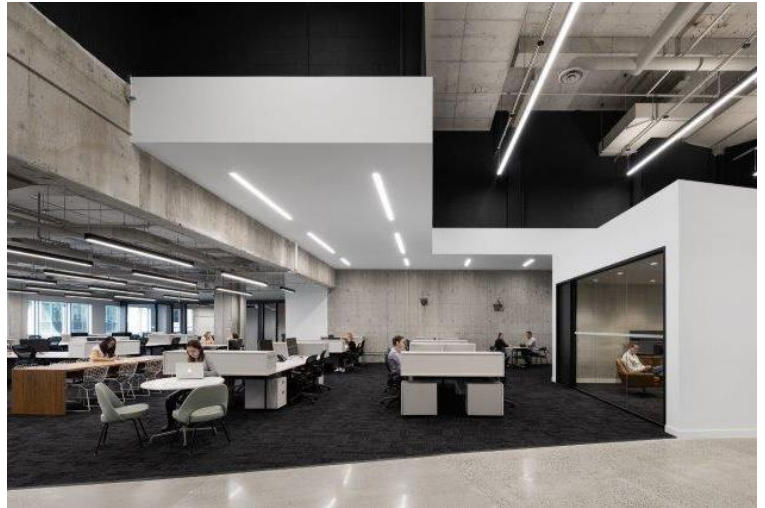
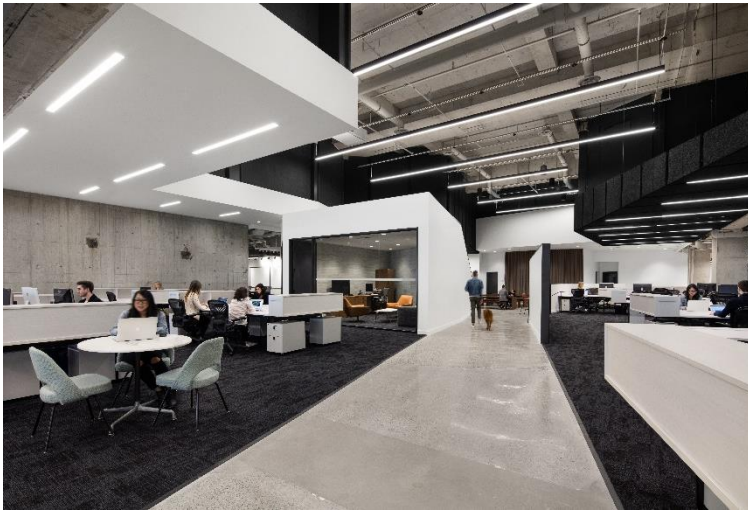
Director of OPS & TM, Sales Representative
D 416.366.2611
M 416.356.8656
msaberon@encoradvisors.com

Mark Petznick

Principal, Sales Representative
D 416.366.7597
M 416.419.6776
mpetznick@encoradvisors.com

For Sublease

35 John Street, 2nd Floor, Toronto, ON
27,500 SF (approximate)



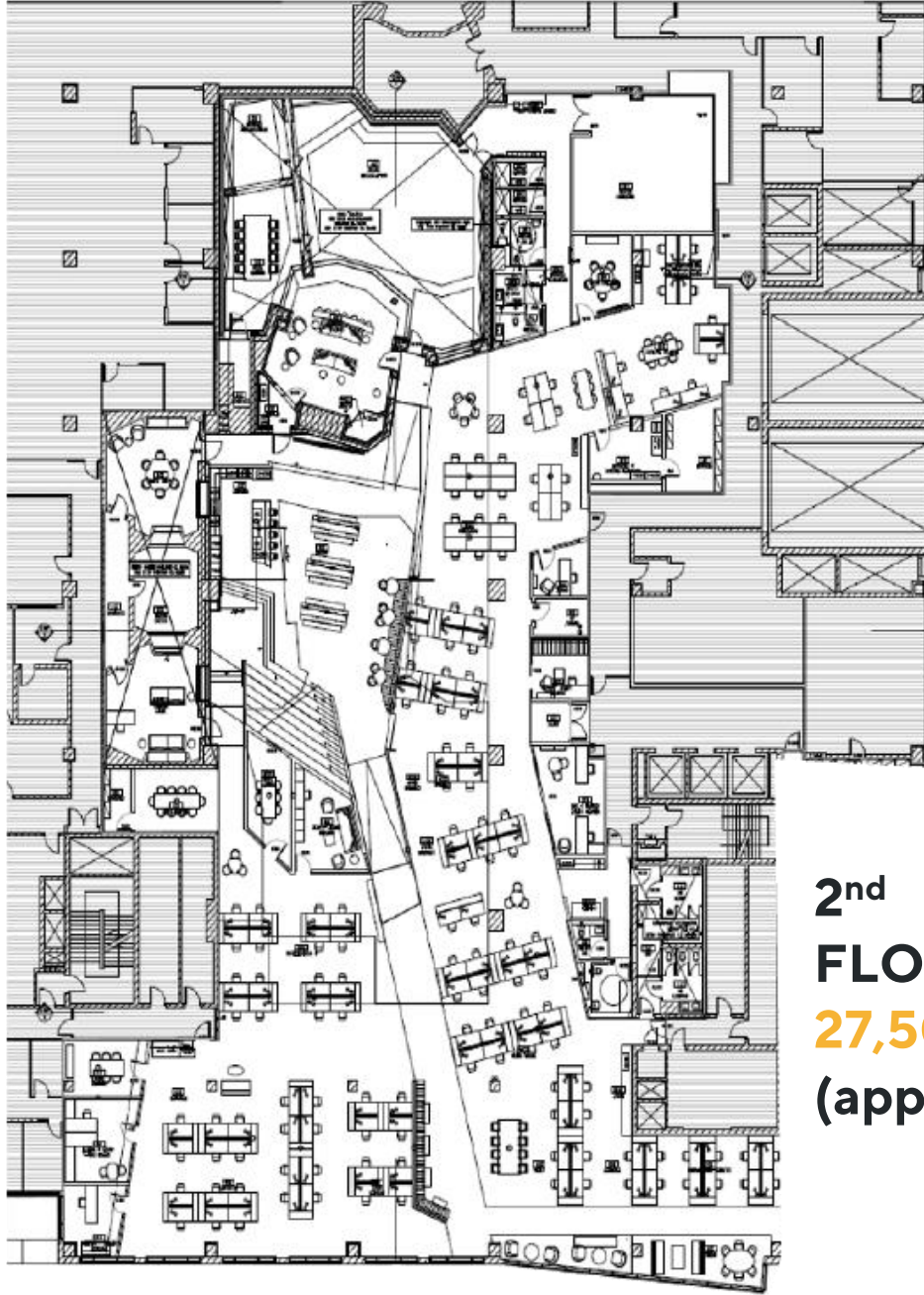
PROPERTY DETAILS

- Separately metered hydro
- Lounge
- Auditorium Style Seating
- Multiple sound and editing suites
- Large kitchen with dining hall
- Board rooms and meeting rooms
- Private offices and open workspace
- Fitness room and private showers
- Signage availability
- Parking available

For Sublease

35 John Street, 2nd Floor, Toronto, ON
27,500 SF (approximate)

Floor Plan



2nd
FLOOR
27,500 SF
(approximate)

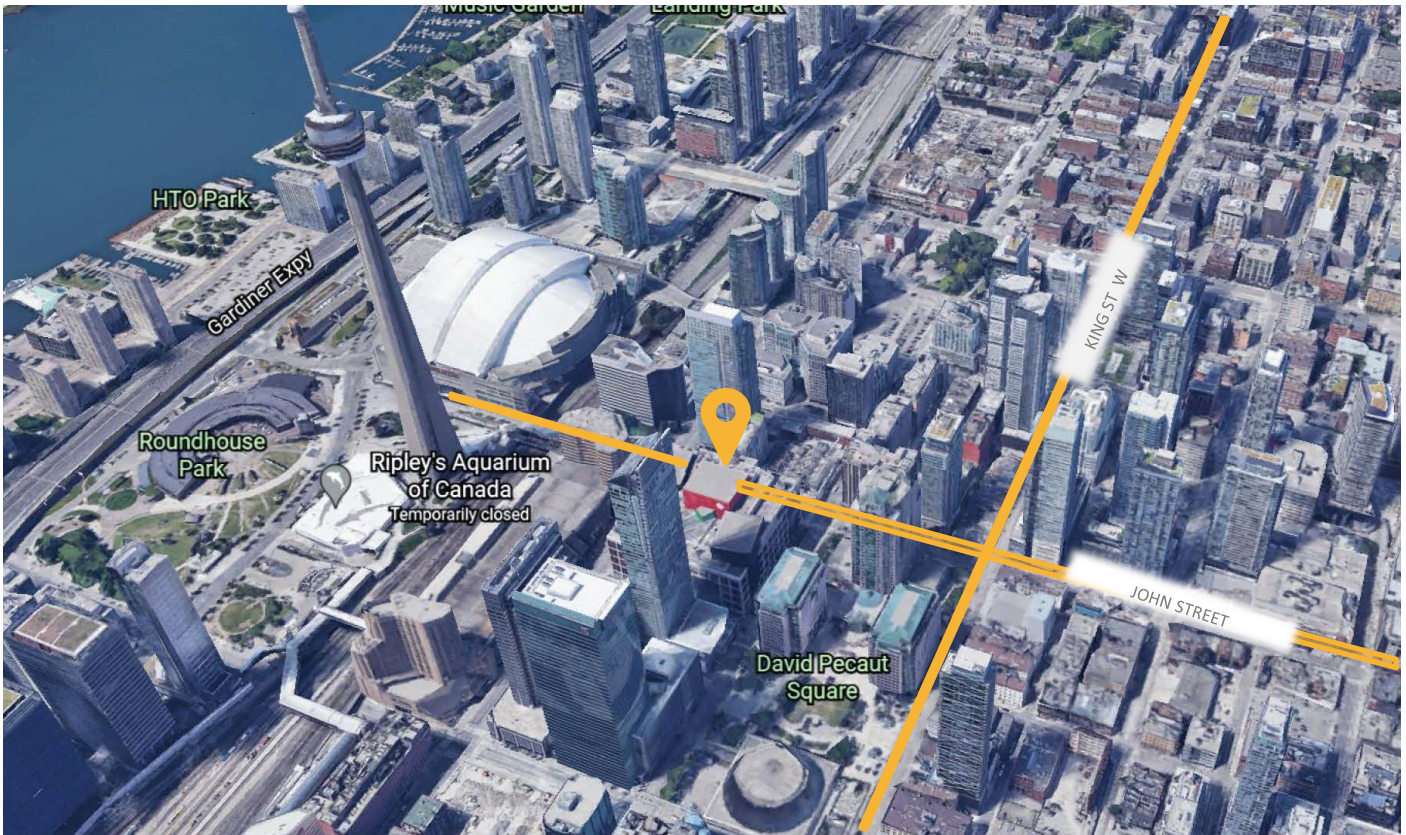
For Sublease

35 John Street, 2nd Floor, Toronto, ON
27,500 SF (approximate)



Nearby Amenities

- Borders Downtown Financial Core
- Food court and street level dining
- Indoor PATH connected
- Easy proximity to Union Station
- Walking distance to Metro Centre, Rogers Centre, Metro Toronto Convention Centre, Scotiabank Arena, Bell Lightbox, Princess of Wales Theatre and Roy Thompson Hall



Michelle L. Saberon

Director of OPS & TM, Sales Representative
D 416.366.2611
M 416.356.8656
msaberon@encoradvisors.com

Mark Petznick

Principal, Sales Representative
D 416.366.7597
M 416.419.6776
mpetznick@encoradvisors.com



100
Walk Score



64
Bike Score



100
Transit Score

