

WATERFRONT OFFICE SPACE



FOR LEASE

Upper Harbour Place consists of two award-winning Class A office buildings in Victoria's Vic West neighbourhood. A catalyst for the redevelopment of the area, the buildings continue to contribute substantially to the architectural skyline of Victoria's Inner Harbour.

Property features:

- Award winning architect designed modern glass & concrete construction
- Fully air conditioned
- Floor-to-ceiling glazing
- Excellent on-site parking
- Exceptional waterfront location
- Fibre optic cabling
- LEED silver designation

Net Rental Rate:

\$28.00

Upper Harbour Place II

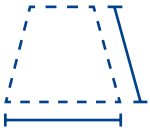
402 - 655 Tye Road | Victoria, BC

Tristan Spark

Vice President
+1 250 414 8391
tristan.spark@colliers.com

Graham Smith

Personal Real Estate Corporation
Senior Vice President
+1 250 414 8390
graham.smith@colliers.com



For lease | Class A Office Space

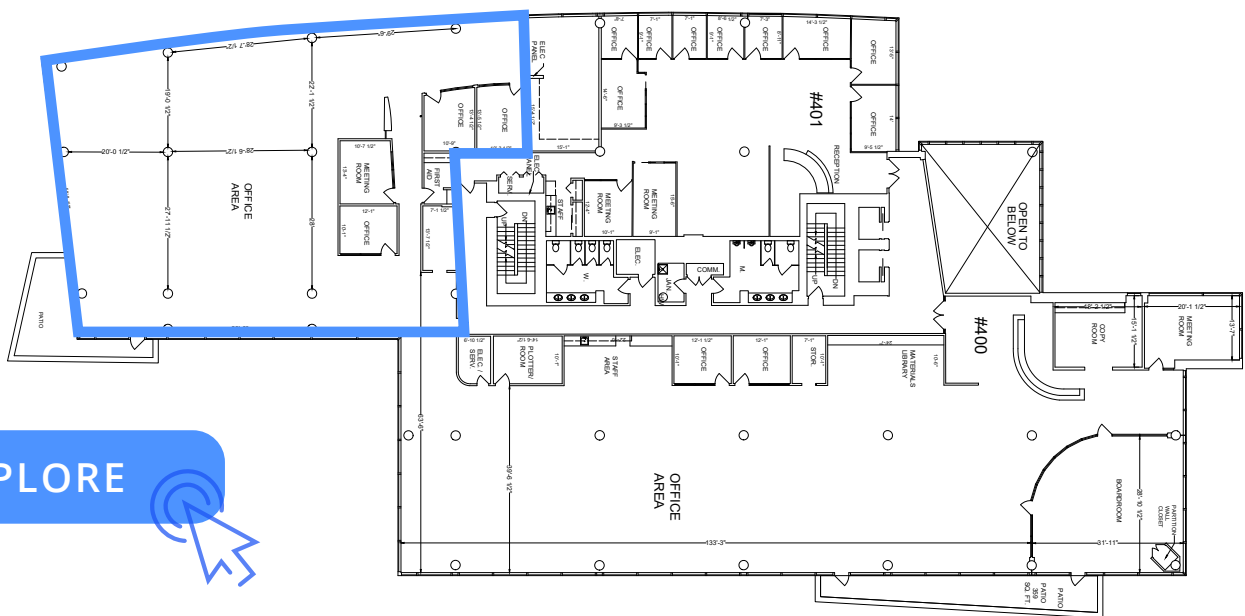
Area

- Suite 402 comprising of 6,635 SF
- Available immediately

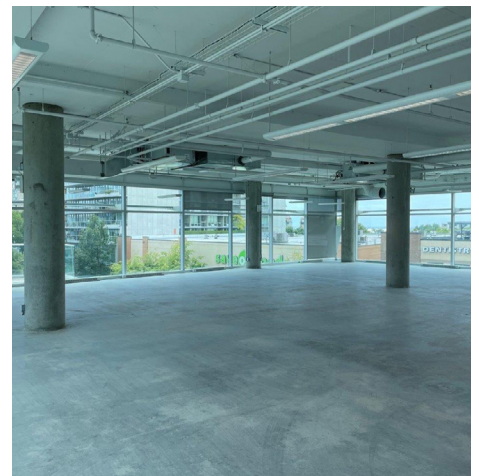
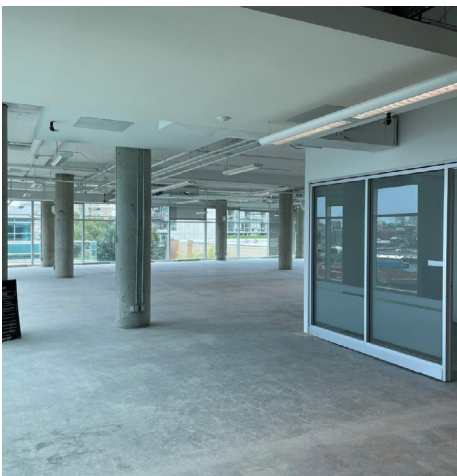
Rental rates

- Basic rent: \$28.00 PSF net per annum
- Op. Costs/taxes: \$19.27 (2024 est.)

Floor plan



EXPLORE



This document has been prepared by Colliers for advertising and general information only. Colliers makes no guarantees, representations or warranties of any kind, expressed or implied, regarding the information including, but not limited to, warranties of content, accuracy and reliability. Any interested party should undertake their own inquiries as to the accuracy of the information. Colliers excludes unequivocally all inferred or implied terms, conditions and warranties arising out of this document and excludes all liability for loss and damages arising there from. This publication is the copyrighted property of Colliers and/or its licensor(s). Copyright © 2024 Colliers Macaulay Nicolls Inc. All rights reserved. This communication is not intended to cause or induce breach of an existing listing agreement.