

2933 Grand Ave #D, E
LOS OLIVOS, CA 93441

OFFICE/RETAIL SPACE
FOR LEASE



LENA BERCH | OWNER/BROKER
DRE #00864783
lena@sapphireselectproperties.com

CRISTINA BERCH
LEASING COORDINATOR
cristina@sapphireselectproperties.com

SAPPHIRE  **SELECT**
PROPERTIES, INC.

DRE #02193853
805.694.6355
WWW.SAPPHIRESELECTPROPERTIES.COM





Downtown LOS OLIVOS

Downtown Los Olivos, California, is a quaint and picturesque small town located in the heart of the Santa Ynez Valley, renowned for its beautiful vineyards, wineries, and rustic charm. The town has an old-fashioned, yet upscale, feel, combining a rural atmosphere with sophisticated wine-country vibes.

This spacious office/retail suite on the second floor is modern, clean, and bright with large windows across the front. The unit includes newer flooring, built-in shelving, recessed lighting, a skylight, and storage closet.

SANTA YNEZ VALLEY

Six small towns are home to the region and include Ballard, the smallest and oldest community, Solvang, a charming Danish-American hamlet, the rapidly growing Buellton, the vintage chic community of Los Alamos, the laid-back wine tasting haven of Los Olivos, and the turn-of-the-20th-Century township of Santa Ynez.



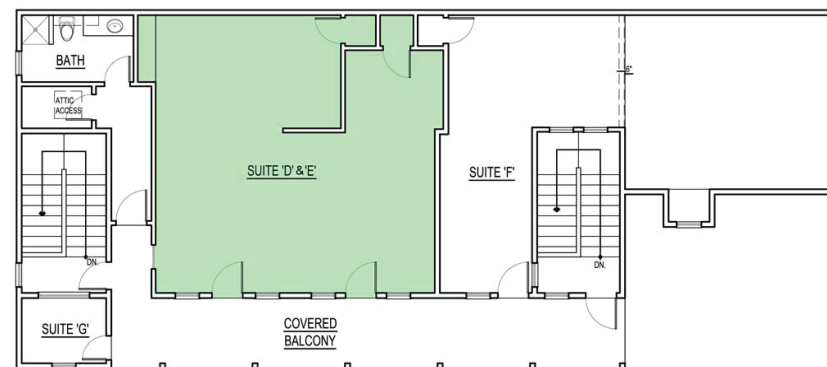


Specifics SUITE #D, E

LEASE PRICE: \$2,410/MONTH
BUILDING TYPE: OFFICE/RETAIL
SIZE: 927 SF
FLOORS: 2
TYPE: GROSS
TERM: 2-5 YEARS
HVAC: CENTRAL A/C
YEAR BUILT: 1998
ZONING: C2 GENERAL COMMERCIAL
RESTROOMS: ON EACH FLOOR

Lease Rate **\$2,410/MO**

Highly visible retail or office suite in Los Olivos. The prominent corner location; spacious, open floor plan; and lots of windows make this a pleasant and attractive location for your business.



The information provided here has been obtained from the owner of the property or from other sources deemed reliable. We have no reason to doubt its accuracy, but we do not guarantee it.

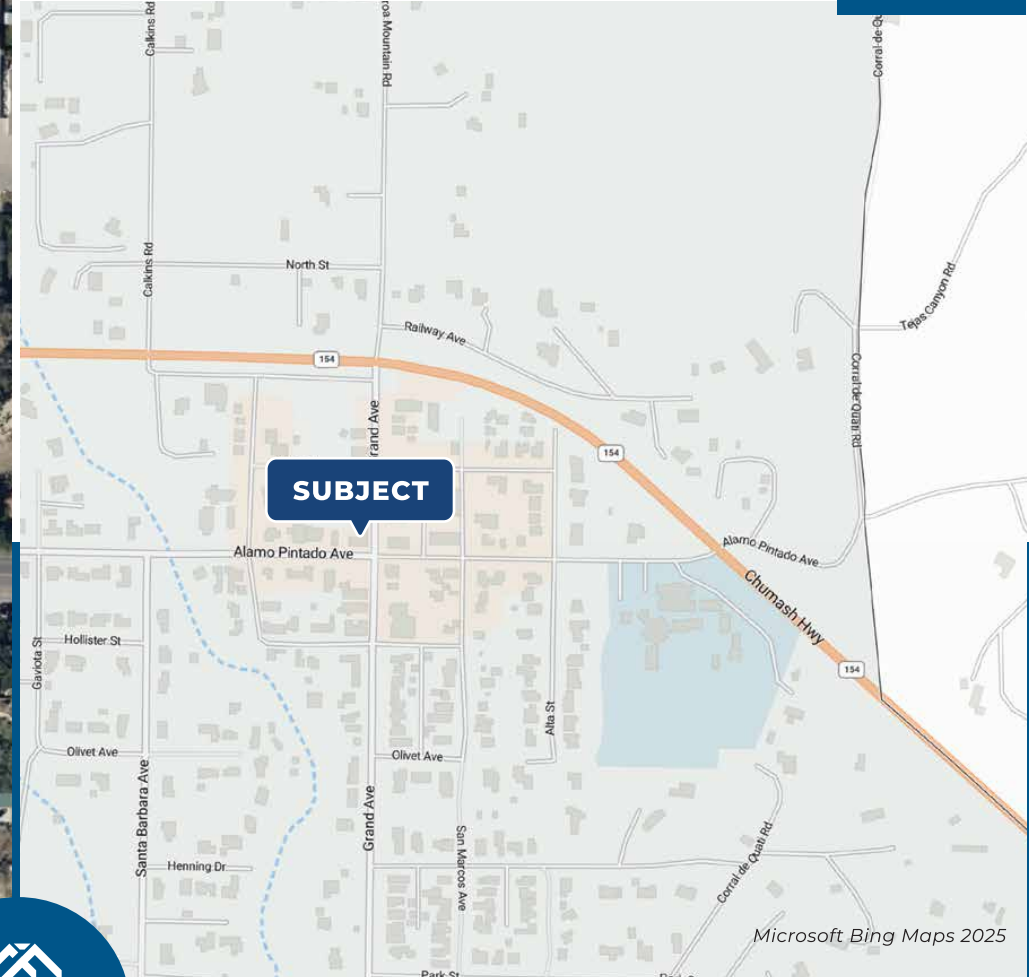
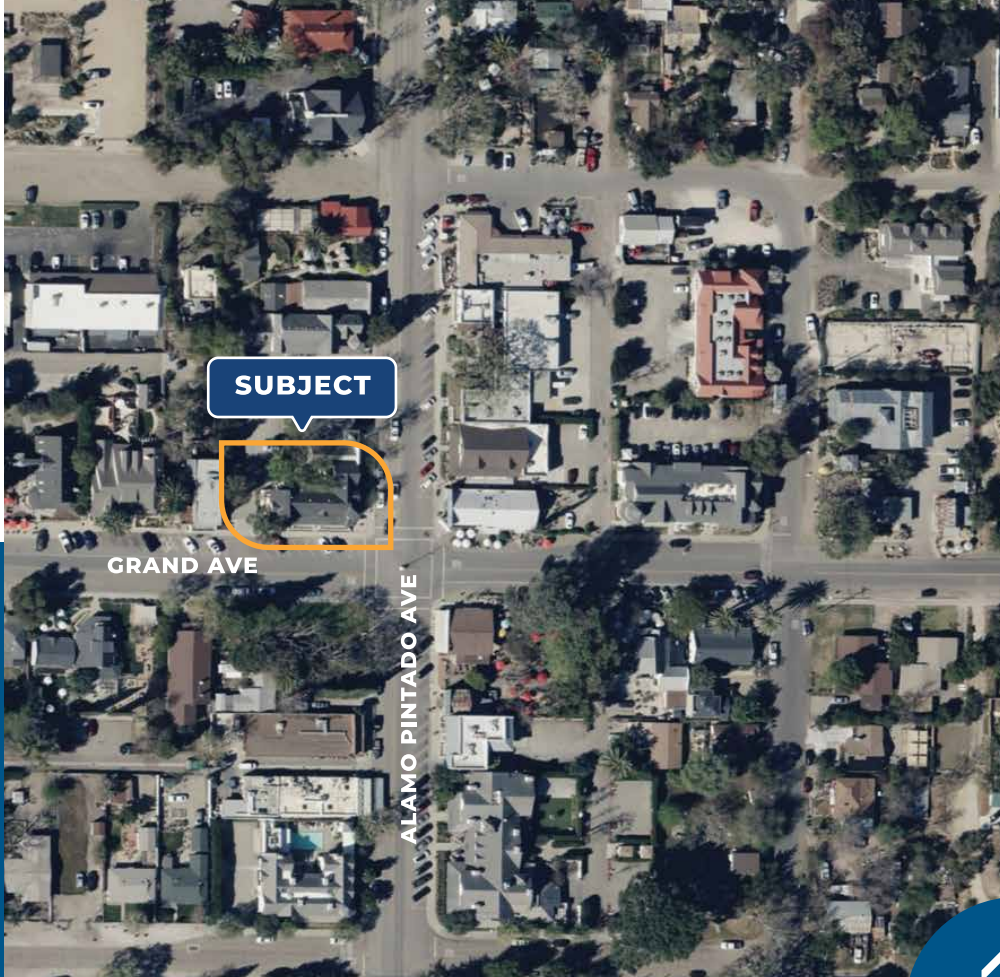
Property GALLERY

OFFICE/RETAIL SPACE



The information provided here has been obtained from the owner of the property or from other sources deemed reliable. We have no reason to doubt its accuracy, but we do not guarantee it.

Property AREA OVERVIEW



Microsoft Bing Maps 2025

LENA BERCH

OWNER/BROKER | DRE #00864783
805.694.6355

lena@sapphireselectproperties.com

SAPPHIRE SELECT
PROPERTIES, INC.

DRE #02193853

WWW.SAPPHIRESELECTPROPERTIES.COM

CRISTINA BERCH

LEASING COORDINATOR
805.680.2279

cristina@sapphireselectproperties.com

The information provided here has been obtained from the owner of the property or from other sources deemed reliable. We have no reason to doubt its accuracy, but we do not guarantee it.