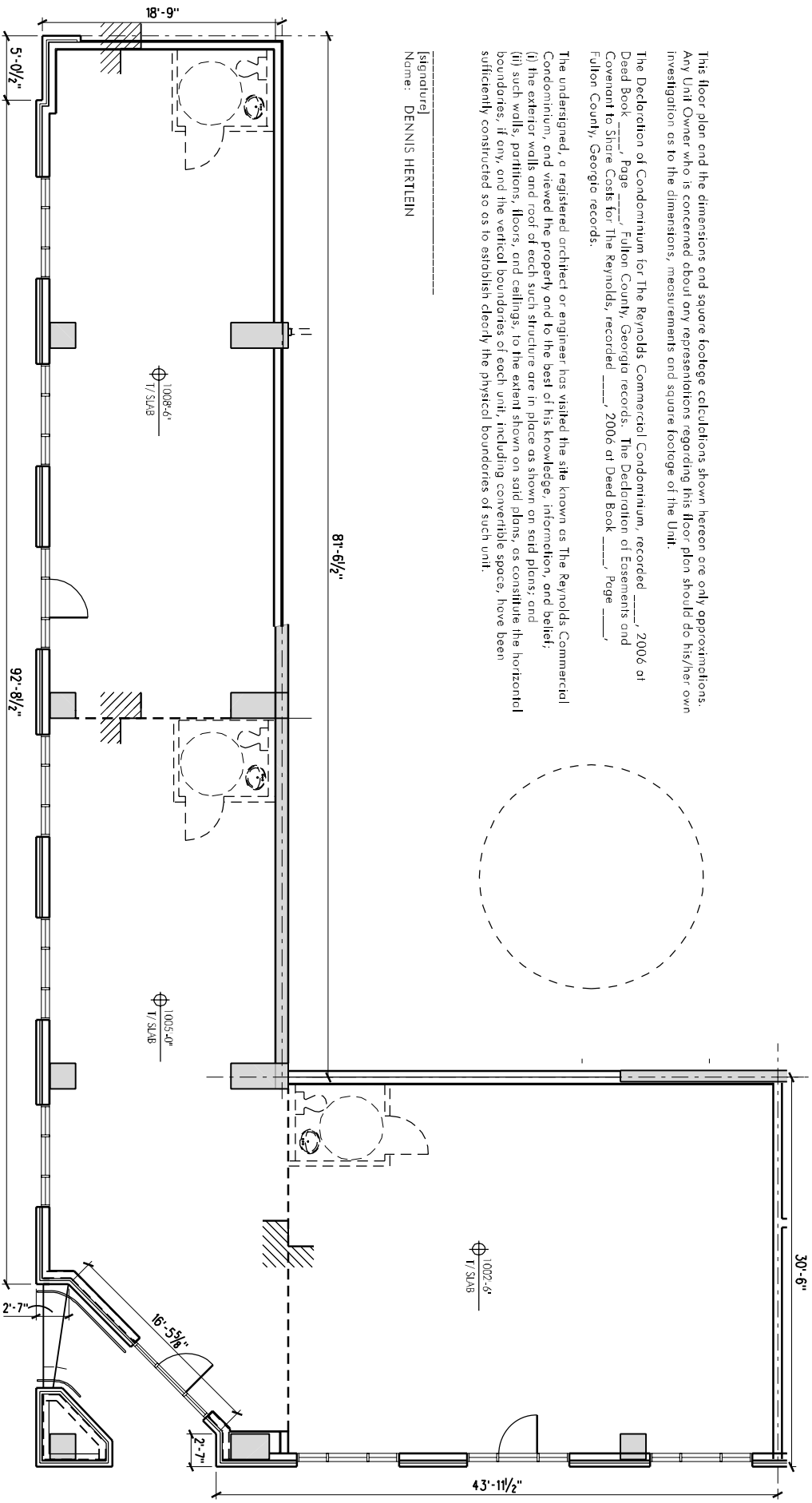


This floor plan and the dimensions and square footage calculations shown herein are only approximations. Any Unit Owner who is concerned about any representations regarding this floor plan should do his/her own investigation as to the dimensions, measurements and square footage of the Unit.

The Declaration of Condominium for The Reynolds Commercial Condominium, recorded _____, 2006 at Deed Book _____, Page _____, Fulton County, Georgia records. The Declaration of Easements and Covenant to Share Costs for The Reynolds, recorded _____, 2006 at Deed Book _____, Page _____, Fulton County, Georgia records.

The undersigned, a registered architect or engineer has visited the site known as The Reynolds Commercial Condominium, and viewed the property and to the best of his knowledge, information, and belief;
 (i) the exterior walls and roof of each such structure are in place as shown on said plans; and
 (ii) such walls, partitions, floors, and ceilings, to the extent shown on said plans, as constitute the horizontal boundaries, if any, and the vertical boundaries of each unit, including convertible space, have been sufficiently constructed so as to establish clearly the physical boundaries of such unit.

[signature]
 Name: DENNIS HERTLEIN



LEVEL 02 RETAIL C PLAN

3200 SF (ALL THREE SPACES)

RETAIL C
LVL 02
 SCALE: 1/8" = 1'-0"
 DATE: 23 MAY 2006

THE REYNOLDS
 COMMERCIAL CONDOMINIUM
 565 PEACHTREE STREET
 ATLANTA, GEORGIA
 Prepared for: Urban Realty Partners

SURBER BARBER
CHOATE & HERTLEIN
 ARCHITECTS, INC.
 1716 PEACHTREE STREET, N.W.
 SUITE 700, S.O.U.T.H.
 ATLANTA, GEORGIA 30309
 TELEPHONE 404-872-8400
 FACSIMILE 404-892-1990