




Available

Class A office space $\pm 1,040$ – $\pm 5,013$ RSF

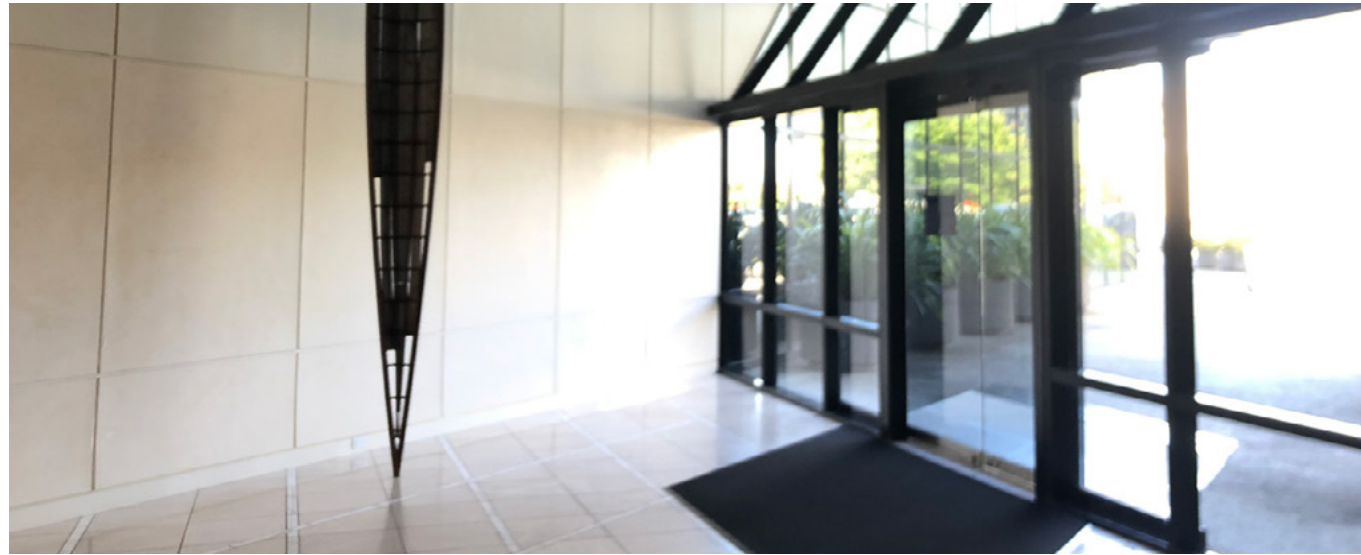
111 Anza Blvd., Burlingame, CA 94010

 **JLL** SEE A BRIGHTER WAY

Jones Lang LaSalle Brokerage, Inc. Real Estate License #: 01856260

Property highlights

- Class A building
- Remodeled lobby and corridors
- Workout room and showers
- Gigi's Café onsite – included in Yelp's top 100 places to eat
- Peninsula's first solar office building
- Covered parking
- Available now
- Call to tour



Available suites

Click suite number to view floor plan

Suite #	RSF	Available date	Virtual tour
210	±1,040	Available now	-
304	±2,176	Available now	Link
308	±5,013	Available 6/1/26 <i>*Can be divided to ±1,759 RSF and ±3,254 RSF</i>	-
334	±2,714	Available now	Link
336	±1,475	Available now	Link
350	±4,882	Available now <i>*Can be divided to ±1,715 RSF and ±3,162 RSF</i>	Link
411	±3,451	Available Now <i>*Can be combined with Suite 406 for ±5,195 RSF or Divided to ±1,295 RSF</i>	-

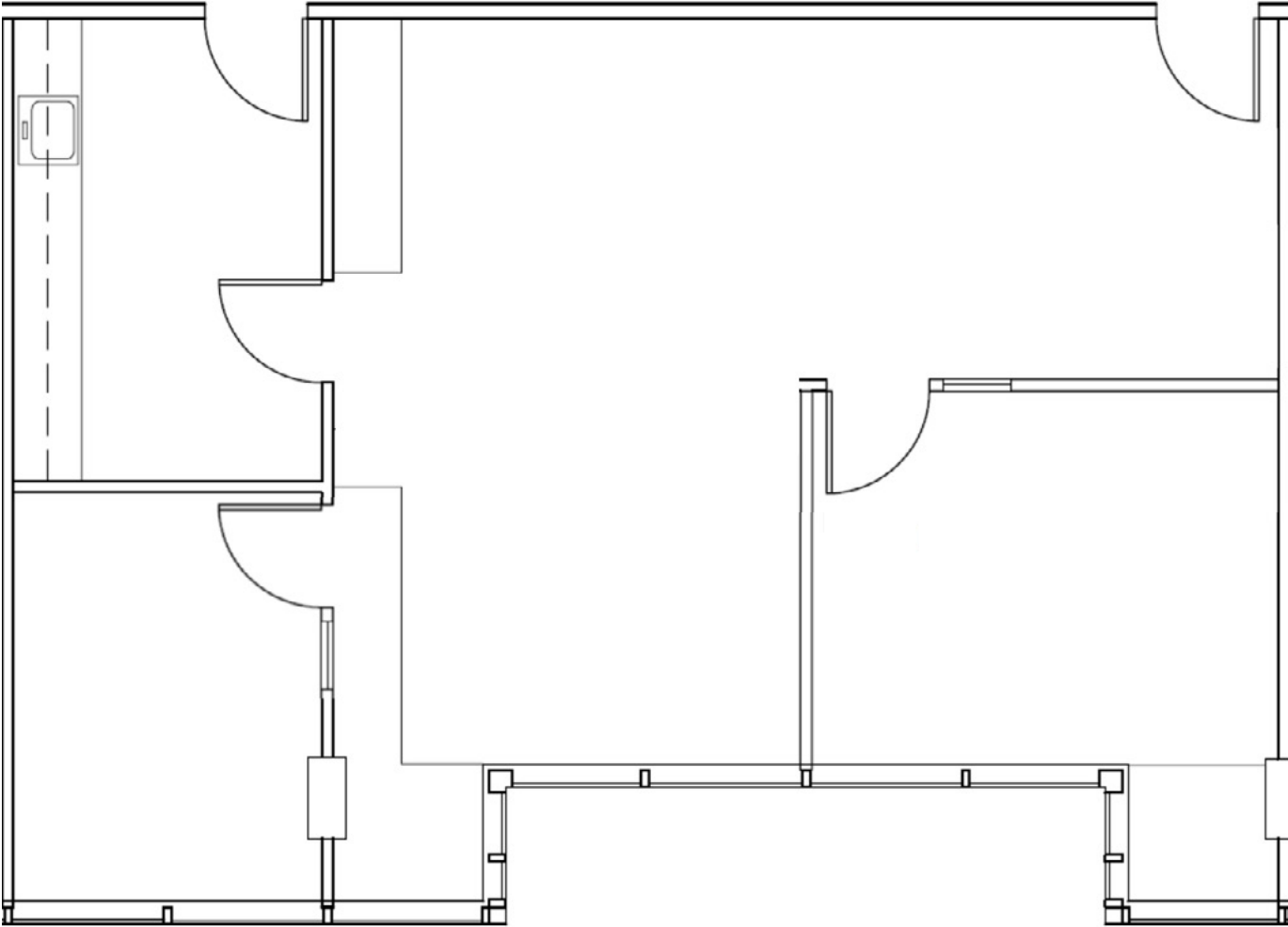


Available

Suite 210 | 1,040 RSF

Available now

**2 private offices, kitchenette, open office*



Available

Suite 304 | ±2,176 RSF

Available now

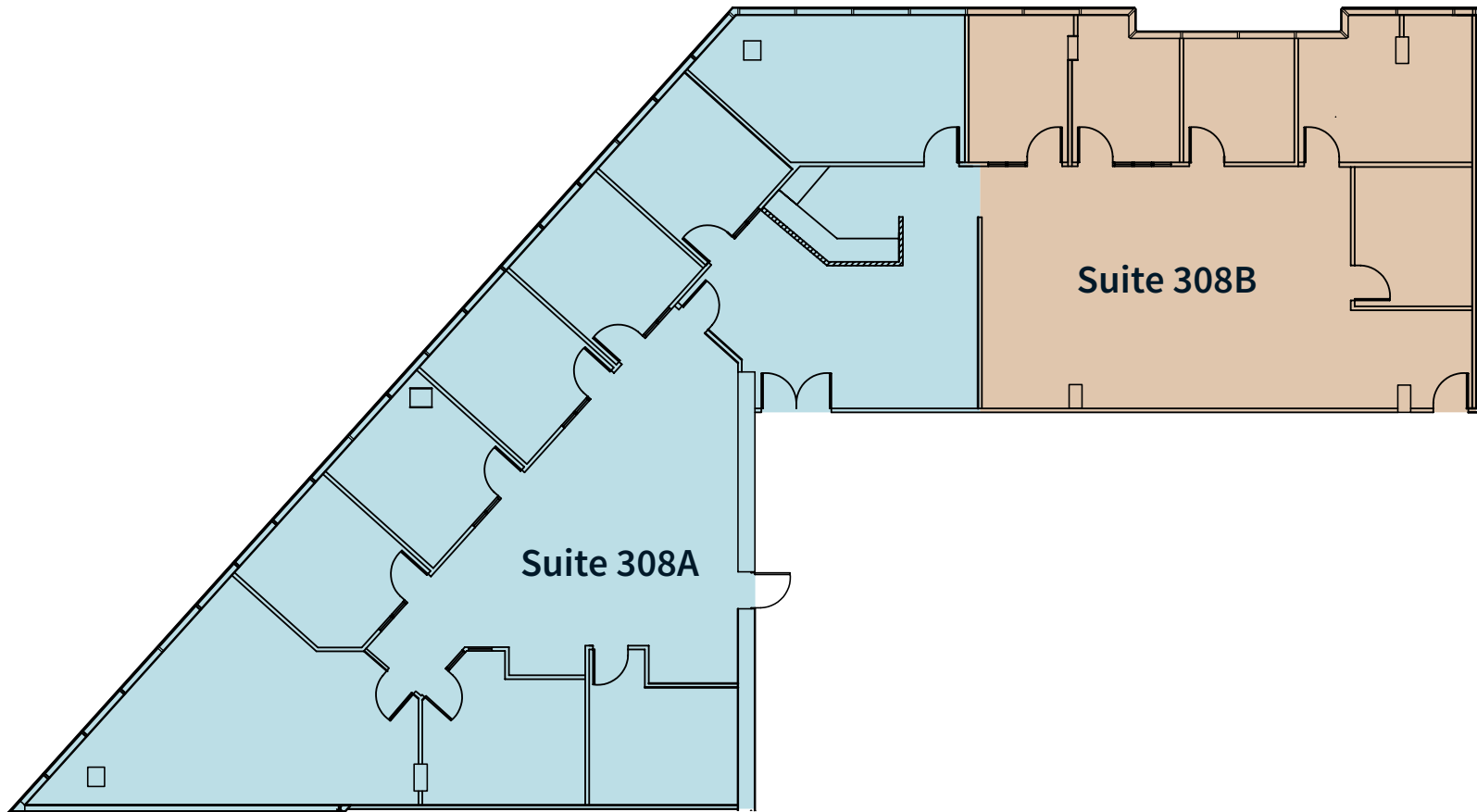


Available 6/1/26

Suite 308 | ±5,013 RSF

- Suite 308A | ±3,254 RSF
- Suite 308B | ±1,759 RSF

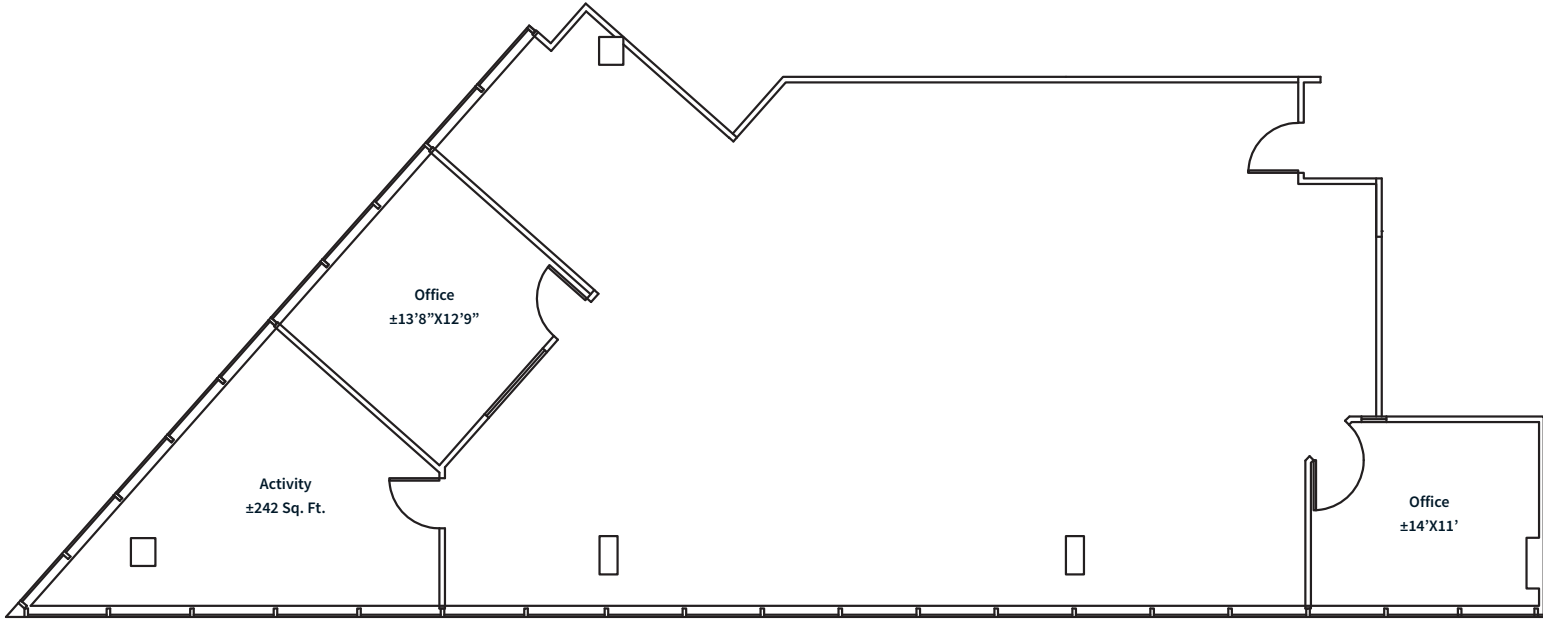
**Can be divided per plan below*



Available

Available now

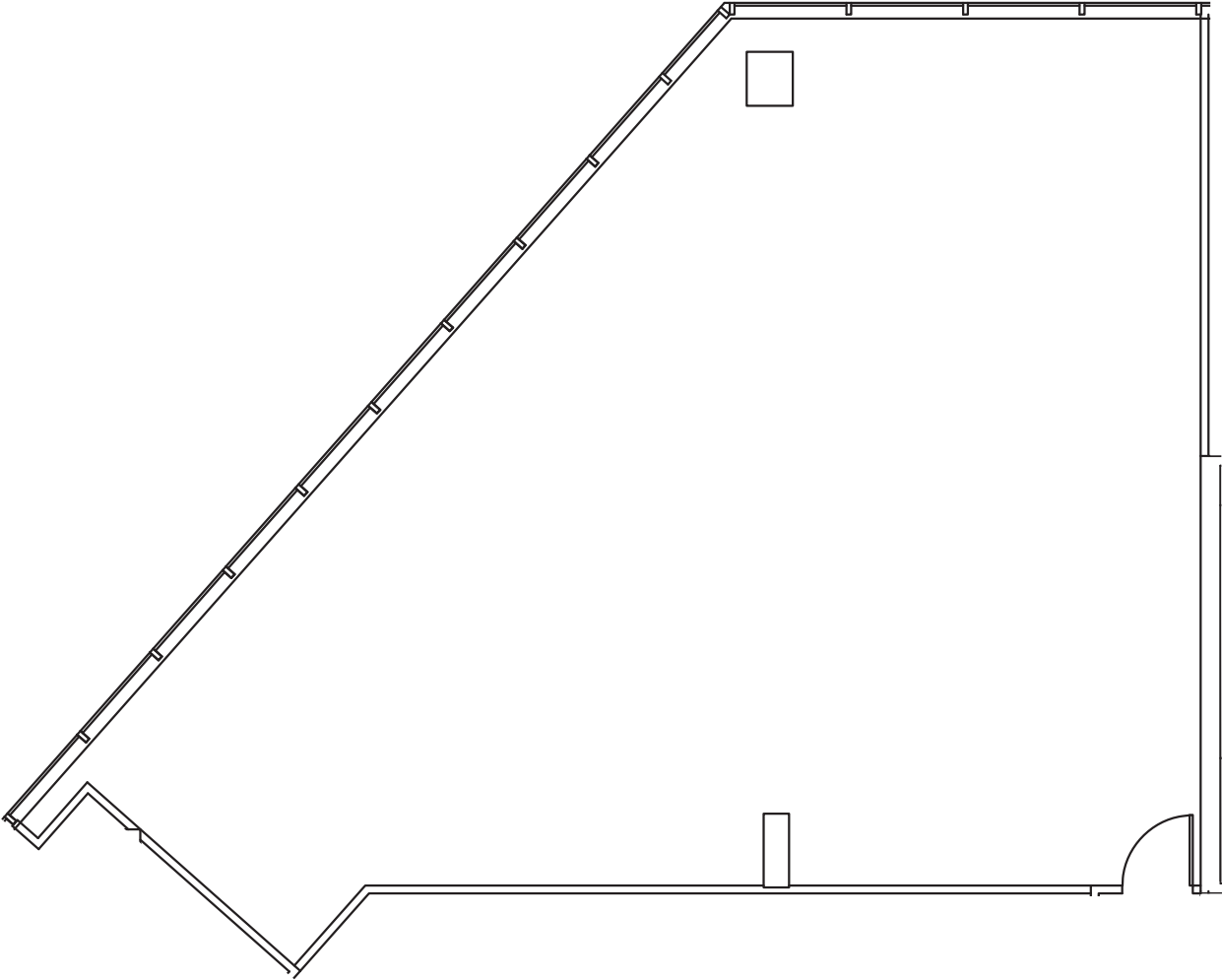
Suite 334 | ±2,714 RSF



Available

Suite 336 | ±1,475 RSF

Available now



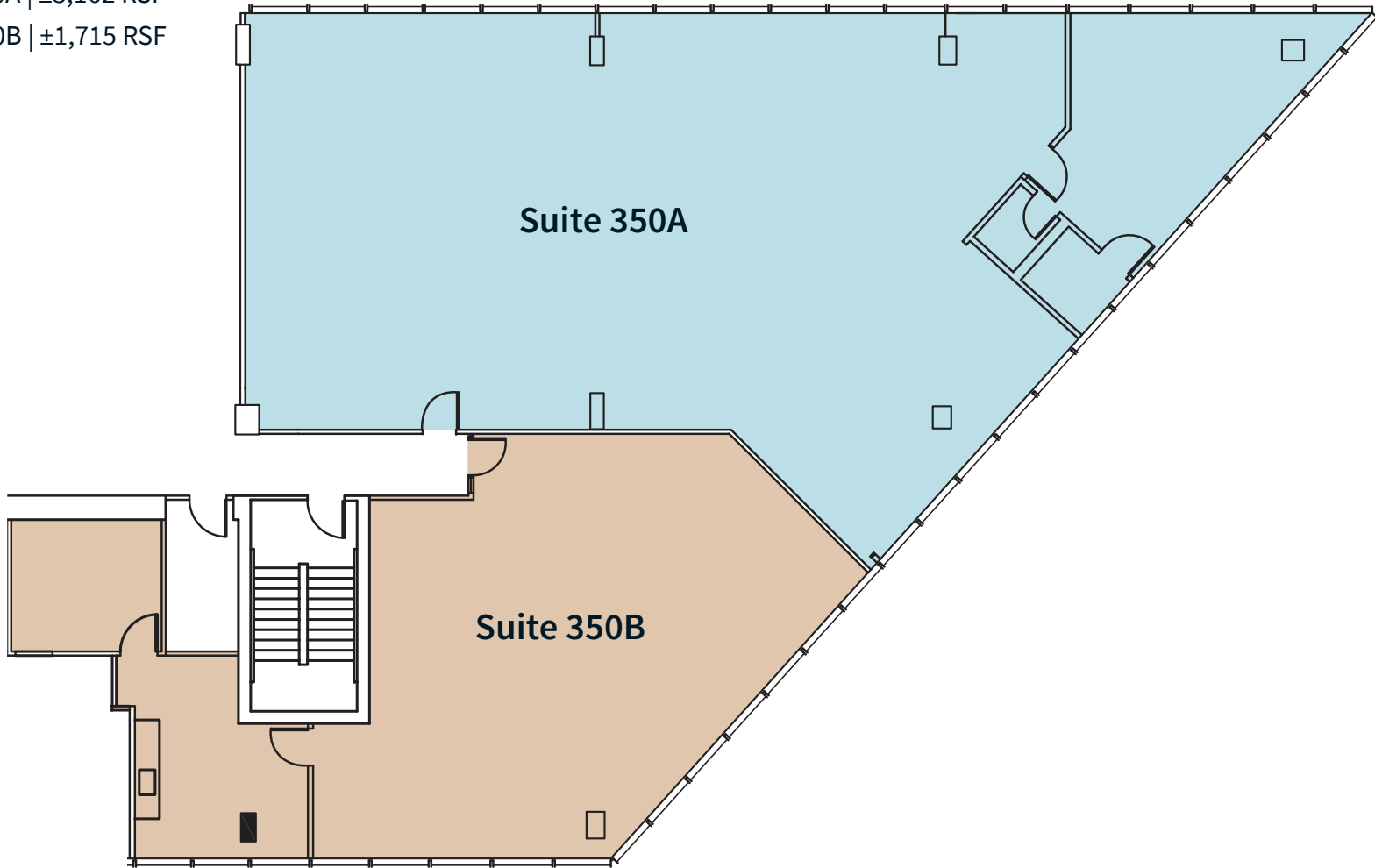
Available

Available now

Suite 350 | ±4,882 RSF

**Can be divided per plan below*

- Suite 350A | ±3,162 RSF
- Suite 350B | ±1,715 RSF

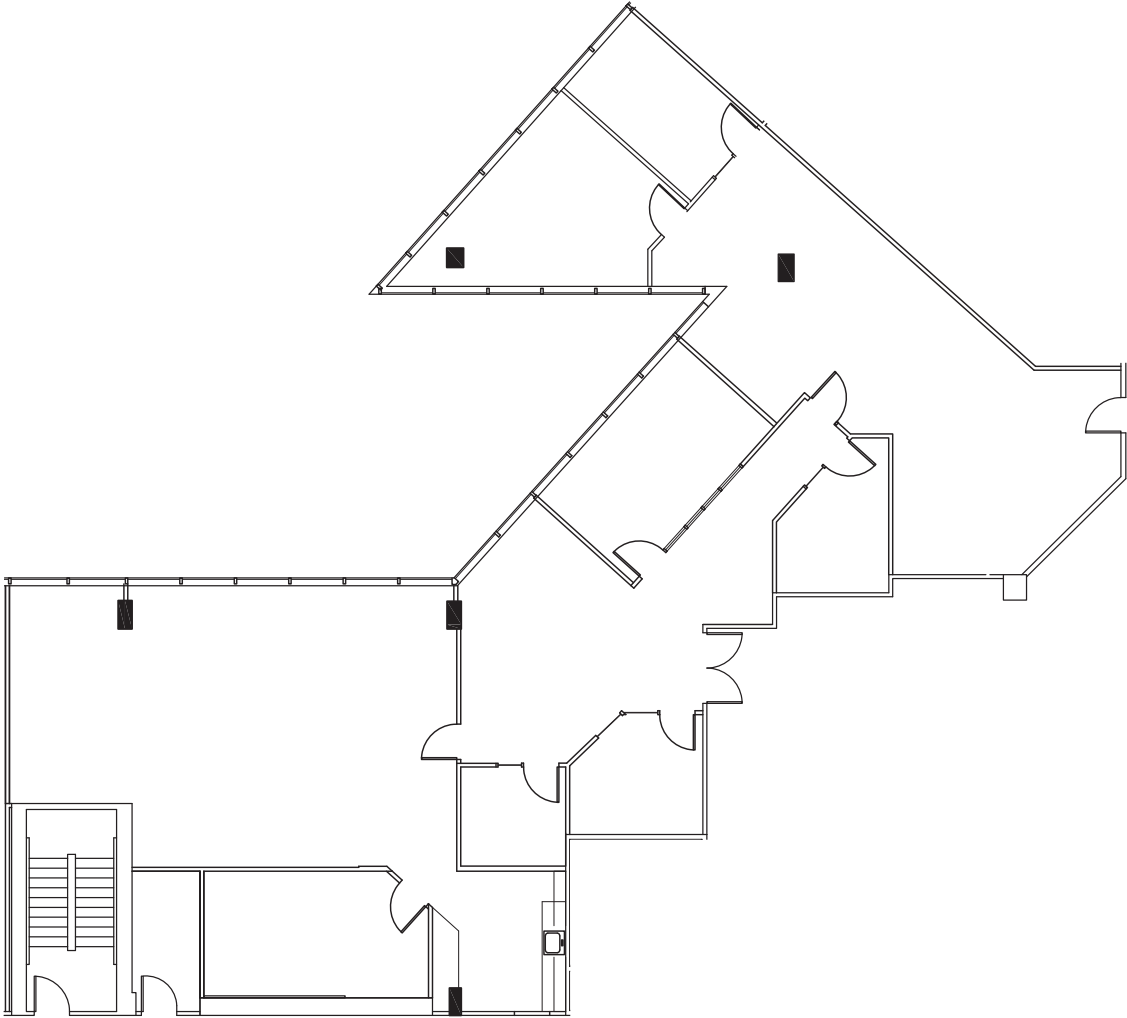


Available

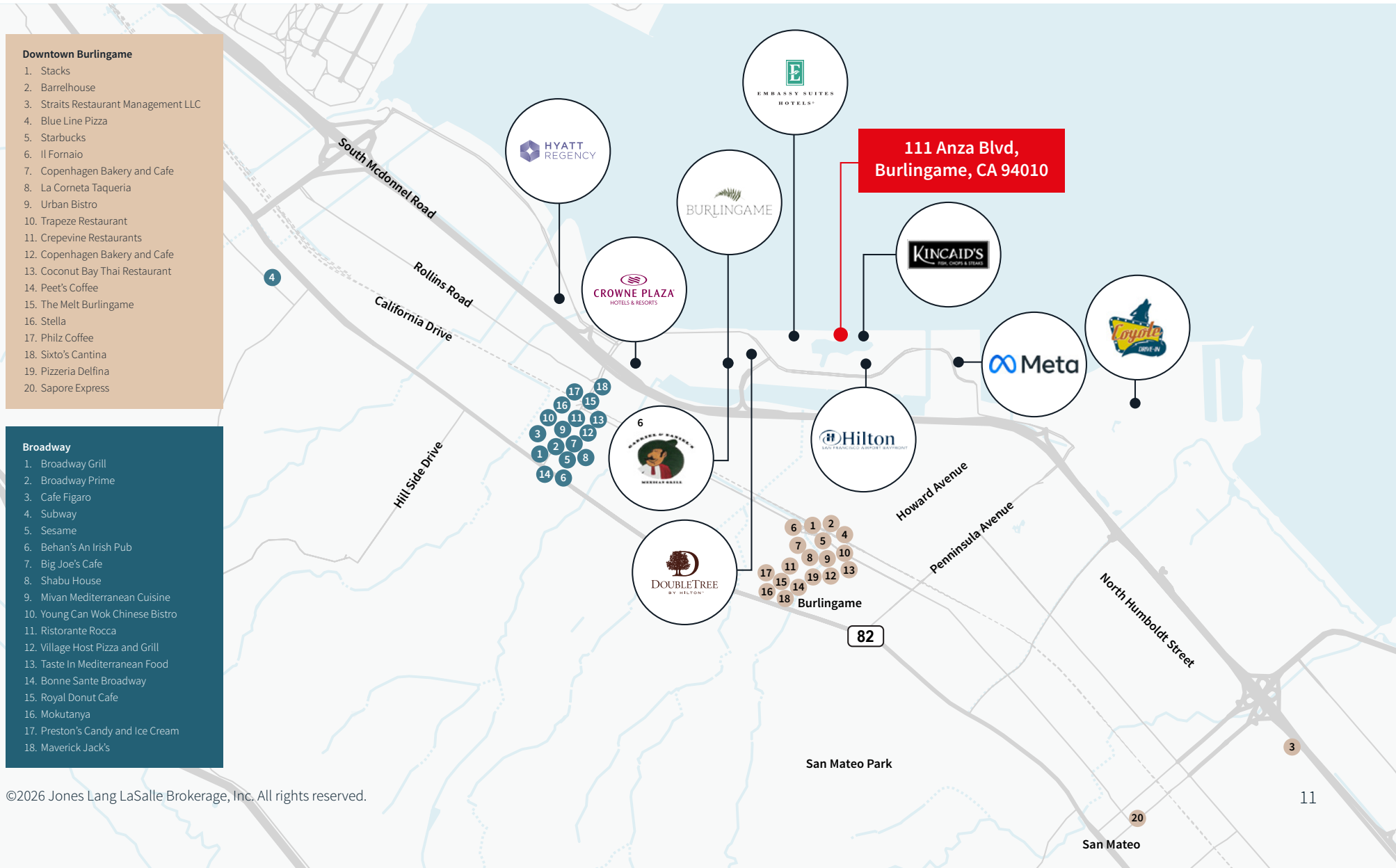
Suite 411 | ±3,451 RSF

Available now

*Can be combined with Suite 406 ±5,195 RSF



Location



JLL**Clarke Funkhouser***Senior Managing Director*

+1 650 619 5579

clarke.funkhouser@jll.com

LIC #01252763

Chris Blom*Executive Vice President*

+1 650 480 2057

chris.blom@jll.com

CA Lic. #02031205