



1610 MCKEE ROAD | SAN JOSE, CA.

PROPERTY HIGHLIGHTS:

- Corner Retail Location Between McKee Road & 34th Street
- End-Cap
- Extensive Glassline
- Spectacular Visibility & Accessibility
- High Traffic Count
- Busy Shopping Center
- Available Now!

AVAILABLE SUITE:

- Suite 20 - 1,140 SF

Estimated Demographics

Population: Average HH Income:	1 Mile	3-Mile	5-Mile
POPULATION:	38,678	260,950	564,451
AVERAGE HH INCOME:	\$102,875	\$126,583	\$139,689



For More Information, Please Contact Exclusive Agents:

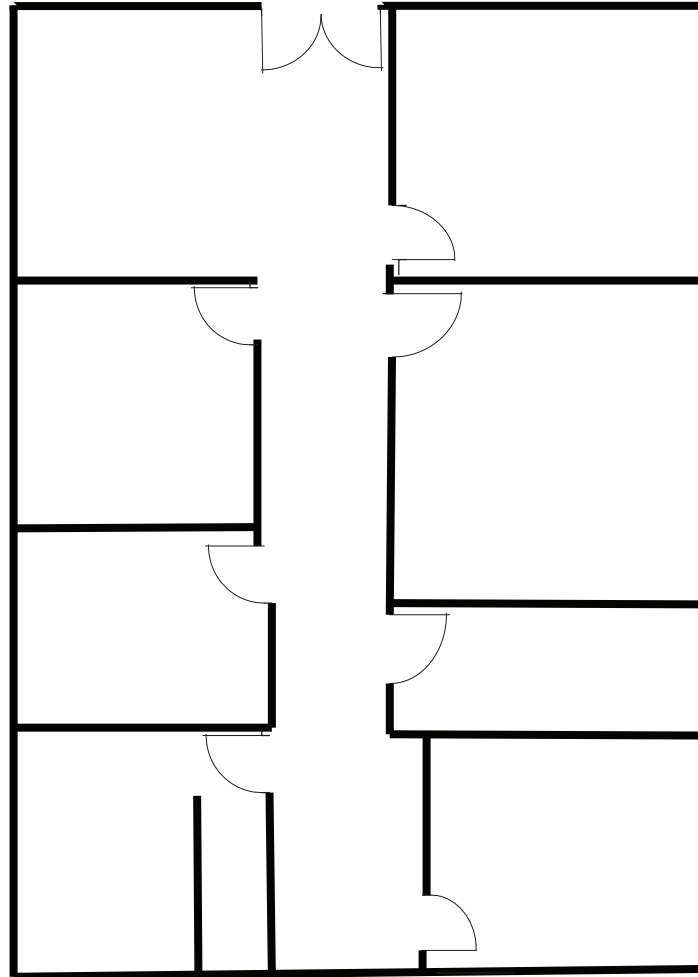
JANA GLUCKMAN jgluckman@ritchiecommercial.com
DRE Lic. #00693034 1.408.529.7988

FRANK ANDRE fandre@ritchiecommercial.com
DRE Lic. #01973849 1.408.282.8519



34 W. SANTA CLARA STREET, SAN JOSE, CA 95113
DRE # 01209214 | www.ritchiecommercial.com
1 408.971.2700 f 1 408.971.1600

Suite 20 - 1,140 SF



1610 MCKEE ROAD

For More Information, Please Contact Exclusive Agents:

JANA GLUCKMAN jgluckman@ritchiecommercial.com
DRE Lic. #00693034 1.408.529.7988

FRANK ANDRE fandre@ritchiecommercial.com
DRE Lic. #01973849 1.408.282.8519



34 W. SANTA CLARA STREET, SAN JOSE, CA 95113
DRE # 01209214 | www.ritchiecommercial.com
1 408.971.2700 f 1 408.971.1600

San Francisco | San Jose | Santa Cruz | Walnut Creek