

BINFORD COMMONS - 6314 RUCKER RD SUITE H

6314 Rucker Rd., Indianapolis, IN 46220

FOR SALE



PROPERTY HIGHLIGHTS

- Office condo for sale
- Located just off Binford Blvd., close to 62nd St. & less than a mile to I-465
- Great layout
- Close to retail, restaurants, residential, various businesses, & interstates

OFFERING SUMMARY

Sale Price:	\$250,000
Number of Units:	7
Office Condo SF::	2,920 SF
Building Size:	15,000 SF

TOM FERGUSON

O: 317.454.7171 | C: 317.714.7171
tferguson@premiercres.com

PETE ALVEAL

O: 317.454.7171 | C: 317.997.9362
palveal@premiercres.com

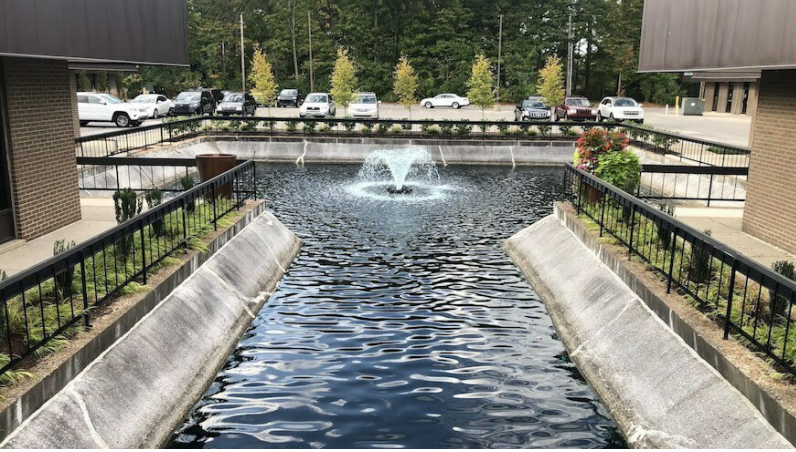
KRISTEN BERRY

O: 317.454.7171 | C: 317.660.1289
kberry@premiercres.com

BINFORD COMMONS - 6314 RUCKER RD SUITE H

6314 Rucker Rd., Indianapolis, IN 46220

FOR SALE



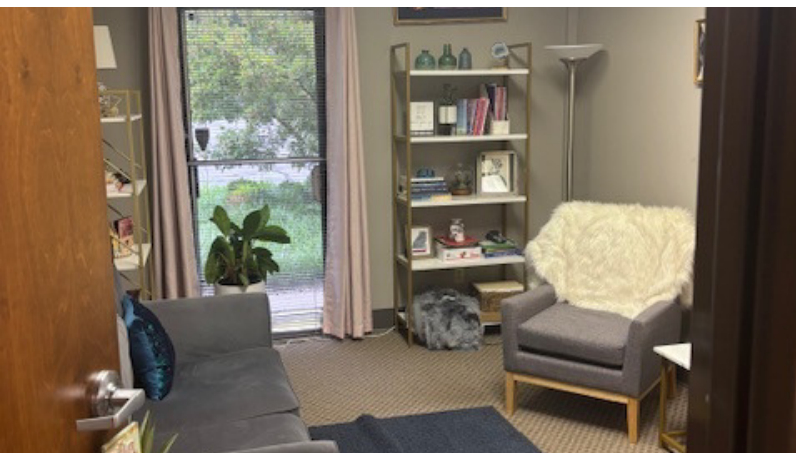
PROPERTY DESCRIPTION

Office condo for sale in a prime, central location. Surrounded by various types of amenities. Consists of eight private offices of various sizes, a large conference room, two large reception areas, a workshop, private restrooms, & some storage.



LOCATION DESCRIPTION

Office building located just off of Binford Blvd., between 62nd & 71st streets. Fantastic location on the northeast side of Indianapolis. Close to major thoroughfares & I-465. Surrounded by retail, restaurants, residential, offices, & a thriving business community.



TOM FERGUSON

O: 317.454.7171 | C: 317.714.7171
tferguson@premiercres.com

PETE ALVEAL

O: 317.454.7171 | C: 317.997.9362
palveal@premiercres.com

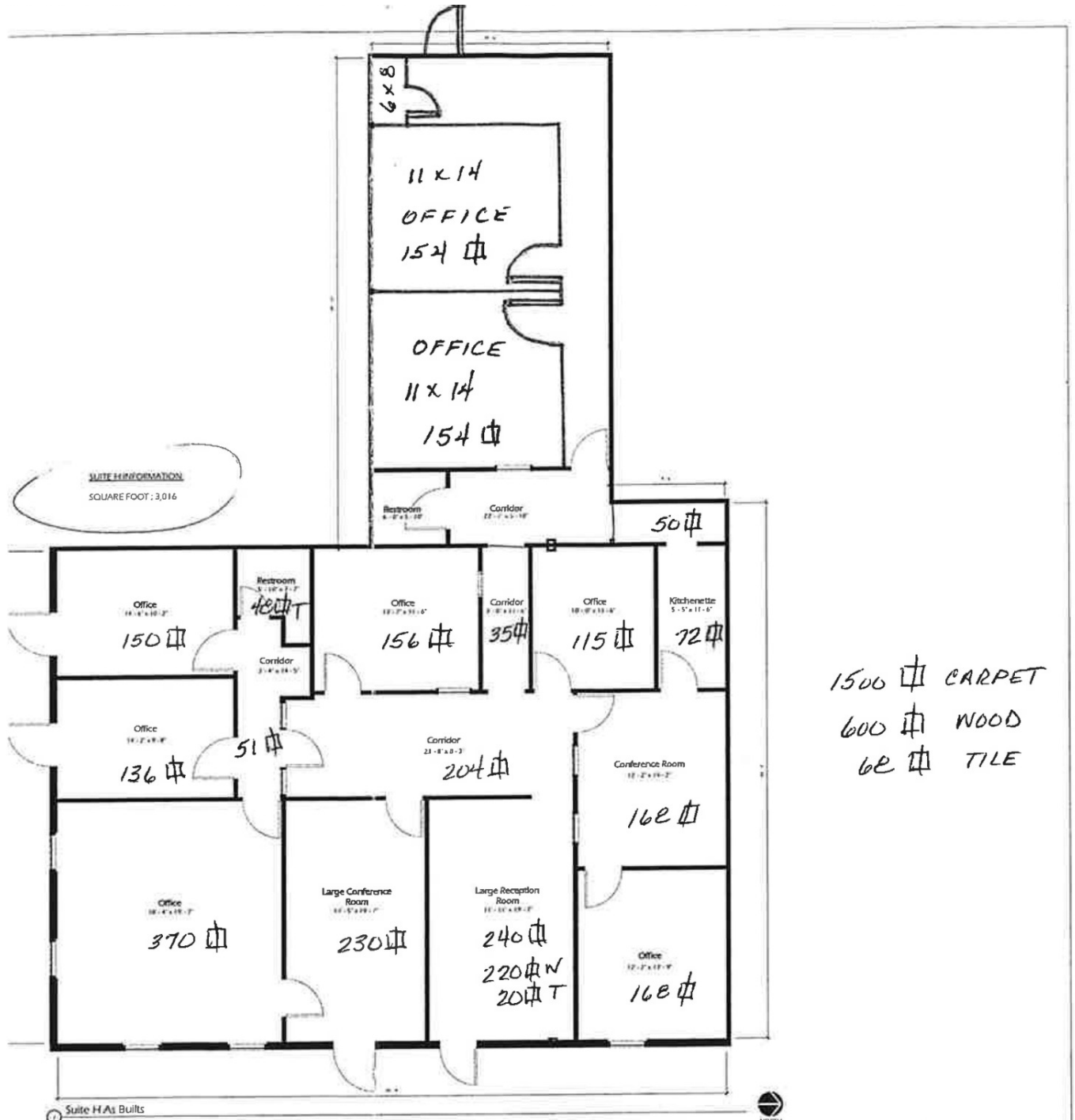
KRISTEN BERRY

O: 317.454.7171 | C: 317.660.1289
kberry@premiercres.com

BINFORD COMMONS - 6314 RUCKER RD SUITE H

FOR SALE

6314 Rucker Rd., Indianapolis, IN 46220



<p>TOM FERGUSON O: 317.454.7171 C: 317.714.7171 tferguson@premiercres.com</p>	<p>PETE ALVEAL O: 317.454.7171 C: 317.997.9362 palveal@premiercres.com</p>	<p>KRISTEN BERRY O: 317.454.7171 C: 317.660.1289 kberry@premiercres.com</p>
<p>Premier Commercial Real Estate Services TCN Worldwide • 9785 Crosspoint Blvd., Ste. 118, Indianapolis, IN 46256 • 317.454.7171 • premiercres.com</p>		